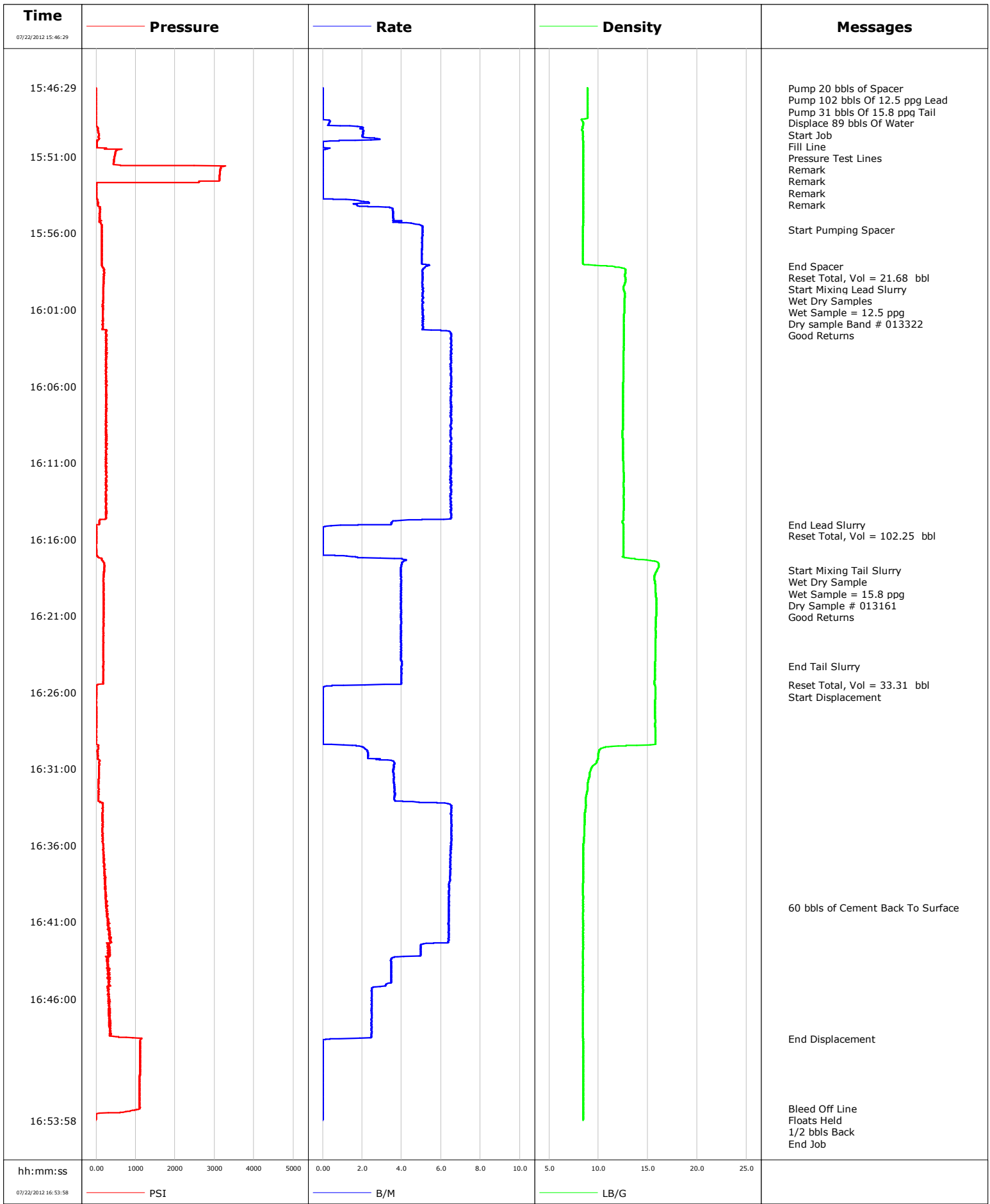


Well	MCU FEE 16-5C	Client	Enacana
Field	Mamm Creek	SIR No.	C459-00071
Engineer	Rogers / Fairbrook	Job Type	9 5/8 Surface
Country	United States	Job Date	07-22-2012

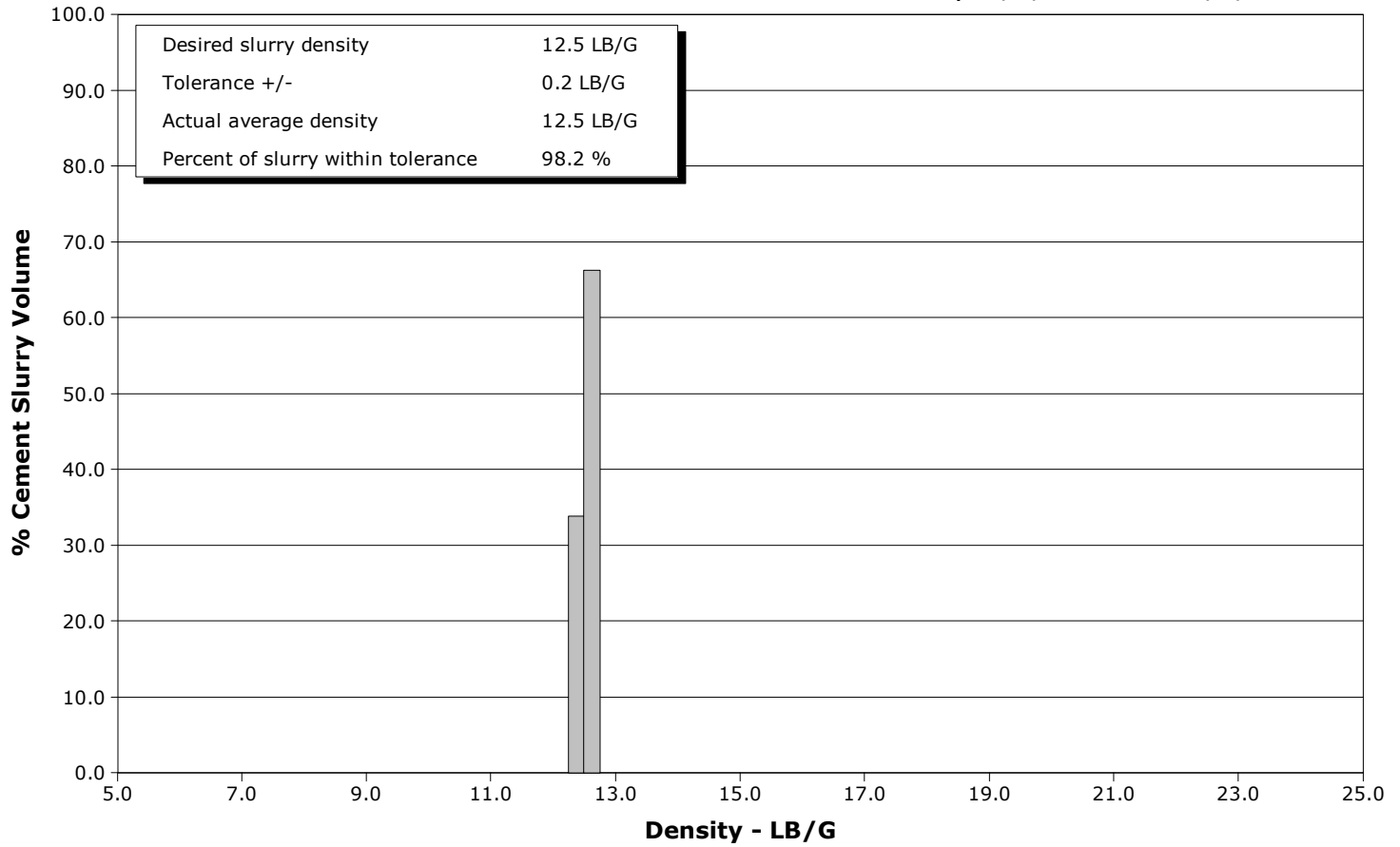


Schlumberger Cementing Qa/Qc Density Report

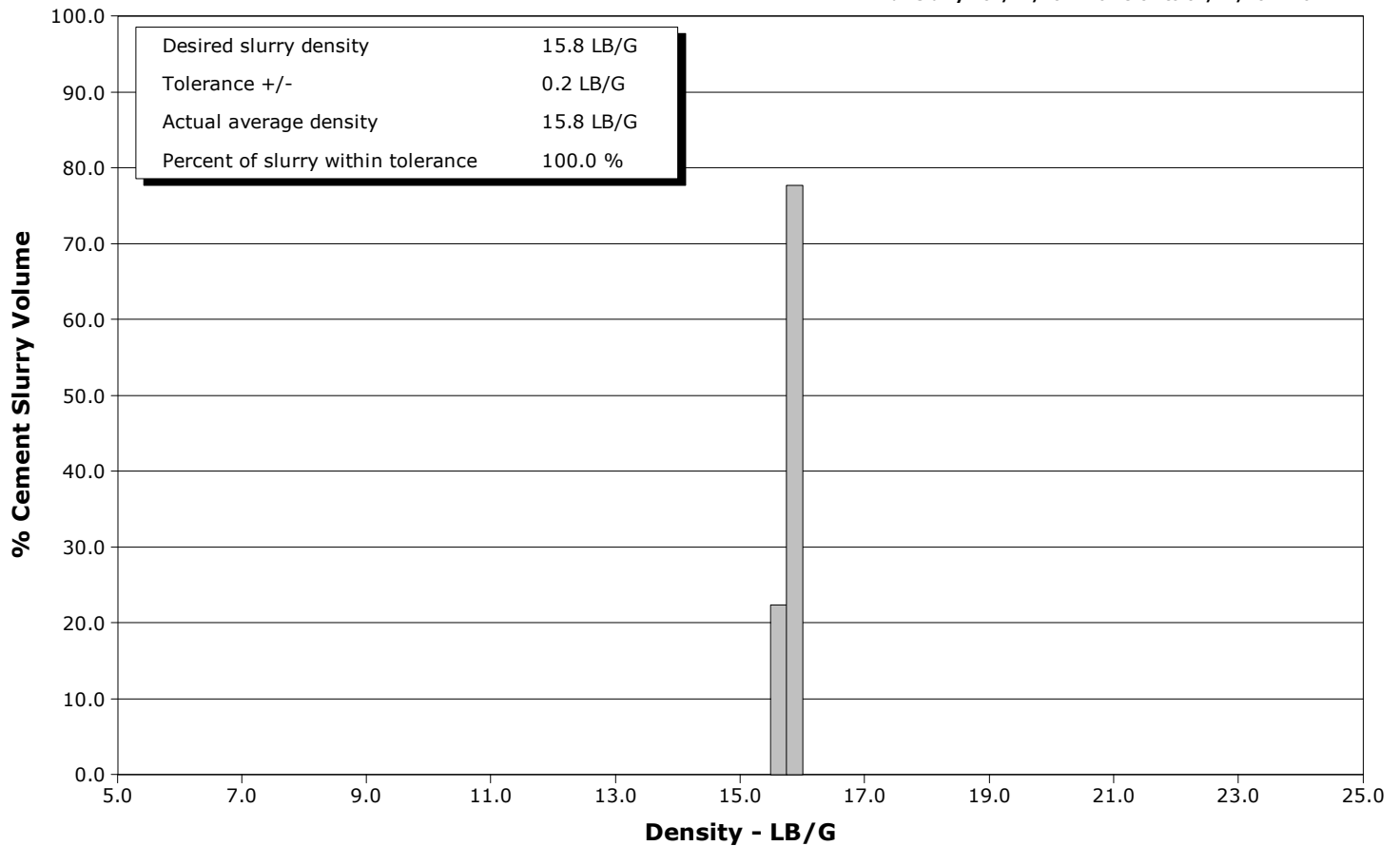
Well MCU FEE 16-5C
Field Mamm Creek
Engineer Rogers / Fairbrook
Country United States

Client Enacana
SIR No. C459-00071
Job Type 9 5/8 Surface
Job Date 07-22-2012

Lead Slurry - 07/22/2012 15:58:48 to 07/22/2012 16:15:02



Tail Slurry - 07/22/2012 16:18:02 to 07/22/2012 16:24:17





Cementing Service Report

Customer Enacana	Job Number C459-00071
----------------------------	---------------------------------

Well MCU FEE 16-5C MCU FEE 16-5C	Location (legal) M16W	Schlumberger Location	Job Start Jul/22/2012
--	---------------------------------	------------------------------	---------------------------------

Field Mamm Creek	Formation Name/Type Dirty-Sandstone	Deviation	Bit Size	Well MD	Well TVD
----------------------------	---	------------------	-----------------	----------------	-----------------

County Garfield	State/Province Colorado	BHP	BHST 95 degF	BHCT 82 degF	Pore Press. Gradient
---------------------------	-----------------------------------	------------	------------------------	------------------------	-----------------------------

Well Master 0631279570	API/UWI 1115230	Casing/Liner			
----------------------------------	---------------------------	---------------------	--	--	--

Rig Name Gas	Drilled For Gas	Service Via Land	Depth, ft 1200.0	Size, in 9.630	Weight, lb/ft 36.0	Grade N80	Thread BUSC
------------------------	---------------------------	----------------------------	----------------------------	--------------------------	------------------------------	---------------------	-----------------------

Offshore Zone	Well Class New	Well Type Development	Depth, ft 0.0	Size, in 0.000	Weight, lb/ft 0.0	Grade	Thread
----------------------	--------------------------	---------------------------------	-------------------------	--------------------------	-----------------------------	--------------	---------------

Drilling Fluid Type	Max. Density	Plastic Viscosity	Tubing/Drill Pipe				
----------------------------	---------------------	--------------------------	--------------------------	--	--	--	--

Service Line Cementing	Job Type 9 5/8 Surface	Perforations/Open Hole				
----------------------------------	----------------------------------	-------------------------------	--	--	--	--

Max. Allowed Tub. Press	Max. Allowed Ann. Press	WH Connection	Top,	Bottom,	No. of Shots	Total Interval
--------------------------------	--------------------------------	----------------------	-------------	----------------	---------------------	-----------------------

Service Instructions						
-----------------------------	--	--	--	--	--	--

Treat Down	Displacement	Packer Type	Packer Depth
-------------------	---------------------	--------------------	---------------------

Tubing Vol.	Casing Vol.	Annular Vol.	Openhole Vol.
--------------------	--------------------	---------------------	----------------------

Casing/Tubing Secured <input type="checkbox"/>	1 Hole Vol. Circulated prior to Cement <input type="checkbox"/>	Casing Tools	Squeeze Job
---	--	---------------------	--------------------

Lift Pressure	Shoe Type Float	Squeeze Type
----------------------	---------------------------	---------------------

Pipe Rotated <input type="checkbox"/>	Pipe Reciprocated <input type="checkbox"/>	Shoe Depth 1200.0 ft	Tool Type
--	---	--------------------------------	------------------

No. Centralizers	Top Plugs 1	Bottom Plugs	Stage Tool Type	Tool Depth
-------------------------	-----------------------	---------------------	------------------------	-------------------

Cement Head Type Single	Stage Tool Depth	Tail Pipe Size
-----------------------------------	-------------------------	-----------------------

Job Scheduled For Jul/22/2012	Arrived on Location Jul/22/2012	Leave Location Jul/22/2012	Collar Type Float	Tail Pipe Depth
---	---	--------------------------------------	-----------------------------	------------------------

			Collar Depth 1154.0 ft	Sqz. Total Vol.
--	--	--	----------------------------------	------------------------

Date	Time 24-hr clock	Treating Pressure PSI	Flow Rate B/M	Density LB/G	Volume BBL	Message
07/22/2012	15:15:00					Started Acquisition
07/22/2012	15:46:29	-3	0.0	8.88	2.3	
07/22/2012	15:46:32					Pump 20 bbls of Spacer
07/22/2012	15:46:32					Pump 102 bbls Of 12.5 ppg Lead
07/22/2012	15:46:32					Pump 31 bbls Of 15.8 ppg Tail
07/22/2012	15:46:32					Displace 89 bbls Of Water
07/22/2012	15:46:32	-3	0.0	8.88	2.3	
07/22/2012	15:46:33					Start Job
07/22/2012	15:46:33	-3	0.0	8.88	2.3	
07/22/2012	15:46:35					Fill Line
07/22/2012	15:46:35	-3	0.0	8.88	2.3	
07/22/2012	15:46:47					Pressure Test Lines
07/22/2012	15:46:47	-3	0.0	8.88	2.3	
07/22/2012	15:46:49					Remark
07/22/2012	15:46:49					Remark
07/22/2012	15:46:49					Remark
07/22/2012	15:46:49	-3	0.0	8.88	2.3	
07/22/2012	15:46:50					Remark
07/22/2012	15:46:50	-3	0.0	8.89	2.3	
07/22/2012	15:50:00	21	0.2	8.43	2.2	
07/22/2012	15:55:00	91	3.6	8.43	5.6	

Well			Field		Job Start	Customer		Job Number
MCU FEE 16-5C MCU FEE 16-5C			Mamm Creek		Jul/22/2012	Enacana		C459-00071
Date	Time 24-hr clock	Treating Pressure PSI	Flow Rate B/M	Density LB/G	Volume BBL	Message		
07/22/2012	15:55:45	138	5.1	8.43	8.9			
07/22/2012	15:58:09					End Spacer		
07/22/2012	15:58:09	143	5.3	10.84	21.0			
07/22/2012	15:58:16					Reset Total, Vol = 21.68 bbl		
07/22/2012	15:58:16	185	5.2	12.31	21.6			
07/22/2012	15:58:48					Start Mixing Lead Slurry		
07/22/2012	15:58:48	199	5.1	12.68	24.3			
07/22/2012	15:58:52					Wet Dry Samples		
07/22/2012	15:58:52	193	5.1	12.70	24.6			
07/22/2012	15:58:53					Wet Sample = 12.5 ppg		
07/22/2012	15:58:53	193	5.1	12.70	24.7			
07/22/2012	15:58:54					Dry sample Band # 013322		
07/22/2012	15:58:54	191	5.1	12.71	24.8			
07/22/2012	15:59:49					Good Returns		
07/22/2012	15:59:49	177	5.1	12.62	29.4			
07/22/2012	16:00:00	181	5.1	12.67	30.4			
07/22/2012	16:05:00	253	6.5	12.50	59.5			
07/22/2012	16:10:00	246	6.5	12.46	91.9			
07/22/2012	16:15:00	80	3.5	12.50	123.7			
07/22/2012	16:15:02					End Lead Slurry		
07/22/2012	16:15:02	78	3.5	12.50	123.8			
07/22/2012	16:15:04					Reset Total, Vol = 102.25 bbl		
07/22/2012	16:15:04	-7	1.8	12.52	123.9			
07/22/2012	16:18:02					Start Mixing Tail Slurry		
07/22/2012	16:18:02	199	4.0	15.93	127.4			
07/22/2012	16:18:08					Wet Dry Sample		
07/22/2012	16:18:08	192	4.0	15.84	127.8			
07/22/2012	16:18:09					Wet Sample = 15.8 ppg		
07/22/2012	16:18:09	200	4.0	15.84	127.9			
07/22/2012	16:18:10					Dry Sample # 013161		
07/22/2012	16:18:10	200	4.0	15.82	127.9			
07/22/2012	16:19:07					Good Returns		
07/22/2012	16:19:07	190	4.0	15.76	131.7			
07/22/2012	16:20:00	190	4.0	15.85	135.2			
07/22/2012	16:24:17					End Tail Slurry		
07/22/2012	16:24:17	176	4.0	15.73	152.2			
07/22/2012	16:25:00	176	4.0	15.71	155.1			
07/22/2012	16:25:32					Reset Total, Vol = 33.31 bbl		
07/22/2012	16:25:32	31	2.1	15.69	157.2			
07/22/2012	16:25:40					Start Displacement		
07/22/2012	16:25:40	3	0.0	15.75	157.3			
07/22/2012	16:30:00	39	2.3	9.99	158.4			
07/22/2012	16:35:00	159	6.5	8.54	181.2			
07/22/2012	16:40:00	284	6.4	8.43	213.4			
07/22/2012	16:40:05					60 bbls of Cement Back To Surface		
07/22/2012	16:40:05	251	6.4	8.43	214.0			
07/22/2012	16:45:00	315	3.5	8.43	239.1			
07/22/2012	16:48:39					End Displacement		
07/22/2012	16:48:39	1117	0.4	8.43	248.3			
07/22/2012	16:50:00	1105	0.0	8.43	248.3			
07/22/2012	16:53:11					Bleed Off Line		
07/22/2012	16:53:11	1100	0.0	8.43	248.3			
07/22/2012	16:53:12					Floats Held		
07/22/2012	16:53:12	1104	0.0	8.43	248.3			

Well MCU FEE 16-5C MCU FEE 16-5C			Field Mamm Creek		Job Start Jul/22/2012		Customer Enacana		Job Number C459-00071	
Date	Time 24-hr clock	Treating Pressure PSI	Flow Rate B/M	Density LB/G	Volume BBL	Message				
07/22/2012	16:53:41	-3	0.0	8.43	248.3					
07/22/2012	16:53:55					End Job				
07/22/2012	16:53:55	-2	0.0	8.43	248.3					

Post Job Summary

Average Pump Rates, bbl/min					Volume of Fluid Injected, bbl			
Slurry 4.9	N2	Mud 0.0	Maximum Rate 6.5	Total Slurry 248.3	Mud 0.0	Spacer 12.1	N2	
Treating Pressure Summary, psi					Breakdown Fluid			
Maximum 3270	Final -1	Average 311	Bump Plug to	Breakdown	Type	Volume	Density	
Avg. N2 Percent	Designed Slurry Volume	Displacement 91.0 bbl	Mix Water Temp	Cement Circulated to Surface? <input type="checkbox"/>	Volume			
				Washed Thru Perfs <input type="checkbox"/>	To			
Customer or Authorized Representative Marko Silva			Schlumberger Supervisor Rogers / Fairbrook		Circulation Lost <input type="checkbox"/>	Job Completed <input type="checkbox"/>		
					-	-		