

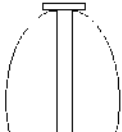
CEMENT BOND LOG
4 TRACK PRESENTATION
FINAL PRINT

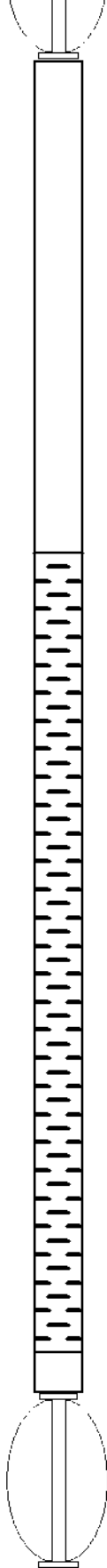
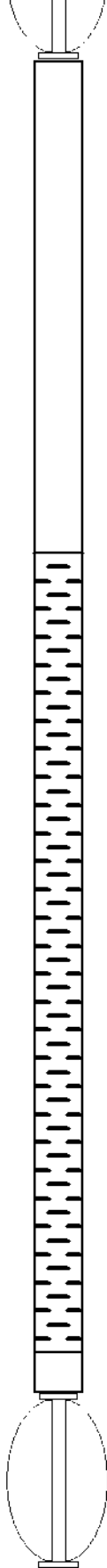
Company		AAA Well Service	
Well		BONE #1	
Field		MESAVERDE	
County		ARCHULETA	
State		COLORADO	
Location:		API # : 05-007-05004	
Well		BONE #1	
Field		MESAVERDE	
County		ARCHULETA	
State		COLORADO	
Permanent Datum		GROUND LEVEL Elevation 6712'	
Log Measured From		RKB 12'	
Drilling Measured From		RIG KELLY BUSHING	
Elevation		K.B. 6724'	
		D.F. 6723'	
		G.L. 6712'	
Date		10/9/2012	
Run Number		ONE	
Depth Driller		7550'	
Depth Logger		1209'	
Bottom Logged Interval		1209'	
Top Log Interval		SURFACE	
Open Hole Size		9 5/8"	
Type Fluid		WATER	
Density / Viscosity			
Max. Recorded Temp.			
Estimated Cement Top			
Time Well Ready		13:10	
Time Logger on Bottom		13:25	
Equipment Number		D-5 SIE DRA	
Location		FARMINGTON,NM	
Recorded By		L.DONALD	
Witnessed By		MR.R.WHITELEY	
		MR.M.WEEMS	
Run Number		Tubing Record	
Bit		To	
From		Size	
		Weight	
		From	
		To	
Casing Record		Size	
Surface String		10 3/4"	
Prot. String		7 5/8"	
Production String		5 1/2"	
Liner		5 1/2"	
Wgt/Ft		Top	
40.5#		SURF	
26.4#		SURF	
15.5#		cut off below 1218"	
Bottom		205'	
		3507'	
		7622	

>>> Fold Here >>>

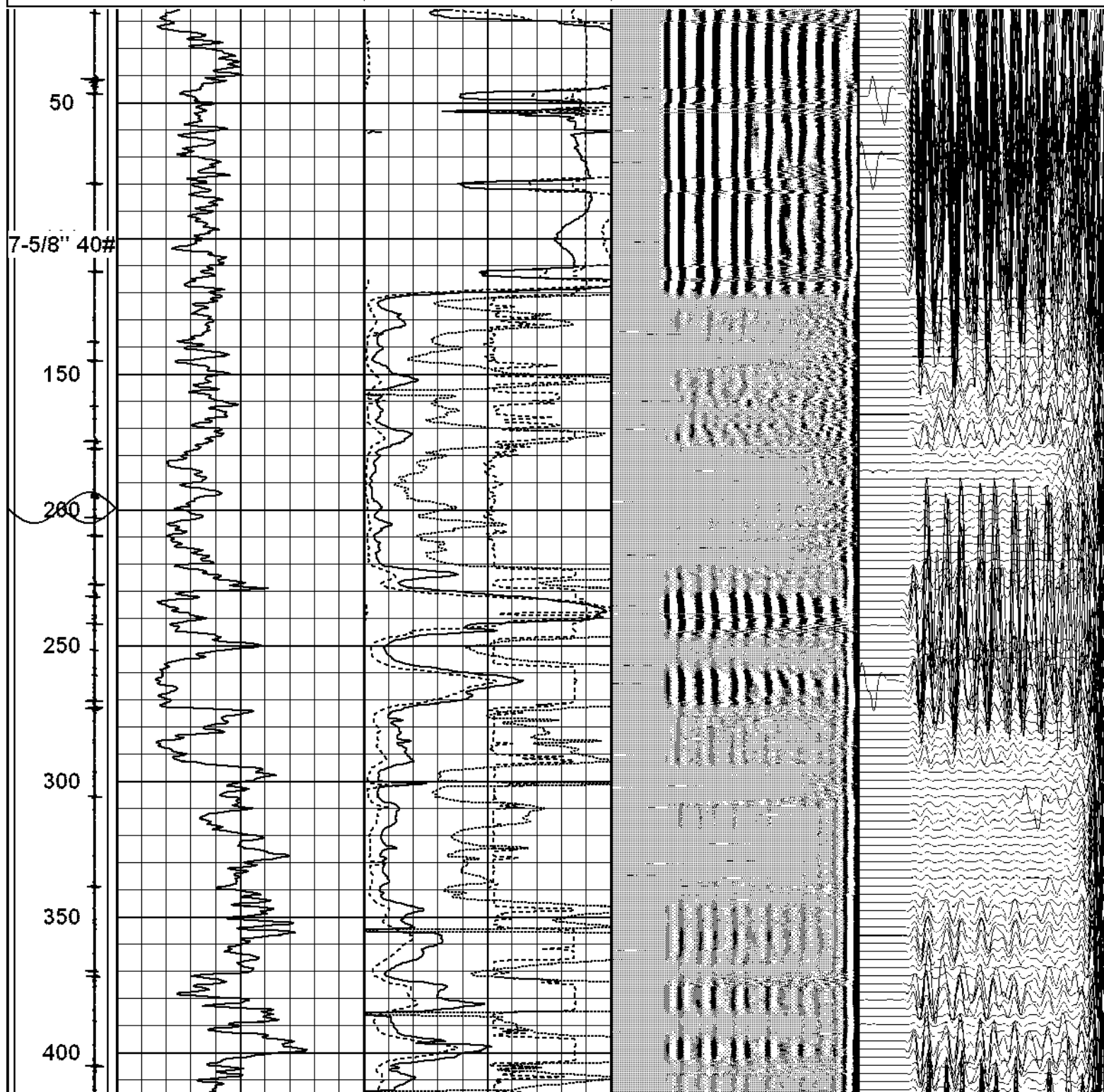
All interpretations are opinions based on inferences from electrical or other measurements and we cannot and do not guarantee the accuracy or correctness of any interpretation, and we shall not, except in the case of gross or willful negligence on our part, be liable or responsible for any loss, costs, damages, or expenses incurred or sustained by anyone resulting from any interpretation made by any of our officers, agents or employees. These interpretations are also subject to our general terms and conditions set out in our current Price Schedule.

Comments

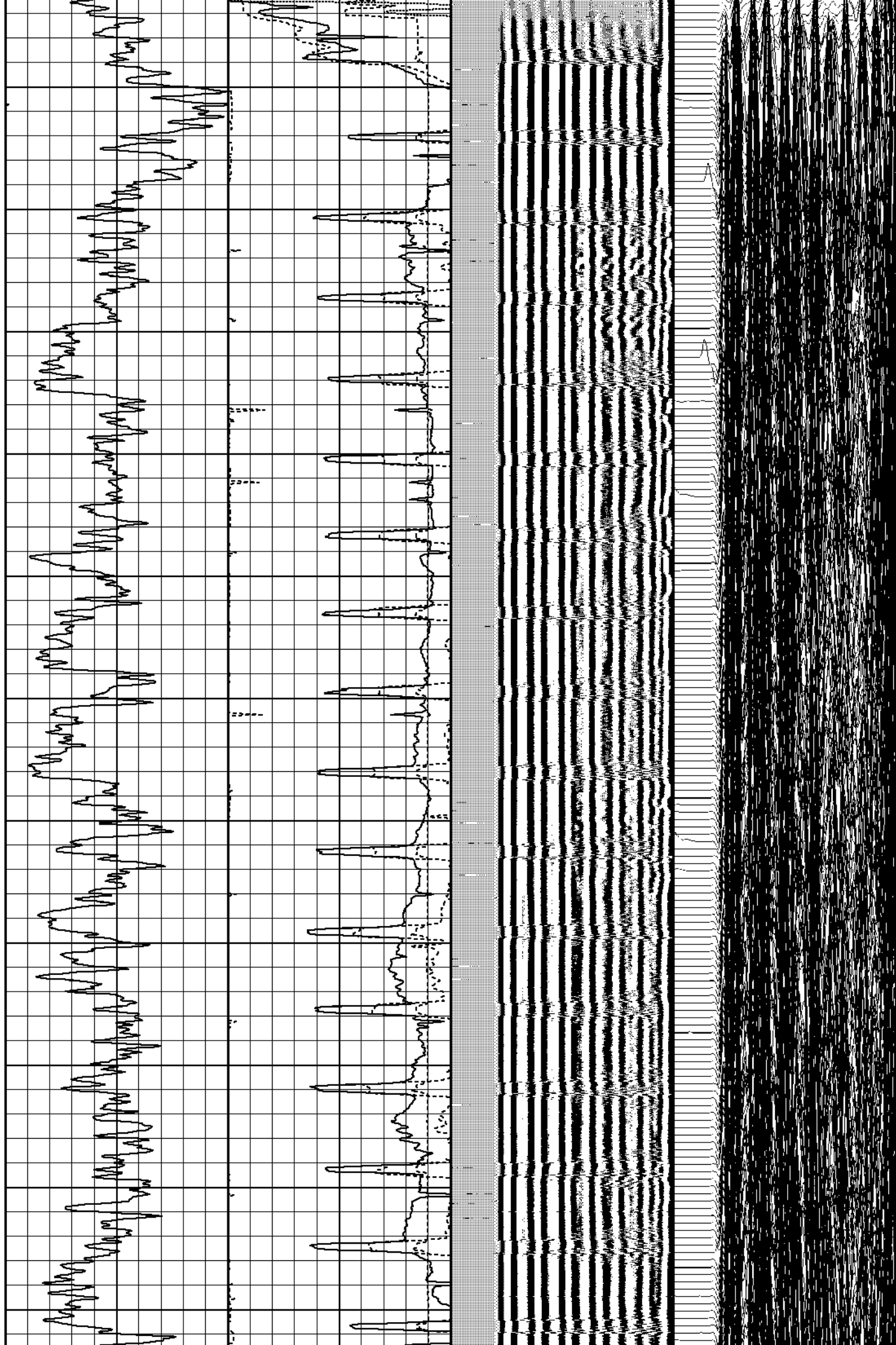
Sensor	Offset (ft)	Schematic	Description	Len (ft)	OD (in)	Wt (lb)
			SIE2 SIE Centralizer	2.20	2.25	25.00

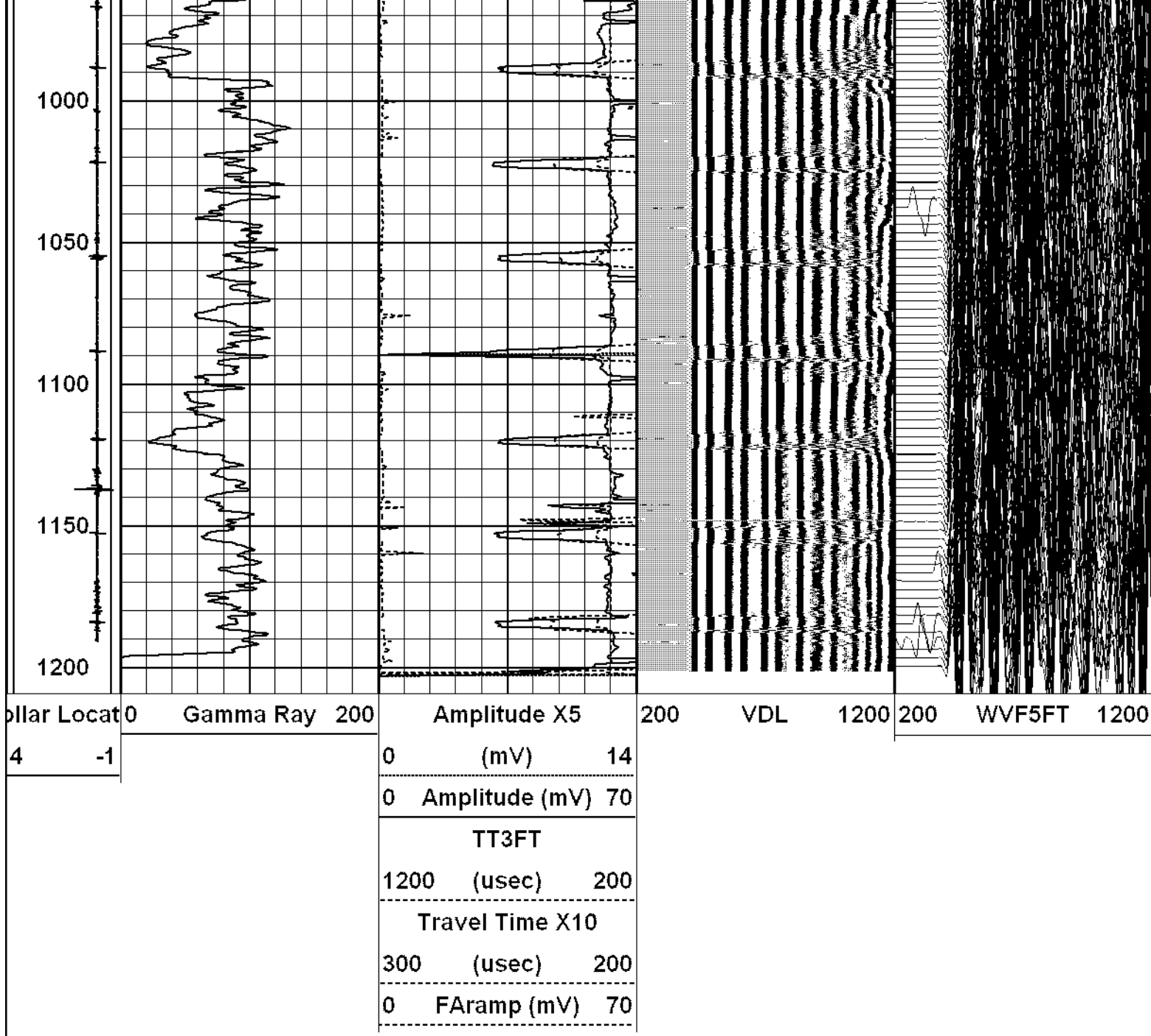
CCL	18.00					
GR	13.30					
			CBL SIE1X2-SIE (DRA) SIE 3 3/8" Dual Receiver	16.83	3.25	200.00
WVF5FT	7.41					
WVF3FT	6.41					
WVFSYNC	2.20					
			SIE2 SIE Centralizer	2.20	2.25	25.00
Dataset: aaabone1cbl.db: mesaverde/bone1/run1/pass3 Total Length: 21.23 ft Total Weight: 250.00 lb O.D. 3.25 in						

Wellbore Locat	0	Gamma Ray	200	Amplitude X5		200	VDL	1200	200	WVF5FT	1200
4	-1			0	(mV)	14					
				0	Amplitude (mV)		70				
				TT3FT							
				1200	(usec)	200					
				Travel Time X10							
				300	(usec)	200					
				0	FAramp (mV)		70				

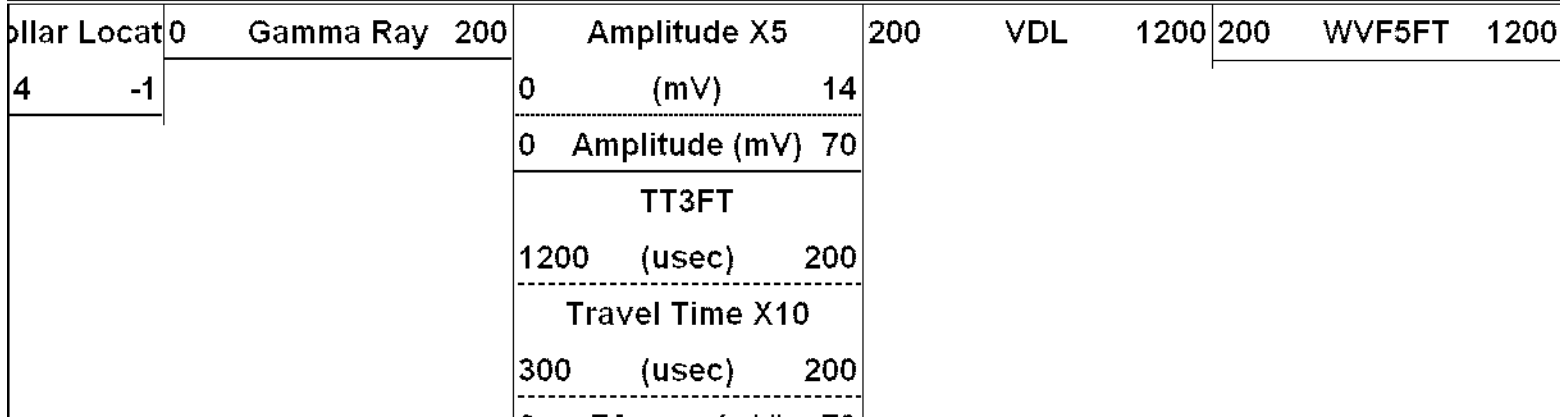


450
500
550
600
650
700
750
800
850
900
950

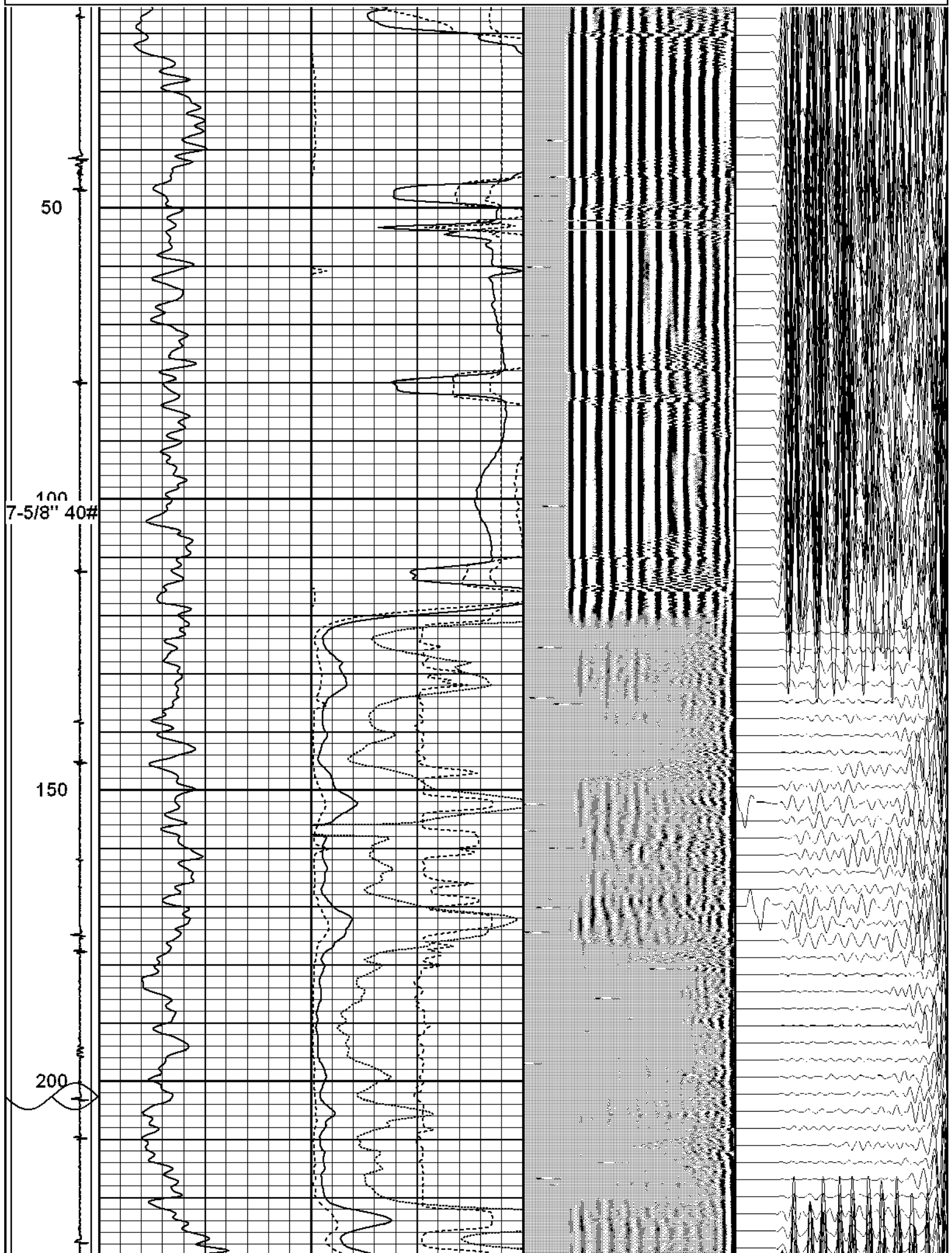




Database File: aaabone1cbl.db
 Dataset Pathname: mesaverde/bone1/run1/pass3
 Presentation Format: cbl7inplo
 Dataset Creation: Tue Oct 09 14:43:35 2012 by Log SCH 120430
 Charted by: Depth in Feet scaled 1:240



0 FAramp (mV) 70



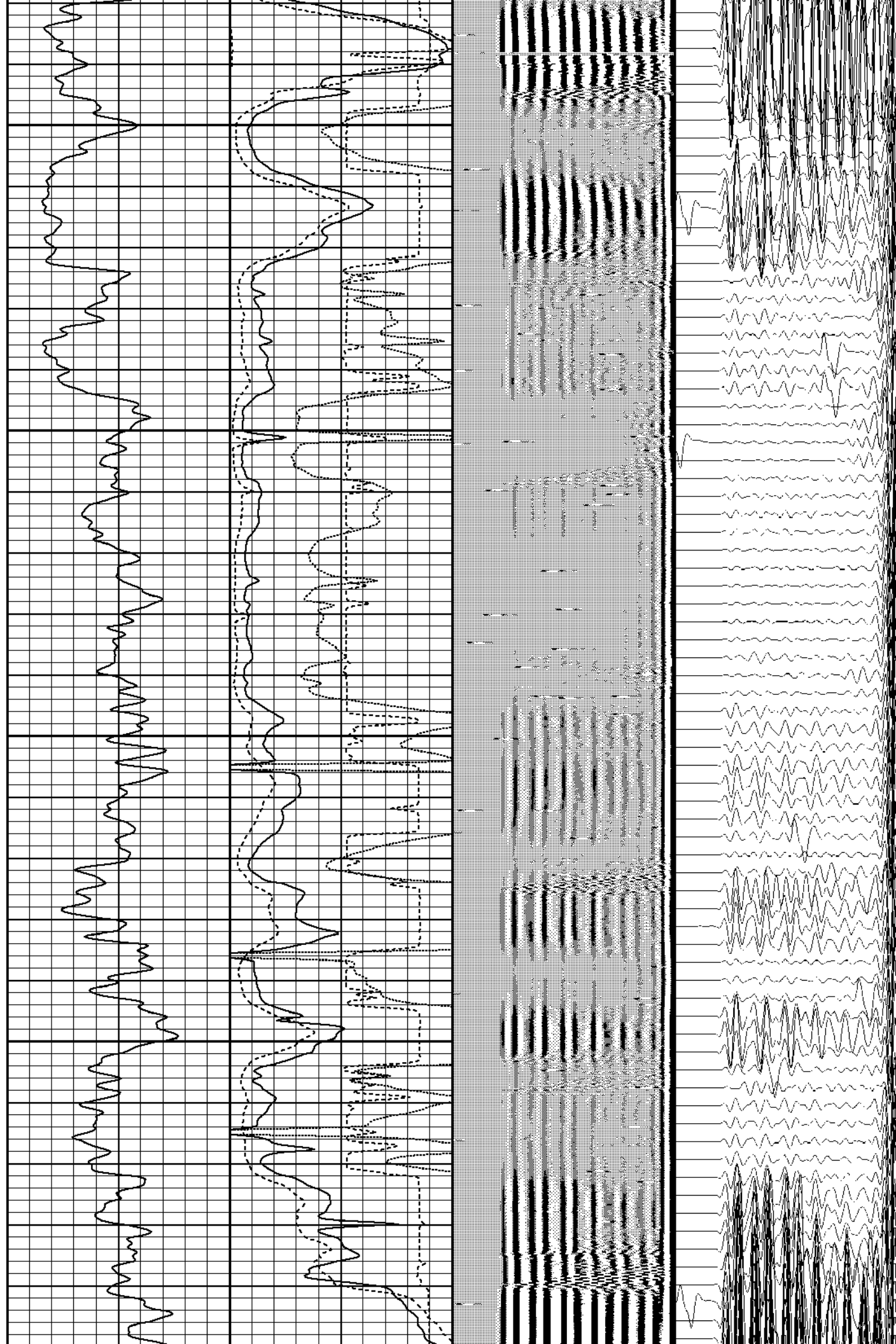
250

300

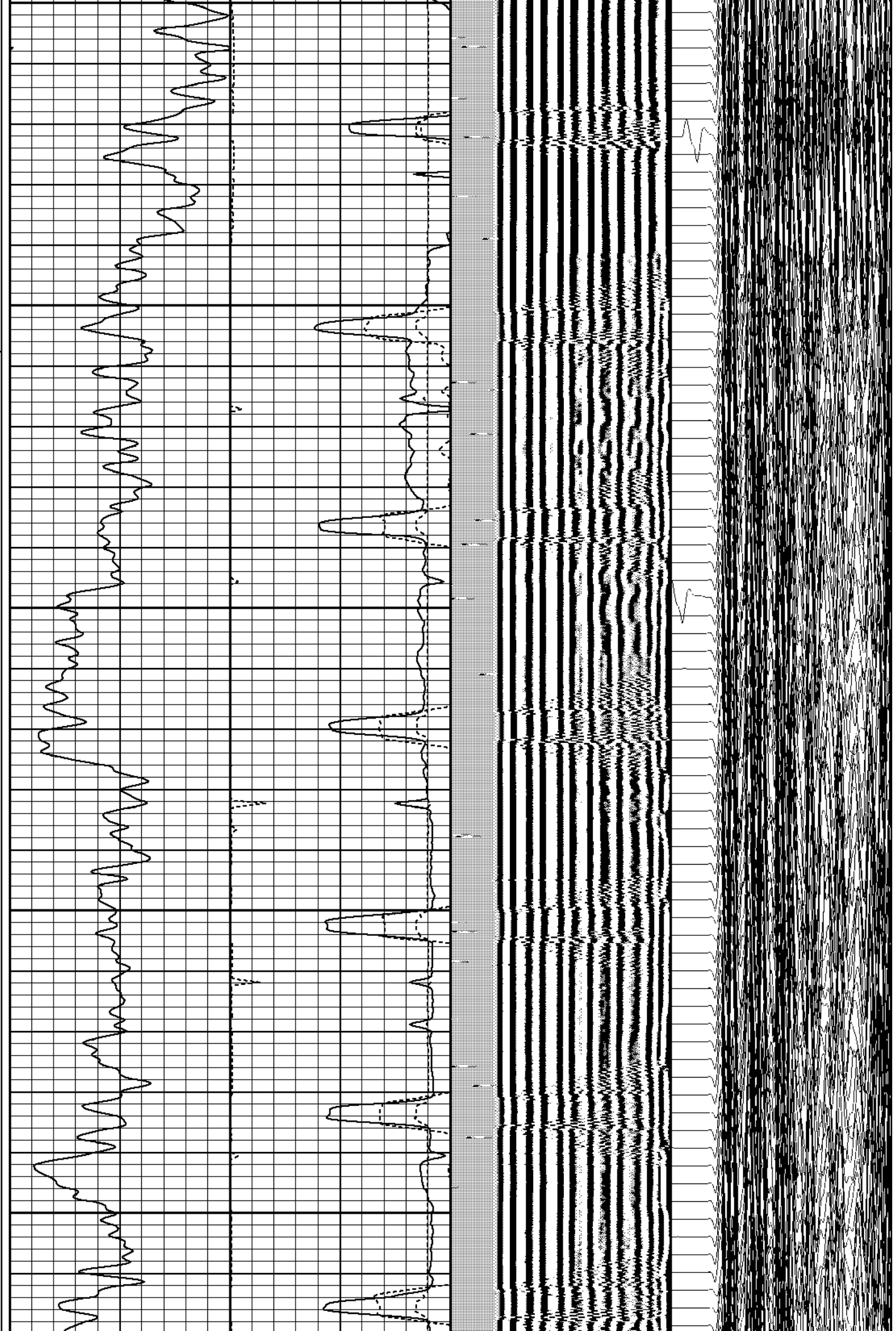
350

400

450



450
500
550
600
650

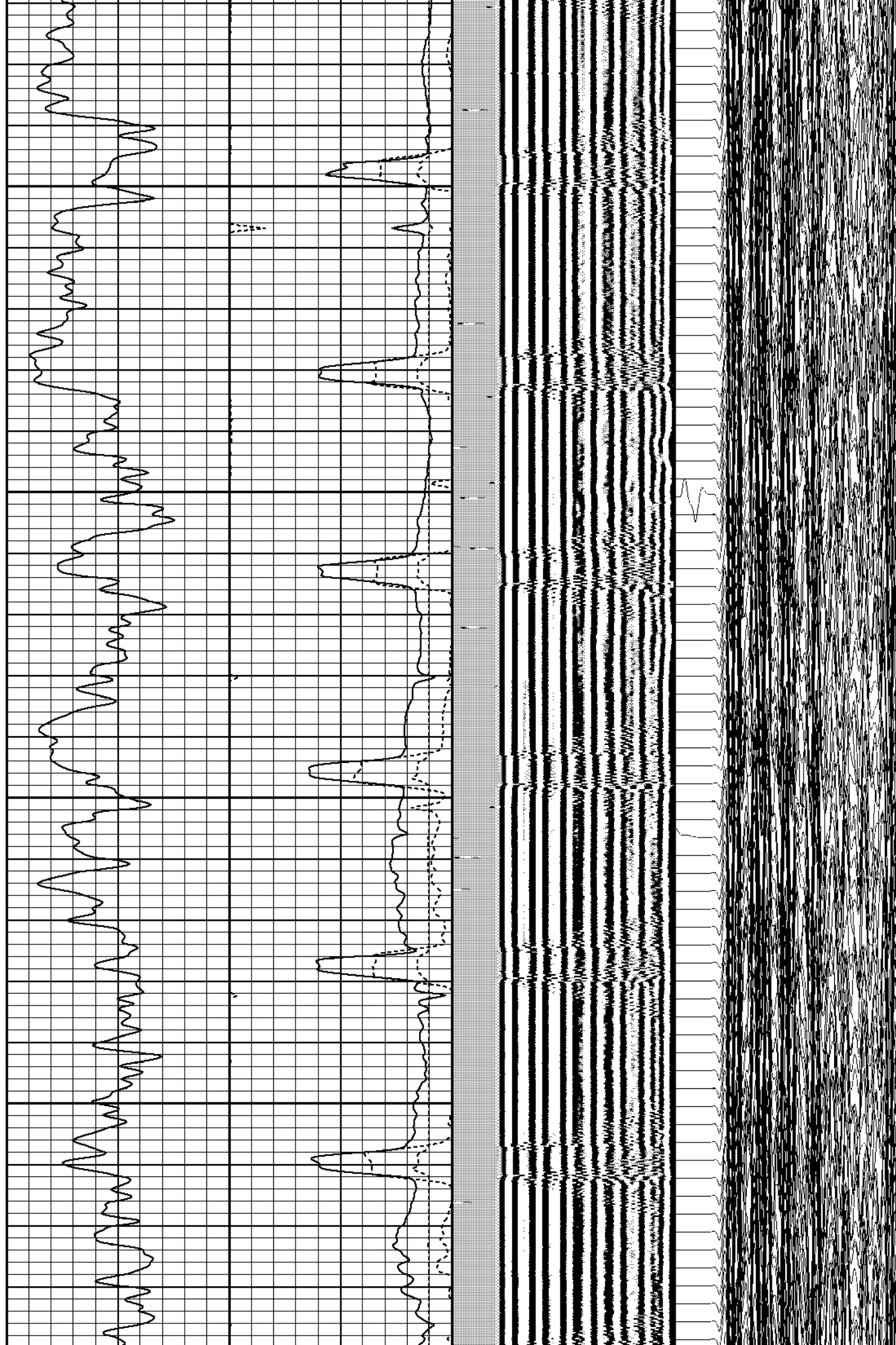


700

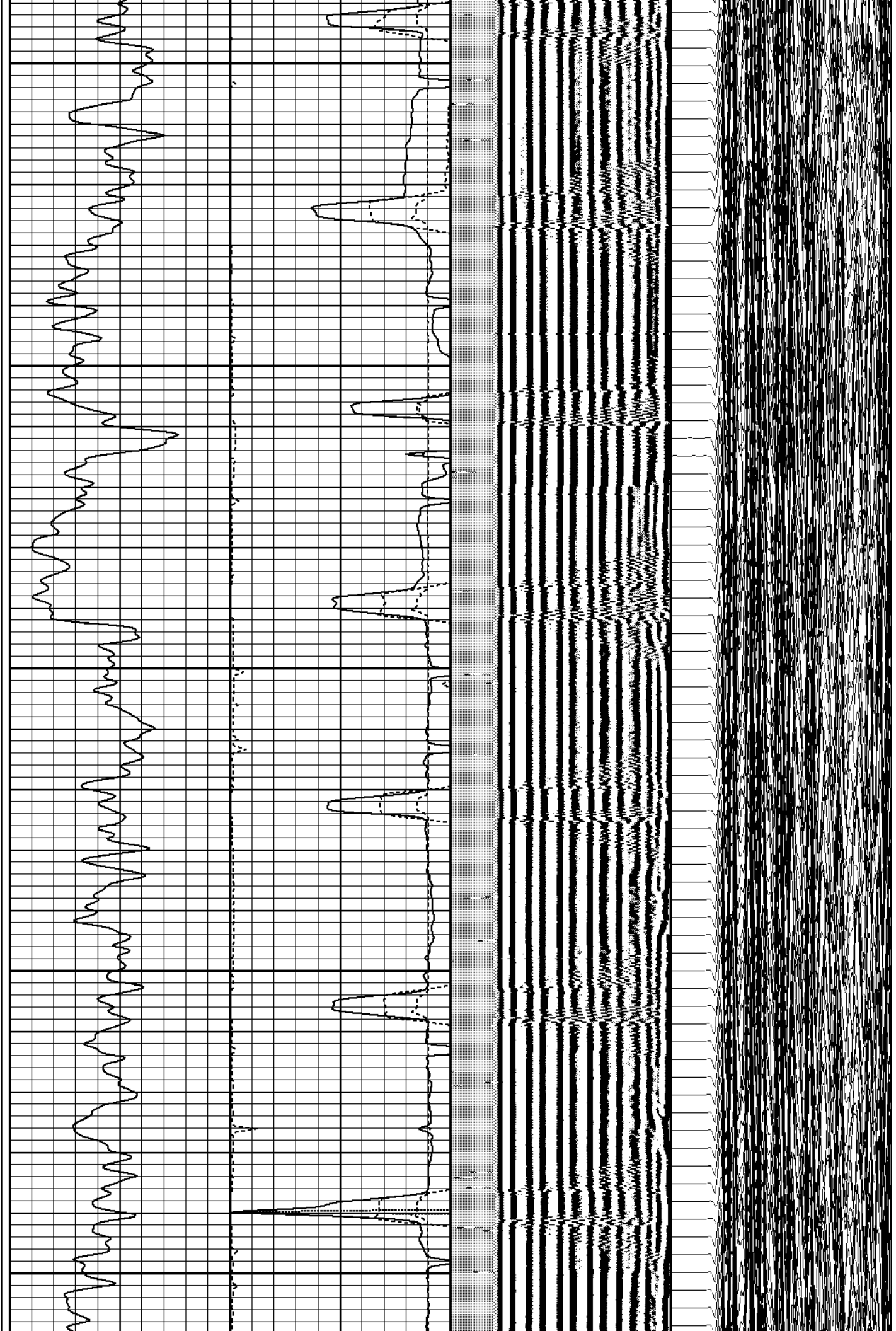
750

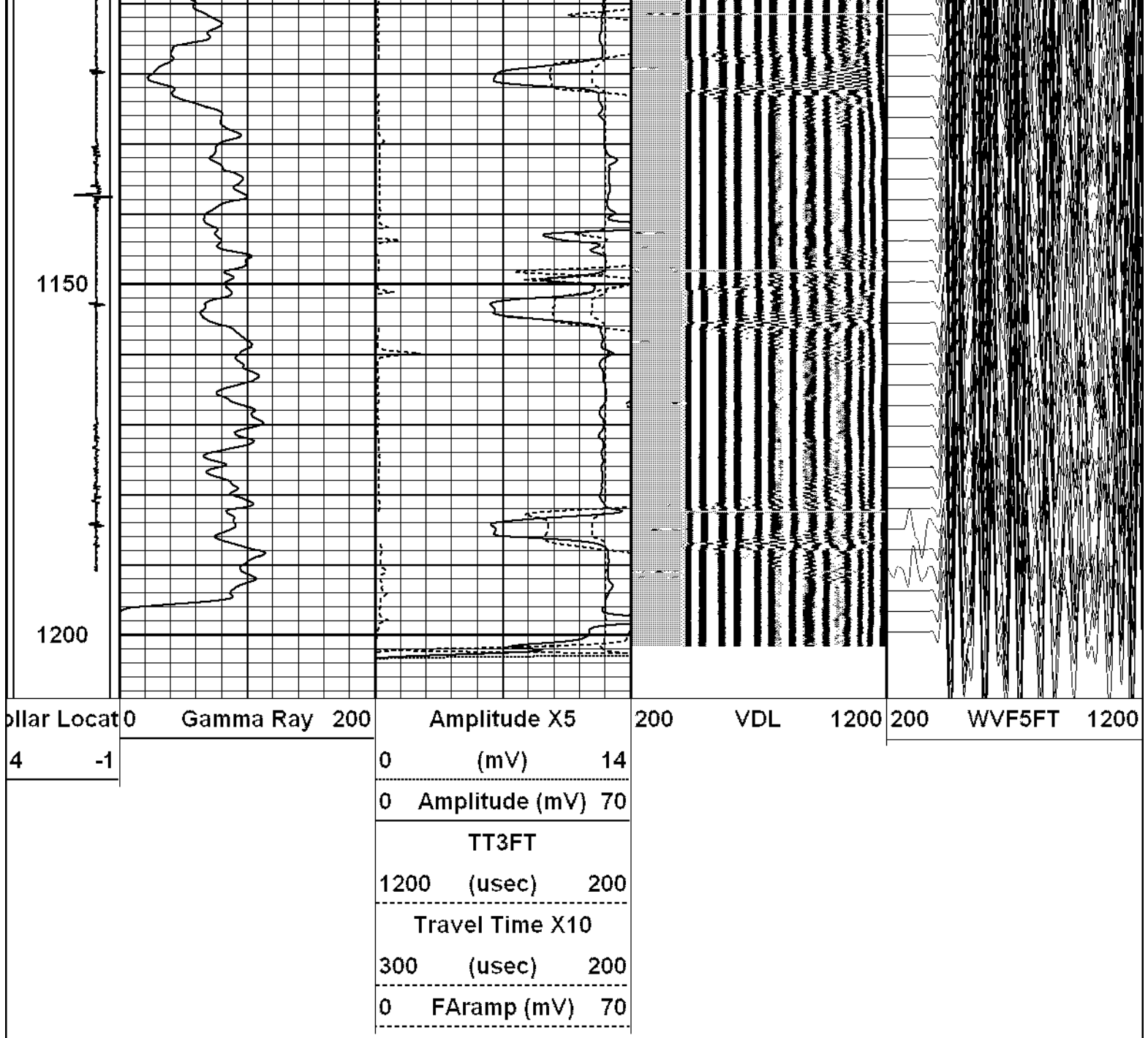
800

850



900
950
1000
1050
1100





Calibration Report

Database File: aaabone1cbl.db
 Dataset Pathname: mesaverde/bone1/run1/pass3
 Dataset Creation: Tue Oct 09 14:43:35 2012 by Log SCH 120430

CBL Calibration Report

Serial Number: DRA
 Tool Model: SIE
 Performed: Tue Oct 09 14:42:23 2012

Depth: 229.742 ft
 Casing Diameter: 5.500 in

3' Spacing 5' Spacing

Signal Zero:	0.450	0.450	mV
Calibrated Amplitude:	65.000	70.000	mV
Reading at Signal Zero:	0.016	0.017	V
Reading in Feet: Diver	0.000	0.005	V

Reading in Free Pipe:	0.269	0.825	V
Gain:	255.284	86.047	
Offset:	-3.645	-1.019	

Gamma Ray Calibration Report

Serial Number:	DRA		
Tool Model:	SIE		
Performed:	Mon Oct 08 09:16:23 2012		
Calibrator Value:	360.0		
Background Reading:	10.2	cps	
Calibrator Reading:	60.4	cps	
Sensitivity:	1.2579	/cps	