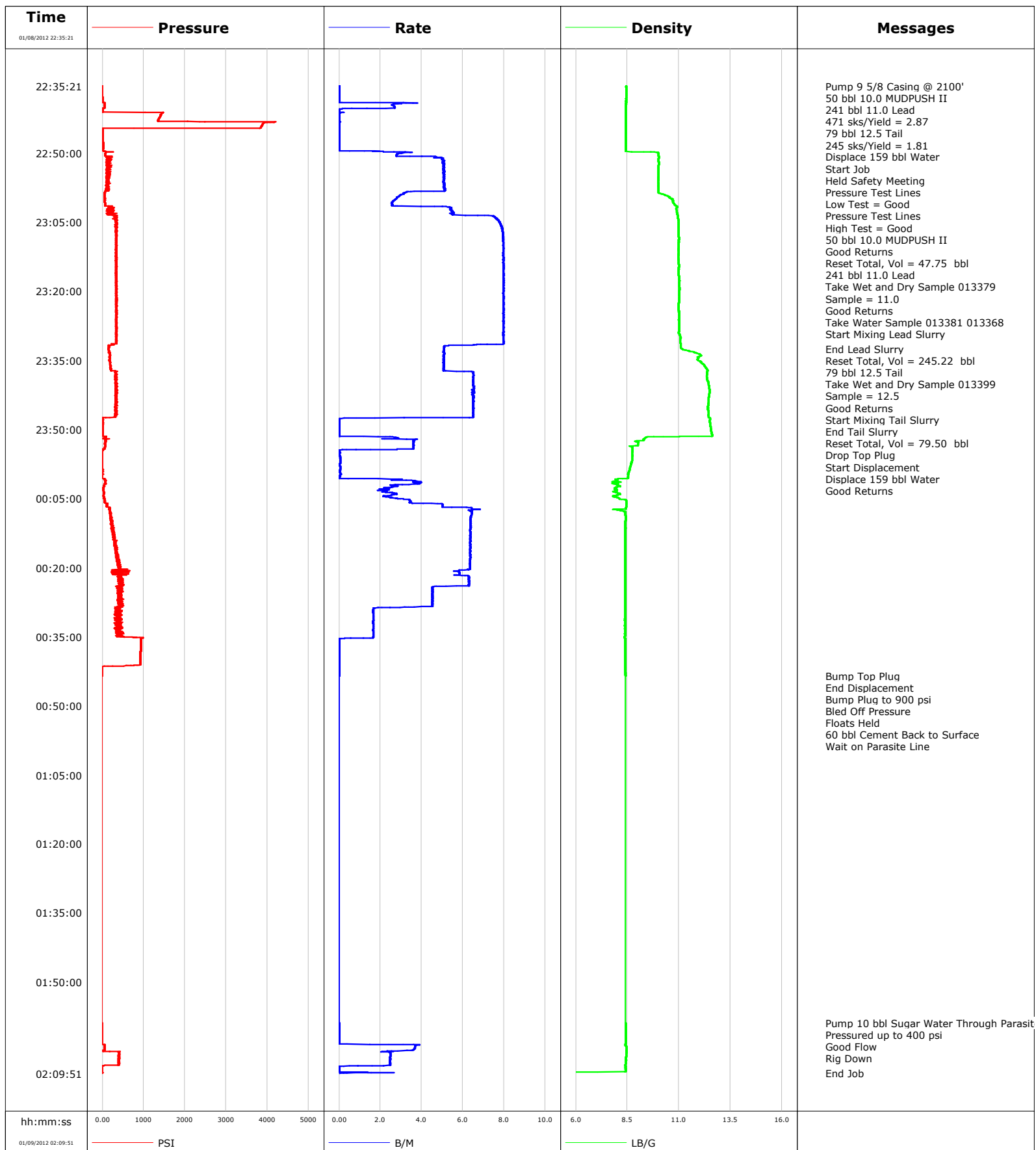


| | | | |
|-----------------|---------------|-----------------|---------------|
| Well | DW 8609E-28 | Client | ENCANA |
| Field | N PARACHUTE | SIR No. | |
| Engineer | Tom Leduc | Job Type | 9 5/8 SURFACE |
| Country | United States | Job Date | 01-08-2012 |



| Well | | | Field | | Job Start | | Customer | | Job Number | |
|-------------------------|------------------|-----------------------|---------------|--------------|-------------|---------------------------------|----------|--|------------|--|
| DW 8609E-28 DW 8609E-28 | | | N PARACHUTE | | Jan/08/2012 | | ENCANA | | BQMF-00622 | |
| Date | Time 24-hr clock | Treating Pressure PSI | Flow Rate B/M | Density LB/G | Volume BBL | Message | | | | |
| 01/08/2012 | 22:35:28 | -2 | 0.0 | 8.43 | 0.0 | | | | | |
| 01/08/2012 | 22:37:01 | -2 | 0.0 | 8.43 | 0.0 | | | | | |
| 01/08/2012 | 22:38:41 | 3 | 0.0 | 8.43 | 0.0 | | | | | |
| 01/08/2012 | 22:40:21 | 11 | 0.3 | 8.42 | 3.4 | | | | | |
| 01/08/2012 | 22:42:01 | 1402 | 0.0 | 8.42 | 3.5 | | | | | |
| 01/08/2012 | 22:43:41 | 3885 | 0.0 | 8.42 | 3.5 | | | | | |
| 01/08/2012 | 22:45:21 | 7 | 0.0 | 8.42 | 3.5 | | | | | |
| 01/08/2012 | 22:47:01 | 6 | 0.0 | 8.42 | 3.5 | | | | | |
| 01/08/2012 | 22:48:41 | 12 | 0.0 | 8.42 | 3.5 | | | | | |
| 01/08/2012 | 22:50:21 | 67 | 2.8 | 10.01 | 5.8 | | | | | |
| 01/08/2012 | 22:52:01 | 127 | 5.1 | 10.03 | 13.3 | | | | | |
| 01/08/2012 | 22:53:41 | 139 | 5.0 | 10.01 | 21.8 | | | | | |
| 01/08/2012 | 22:55:21 | 114 | 5.1 | 10.00 | 30.2 | | | | | |
| 01/08/2012 | 22:57:01 | 87 | 5.1 | 10.00 | 38.7 | | | | | |
| 01/08/2012 | 22:58:41 | 59 | 3.1 | 10.03 | 46.5 | | | | | |
| 01/08/2012 | 22:59:06 | | | | | Reset Total, Vol = 47.75 bbl | | | | |
| 01/08/2012 | 22:59:06 | | | | | 241 bbl 11.0 Lead | | | | |
| 01/08/2012 | 22:59:06 | 55 | 3.0 | 10.32 | 47.8 | | | | | |
| 01/08/2012 | 22:59:07 | | | | | Take Wet and Dry Sample 013379 | | | | |
| 01/08/2012 | 22:59:07 | | | | | Sample = 11.0 | | | | |
| 01/08/2012 | 22:59:07 | 57 | 3.0 | 10.34 | 47.8 | | | | | |
| 01/08/2012 | 22:59:08 | | | | | Good Returns | | | | |
| 01/08/2012 | 22:59:08 | 56 | 3.0 | 10.34 | 47.9 | | | | | |
| 01/08/2012 | 22:59:09 | | | | | Take Water Sample 013381 013368 | | | | |
| 01/08/2012 | 22:59:09 | 56 | 3.0 | 10.35 | 47.9 | | | | | |
| 01/08/2012 | 23:00:21 | 57 | 2.6 | 10.73 | 51.3 | | | | | |
| 01/08/2012 | 23:01:18 | | | | | Start Mixing Lead Slurry | | | | |
| 01/08/2012 | 23:01:18 | 63 | 2.6 | 10.82 | 53.7 | | | | | |
| 01/08/2012 | 23:02:01 | 201 | 5.4 | 10.86 | 56.8 | | | | | |
| 01/08/2012 | 23:03:41 | 305 | 7.5 | 10.94 | 66.3 | | | | | |
| 01/08/2012 | 23:05:21 | 329 | 7.8 | 10.98 | 79.1 | | | | | |
| 01/08/2012 | 23:07:01 | 351 | 7.9 | 10.99 | 92.3 | | | | | |
| 01/08/2012 | 23:08:41 | 329 | 8.0 | 11.00 | 105.5 | | | | | |
| 01/08/2012 | 23:10:21 | 338 | 8.0 | 10.99 | 118.8 | | | | | |
| 01/08/2012 | 23:12:01 | 337 | 8.0 | 10.98 | 132.1 | | | | | |
| 01/08/2012 | 23:13:41 | 328 | 8.0 | 10.99 | 145.4 | | | | | |
| 01/08/2012 | 23:15:21 | 333 | 8.0 | 10.99 | 158.7 | | | | | |
| 01/08/2012 | 23:17:01 | 340 | 8.0 | 11.02 | 171.9 | | | | | |
| 01/08/2012 | 23:18:41 | 335 | 8.0 | 11.02 | 185.2 | | | | | |
| 01/08/2012 | 23:20:21 | 331 | 8.0 | 11.02 | 198.5 | | | | | |
| 01/08/2012 | 23:22:01 | 349 | 8.0 | 11.01 | 211.8 | | | | | |
| 01/08/2012 | 23:23:41 | 337 | 8.0 | 10.99 | 225.1 | | | | | |
| 01/08/2012 | 23:25:21 | 338 | 8.0 | 11.01 | 238.3 | | | | | |
| 01/08/2012 | 23:27:01 | 336 | 8.0 | 11.01 | 251.6 | | | | | |
| 01/08/2012 | 23:28:41 | 340 | 8.0 | 11.01 | 264.9 | | | | | |
| 01/08/2012 | 23:30:21 | 333 | 8.0 | 11.07 | 278.2 | | | | | |
| 01/08/2012 | 23:32:01 | 160 | 5.1 | 11.09 | 290.3 | | | | | |
| 01/08/2012 | 23:32:30 | | | | | End Lead Slurry | | | | |
| 01/08/2012 | 23:32:30 | 142 | 5.1 | 11.15 | 292.8 | | | | | |
| 01/08/2012 | 23:32:32 | | | | | Reset Total, Vol = 245.22 bbl | | | | |
| 01/08/2012 | 23:32:32 | 144 | 5.1 | 11.16 | 293.0 | | | | | |
| 01/08/2012 | 23:32:33 | | | | | 79 bbl 12.5 Tail | | | | |
| 01/08/2012 | 23:32:33 | | | | | Take Wet and Dry Sample 013399 | | | | |
| 01/08/2012 | 23:32:33 | | | | | Sample = 12.5 | | | | |

| Well | | | Field | | Job Start | | Customer | | Job Number | |
|-------------------------|------------------|-----------------------|---------------|--------------|-------------|------------------------------|----------|--|------------|--|
| DW 8609E-28 DW 8609E-28 | | | N PARACHUTE | | Jan/08/2012 | | ENCANA | | BQMF-00622 | |
| Date | Time 24-hr clock | Treating Pressure PSI | Flow Rate B/M | Density LB/G | Volume BBL | Message | | | | |
| 01/08/2012 | 23:32:33 | 147 | 5.1 | 11.17 | 293.1 | | | | | |
| 01/08/2012 | 23:33:41 | 173 | 5.1 | 12.01 | 298.8 | | | | | |
| 01/08/2012 | 23:35:21 | 181 | 5.1 | 12.08 | 307.3 | | | | | |
| 01/08/2012 | 23:36:33 | | | | | Start Mixing Tail Slurry | | | | |
| 01/08/2012 | 23:36:33 | 193 | 5.1 | 12.30 | 313.4 | | | | | |
| 01/08/2012 | 23:37:01 | 203 | 5.1 | 12.37 | 315.7 | | | | | |
| 01/08/2012 | 23:38:41 | 355 | 6.5 | 12.36 | 326.1 | | | | | |
| 01/08/2012 | 23:40:21 | 334 | 6.5 | 12.45 | 336.9 | | | | | |
| 01/08/2012 | 23:42:01 | 342 | 6.4 | 12.49 | 347.8 | | | | | |
| 01/08/2012 | 23:43:41 | 312 | 6.5 | 12.44 | 358.6 | | | | | |
| 01/08/2012 | 23:45:21 | 305 | 6.5 | 12.41 | 369.4 | | | | | |
| 01/08/2012 | 23:45:48 | | | | | End Tail Slurry | | | | |
| 01/08/2012 | 23:45:48 | 328 | 6.5 | 12.41 | 372.4 | | | | | |
| 01/08/2012 | 23:45:49 | | | | | Reset Total, Vol = 79.50 bbl | | | | |
| 01/08/2012 | 23:45:49 | | | | | Drop Top Plug | | | | |
| 01/08/2012 | 23:45:49 | 328 | 6.5 | 12.41 | 372.5 | | | | | |
| 01/08/2012 | 23:45:50 | | | | | Start Displacement | | | | |
| 01/08/2012 | 23:45:50 | 351 | 6.5 | 12.41 | 372.6 | | | | | |
| 01/08/2012 | 23:45:51 | | | | | Displace 159 bbl Water | | | | |
| 01/08/2012 | 23:45:51 | | | | | Good Returns | | | | |
| 01/08/2012 | 23:45:51 | 331 | 6.5 | 12.41 | 372.7 | | | | | |
| 01/08/2012 | 23:47:01 | 318 | 6.5 | 12.45 | 380.3 | | | | | |
| 01/08/2012 | 23:48:41 | 18 | 0.0 | 12.51 | 383.3 | | | | | |
| 01/08/2012 | 23:50:21 | 9 | 0.0 | 12.57 | 383.3 | | | | | |
| 01/08/2012 | 23:52:01 | 34 | 2.6 | 9.33 | 384.6 | | | | | |
| 01/08/2012 | 23:53:41 | 70 | 3.6 | 8.69 | 390.5 | | | | | |
| 01/08/2012 | 23:55:21 | -8 | 0.0 | 8.73 | 392.9 | | | | | |
| 01/08/2012 | 23:57:01 | -7 | 0.1 | 8.71 | 393.0 | | | | | |
| 01/08/2012 | 23:58:41 | 9 | 0.1 | 8.61 | 393.0 | | | | | |
| 01/09/2012 | 00:00:21 | -7 | 0.0 | 8.52 | 393.1 | | | | | |
| 01/09/2012 | 00:02:01 | 41 | 2.7 | 8.08 | 397.7 | | | | | |
| 01/09/2012 | 00:03:41 | 40 | 2.5 | 7.98 | 401.6 | | | | | |
| 01/09/2012 | 00:05:21 | 51 | 3.4 | 8.43 | 406.1 | | | | | |
| 01/09/2012 | 00:07:01 | 174 | 6.4 | 8.43 | 413.5 | | | | | |
| 01/09/2012 | 00:08:41 | 196 | 6.4 | 8.41 | 424.2 | | | | | |
| 01/09/2012 | 00:10:21 | 221 | 6.4 | 8.40 | 434.8 | | | | | |
| 01/09/2012 | 00:12:01 | 269 | 6.4 | 8.40 | 445.5 | | | | | |
| 01/09/2012 | 00:13:41 | 295 | 6.4 | 8.40 | 456.1 | | | | | |
| 01/09/2012 | 00:15:21 | 287 | 6.4 | 8.40 | 466.7 | | | | | |
| 01/09/2012 | 00:17:01 | 347 | 6.3 | 8.40 | 477.3 | | | | | |
| 01/09/2012 | 00:18:41 | 367 | 6.3 | 8.40 | 487.9 | | | | | |
| 01/09/2012 | 00:20:21 | 604 | 6.3 | 8.40 | 498.4 | | | | | |
| 01/09/2012 | 00:22:01 | 451 | 6.3 | 8.40 | 508.3 | | | | | |
| 01/09/2012 | 00:23:41 | 395 | 6.3 | 8.40 | 518.8 | | | | | |
| 01/09/2012 | 00:25:21 | 370 | 4.5 | 8.40 | 527.0 | | | | | |
| 01/09/2012 | 00:27:01 | 460 | 4.5 | 8.40 | 534.6 | | | | | |
| 01/09/2012 | 00:28:41 | 393 | 2.5 | 8.40 | 541.9 | | | | | |
| 01/09/2012 | 00:30:21 | 445 | 1.7 | 8.39 | 544.7 | | | | | |
| 01/09/2012 | 00:32:01 | 412 | 1.6 | 8.39 | 547.4 | | | | | |
| 01/09/2012 | 00:33:41 | 380 | 1.6 | 8.39 | 550.2 | | | | | |
| 01/09/2012 | 00:35:21 | 949 | 0.6 | 8.39 | 552.9 | | | | | |
| 01/09/2012 | 00:37:01 | 931 | 0.0 | 8.40 | 552.9 | | | | | |
| 01/09/2012 | 00:38:41 | 927 | 0.0 | 8.40 | 552.9 | | | | | |
| 01/09/2012 | 00:40:21 | 925 | 0.0 | 8.40 | 552.9 | | | | | |

| Well | | | Field | | Job Start | | Customer | | Job Number | |
|-------------------------|------------------|-----------------------|-------------|---------------|--------------|------------|--|--|------------|--|
| DW 8609E-28 DW 8609E-28 | | | N PARACHUTE | | Jan/08/2012 | | ENCANA | | BQMF-00622 | |
| Date | Time 24-hr clock | Treating Pressure PSI | | Flow Rate B/M | Density LB/G | Volume BBL | Message | | | |
| 01/09/2012 | 00:43:28 | | | | | | Bump Top Plug | | | |
| 01/09/2012 | 00:43:28 | -5 | | 0.0 | 8.40 | 552.9 | | | | |
| 01/09/2012 | 00:43:29 | | | | | | End Displacement | | | |
| 01/09/2012 | 00:43:29 | -5 | | 0.0 | 8.40 | 552.9 | | | | |
| 01/09/2012 | 00:43:31 | | | | | | Bump Plug to 900 psi | | | |
| 01/09/2012 | 00:43:31 | | | | | | Bled Off Pressure | | | |
| 01/09/2012 | 00:43:31 | | | | | | Floats Held | | | |
| 01/09/2012 | 00:43:31 | | | | | | 60 bbl Cement Back to Surface | | | |
| 01/09/2012 | 00:43:31 | -4 | | 0.0 | 8.41 | 552.9 | | | | |
| 01/09/2012 | 00:43:32 | | | | | | Wait on Parasite Line | | | |
| 01/09/2012 | 00:43:32 | -4 | | 0.0 | 8.41 | 552.9 | | | | |
| 01/09/2012 | 01:58:54 | | | | | | Pump 10 bbl Sugar Water Through Parasite | | | |
| 01/09/2012 | 01:58:54 | | | | | | Pressured up to 400 psi | | | |
| 01/09/2012 | 01:58:54 | | | | | | Good Flow | | | |
| 01/09/2012 | 01:58:54 | | | | | | Rig Down | | | |
| 01/09/2012 | 01:58:54 | -4 | | 0.0 | 8.42 | 552.9 | | | | |
| 01/09/2012 | 02:00:21 | -9 | | 0.0 | 8.42 | 552.9 | | | | |
| 01/09/2012 | 02:02:01 | -9 | | 0.0 | 8.42 | 552.9 | | | | |
| 01/09/2012 | 02:03:41 | 55 | | 3.9 | 8.41 | 553.3 | | | | |
| 01/09/2012 | 02:05:21 | 397 | | 2.5 | 8.45 | 558.9 | | | | |
| 01/09/2012 | 02:07:01 | 398 | | 2.5 | 8.43 | 563.0 | | | | |
| 01/09/2012 | 02:08:41 | -7 | | 0.0 | 8.40 | 566.0 | | | | |
| 01/09/2012 | 02:09:48 | | | | | | End Job | | | |

Post Job Summary

| | | | | | | | | |
|--|------------|-------------------------------------|--------------------------------------|---------------------------|---|---|---|--|
| Average Pump Rates, bbl/min | | | | | Volume of Fluid Injected, bbl | | | |
| Slurry 5.1 | N2 | Mud 0.0 | Maximum Rate 8.0 | Total Slurry 566.2 | Mud 0.0 | Spacer 53.7 | N2 | |
| Treating Pressure Summary, psi | | | | | Breakdown Fluid | | | |
| Maximum 4195 | Final 0 | Average 323 | Bump Plug to 900 | Breakdown | Type | Volume | Density | |
| Avg. N2 Percent | | Designed Slurry Volume 320.0 bbl | Displacement 180.5 bbl | Mix Water Temp 53 degF | Cement Circulated to Surface? <input checked="" type="checkbox"/> | | Volume | |
| | | | | | Washed Thru Perfs <input type="checkbox"/> | | To | |
| Customer or Authorized Representative IRA COX | | | Schlumberger Supervisor Tom Leduc | | | Circulation Lost <input type="checkbox"/> | Job Completed <input checked="" type="checkbox"/> | |
| | | | | | | - | - | |