

SWEPI LP
ILES MOUNTAIN #1-36
MOFFAT COUNTY, COLORADO
SECTION 36, T5N, R92W, 6th P.M.

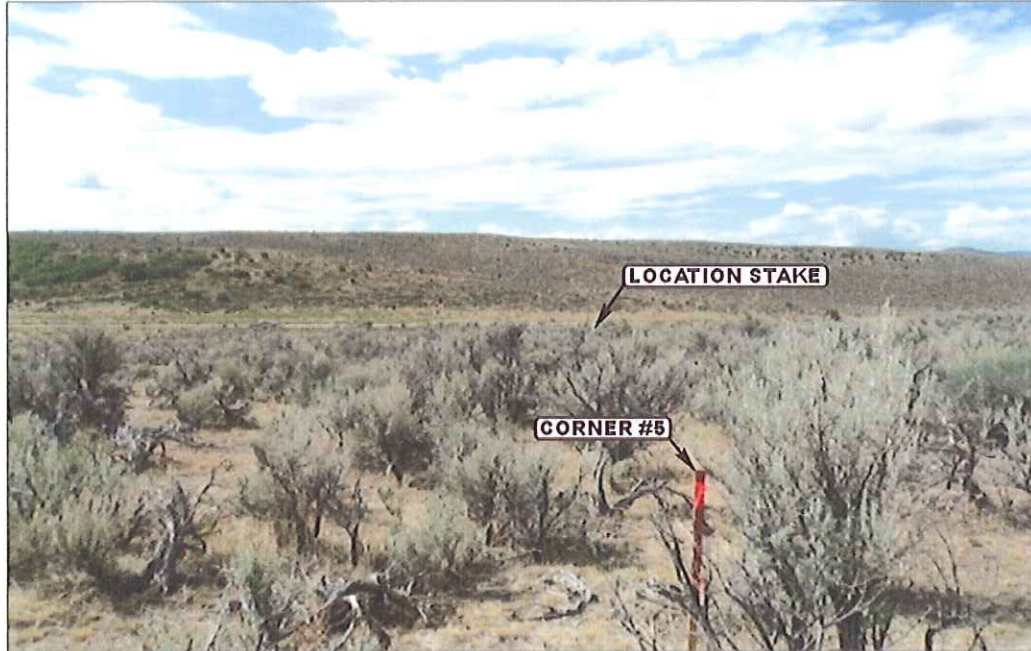


PHOTO: VIEW OF LOCATION STAKE

CAMERA ANGLE: SOUTHWESTERLY



PHOTO: VIEW FROM BEGINNING OF PROPOSED ACCESS

CAMERA ANGLE: NORTHERLY



Uintah Engineering & Land Surveying
85 South 200 East Vernal, Utah 84078
(435) 789-1017 * FAX (435) 789-1813

LOCATION PHOTOS

03 08 11
MONTH DAY YEAR

PHOTO

P1

TAKEN BY: A.F. | DRAWN BY: C.A.G. | REV: B.G. 07-25-12

SWEPI LP
ILES MOUNTAIN #1-36
MOFFAT COUNTY, COLORADO
SECTION 36, T5N, R92W, 6th P.M.



PHOTO: VIEW OF LOCATION STAKE

CAMERA ANGLE: NORTHERLY

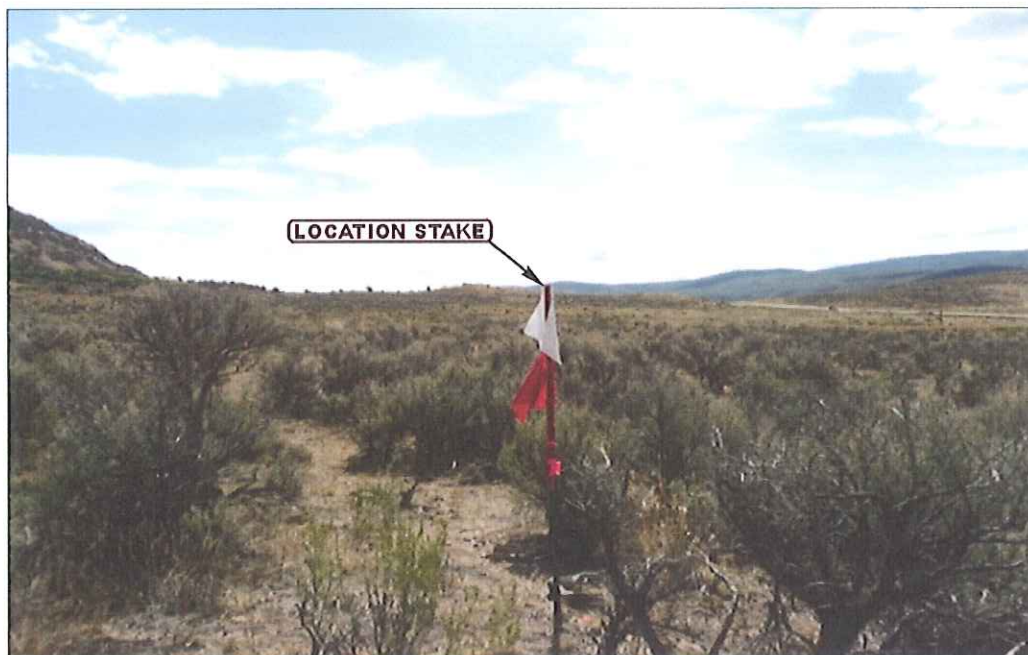


PHOTO: VIEW OF LOCATION STAKE

CAMERA ANGLE: EASTERLY



UELS

Uintah Engineering & Land Surveying
85 South 200 East Vernal, Utah 84078
(435) 789-1017 * FAX (435) 789-1813

- Since 1964 -

LOCATION PHOTOS

03 **08** **11**
MONTH DAY YEAR

TAKEN BY: A.F. DRAWN BY: C.A.G. REV: B.G. 07-25-12

PHOTO
P2

SWEPI LP
ILES MOUNTAIN #1-36
MOFFAT COUNTY, COLORADO
SECTION 36, T5N, R92W, 6th P.M.



PHOTO: VIEW OF LOCATION STAKE

CAMERA ANGLE: SOUTHERLY



PHOTO: VIEW OF LOCATION STAKE

CAMERA ANGLE: WESTERLY



UELS

Uintah Engineering & Land Surveying
85 South 200 East Vernal, Utah 84078
(435) 789-1017 * FAX (435) 789-1813

LOCATION PHOTOS

03 **08** **11**
MONTH DAY YEAR

TAKEN BY: A.F. | DRAWN BY: C.A.G. | REV: B.G. 07-25-12

PHOTO
P3