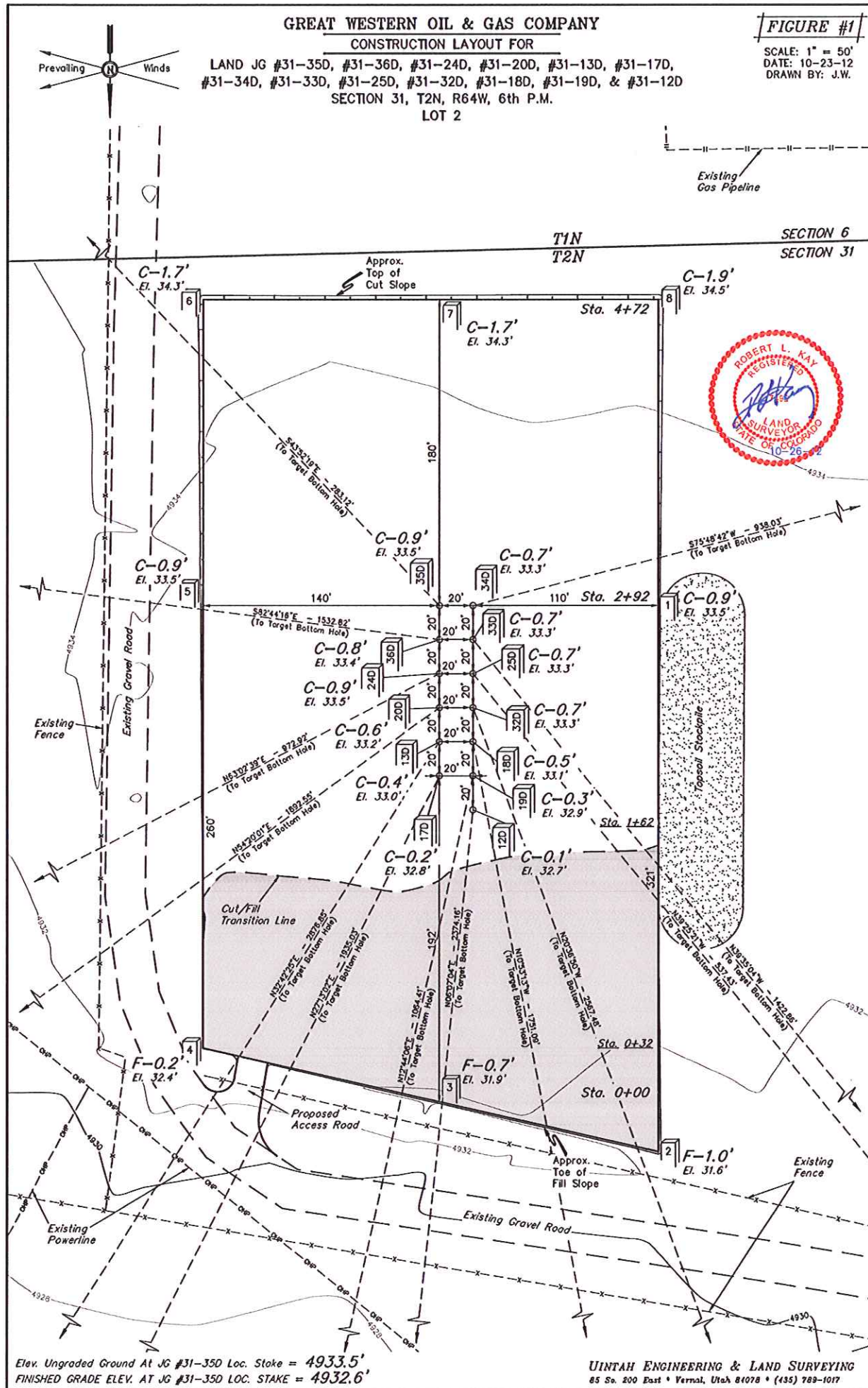


GREAT WESTERN OIL & GAS COMPANY
CONSTRUCTION LAYOUT FOR

LAND JG #31-35D, #31-36D, #31-24D, #31-20D, #31-13D, #31-17D,
 #31-34D, #31-33D, #31-25D, #31-32D, #31-18D, #31-19D, & #31-12D
 SECTION 31, T2N, R64W, 6th P.M.
 LOT 2

FIGURE #1

SCALE: 1" = 50'
 DATE: 10-23-12
 DRAWN BY: J.W.



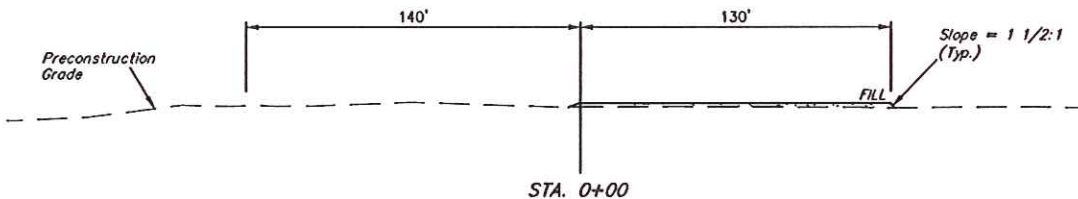
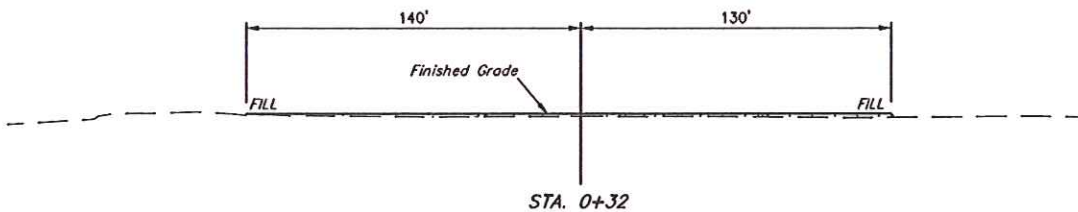
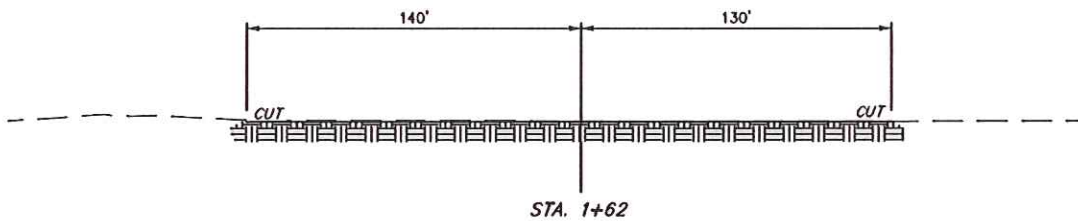
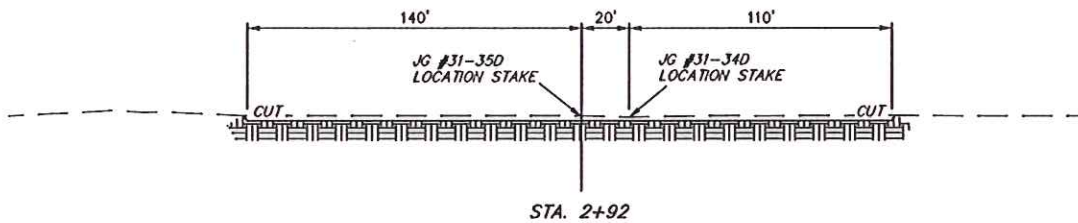
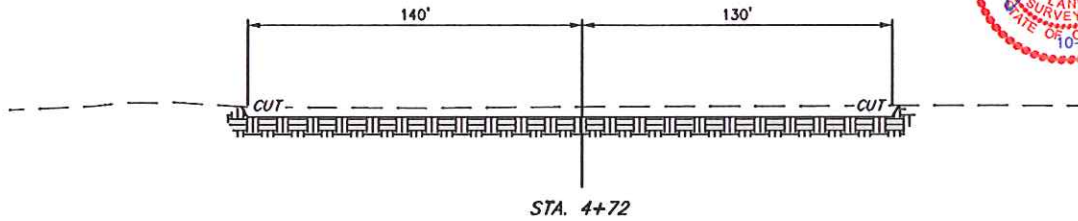
Elev. Ungraded Ground At JG #31-35D Loc. Stake = 4933.5'
 FINISHED GRADE ELEV. AT JG #31-35D LOC. STAKE = 4932.6'

UINTAH ENGINEERING & LAND SURVEYING
 85 So. 200 East • Vernal, Utah 84078 • (435) 789-1017

X-Section
Scale
1" = 50'
DATE: 10-23-12
DRAWN BY: J.W.

GREAT WESTERN OIL & GAS COMPANY
CONSTRUCTION LAYOUT CROSS SECTIONS FOR
LAND JG #31-35D, #31-36D, #31-24D, #31-20D, #31-13D, #31-17D,
#31-34D, #31-33D, #31-25D, #31-32D, #31-18D, #31-19D, & #31-12D
SECTION 31, T2N, R64W, 6th P.M.
LOT 2

FIGURE #2



NOTE:

Topsoil should not be
Stripped Below Finished
Grade on Substructure Area.

* NOTE:
FILL QUANTITY INCLUDES
5% FOR COMPACTION

APPROXIMATE YARDAGES

(6") Topsoil Stripping = 2,390 Cu. Yds.
Remaining Location = 1,420 Cu. Yds.
TOTAL CUT = 3,810 CU. YDS.
FILL = 1,420 CU. YDS.

EXCESS MATERIAL = 2,390 Cu. Yds.
Topsoil = 2,390 Cu. Yds.
EXCESS UNBALANCE = 0 Cu. Yds.
(After Interim Rehabilitation)

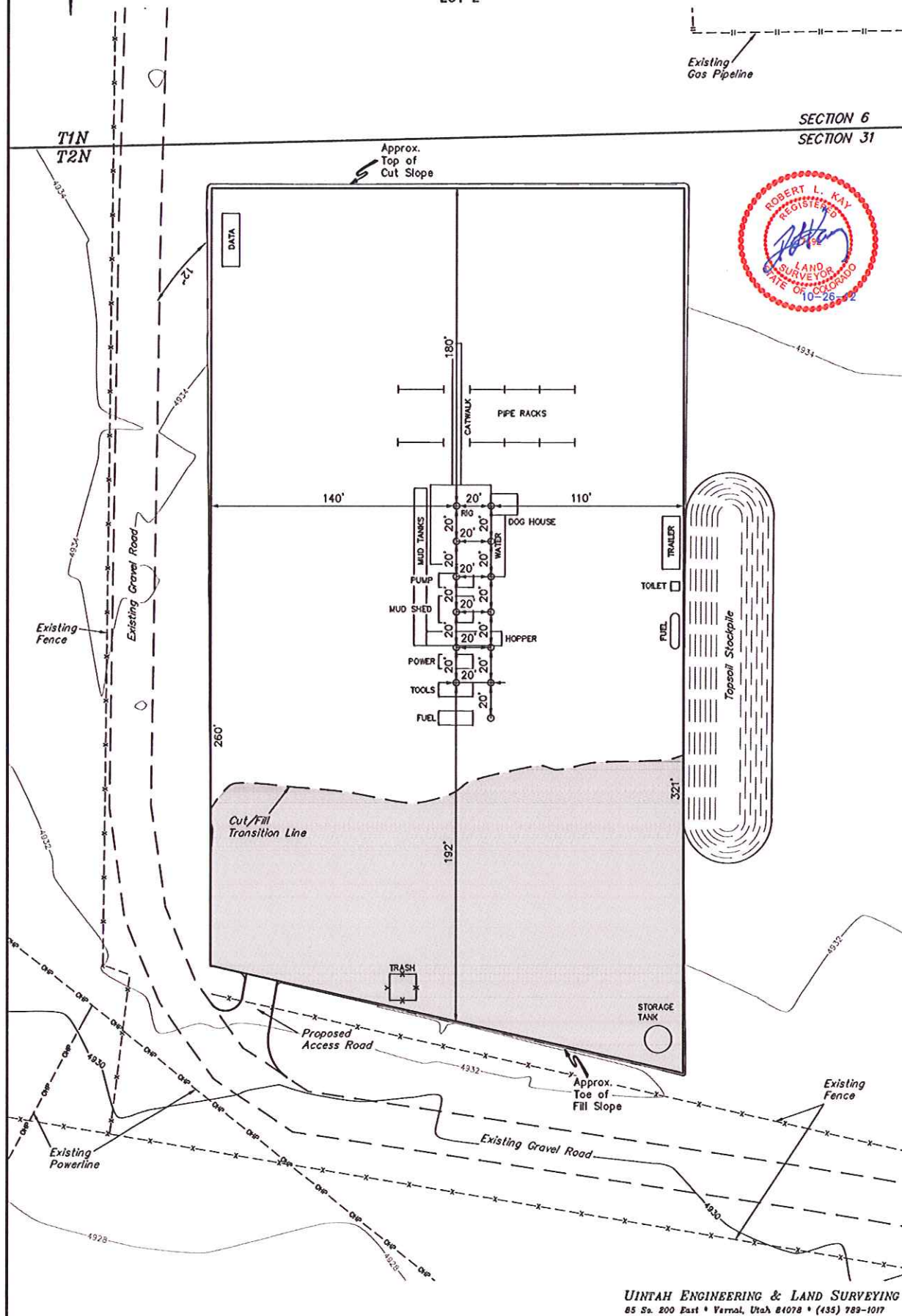
APPROXIMATE ACREAGES
WELL SITE DISTURBANCE = ± 3.205 ACRES
ACCESS ROAD DISTURBANCE = ± 0.026 ACRES
TOTAL = ± 3.231 ACRES

UINTAH ENGINEERING & LAND SURVEYING
85 So. 200 East • Vernal, Utah 84078 • (435) 789-1017

TYPICAL RIG LAYOUT FOR

FIGURE #3

SCALE: 1" = 50'
DATE: 10-23-12
DRAWN BY: J.W.



UINTAH ENGINEERING & LAND SURVEYING
85 So. 200 East • Vernal, Utah 84078 • (435) 789-1017