



SHELL E&P
MOFFAT COUNTY, CO
ILES MOUNTAIN 1-36

Plan: PLAN #2

Standard Planning Report

3 August, 2012





Project: MOFFAT COUNTY, CO
Site: ILES MOUNTAIN 1-36
Well: ILES MOUNTAIN 1-36
Wellbore: ILES MOUNTAIN 1-36
Design: Design #2
Latitude: 40° 20' 22.020 N
Longitude: 107° 39' 58.550 W
GL: 6536.00
KB: RIG KB @ 6563.00ft (NABORS 16)



WELLBORE TARGET DETAILS (LAT/LONG)

Name	TVD	+N/-S	+E/-W	Latitude	Longitude	Shape
PBHL - ILES MOUNTAIN 1-36	3600.00	1115.30	2157.60	40° 20' 33.041 N	107° 39' 30.685 W	Point

WELL DETAILS: ILES MOUNTAIN 1-36

+N/-S	+E/-W	Northing	Ground Level: Easting	6536.00 Latitude	Longitude	Slot
0.00	0.00	1373878.00	2396194.27	40° 20' 22.020 N	107° 39' 58.550 W	

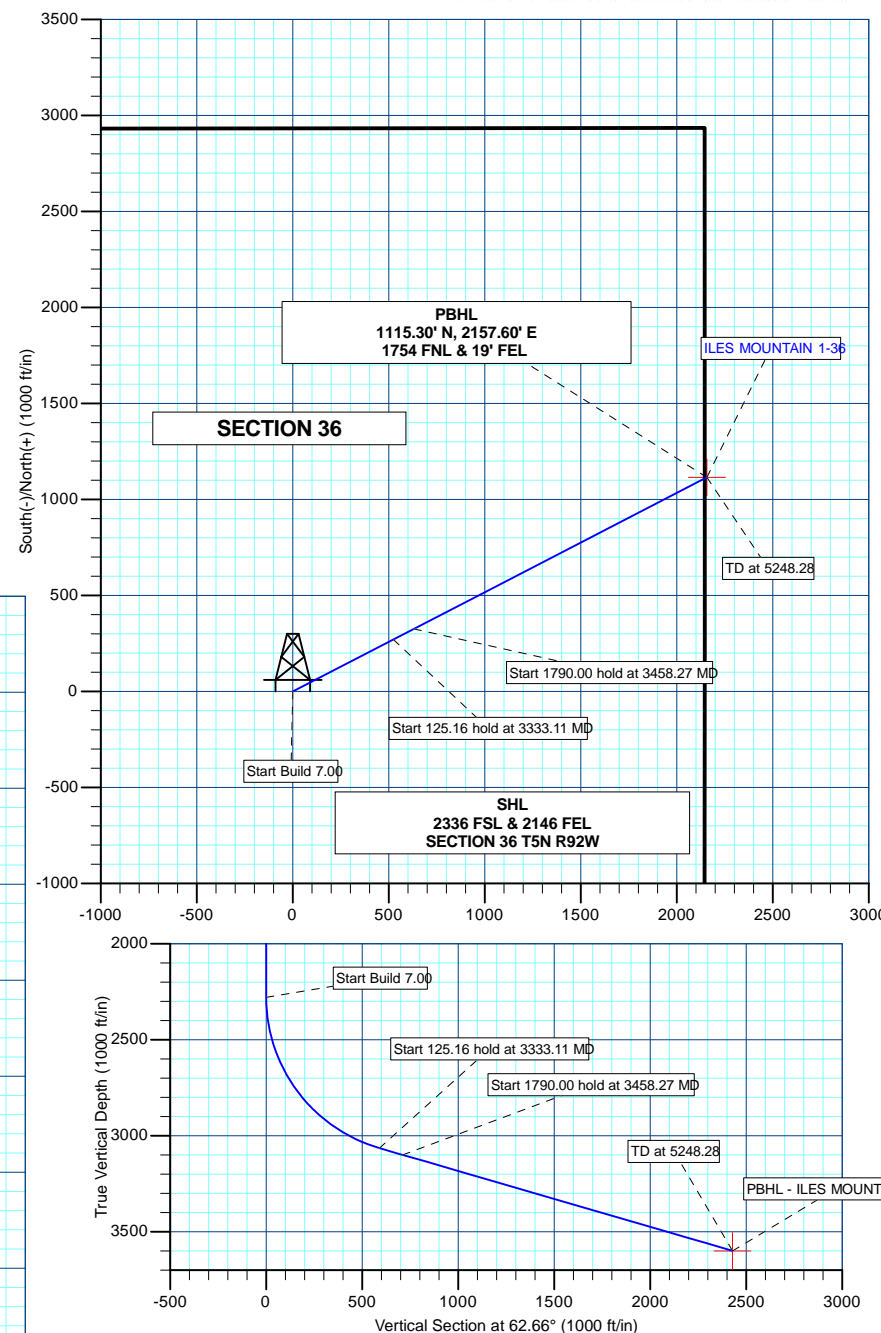
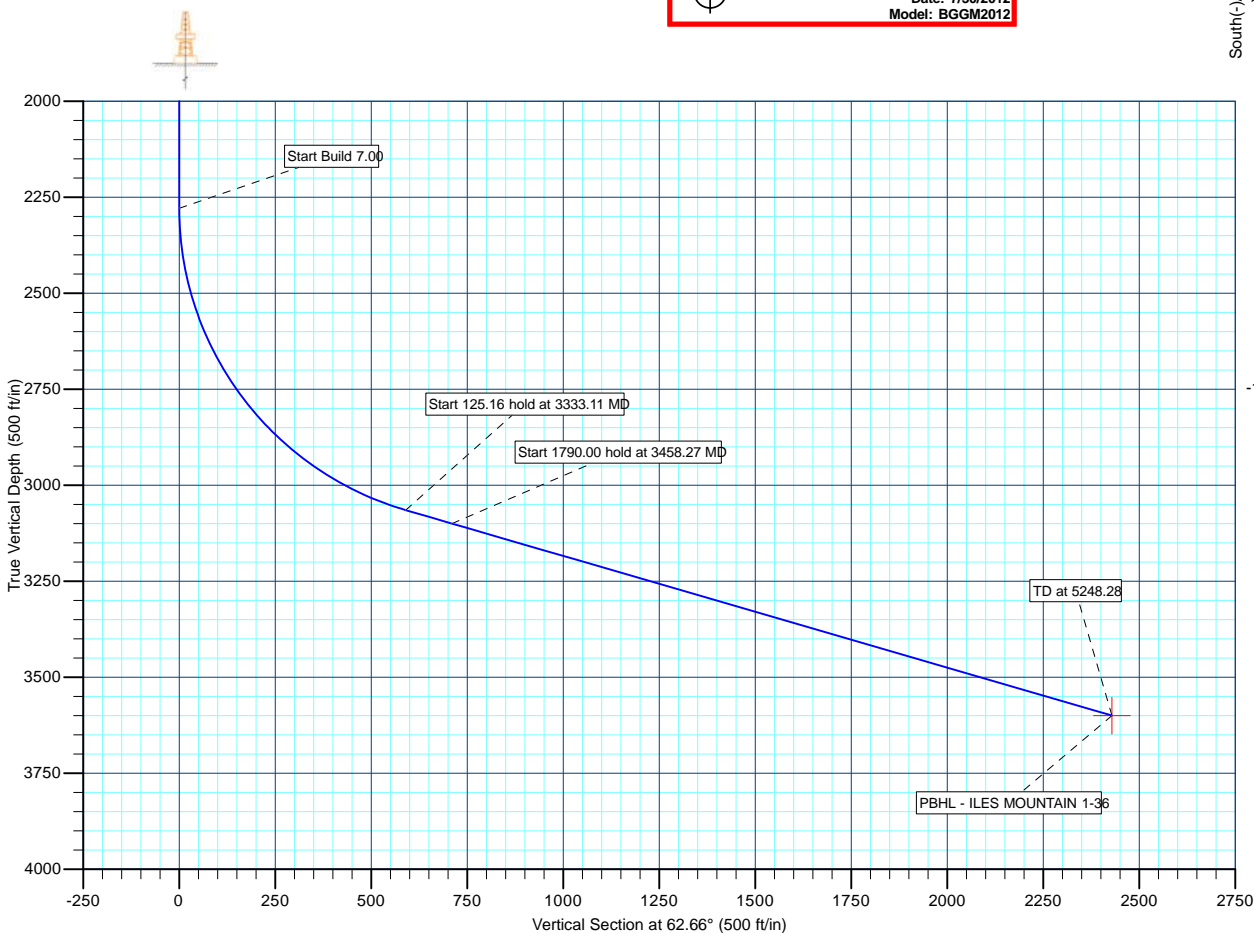
SECTION DETAILS

MD	Inc	Azi	TVD	+N/-S	+E/-W	Dleg	TFace	Vsect	Annotation
0.00	0.00	0.00	0.00	0.00	0.00	0.00	0.00	0.00	
2279.11	0.00	0.00	2279.11	0.00	0.00	0.00	0.00	0.00	Start Build 7.00
3333.11	73.78	62.66	3065.04	270.87	524.01	7.00	62.66	589.88	Start 125.16 hold at 3333.11 MD
3458.27	73.78	62.66	3100.00	326.06	630.77	0.00	0.00	710.06	Start 1790.00 hold at 3458.27 MD
5248.28	73.78	62.66	3600.00	1115.30	2157.60	0.00	0.00	2428.81	TD at 5248.28



Azimuths to True North
Magnetic North: 10.17°

Magnetic Field
Strength: 52570.6snT
Dip Angle: 66.44°
Date: 7/30/2012
Model: BGGM2012



Plan: Design #2 (ILES MOUNTAIN 1-36/ILES MOUNTAIN 1-36)

Created By: TRACY WILLIAMS

Date: 13:39, August 03 2012



SHELL E&P

MOFFAT COUNTY, CO

ILES MOUNTAIN 1-36

ILES MOUNTAIN 1-36

ILES MOUNTAIN 1-36

Plan: Design #2

Standard Planning Report

03 August, 2012



Weatherford®



Database:	EDM 5000.1 Single User Db	Local Co-ordinate Reference:	Well ILES MOUNTAIN 1-36
Company:	SHELL E&P	TVD Reference:	RIG KB @ 6563.00ft (NABORS 16)
Project:	MOFFAT COUNTY, CO	MD Reference:	RIG KB @ 6563.00ft (NABORS 16)
Site:	ILES MOUNTAIN 1-36	North Reference:	True
Well:	ILES MOUNTAIN 1-36	Survey Calculation Method:	Minimum Curvature
Wellbore:	ILES MOUNTAIN 1-36		
Design:	Design #2		

Project	MOFFAT COUNTY, CO		
Map System:	US State Plane 1983	System Datum:	Mean Sea Level
Geo Datum:	North American Datum 1983		
Map Zone:	Colorado Northern Zone		

Site		ILES MOUNTAIN 1-36			
Site Position:		Northing:	1,373,878.00 usft	Latitude:	40° 20' 22.020 N
From:	Lat/Long	Easting:	2,396,194.27 usft	Longitude:	107° 39' 58.550 W
Position Uncertainty:	0.00 ft	Slot Radius:	13-3/16"	Grid Convergence:	-1.40 °

Well	ILES MOUNTAIN 1-36					
Well Position	+N/-S	0.00 ft	Northing:	1,373,878.00 usft	Latitude:	40° 20' 22.020 N
	+E/-W	0.00 ft	Easting:	2,396,194.27 usft	Longitude:	107° 39' 58.550 W
Position Uncertainty		0.00 ft	Wellhead Elevation:	ft	Ground Level:	6,536.00 ft

Wellbore	ILES MOUNTAIN 1-36				
Magnetics	Model Name	Sample Date	Declination (°)	Dip Angle (°)	Field Strength (nT)
	BGGM2012	7/30/2012	10.17	66.44	52,571

Design	Design #2			
Audit Notes:				
Version:	Phase:	PLAN	Tie On Depth:	0.00
Vertical Section:	Depth From (TVD) (ft)	+N/-S (ft)	+E/-W (ft)	Direction (°)
	0.00	0.00	0.00	62.66

Plan Sections										
Measured Depth (ft)	Inclination (°)	Azimuth (°)	Vertical Depth (ft)	+N/-S (ft)	+E/-W (ft)	Dogleg Rate (°/100usft)	Build Rate (°/100usft)	Turn Rate (°/100usft)	TFO (°)	Target
0.00	0.00	0.00	0.00	0.00	0.00	0.00	0.00	0.00	0.00	
2,279.11	0.00	0.00	2,279.11	0.00	0.00	0.00	0.00	0.00	0.00	
3,333.11	73.78	62.66	3,065.04	270.87	524.01	7.00	7.00	0.00	62.66	
3,458.27	73.78	62.66	3,100.00	326.06	630.77	0.00	0.00	0.00	0.00	
5,248.28	73.78	62.66	3,600.00	1,115.30	2,157.60	0.00	0.00	0.00	0.00	PBHL - ILES MOUNT.



Database:	EDM 5000.1 Single User Db	Local Co-ordinate Reference:	Well ILES MOUNTAIN 1-36
Company:	SHELL E&P	TVD Reference:	RIG KB @ 6563.00ft (NABORS 16)
Project:	MOFFAT COUNTY, CO	MD Reference:	RIG KB @ 6563.00ft (NABORS 16)
Site:	ILES MOUNTAIN 1-36	North Reference:	True
Well:	ILES MOUNTAIN 1-36	Survey Calculation Method:	Minimum Curvature
Wellbore:	ILES MOUNTAIN 1-36		
Design:	Design #2		

Planned Survey									
Measured Depth (ft)	Inclination (°)	Azimuth (°)	Vertical Depth (ft)	+N/-S (ft)	+E/-W (ft)	Vertical Section (ft)	Dogleg Rate (°/100usft)	Build Rate (°/100usft)	Turn Rate (°/100usft)
0.00	0.00	0.00	0.00	0.00	0.00	0.00	0.00	0.00	0.00
100.00	0.00	0.00	100.00	0.00	0.00	0.00	0.00	0.00	0.00
200.00	0.00	0.00	200.00	0.00	0.00	0.00	0.00	0.00	0.00
300.00	0.00	0.00	300.00	0.00	0.00	0.00	0.00	0.00	0.00
400.00	0.00	0.00	400.00	0.00	0.00	0.00	0.00	0.00	0.00
500.00	0.00	0.00	500.00	0.00	0.00	0.00	0.00	0.00	0.00
600.00	0.00	0.00	600.00	0.00	0.00	0.00	0.00	0.00	0.00
700.00	0.00	0.00	700.00	0.00	0.00	0.00	0.00	0.00	0.00
800.00	0.00	0.00	800.00	0.00	0.00	0.00	0.00	0.00	0.00
900.00	0.00	0.00	900.00	0.00	0.00	0.00	0.00	0.00	0.00
1,000.00	0.00	0.00	1,000.00	0.00	0.00	0.00	0.00	0.00	0.00
1,100.00	0.00	0.00	1,100.00	0.00	0.00	0.00	0.00	0.00	0.00
1,200.00	0.00	0.00	1,200.00	0.00	0.00	0.00	0.00	0.00	0.00
1,300.00	0.00	0.00	1,300.00	0.00	0.00	0.00	0.00	0.00	0.00
1,400.00	0.00	0.00	1,400.00	0.00	0.00	0.00	0.00	0.00	0.00
1,500.00	0.00	0.00	1,500.00	0.00	0.00	0.00	0.00	0.00	0.00
1,600.00	0.00	0.00	1,600.00	0.00	0.00	0.00	0.00	0.00	0.00
1,700.00	0.00	0.00	1,700.00	0.00	0.00	0.00	0.00	0.00	0.00
1,800.00	0.00	0.00	1,800.00	0.00	0.00	0.00	0.00	0.00	0.00
1,900.00	0.00	0.00	1,900.00	0.00	0.00	0.00	0.00	0.00	0.00
2,000.00	0.00	0.00	2,000.00	0.00	0.00	0.00	0.00	0.00	0.00
2,100.00	0.00	0.00	2,100.00	0.00	0.00	0.00	0.00	0.00	0.00
2,200.00	0.00	0.00	2,200.00	0.00	0.00	0.00	0.00	0.00	0.00
Start Build 7.00									
2,279.11	0.00	0.00	2,279.11	0.00	0.00	0.00	0.00	0.00	0.00
2,300.00	1.46	62.66	2,300.00	0.12	0.24	0.27	7.00	7.00	0.00
2,350.00	4.96	62.66	2,349.91	1.41	2.73	3.07	7.00	7.00	0.00
2,400.00	8.46	62.66	2,399.56	4.09	7.92	8.91	7.00	7.00	0.00
2,450.00	11.96	62.66	2,448.76	8.16	15.79	17.77	7.00	7.00	0.00
2,500.00	15.46	62.66	2,497.33	13.60	26.32	29.62	7.00	7.00	0.00
2,550.00	18.96	62.66	2,545.08	20.40	39.46	44.42	7.00	7.00	0.00
2,600.00	22.46	62.66	2,591.84	28.52	55.16	62.10	7.00	7.00	0.00
2,650.00	25.96	62.66	2,637.44	37.93	73.38	82.60	7.00	7.00	0.00
2,700.00	29.46	62.66	2,681.70	48.61	94.03	105.85	7.00	7.00	0.00
2,750.00	32.96	62.66	2,724.45	60.50	117.04	131.76	7.00	7.00	0.00
2,800.00	36.46	62.66	2,765.55	73.57	142.33	160.22	7.00	7.00	0.00
2,850.00	39.96	62.66	2,804.83	87.77	169.80	191.15	7.00	7.00	0.00
2,900.00	43.46	62.66	2,842.15	103.05	199.35	224.41	7.00	7.00	0.00
2,950.00	46.96	62.66	2,877.36	119.34	230.87	259.89	7.00	7.00	0.00
3,000.00	50.46	62.66	2,910.35	136.59	264.24	297.46	7.00	7.00	0.00
3,050.00	53.96	62.66	2,940.98	154.73	299.34	336.97	7.00	7.00	0.00
3,100.00	57.46	62.66	2,969.15	173.70	336.03	378.27	7.00	7.00	0.00
3,150.00	60.96	62.66	2,994.74	193.42	374.18	421.22	7.00	7.00	0.00
3,200.00	64.46	62.66	3,017.66	213.82	413.65	465.65	7.00	7.00	0.00
3,250.00	67.96	62.66	3,037.82	234.83	454.29	511.39	7.00	7.00	0.00
3,300.00	71.46	62.66	3,055.15	256.36	495.94	558.28	7.00	7.00	0.00
Start 125.16 hold at 3333.11 MD									
3,333.11	73.78	62.66	3,065.04	270.87	524.01	589.88	7.00	7.00	0.00
3,400.00	73.78	62.66	3,083.73	300.36	581.06	654.11	0.00	0.00	0.00
Start 1790.00 hold at 3458.27 MD									
3,458.27	73.78	62.66	3,100.00	326.06	630.77	710.06	0.00	0.00	0.00
3,500.00	73.78	62.66	3,111.66	344.45	666.36	750.12	0.00	0.00	0.00
3,600.00	73.78	62.66	3,139.59	388.55	751.66	846.14	0.00	0.00	0.00



Database:	EDM 5000.1 Single User Db	Local Co-ordinate Reference:	Well ILES MOUNTAIN 1-36
Company:	SHELL E&P	TVD Reference:	RIG KB @ 6563.00ft (NABORS 16)
Project:	MOFFAT COUNTY, CO	MD Reference:	RIG KB @ 6563.00ft (NABORS 16)
Site:	ILES MOUNTAIN 1-36	North Reference:	True
Well:	ILES MOUNTAIN 1-36	Survey Calculation Method:	Minimum Curvature
Wellbore:	ILES MOUNTAIN 1-36		
Design:	Design #2		

Planned Survey									
Measured Depth (ft)	Inclination (°)	Azimuth (°)	Vertical Depth (ft)	+N/-S (ft)	+E/-W (ft)	Vertical Section (ft)	Dogleg Rate (°/100usft)	Build Rate (°/100usft)	Turn Rate (°/100usft)
3,700.00	73.78	62.66	3,167.52	432.64	836.96	942.16	0.00	0.00	0.00
3,800.00	73.78	62.66	3,195.46	476.73	922.26	1,038.18	0.00	0.00	0.00
3,900.00	73.78	62.66	3,223.39	520.82	1,007.55	1,134.20	0.00	0.00	0.00
4,000.00	73.78	62.66	3,251.32	564.91	1,092.85	1,230.22	0.00	0.00	0.00
4,100.00	73.78	62.66	3,279.26	609.00	1,178.15	1,326.24	0.00	0.00	0.00
4,200.00	73.78	62.66	3,307.19	653.10	1,263.45	1,422.26	0.00	0.00	0.00
4,300.00	73.78	62.66	3,335.12	697.19	1,348.74	1,518.28	0.00	0.00	0.00
4,400.00	73.78	62.66	3,363.05	741.28	1,434.04	1,614.30	0.00	0.00	0.00
4,500.00	73.78	62.66	3,390.99	785.37	1,519.34	1,710.32	0.00	0.00	0.00
4,600.00	73.78	62.66	3,418.92	829.46	1,604.64	1,806.34	0.00	0.00	0.00
4,700.00	73.78	62.66	3,446.85	873.56	1,689.93	1,902.36	0.00	0.00	0.00
4,800.00	73.78	62.66	3,474.78	917.65	1,775.23	1,998.38	0.00	0.00	0.00
4,900.00	73.78	62.66	3,502.72	961.74	1,860.53	2,094.40	0.00	0.00	0.00
5,000.00	73.78	62.66	3,530.65	1,005.83	1,945.83	2,190.42	0.00	0.00	0.00
5,100.00	73.78	62.66	3,558.58	1,049.92	2,031.12	2,286.44	0.00	0.00	0.00
5,200.00	73.78	62.66	3,586.51	1,094.01	2,116.42	2,382.46	0.00	0.00	0.00
TD at 5248.28 - PBHL - ILES MOUNTAIN 1-36									
5,248.28	73.78	62.66	3,600.00	1,115.30	2,157.60	2,428.81	0.00	0.00	0.00

Design Targets									
Target Name	Dip Angle (°)	Dip Dir. (°)	TVD (ft)	+N/-S (ft)	+E/-W (ft)	Northing (usft)	Easting (usft)	Latitude	Longitude
- hit/miss target									
- Shape									
PBHL - ILES MOUNTAIN	0.00	0.00	3,600.00	1,115.30	2,157.60	1,374,940.26	2,398,378.47	40° 20' 33.041 N	107° 39' 30.685 W
- plan hits target center									
- Point									

Plan Annotations				
Measured Depth (ft)	Vertical Depth (ft)	Local Coordinates		Comment
		+N/-S (ft)	+E/-W (ft)	
2,279.11	2,279.11	0.00	0.00	Start Build 7.00
3,333.11	3,065.04	270.87	524.01	Start 125.16 hold at 3333.11 MD
3,458.27	3,100.00	326.06	630.77	Start 1790.00 hold at 3458.27 MD
5,248.28	3,600.00	1,115.30	2,157.60	TD at 5248.28