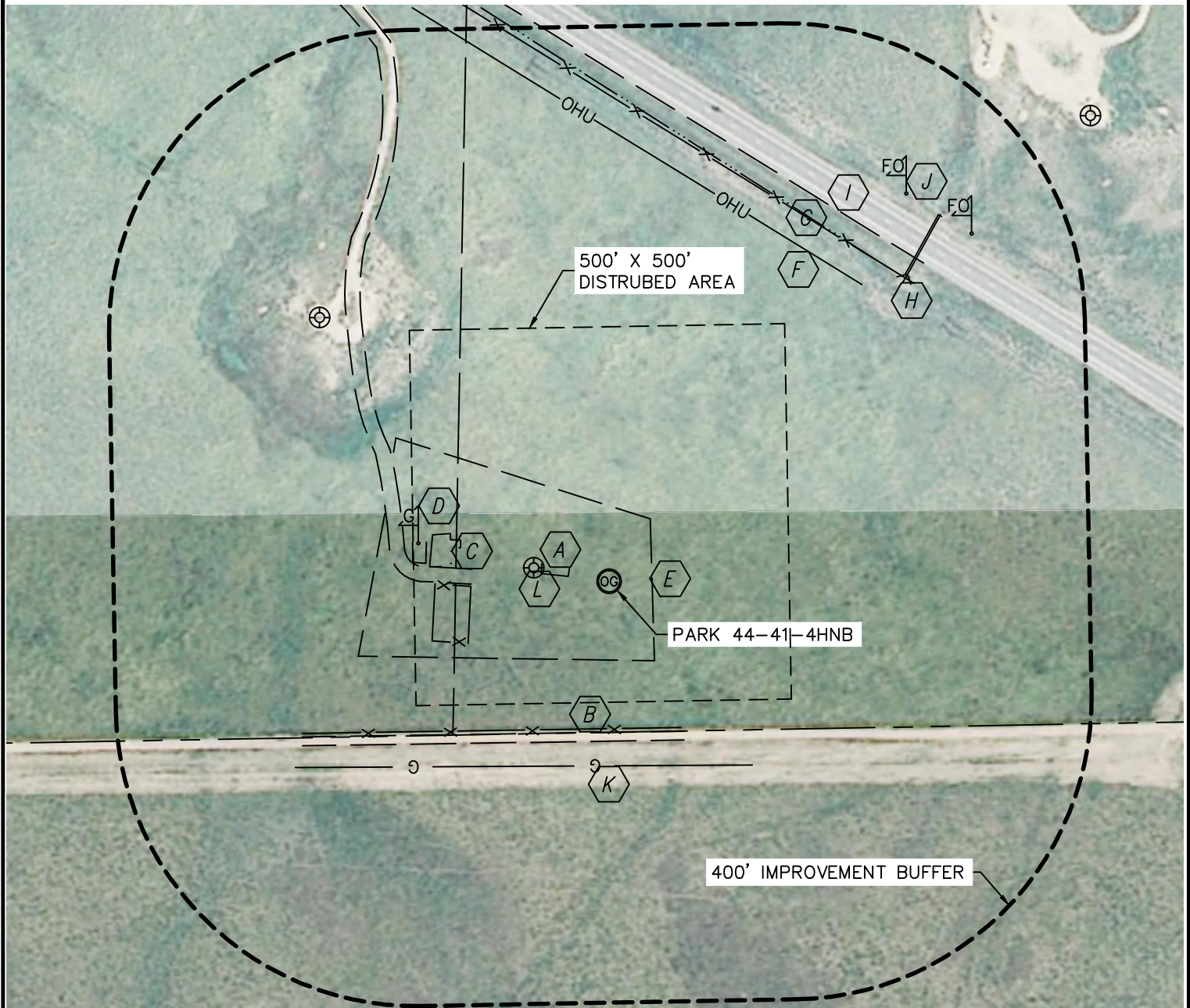


LOCATION DRAWING

PARK T-4 PAD

SECTION: 4
TOWNSHIP: 4N
RANGE: 63W



IMPROVEMENTS:

(DISTANCES MEASURED FROM PROPOSED PARK 44-41-4HNB)

- | | |
|--|--|
| A FENCE 55' W, 196' S, 551' NE | G DITCH 552' NE |
| B FIELD ROAD 183' W, 201' S | H CONCRETE DRAINAGE STRUCTURE 568' NE |
| C EXISTING FACILITY 203' W, 184' W | I HWY 34 581' NE |
| D GAS MARKER 259' W | J FIBER OPTIC MARKER 651', 669' NE |
| E EDGE OF GRAVEL 57' E, 96' N, 105' S | K UNDERGROUND GAS LINE 246' S |
| F OVERHEAD UTILITY LINE 513' NE | L EXISTING GAS WELL 102' W, 522' NW |

NEAREST: BUILDING 1347' W, PUBLIC ROAD 581' NE (HWY 34),
ABOVE GROUND UTILITY 513' NE, RAILROAD 5280'+, PROPERTY LINE 201' S

