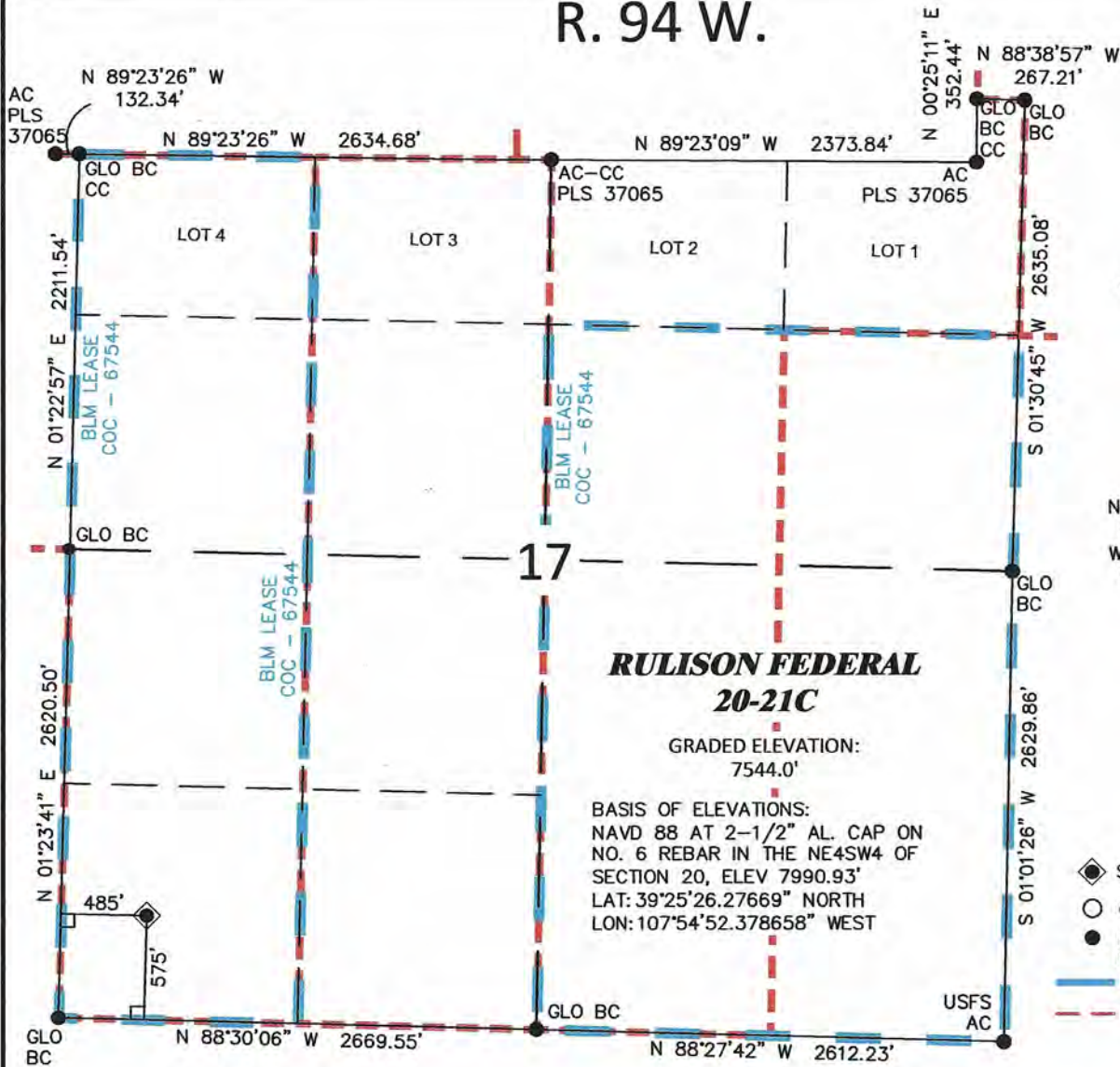


R. 94 W.



SCALE: 1"=1000'
0' 250' 500' 1000'

T. 7 S.

SURFACE HOLE LOCATION

SHL LATITUDE(NAD 83)
NORTH 39.433316 DEG.
SHL LONGITUDE(NAD 83)
WEST 107.917757 DEG.
SHL COLORADO CENTRAL
ZONE (NAD83)
NORTHING
1591801.91 FT.
EASTING
2317180.89 FT.

LEGEND

- ◆ SURFACE HOLE LOCATION
- CALCULATED CORNER
- FOUND CORNER MONUMENT, AS NOTED
- LEASE LINE
- - - PROPERTY LINE

**RULISON FEDERAL
20-21C**

GRADED ELEVATION:
7544.0'

BASIS OF ELEVATIONS:
NAVD 88 AT 2-1/2" AL. CAP ON
NO. 6 REBAR IN THE NE4SW4 OF
SECTION 20, ELEV 7990.93'
LAT: 39°25'26.27669" NORTH
LON: 107°54'52.378658" WEST

SURVEYOR'S STATEMENT

I, Ronald C. Rennke, an employee and agent for William H. Smith & Associates P.C., Inc. state the plat hereon is a representation of a field survey made under my authority of the shown RULISON FEDERAL 20-21C surface hole location, being staked on the ground as shown hereon on June 18, 2012.

NOTES

- (1.) Basis of Datum is the Colorado State Plane Coordinate System, Central Zone, NAD83 (horizontal) & NAVD88 (vertical) derived from OPUS solution.
- (2.) The Basis of Bearings for this survey is referenced to the south line of the SW4 of Section 17 monumented with USGLO brass caps dated 1911 and bearing N 88°30'06" W.
- (3.) Current land use is native, non-crop & rangeland.
- (4.) Improvements exist within 400' radius, see exhibit 2 for details.
- (5.) GPS operator Ron Rennke, observed PDOP 1.6
- (6.) All GPS observations for the shown well location are in compliance with COGCC rule no. 215.



Notice: In accordance with Colorado State Law, any legal action based upon any defect in this survey plat must commence within three (3) years after first discovery of such defect. In no event may any action based upon any defect in this survey plat be commenced more than ten (10) years from the date of certification shown hereon.



WILLIAM H. SMITH & ASSOCIATES P.C.
SURVEYING CONSULTANTS

550 EAST SECOND NORTH PHONE: 307-875-3638
GREEN RIVER, WY 307-875-3639

www.whsmithpc.com

**PLAT OF DRILLING LOCATION
FOR NOBLE ENERGY, INC
RULISON FEDERAL 20-21C - SW4SW4 SECTION 17**

575' F/SL & 485' F/WL, SECTION 17

T. 7 S., R. 94 W., 6TH P.M.

GARFIELD COUNTY, COLORADO

JOB NO: 2011900.004

DATE DRAWN - BY: 6/18/12 - rcr

REVISIONS:

SCALE: 1" = 1000'

EXHIBIT 1

PAGE 1 OF 1

