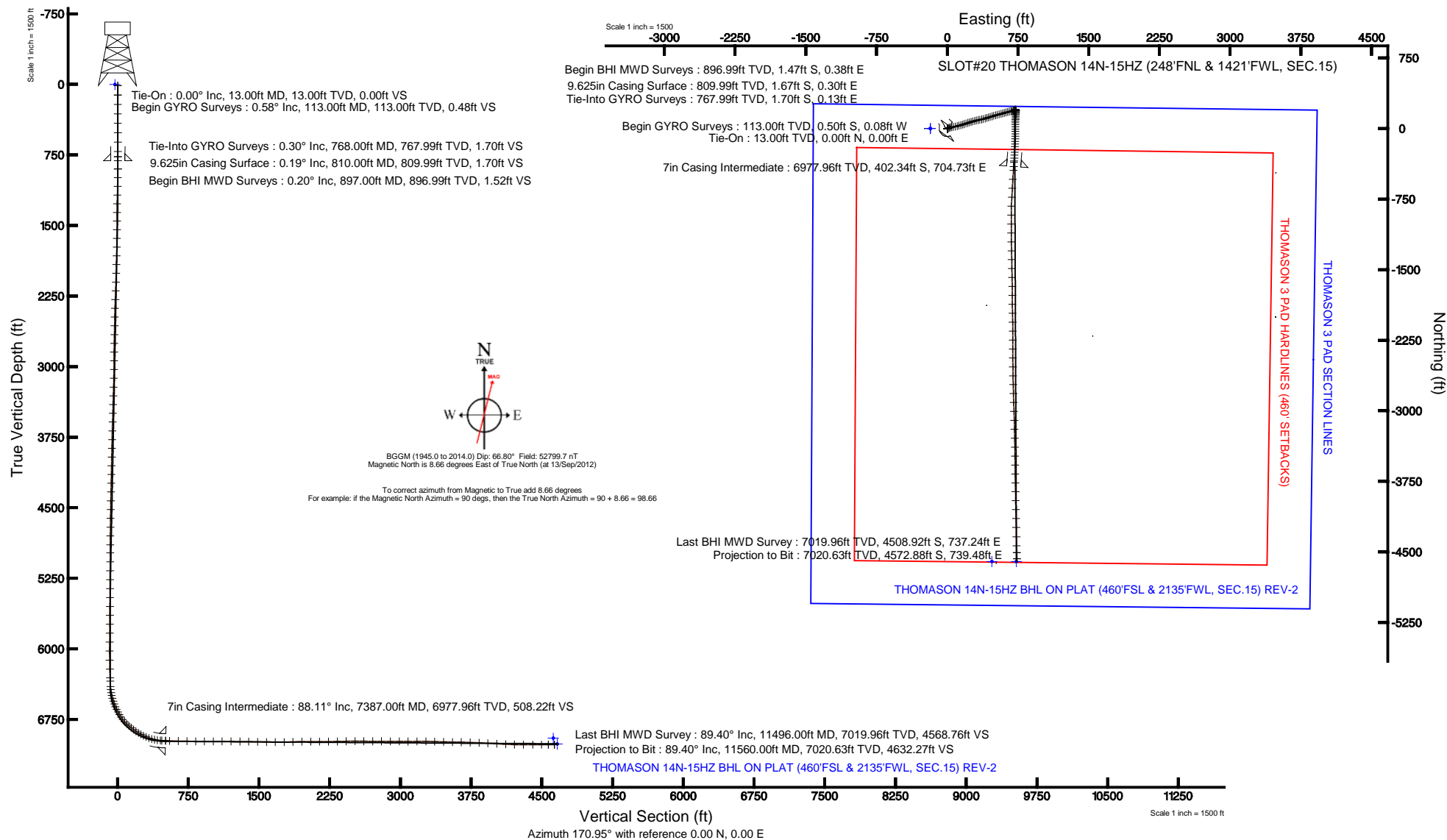


Location:	COLORADO	Slot:	SLOT#20 THOMASON 14N-15HZ (248'FNL & 1421'FWL, SEC.15)
Field:	WELD COUNTY (KERR MCGEE)	Well:	THOMASON 14N-15HZ
Facility:	SEC.15-T2N-R65W	Wellbore:	THOMASON 14N-15HZ PWB

True vertical depths are referenced to ENSIGN 138 (RKB)	Grid System: NAD83 / Lambert Colorado SP, Northern Zone (501), US feet
Measured depths are referenced to ENSIGN 138 (RKB)	North Reference: True north
ENSGN 138 (RKB) to Mean Sea Level: 4876 feet	Scale: True distance
Mean Sea Level to Mud line (At Slot: SLOT#20 THOMASON 14N-15H2 (248'FNL & 1421'FWL, SEC.15)): 0 feet	Depths are in feet
Coordinates are in feet referenced to Slot	Created by: augunora on 07/Nov/2012





Actual Wellpath Report

THOMASON 14N-15HZ AWP

Page 1 of 7



REFERENCE WELLPATH IDENTIFICATION

Operator	KERR-MCGEE OIL & GAS ONSHORE LP	Slot	SLOT#20 THOMASON 14N-15HZ (248'FNL & 1421'FWL, SEC.15)
Area	COLORADO	Well	THOMASON 14N-15HZ
Field	WELD COUNTY (KERR MCGEE)	Wellbore	THOMASON 14N-15HZ AWB
Facility	SEC.15-T2N-R65W		

REPORT SETUP INFORMATION

Projection System	NAD83 / Lambert Colorado SP, Northern Zone (501), US feet	Software System	WellArchitect® 3.0.0
North Reference	True	User	Augunora
Scale	0.999959	Report Generated	07/Nov/2012 at 13:29
Convergence at slot	0.55° East	Database/Source file	WA_ANADARKO/THOMASON_14N-15HZ_AWB.xml

WELLPATH LOCATION

	Local coordinates		Grid coordinates		Geographic coordinates	
	North[ft]	East[ft]	Easting[US ft]	Northing[US ft]	Latitude	Longitude
Slot Location	1009.33	-2531.96	3236343.00	1296899.38	40°08'43.045"N	104°39'16.440"W
Facility Reference Pt			3238884.46	1295914.54	40°08'33.072"N	104°38'43.836"W
Field Reference Pt			3197771.84	1268891.29	40°04'09.600"N	104°47'36.000"W

WELLPATH DATUM

Calculation method	Minimum curvature	ENSIGN 138 (RKB) to Facility Vertical Datum
Horizontal Reference Pt	Slot	ENSIGN 138 (RKB) to Mean Sea Level
Vertical Reference Pt	ENSIGN 138 (RKB)	ENSIGN 138 (RKB) to Mud Line at Slot (SLOT#20 THOMASON 14N-15HZ (248'FNL & 1421'FWL, SEC.15))
MD Reference Pt	ENSIGN 138 (RKB)	Section Origin
Field Vertical Reference	Mean Sea Level	Section Azimuth



Actual Wellpath Report

THOMASON 14N-15HZ AWP

Page 2 of 7



REFERENCE WELLPATH IDENTIFICATION

Operator	KERR-MCGEE OIL & GAS ONSHORE LP	Slot	SLOT#20 THOMASON 14N-15HZ (248'FNL & 1421'FWL, SEC.15)
Area	COLORADO	Well	THOMASON 14N-15HZ
Field	WELD COUNTY (KERR MCGEE)	Wellbore	THOMASON 14N-15HZ AWB
Facility	SEC.15-T2N-R65W		

WELLPATH DATA (145 stations) † = interpolated/extrapolated station

MD [ft]	Inclination [°]	Azimuth [°]	TVD [ft]	Vert Sect [ft]	North [ft]	East [ft]	Latitude	Longitude	DLS [°/100ft]	Comments
0.00†	0.000	189.490	0.00	0.00	0.00	0.00	40°08'43.045"N	104°39'16.440"W	0.00	
13.00	0.000	189.490	13.00	0.00	0.00	0.00	40°08'43.045"N	104°39'16.440"W	0.00	Tie-On
113.00	0.580	189.490	113.00	0.48	-0.50	-0.08	40°08'43.040"N	104°39'16.441"W	0.58	Begin GYRO Surveys
213.00	0.290	147.870	213.00	1.19	-1.21	-0.03	40°08'43.033"N	104°39'16.440"W	0.41	
313.00	0.160	330.900	313.00	1.29	-1.31	0.03	40°08'43.032"N	104°39'16.440"W	0.45	
413.00	0.270	164.430	412.99	1.40	-1.41	0.03	40°08'43.031"N	104°39'16.440"W	0.43	
513.00	0.080	332.250	512.99	1.56	-1.58	0.06	40°08'43.029"N	104°39'16.439"W	0.35	
613.00	0.220	168.660	612.99	1.69	-1.70	0.07	40°08'43.028"N	104°39'16.439"W	0.30	
713.00	0.160	325.740	712.99	1.76	-1.77	0.02	40°08'43.027"N	104°39'16.440"W	0.37	
768.00	0.300	86.890	767.99	1.70	-1.70	0.13	40°08'43.028"N	104°39'16.438"W	0.74	Tie-Into GYRO Surveys
897.00	0.200	339.400	896.99	1.52	-1.47	0.38	40°08'43.030"N	104°39'16.435"W	0.32	Begin BHI MWD Surveys
990.00	1.700	57.800	989.98	0.82	-0.59	1.49	40°08'43.039"N	104°39'16.421"W	1.80	
1083.00	3.600	55.700	1082.88	-0.96	1.79	5.07	40°08'43.063"N	104°39'16.375"W	2.05	
1176.00	5.700	61.300	1175.56	-3.74	5.66	11.54	40°08'43.101"N	104°39'16.291"W	2.31	
1269.00	7.100	69.800	1267.98	-6.38	9.86	20.98	40°08'43.142"N	104°39'16.170"W	1.81	
1362.00	8.700	76.900	1360.10	-7.96	13.44	33.23	40°08'43.178"N	104°39'16.012"W	2.01	
1455.00	10.600	84.100	1451.78	-7.95	15.91	48.59	40°08'43.202"N	104°39'15.814"W	2.42	
1548.00	11.800	79.300	1543.01	-7.71	18.56	66.44	40°08'43.228"N	104°39'15.584"W	1.63	
1643.00	12.200	77.700	1635.94	-8.52	22.50	85.79	40°08'43.267"N	104°39'15.335"W	0.55	
1738.00	11.700	78.100	1728.88	-9.52	26.62	105.03	40°08'43.308"N	104°39'15.088"W	0.53	
1833.00	11.300	72.800	1821.97	-11.27	31.36	123.35	40°08'43.355"N	104°39'14.852"W	1.19	
1928.00	12.300	73.800	1914.97	-13.80	36.94	141.95	40°08'43.410"N	104°39'14.612"W	1.07	
2023.00	11.400	72.000	2007.94	-16.48	42.66	160.60	40°08'43.467"N	104°39'14.372"W	1.02	
2118.00	11.900	74.200	2100.98	-19.05	48.23	178.95	40°08'43.522"N	104°39'14.136"W	0.70	
2213.00	12.300	69.800	2193.87	-22.11	54.39	197.88	40°08'43.583"N	104°39'13.892"W	1.06	
2308.00	11.800	73.200	2286.78	-25.33	60.69	216.67	40°08'43.645"N	104°39'13.650"W	0.91	
2403.00	11.800	71.100	2379.77	-28.25	66.65	235.16	40°08'43.704"N	104°39'13.412"W	0.45	
2498.00	11.400	76.200	2472.84	-30.65	72.03	253.47	40°08'43.757"N	104°39'13.176"W	1.16	
2593.00	11.100	74.800	2566.01	-32.36	76.67	271.41	40°08'43.803"N	104°39'12.945"W	0.43	
2688.00	11.500	74.100	2659.17	-34.43	81.66	289.34	40°08'43.852"N	104°39'12.714"W	0.45	
2783.00	12.100	77.100	2752.16	-36.18	86.48	308.16	40°08'43.900"N	104°39'12.472"W	0.90	
2878.00	11.400	77.000	2845.17	-37.45	90.82	327.01	40°08'43.942"N	104°39'12.229"W	0.74	
2973.00	12.300	79.500	2938.15	-38.31	94.77	346.11	40°08'43.982"N	104°39'11.983"W	1.09	
3068.00	11.300	78.300	3031.14	-38.95	98.50	365.17	40°08'44.018"N	104°39'11.738"W	1.08	
3163.00	11.500	74.600	3124.26	-40.38	102.91	383.42	40°08'44.062"N	104°39'11.503"W	0.80	
3258.00	11.700	72.500	3217.32	-42.80	108.32	401.74	40°08'44.115"N	104°39'11.267"W	0.49	
3353.00	12.000	73.000	3310.30	-45.53	114.10	420.37	40°08'44.173"N	104°39'11.027"W	0.33	
3448.00	10.700	73.500	3403.44	-48.00	119.49	438.27	40°08'44.226"N	104°39'10.796"W	1.37	
3543.00	12.000	73.400	3496.58	-50.40	124.82	456.19	40°08'44.278"N	104°39'10.566"W	1.37	
3638.00	11.000	70.100	3589.67	-53.35	130.73	474.18	40°08'44.337"N	104°39'10.334"W	1.26	
3733.00	12.600	73.100	3682.66	-56.43	136.82	492.61	40°08'44.397"N	104°39'10.097"W	1.80	
3828.00	12.200	75.100	3775.45	-58.82	142.42	512.23	40°08'44.452"N	104°39'09.844"W	0.62	
3923.00	11.400	76.800	3868.44	-60.48	147.14	531.07	40°08'44.499"N	104°39'09.601"W	0.92	
4018.00	12.200	75.600	3961.43	-62.05	151.78	549.93	40°08'44.545"N	104°39'09.358"W	0.88	
4113.00	12.000	75.400	4054.32	-63.89	156.77	569.21	40°08'44.594"N	104°39'09.110"W	0.22	



Actual Wellpath Report

THOMASON 14N-15HZ AWP

Page 3 of 7



REFERENCE WELLPATH IDENTIFICATION

Operator	KERR-MCGEE OIL & GAS ONSHORE LP	Slot	SLOT#20 THOMASON 14N-15HZ (248'FNL & 1421'FWL, SEC.15)
Area	COLORADO	Well	THOMASON 14N-15HZ
Field	WELD COUNTY (KERR MCGEE)	Wellbore	THOMASON 14N-15HZ AWB
Facility	SEC.15-T2N-R65W		

WELLPATH DATA (145 stations)

MD [ft]	Inclination [°]	Azimuth [°]	TVD [ft]	Vert Sect [ft]	North [ft]	East [ft]	Latitude	Longitude	DLS [°/100ft]	Comments
4207.00	11.500	75.200	4146.35	-65.73	161.63	587.73	40°08'44.642"N	104°39'08.872"W	0.53	
4302.00	10.600	73.300	4239.59	-67.80	166.56	605.25	40°08'44.691"N	104°39'08.646"W	1.02	
4397.00	11.200	74.200	4332.87	-70.01	171.58	622.50	40°08'44.740"N	104°39'08.424"W	0.66	
4492.00	11.200	76.000	4426.07	-71.84	176.32	640.33	40°08'44.787"N	104°39'08.194"W	0.37	
4588.00	10.600	75.900	4520.33	-73.38	180.73	657.94	40°08'44.831"N	104°39'07.968"W	0.63	
4682.00	9.700	77.000	4612.86	-74.65	184.62	674.04	40°08'44.869"N	104°39'07.760"W	0.98	
4777.00	7.600	74.000	4706.78	-75.93	188.15	687.88	40°08'44.904"N	104°39'07.582"W	2.26	
4872.00	6.100	78.500	4801.10	-76.88	190.89	698.87	40°08'44.931"N	104°39'07.441"W	1.68	
4967.00	4.600	79.300	4895.68	-77.18	192.60	707.56	40°08'44.948"N	104°39'07.329"W	1.58	
5052.00	4.100	74.200	4980.43	-77.62	194.06	713.83	40°08'44.963"N	104°39'07.248"W	0.74	
5147.00	1.500	67.000	5075.31	-78.31	195.47	718.24	40°08'44.977"N	104°39'07.191"W	2.76	
5242.00	0.400	302.300	5170.30	-78.82	196.14	719.11	40°08'44.983"N	104°39'07.180"W	1.85	
5337.00	0.500	340.300	5265.30	-79.45	196.70	718.69	40°08'44.989"N	104°39'07.185"W	0.32	
5432.00	0.600	14.600	5360.30	-80.31	197.57	718.67	40°08'44.997"N	104°39'07.186"W	0.36	
5527.00	0.300	13.000	5455.29	-81.00	198.30	718.85	40°08'45.004"N	104°39'07.183"W	0.32	
5622.00	0.300	48.000	5550.29	-81.37	198.71	719.09	40°08'45.009"N	104°39'07.180"W	0.19	
5716.00	0.700	64.000	5644.29	-81.66	199.12	719.79	40°08'45.013"N	104°39'07.171"W	0.45	
5811.00	0.500	46.800	5739.28	-82.06	199.66	720.62	40°08'45.018"N	104°39'07.161"W	0.28	
5906.00	0.700	30.400	5834.28	-82.74	200.45	721.21	40°08'45.026"N	104°39'07.153"W	0.28	
6001.00	0.900	25.500	5929.27	-83.80	201.62	721.83	40°08'45.037"N	104°39'07.145"W	0.22	
6096.00	0.700	86.400	6024.26	-84.36	202.33	722.73	40°08'45.044"N	104°39'07.133"W	0.87	
6192.00	1.000	148.200	6120.25	-83.53	201.65	723.76	40°08'45.038"N	104°39'07.120"W	0.95	
6287.00	1.500	159.400	6215.23	-81.55	199.79	724.63	40°08'45.019"N	104°39'07.109"W	0.58	
6382.00	1.800	145.000	6310.19	-78.99	197.40	725.92	40°08'44.996"N	104°39'07.092"W	0.54	
6415.00	1.700	145.000	6343.17	-78.08	196.57	726.50	40°08'44.987"N	104°39'07.085"W	0.30	
6474.00	3.100	167.000	6402.12	-75.70	194.30	727.36	40°08'44.965"N	104°39'07.074"W	2.80	
6506.00	6.600	180.300	6434.00	-73.02	191.62	727.55	40°08'44.938"N	104°39'07.071"W	11.42	
6538.00	10.100	182.300	6465.66	-68.46	186.98	727.42	40°08'44.893"N	104°39'07.073"W	10.97	
6569.00	13.500	182.000	6496.00	-62.24	180.64	727.19	40°08'44.830"N	104°39'07.076"W	10.97	
6601.00	15.400	182.600	6526.99	-54.42	172.66	726.87	40°08'44.751"N	104°39'07.080"W	5.96	
6633.00	17.300	181.600	6557.69	-45.58	163.66	726.54	40°08'44.662"N	104°39'07.084"W	6.00	
6664.00	20.400	182.000	6587.02	-35.75	153.65	726.22	40°08'44.563"N	104°39'07.088"W	10.01	
6696.00	24.200	183.100	6616.63	-23.87	141.52	725.67	40°08'44.443"N	104°39'07.095"W	11.95	
6727.00	27.800	182.900	6644.48	-10.59	127.96	724.96	40°08'44.309"N	104°39'07.105"W	11.62	
6759.00	29.400	183.100	6672.58	4.39	112.66	724.16	40°08'44.158"N	104°39'07.115"W	5.01	
6790.00	30.800	182.400	6699.40	19.60	97.13	723.42	40°08'44.005"N	104°39'07.125"W	4.66	
6822.00	34.200	181.900	6726.38	36.45	79.95	722.78	40°08'43.835"N	104°39'07.133"W	10.66	
6854.00	37.900	181.000	6752.25	54.96	61.13	722.31	40°08'43.649"N	104°39'07.139"W	11.68	
6885.00	42.100	180.700	6775.99	74.58	41.21	722.01	40°08'43.452"N	104°39'07.143"W	13.56	
6917.00	46.100	180.200	6798.97	96.53	18.95	721.84	40°08'43.232"N	104°39'07.145"W	12.55	
6949.00	50.400	180.200	6820.27	120.08	-4.92	721.76	40°08'42.996"N	104°39'07.146"W	13.44	
6980.00	52.600	179.900	6839.57	144.02	-29.18	721.74	40°08'42.757"N	104°39'07.146"W	7.14	
7012.00	53.700	179.800	6858.76	169.31	-54.79	721.81	40°08'42.503"N	104°39'07.145"W	3.45	
7044.00	56.300	180.600	6877.11	195.17	-81.00	721.71	40°08'42.244"N	104°39'07.147"W	8.38	
7075.00	58.400	181.300	6893.84	220.86	-107.09	721.28	40°08'41.987"N	104°39'07.152"W	7.04	



Actual Wellpath Report

THOMASON 14N-15HZ AWP

Page 4 of 7



REFERENCE WELLPATH IDENTIFICATION

Operator	KERR-MCGEE OIL & GAS ONSHORE LP	Slot	SLOT#20 THOMASON 14N-15HZ (248'FNL & 1421'FWL, SEC.15)
Area	COLORADO	Well	THOMASON 14N-15HZ
Field	WELD COUNTY (KERR MCGEE)	Wellbore	THOMASON 14N-15HZ AWB
Facility	SEC.15-T2N-R65W		

WELLPATH DATA (145 stations) † = interpolated/extrapolated station

MD [ft]	Inclination [°]	Azimuth [°]	TVD [ft]	Vert Sect [ft]	North [ft]	East [ft]	Latitude	Longitude	DLS [°/100ft]	Comments
7107.00	60.100	182.400	6910.20	247.85	-134.58	720.39	40°08'41.715"N	104°39'07.164"W	6.08	
7139.00	63.500	183.200	6925.32	275.43	-162.74	719.01	40°08'41.437"N	104°39'07.181"W	10.85	
7170.00	67.600	183.100	6938.14	303.00	-190.91	717.46	40°08'41.158"N	104°39'07.201"W	13.23	
7202.00	70.900	182.900	6949.48	332.24	-220.79	715.89	40°08'40.863"N	104°39'07.222"W	10.33	
7234.00	74.600	182.200	6958.97	362.16	-251.32	714.53	40°08'40.561"N	104°39'07.239"W	11.75	
7265.00	77.800	183.500	6966.36	391.60	-281.38	713.03	40°08'40.264"N	104°39'07.258"W	11.10	
7297.00	81.900	184.000	6972.00	422.29	-312.81	710.97	40°08'39.954"N	104°39'07.285"W	12.90	
7329.00	85.900	183.800	6975.40	453.28	-344.54	708.81	40°08'39.640"N	104°39'07.313"W	12.52	
7344.00	87.400	184.100	6976.28	467.86	-359.48	707.78	40°08'39.492"N	104°39'07.326"W	10.20	
7387.00†	88.108	184.049	6977.96	509.68	-402.34	704.73	40°08'39.069"N	104°39'07.365"W	1.65	7" Casing
7429.00	88.800	184.000	6979.09	550.55	-444.22	701.78	40°08'38.655"N	104°39'07.403"W	1.65	
7524.00	88.700	183.200	6981.17	643.17	-539.01	695.81	40°08'37.718"N	104°39'07.480"W	0.85	
7619.00	88.900	183.100	6983.16	735.96	-633.85	690.60	40°08'36.781"N	104°39'07.547"W	0.24	
7714.00	89.900	183.700	6984.15	828.67	-728.67	684.96	40°08'35.844"N	104°39'07.620"W	1.23	
7809.00	90.000	182.000	6984.23	921.58	-823.55	680.24	40°08'34.907"N	104°39'07.681"W	1.79	
7904.00	89.900	179.800	6984.32	1015.11	-918.53	678.75	40°08'33.968"N	104°39'07.700"W	2.32	
7999.00	89.500	179.900	6984.81	1108.93	-1013.53	679.00	40°08'33.029"N	104°39'07.697"W	0.43	
8094.00	89.500	180.100	6985.64	1202.70	-1108.53	679.00	40°08'32.090"N	104°39'07.697"W	0.21	
8189.00	89.600	178.700	6986.39	1296.63	-1203.52	679.99	40°08'31.152"N	104°39'07.684"W	1.48	
8284.00	89.000	178.800	6987.55	1390.72	-1298.49	682.06	40°08'30.213"N	104°39'07.658"W	0.64	
8379.00	88.100	178.900	6989.95	1484.75	-1393.44	683.97	40°08'29.275"N	104°39'07.633"W	0.95	
8474.00	89.300	178.900	6992.11	1578.78	-1488.39	685.79	40°08'28.336"N	104°39'07.610"W	1.26	
8569.00	89.700	178.700	6992.94	1672.86	-1583.37	687.78	40°08'27.398"N	104°39'07.584"W	0.47	
8664.00	91.000	179.600	6992.36	1766.85	-1678.35	689.19	40°08'26.459"N	104°39'07.566"W	1.66	
8759.00	92.400	180.200	6989.54	1860.61	-1773.31	689.36	40°08'25.521"N	104°39'07.564"W	1.60	
8854.00	89.500	178.700	6987.96	1954.51	-1868.28	690.27	40°08'24.582"N	104°39'07.552"W	3.44	
8949.00	90.400	179.000	6988.05	2048.58	-1963.26	692.17	40°08'23.644"N	104°39'07.528"W	1.00	
9044.00	90.300	179.100	6987.47	2142.60	-2058.24	693.75	40°08'22.705"N	104°39'07.507"W	0.15	
9139.00	90.300	180.000	6986.97	2236.49	-2153.24	694.50	40°08'21.766"N	104°39'07.498"W	0.95	
9234.00	91.100	179.800	6985.81	2330.29	-2248.23	694.66	40°08'20.828"N	104°39'07.496"W	0.87	
9329.00	91.600	180.700	6983.57	2423.98	-2343.20	694.25	40°08'19.889"N	104°39'07.501"W	1.08	
9424.00	89.600	178.700	6982.58	2517.82	-2438.18	694.75	40°08'18.951"N	104°39'07.495"W	2.98	
9519.00	89.400	179.500	6983.41	2611.83	-2533.17	696.24	40°08'18.012"N	104°39'07.475"W	0.87	
9614.00	90.100	179.400	6983.82	2705.75	-2628.16	697.15	40°08'17.073"N	104°39'07.464"W	0.74	
9708.00	90.100	178.000	6983.66	2798.86	-2722.14	699.28	40°08'16.145"N	104°39'07.436"W	1.49	
9803.00	89.400	178.500	6984.07	2893.06	-2817.09	702.18	40°08'15.206"N	104°39'07.399"W	0.91	
9898.00	89.700	178.200	6984.82	2987.23	-2912.05	704.92	40°08'14.268"N	104°39'07.364"W	0.45	
9993.00	89.000	177.800	6985.89	3081.48	-3006.98	708.23	40°08'13.330"N	104°39'07.321"W	0.85	
10088.00	91.300	178.400	6985.65	3175.71	-3101.92	711.38	40°08'12.391"N	104°39'07.281"W	2.50	
10183.00	89.700	179.600	6984.82	3269.73	-3196.90	713.04	40°08'11.453"N	104°39'07.259"W	2.11	
10278.00	87.500	178.500	6987.14	3363.72	-3291.85	714.61	40°08'10.515"N	104°39'07.239"W	2.59	
10373.00	89.000	178.800	6990.04	3457.78	-3386.78	716.85	40°08'09.576"N	104°39'07.210"W	1.61	
10468.00	89.300	179.500	6991.45	3551.77	-3481.76	718.26	40°08'08.638"N	104°39'07.192"W	0.80	
10563.00	88.200	178.900	6993.52	3645.73	-3576.72	719.59	40°08'07.699"N	104°39'07.175"W	1.32	
10658.00	88.600	180.000	6996.17	3739.61	-3671.68	720.50	40°08'06.761"N	104°39'07.164"W	1.23	



Actual Wellpath Report

THOMASON 14N-15HZ AWP

Page 5 of 7



REFERENCE WELLPATH IDENTIFICATION

Operator	KERR-MCGEE OIL & GAS ONSHORE LP	Slot	SLOT#20 THOMASON 14N-15HZ (248'FNL & 1421'FWL, SEC.15)
Area	COLORADO	Well	THOMASON 14N-15HZ
Field	WELD COUNTY (KERR MCGEE)	Wellbore	THOMASON 14N-15HZ AWB
Facility	SEC.15-T2N-R65W		

WELLPATH DATA (145 stations)

MD [ft]	Inclination [°]	Azimuth [°]	TVD [ft]	Vert Sect [ft]	North [ft]	East [ft]	Latitude	Longitude	DLS [°/100ft]	Comments
10753.00	86.700	178.500	7000.07	3833.50	-3766.58	721.74	40°08'05.823"N	104°39'07.148"W	2.55	
10848.00	86.600	179.100	7005.62	3927.42	-3861.40	723.73	40°08'04.886"N	104°39'07.122"W	0.64	
10943.00	87.400	178.800	7010.59	4021.33	-3956.25	725.46	40°08'03.949"N	104°39'07.100"W	0.90	
11038.00	87.300	179.200	7014.98	4115.26	-4051.14	727.12	40°08'03.011"N	104°39'07.078"W	0.43	
11133.00	88.000	178.400	7018.88	4209.26	-4146.04	729.11	40°08'02.073"N	104°39'07.053"W	1.12	
11228.00	90.500	178.800	7020.12	4303.37	-4240.99	731.43	40°08'01.135"N	104°39'07.023"W	2.67	
11328.00	90.500	178.900	7019.25	4402.38	-4340.97	733.44	40°08'00.147"N	104°39'06.997"W	0.10	
11422.00	89.500	178.900	7019.25	4495.45	-4434.95	735.24	40°07'59.218"N	104°39'06.974"W	1.06	
11496.00	89.400	178.000	7019.96	4568.79	-4508.92	737.24	40°07'58.487"N	104°39'06.948"W	1.22	Last BHI MWD Survey
11560.00	89.400	178.000	7020.63	4632.28	-4572.88	739.48	40°07'57.855"N	104°39'06.920"W	0.00	Projection to Bit

HOLE & CASING SECTIONS - Ref Wellbore: THOMASON 14N-15HZ AWB Ref Wellpath: THOMASON 14N-15HZ AWP

String/Diameter	Start MD [ft]	End MD [ft]	Interval [ft]	Start TVD [ft]	End TVD [ft]	Start N/S [ft]	Start E/W [ft]	End N/S [ft]	End E/W [ft]
13.5in Open Hole	13.00	810.00	797.00	13.00	809.99	0.00	0.00	-1.67	0.30
9.625in Casing Surface	13.00	810.00	797.00	13.00	809.99	0.00	0.00	-1.67	0.30
8.75in Open Hole	810.00	7397.00	6587.00	809.99	6978.28	-1.67	0.30	-412.31	704.02
7in Casing Intermediate	13.00	7387.00	7374.00	13.00	6977.96	0.00	0.00	-402.34	704.73
6.125in Open Hole	7387.00	11560.00	4173.00	6977.96	7020.63	-402.34	704.73	-4572.88	739.48



Actual Wellpath Report

THOMASON 14N-15HZ AWP

Page 6 of 7



REFERENCE WELLPATH IDENTIFICATION

Operator	KERR-MCGEE OIL & GAS ONSHORE LP	Slot	SLOT#20 THOMASON 14N-15HZ (248'FNL & 1421'FWL, SEC.15)
Area	COLORADO	Well	THOMASON 14N-15HZ
Field	WELD COUNTY (KERR MCGEE)	Wellbore	THOMASON 14N-15HZ AWB
Facility	SEC.15-T2N-R65W		

TARGETS

Name	MD [ft]	TVD [ft]	North [ft]	East [ft]	Grid East [US ft]	Grid North [US ft]	Latitude	Longitude	Shape
THOMASON 3 PAD SECTION LINES		0.00	0.81	-180.09	3236162.92	1296898.47	40°08'43.053"N	104°39'18.759"W	polygon
THOMASON 14N-15HZ BHL ON PLAT (460'FSL & 1875'FWL, SEC.15) REV-1		6951.00	-4603.68	473.57	3236860.42	1292300.62	40°07'57.551"N	104°39'10.343"W	point
THOMASON 14N-15HZ BHL ON PLAT (460'FSL & 2135'FWL, SEC.15) REV-2		7013.00	-4604.08	733.62	3237120.45	1292302.70	40°07'57.547"N	104°39'06.995"W	point
THOMASON 3 PAD HARDLINES (460' SETBACKS)		7180.00	0.81	-180.09	3236162.92	1296898.47	40°08'43.053"N	104°39'18.759"W	polygon

WELLPATH COMPOSITION - Ref Wellbore: THOMASON 14N-15HZ AWB Ref Wellpath: THOMASON 14N-15HZ AWP

Start MD [ft]	End MD [ft]	Positional Uncertainty Model	Log Name/Comment	Wellbore
13.00	768.00	Generic gyro - continuous (Standard)	GYRO SURVEYS <113-768>	THOMASON 14N-15HZ AW
768.00	7344.00	NaviTrak (Standard)	BHI MWD SURVEYS 8 3/4" HOLE <897-7344>	THOMASON 14N-15HZ AW
7344.00	11496.00	OnTrak (Standard)	BHI MWD SURVEYS 6 1/8" HOLE <7429-11496>	THOMASON 14N-15HZ AW
11496.00	11560.00	Blind Drilling (std)	Projection to bit	THOMASON 14N-15HZ AW



Actual Wellpath Report

THOMASON 14N-15HZ AWP

Page 7 of 7



REFERENCE WELLPATH IDENTIFICATION

Operator	KERR-MCGEE OIL & GAS ONSHORE LP	Slot	SLOT#20 THOMASON 14N-15HZ (248'FNL & 1421'FWL, SEC.15)
Area	COLORADO	Well	THOMASON 14N-15HZ
Field	WELD COUNTY (KERR MCGEE)	Wellbore	THOMASON 14N-15HZ AWB
Facility	SEC.15-T2N-R65W		

WELLPATH COMMENTS

MD [ft]	Inclination [°]	Azimuth [°]	TVD [ft]	Comment
13.00	0.000	189.490	13.00	Tie-On
113.00	0.580	189.490	113.00	Begin GYRO Surveys
768.00	0.300	86.890	767.99	Tie-Into GYRO Surveys
897.00	0.200	339.400	896.99	Begin BHI MWD Surveys
7387.00	88.108	184.049	6977.96	7" Casing
11496.00	89.400	178.000	7019.96	Last BHI MWD Survey
11560.00	89.400	178.000	7020.63	Projection to Bit