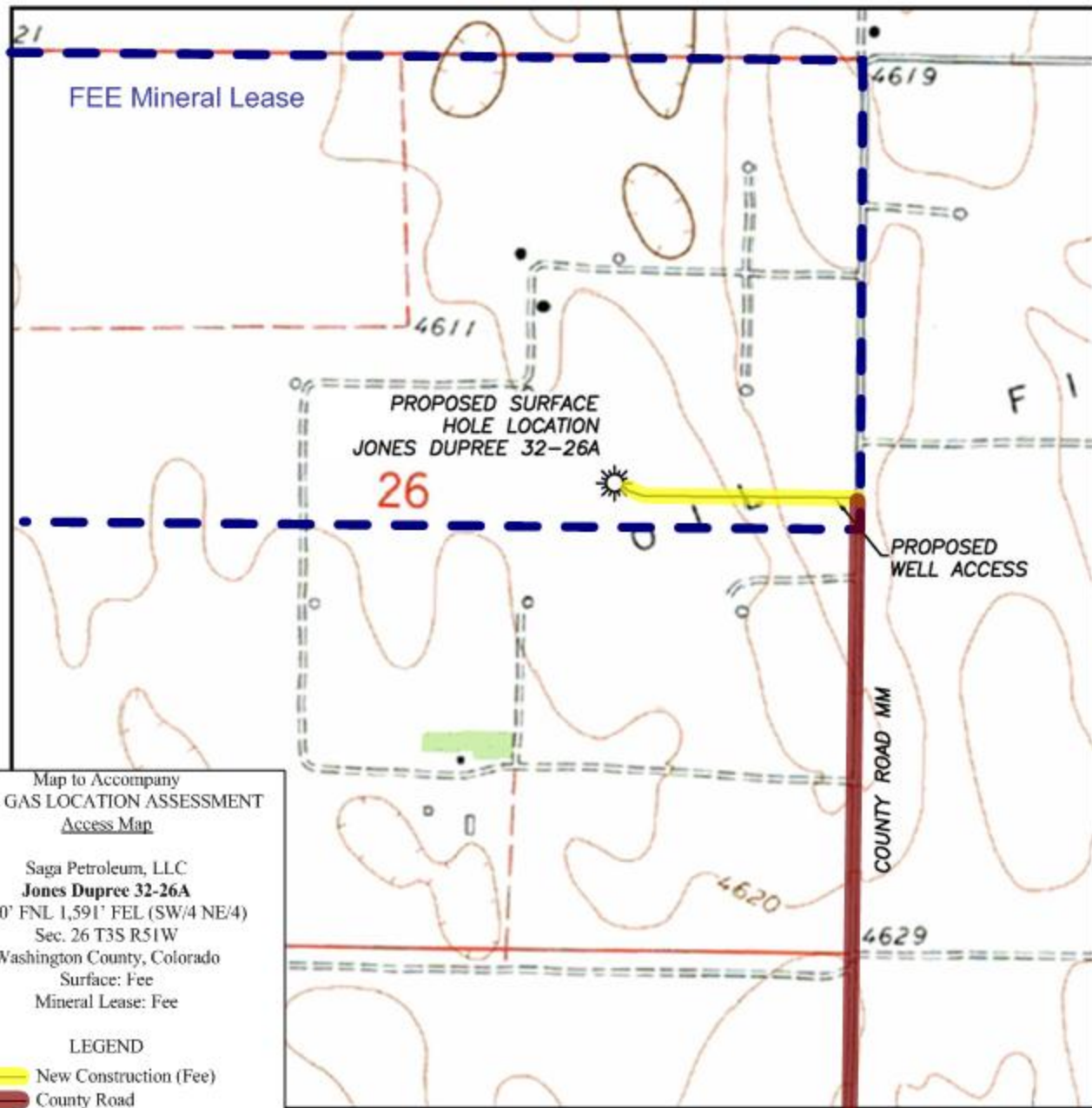


PROPOSED WELL ACCESS
JONES DUPREE 32-26A

SECTION 26, TOWNSHIP 3 SOUTH, RANGE 51 WEST OF THE 6TH PRINCIPAL MERIDIAN



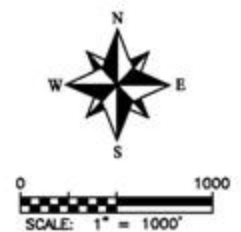
Map to Accompany
OIL & GAS LOCATION ASSESSMENT
Access Map

Saga Petroleum, LLC
Jones Dupree 32-26A
 2,490' FNL 1,591' FEL (SW/4 NE/4)
 Sec. 26 T3S R51W
 Washington County, Colorado
 Surface: Fee
 Mineral Lease: Fee

LEGEND

- New Construction (Fee)
 County Road

Revised by Banko Petroleum Management, Inc.



DALEY LAND SURVEYING, INC.

PARKER, CO. 80134

303 953 9841

AREA ROAD MAP JONES DUPREE 32-26A

SECTION 26, TOWNSHIP 3 SOUTH, RANGE 51 WEST OF THE 6TH PRINCIPAL MERIDIAN

Map to Accompany
OIL & GAS LOCATION ASSESSMENT
Area Map

Saga Petroleum, LLC
Jones Dupree 32-26A
2,490' FNL 1,591' FEL (SW/4 NE/4)
Sec. 26 T3S R51W
Washington County, Colorado
Surface: Fee
Mineral Lease: Fee

LEGEND

- New Construction (Fee)
- County Road
- State Highway 36

Revised by Banko Petroleum Management, Inc.

