

Company Newfield Production  
Well Banta Ridge Fed 5-18-1-103  
Field Banta Ridge  
County Rio Blanco  
State CO

Company Foundation Energy LLC.  
Well Banta Ridge Fed 5-18-1-103  
Field Banta Ridge  
County Rio Blanco State CO

**Location:**

API #: 05-103-11892

Other Services

SHL: 1265' FSL & 619' FWL  
BHL: 1951' FSL & 650' FWL  
SEC 18 TWP 1S RGE 103W

Elevation

Permanent Datum Ground Level Elevation 6064'  
Log Measured From Kelly Bushing 10' Above G.L.  
Drilling Measured From Kelly Bushing

K.B. 6074'  
D.F. 6074'  
G.L. 6064'

Date 10-3-12

Run Number	One		
Depth Driller	4750'		
Depth Logger	4688'		
Bottom Logged Interval	4684'		
Top Log Interval	Surface		
Open Hole Size	7 7/8"		
Type Fluid	Water		
Density / Viscosity	///		
Max. Recorded Temp.	118 Deg F. OH		
Estimated Cement Top	176'		
Time Well Ready	Crane		
Time Logger on Bottom	1:30 P.M.		
Equipment Number	407		
location	Roosevelt		
Recorded By	Reynolds		
Witnessed By	Mr. Tanner Bishop		

Borehole Record				Tubing Record			
Run Number	Bit	From	To	Size	Weight	From	To

Casing Record	Size	Wgt/Ft	Top	Bottom
Surface String	8 5/8"	24#	0	518'
Prot. String				
Production String	4 1/2"	11.6#	0	N/A
Liner				

<<< Fold Here >>>

All interpretations are opinions based on inferences from electrical or other measurements and we cannot and do not guarantee the accuracy or correctness of any interpretation, and we shall not, except in the case of gross or willful negligence on our part, be liable or responsible for any loss, costs, damages, or expenses incurred or sustained by anyone resulting from any interpretation made by any of our officers, agents or employees. These interpretations are also subject to our general terms and conditions set out in our current Price Schedule.

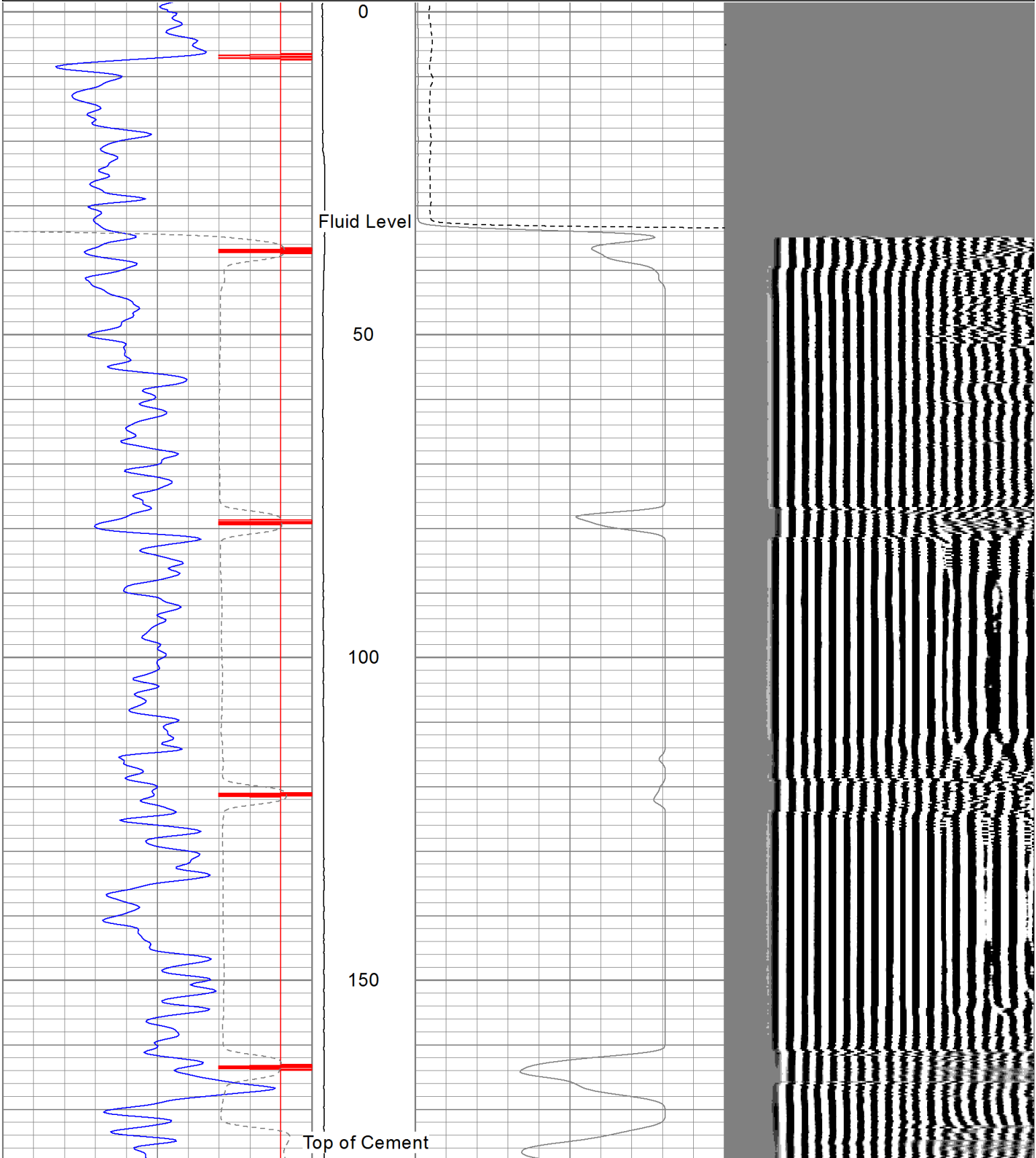
**Comments**

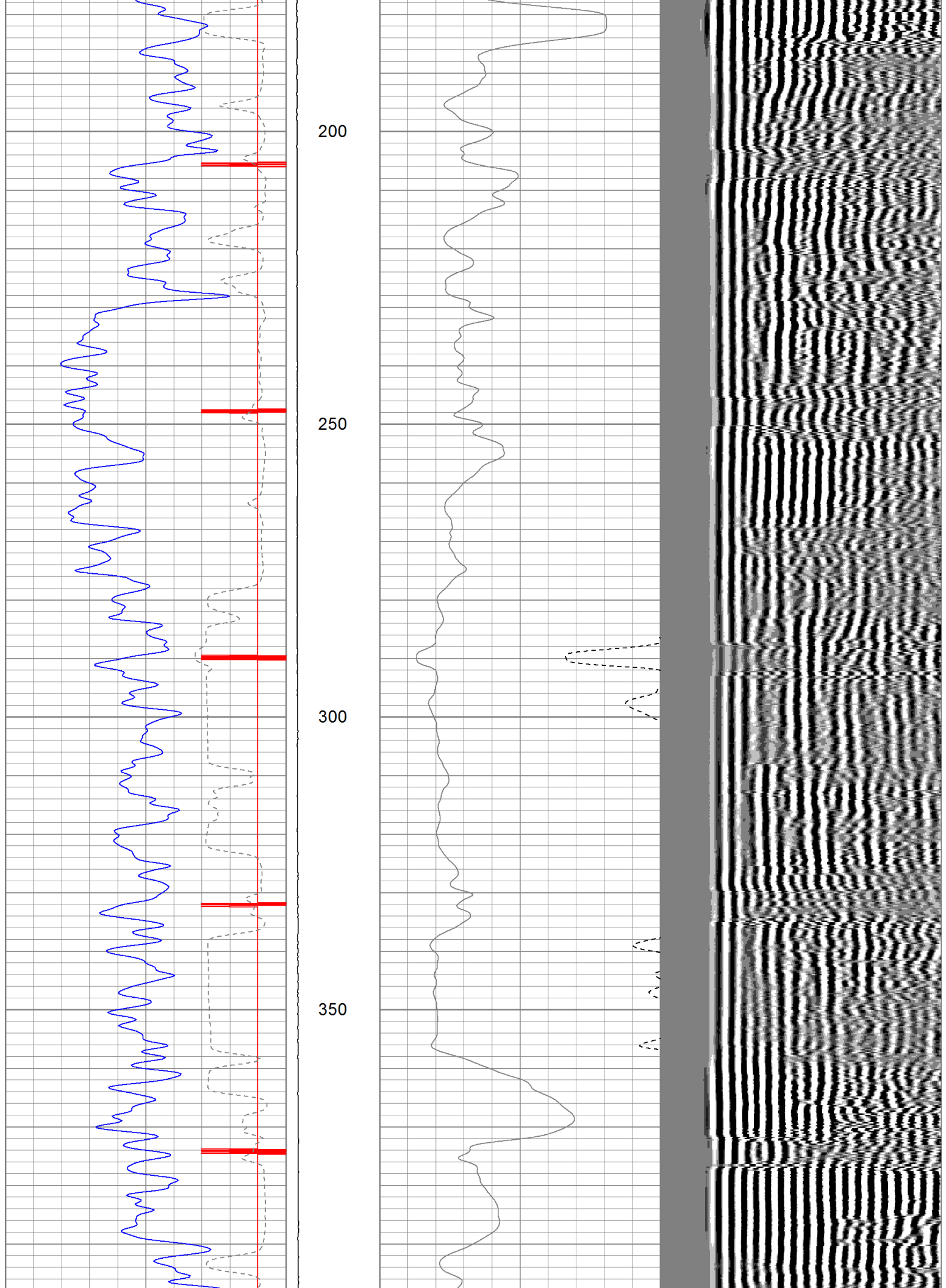
Log Correlated to Halliburton Spectral Density,  
Array Compensated, True Resistivity Log  
Dated: 9-01-12

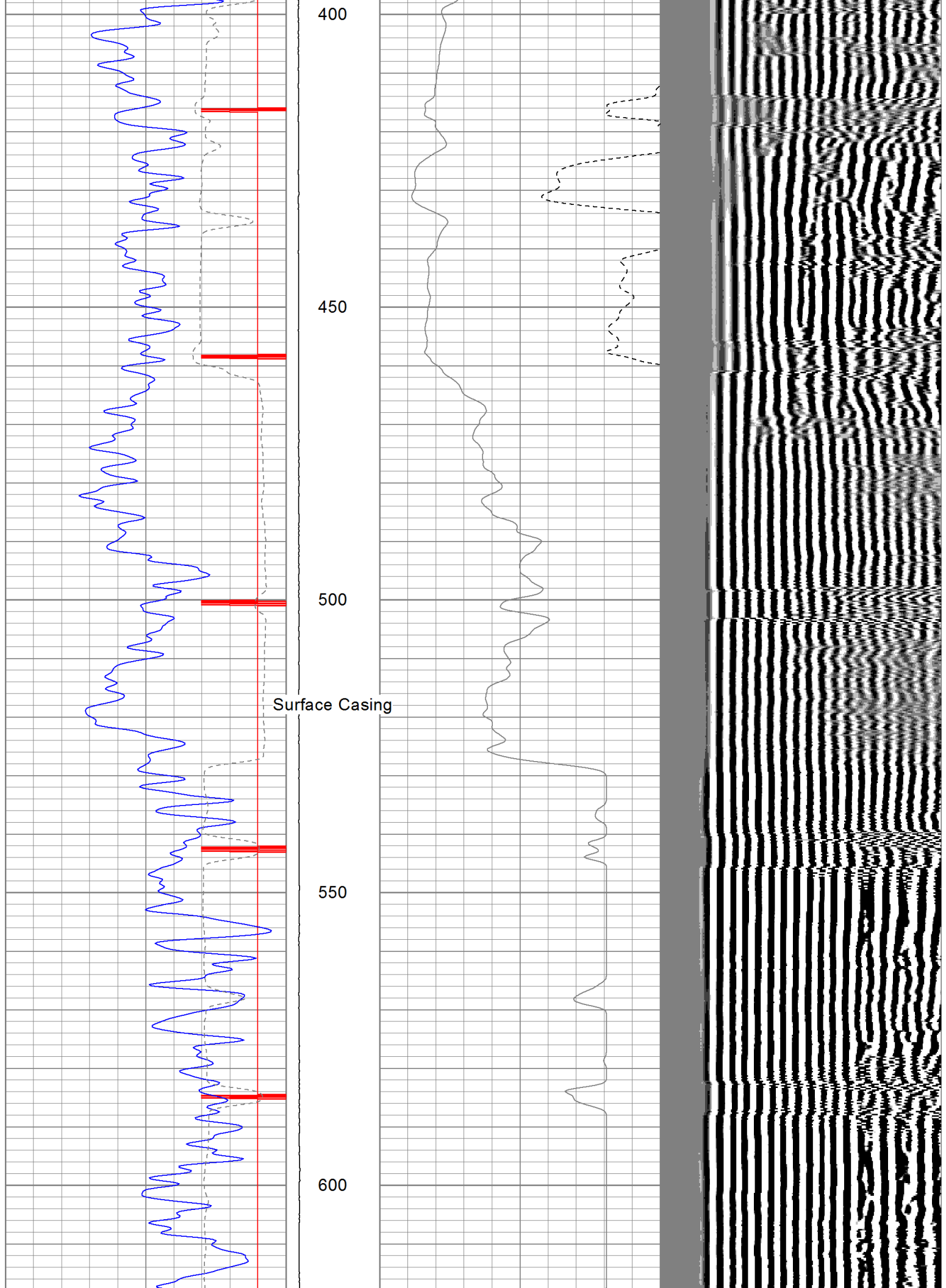
Thank You for using  
The Perforators.

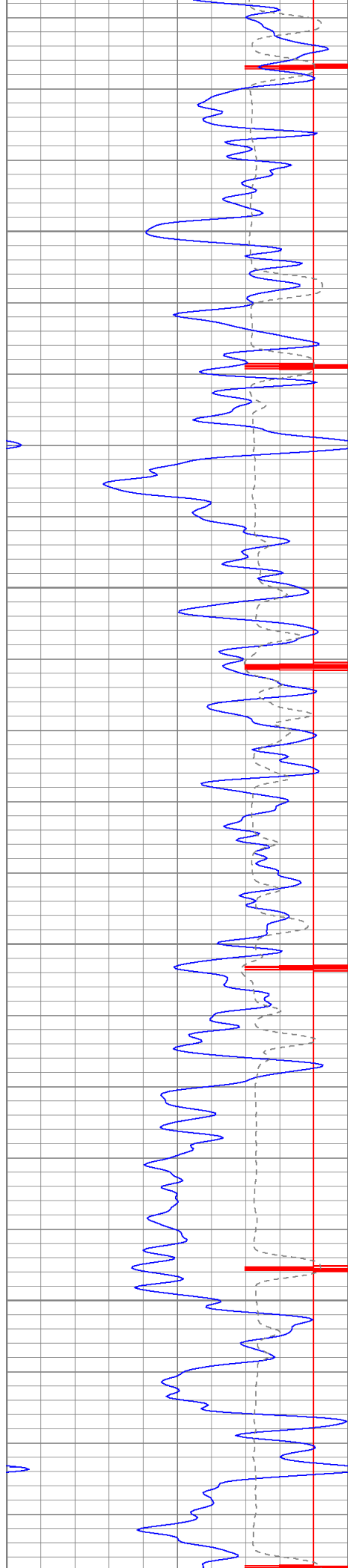
Database File: br fed 5-18-1-103.db  
Dataset Pathname: pass7  
Presentation Format: cbl  
Dataset Creation: Wed Oct 03 14:20:47 2012 by Log Std Casedhole 10081  
Charted by: Depth in Feet scaled 1:240

9	CCL	-1	LTEN	0	AMP3 (mV)	100	200	Variable Density	1200
0	GR (GAPI)	150	(lb)	0	Amplified Amplitude (mV)	20			
430	TT3 (usec)	230	0	2500					







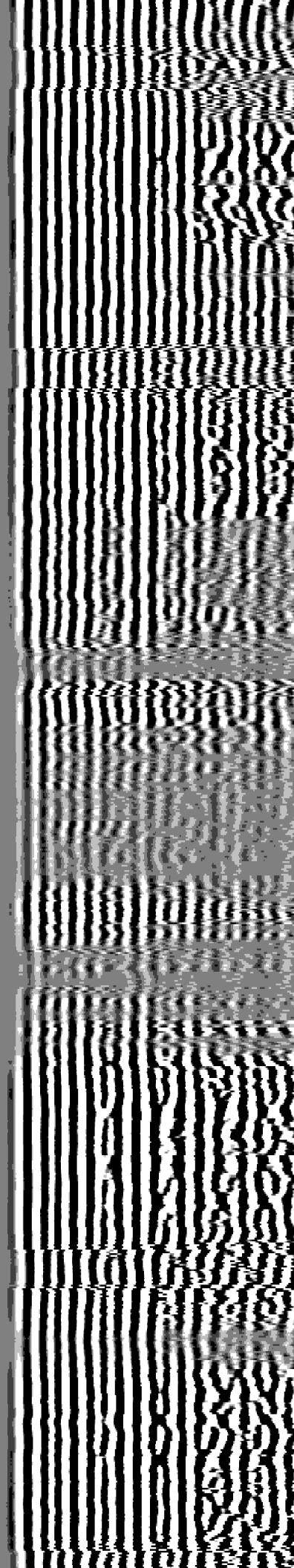
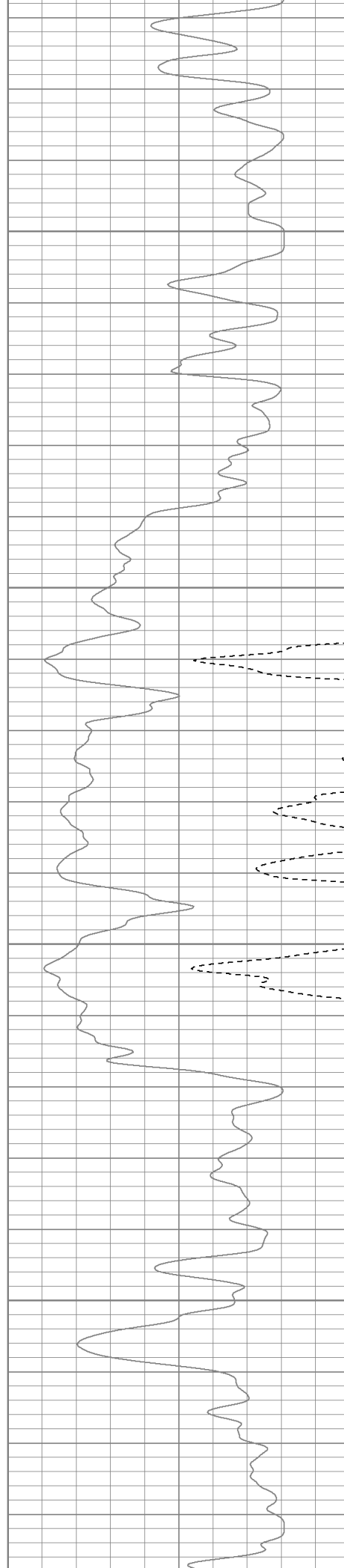


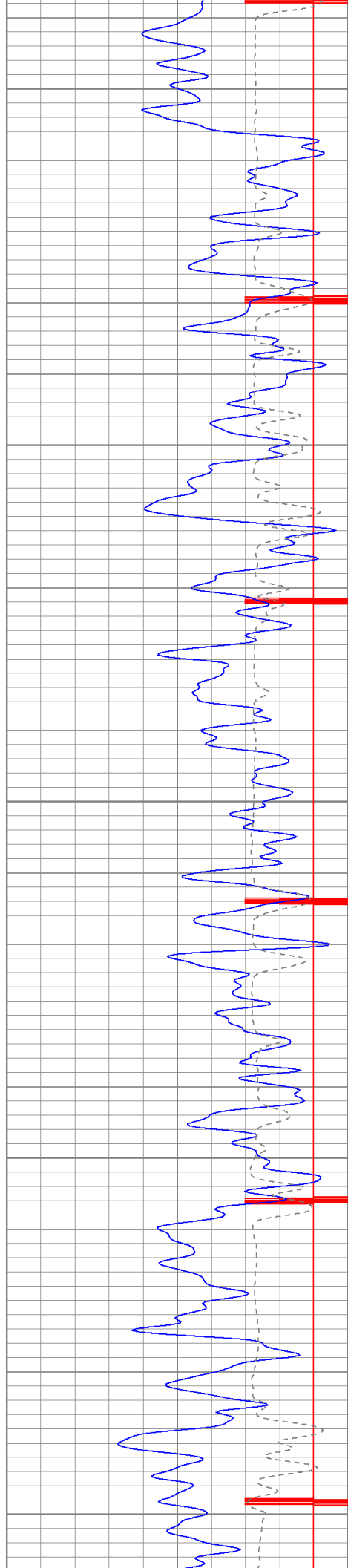
650

700

750

800





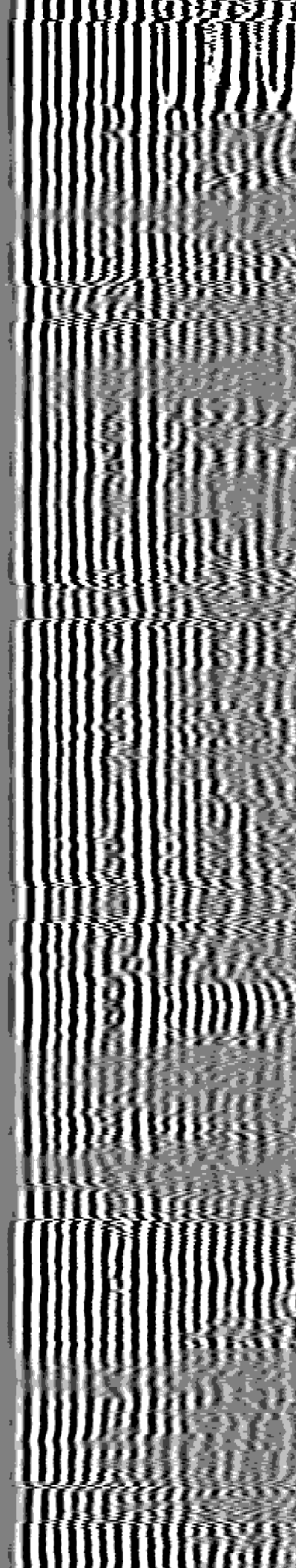
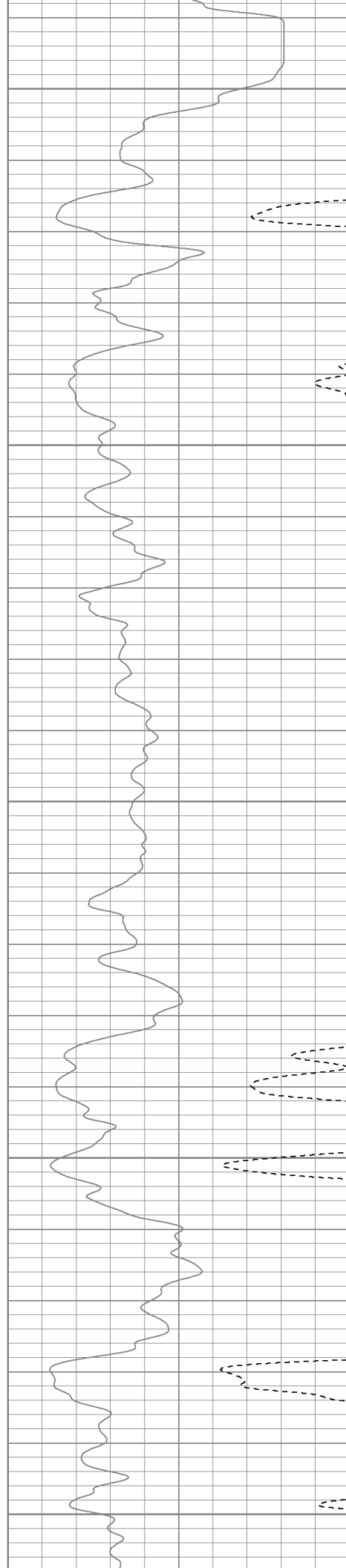
850

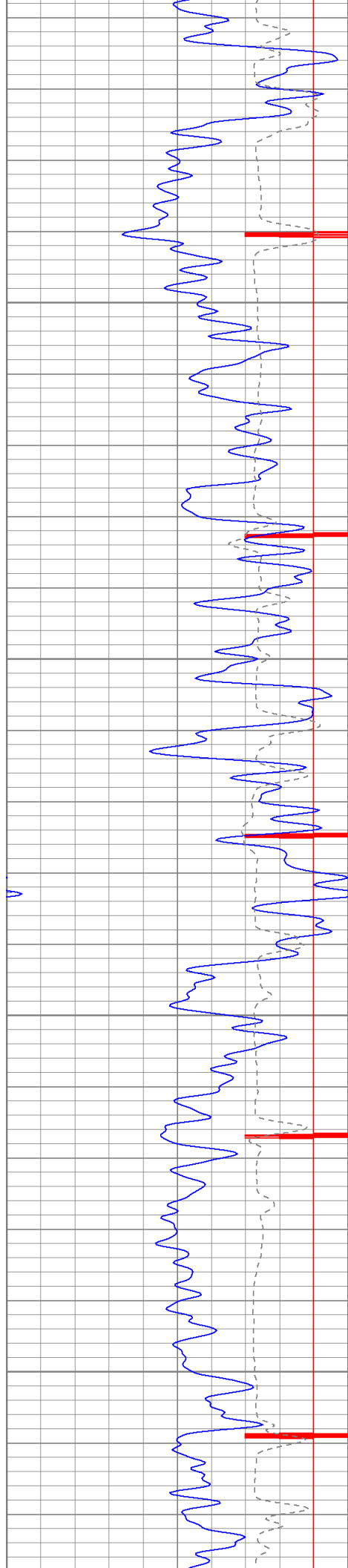
900

950

1000

1050



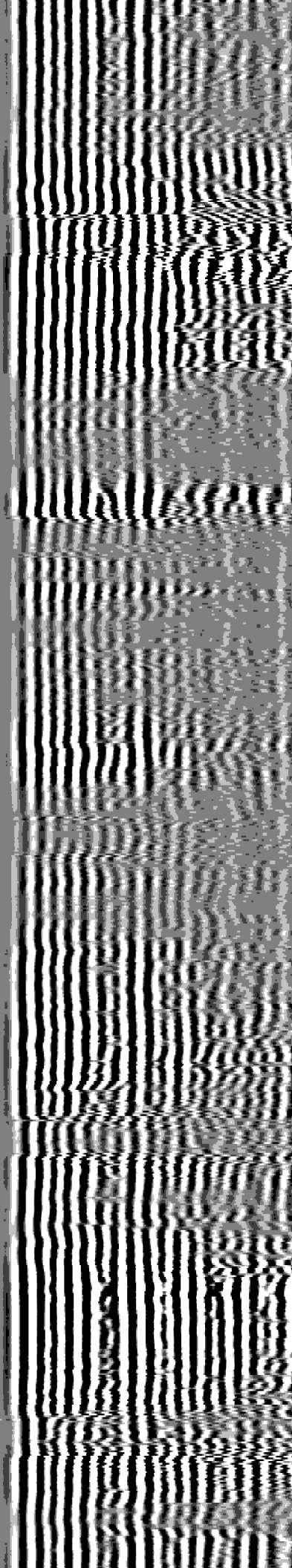
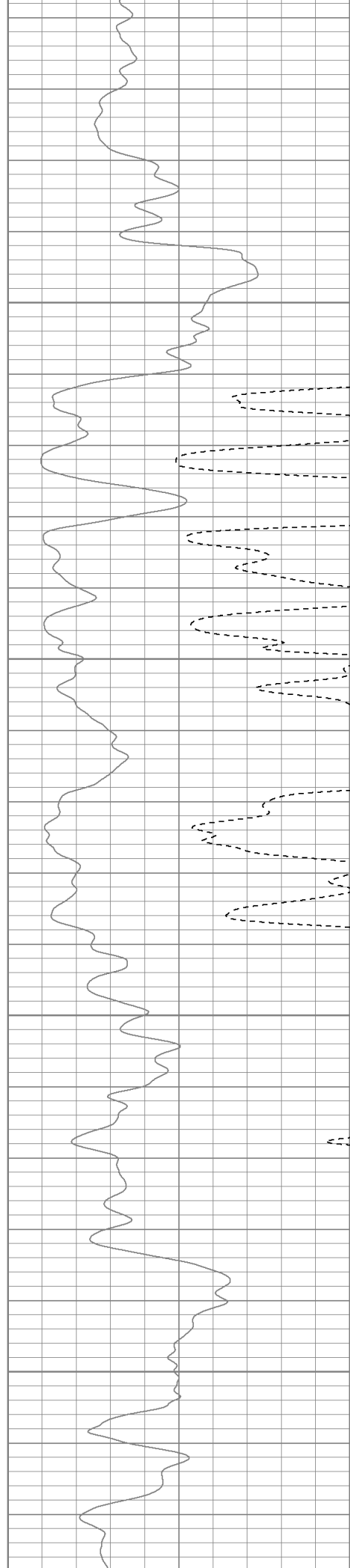


1100

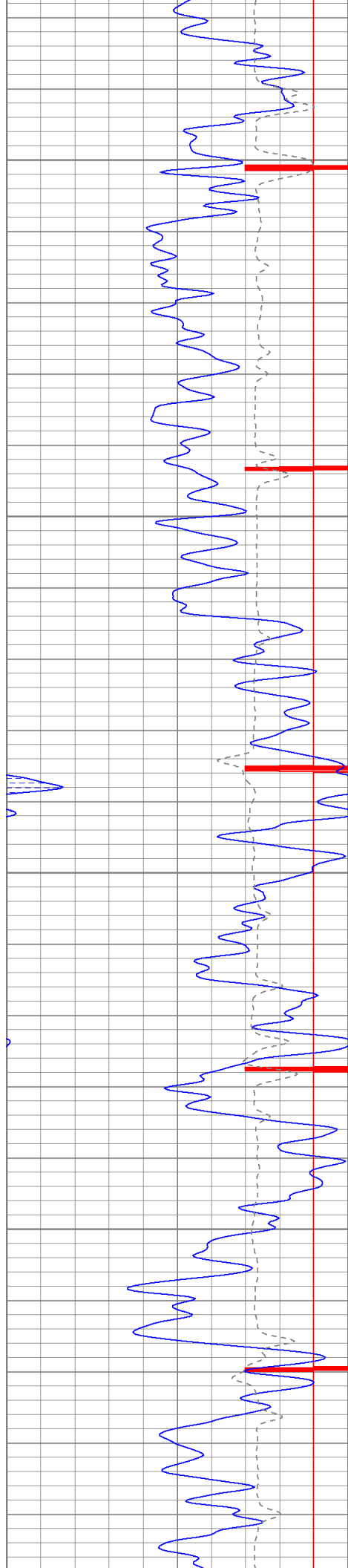
1150

1200

1250





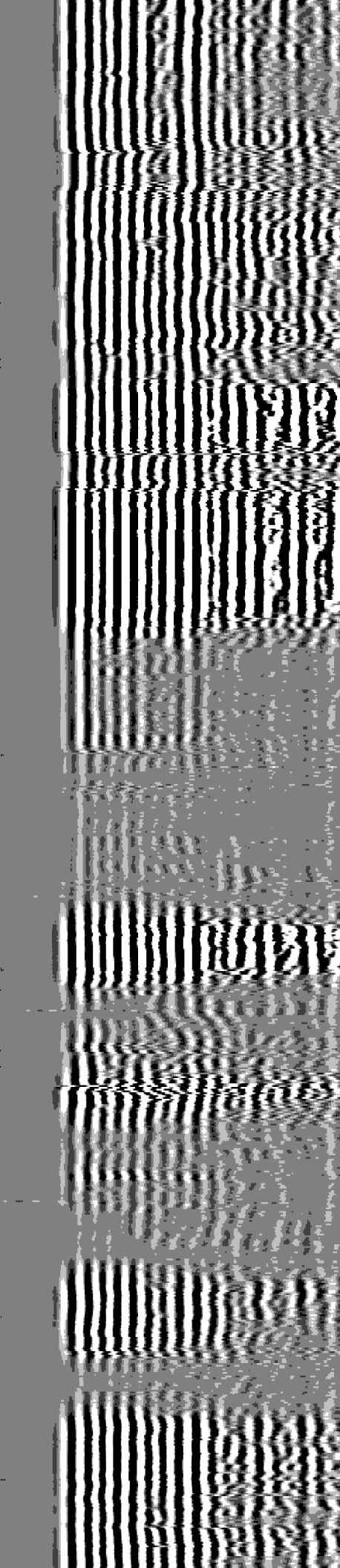
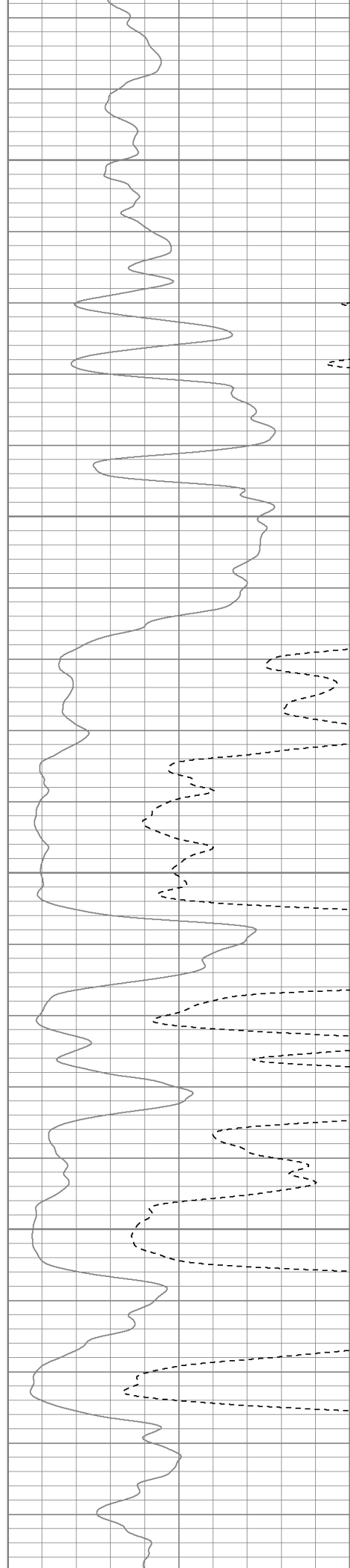


1300

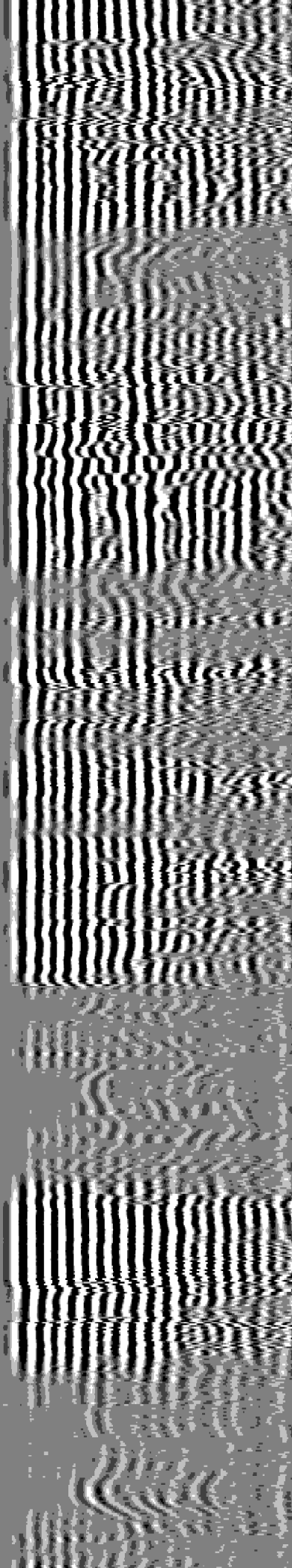
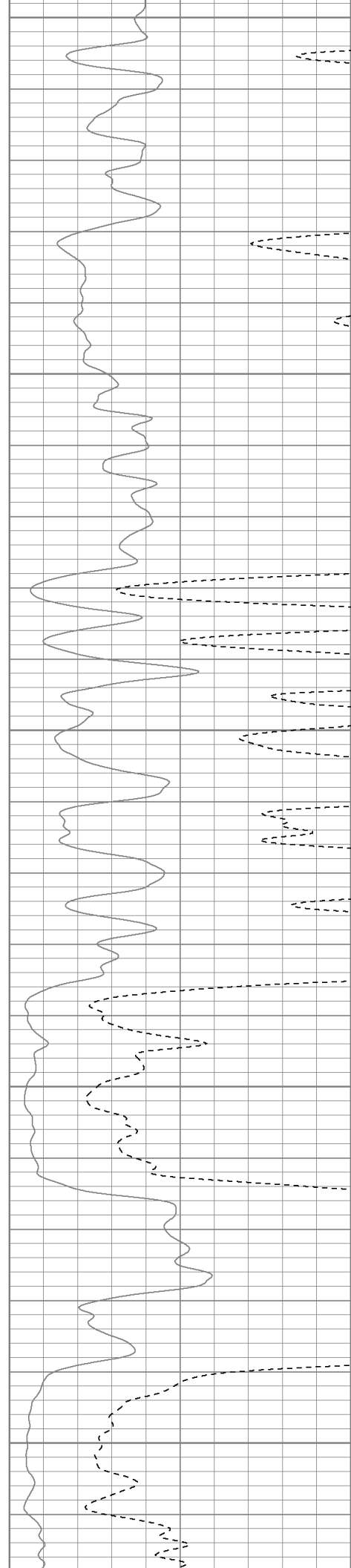
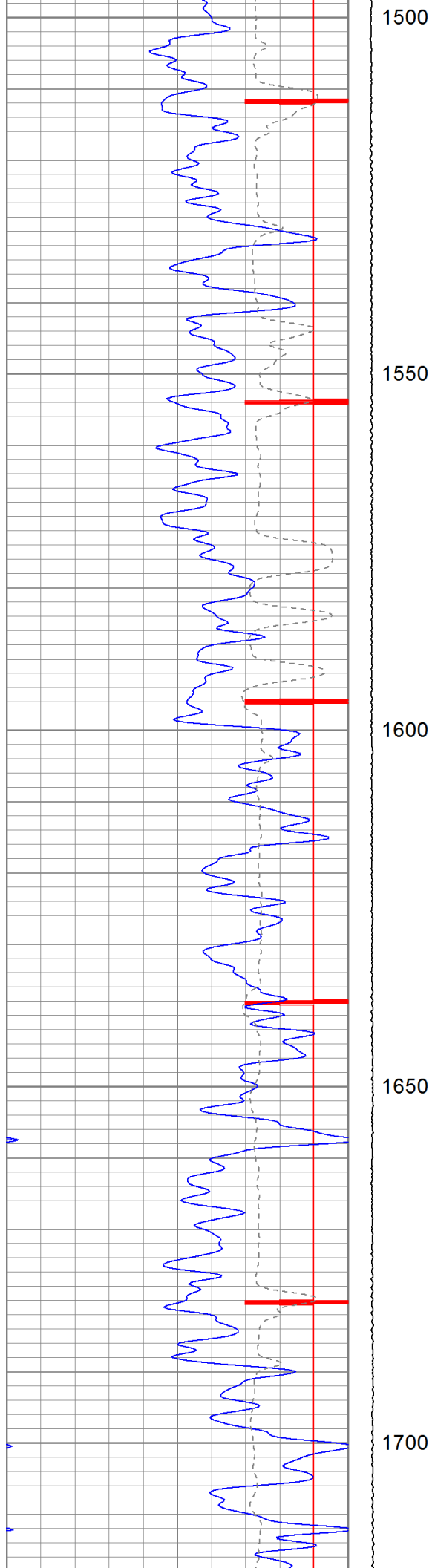
1350

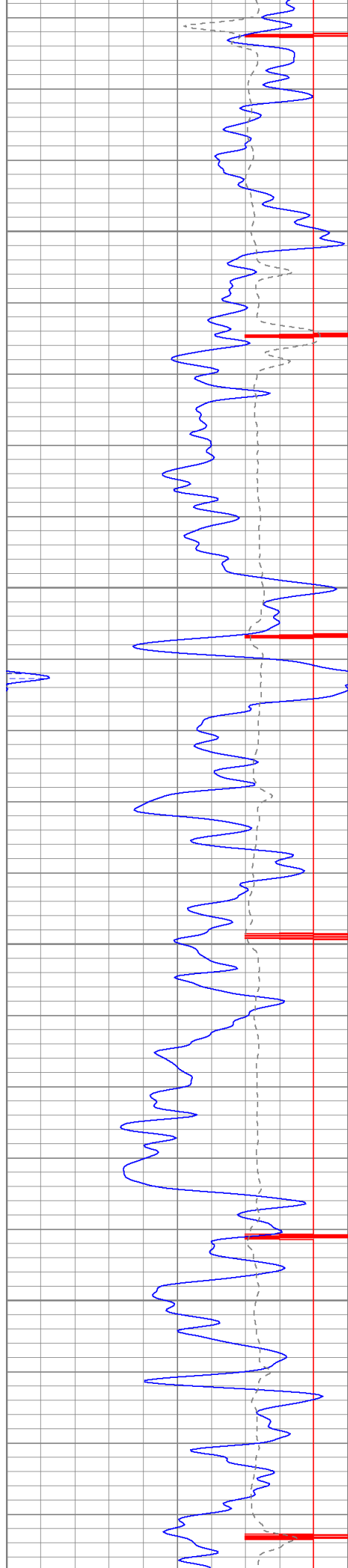
1400

1450







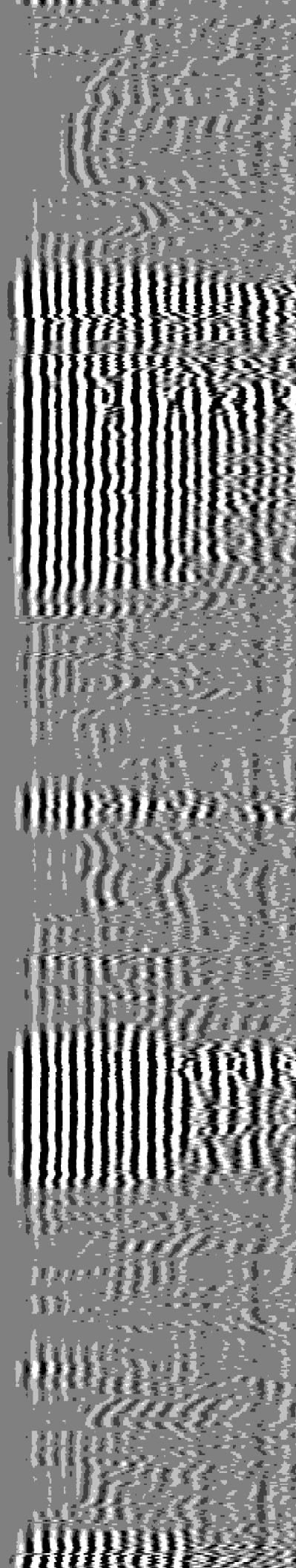
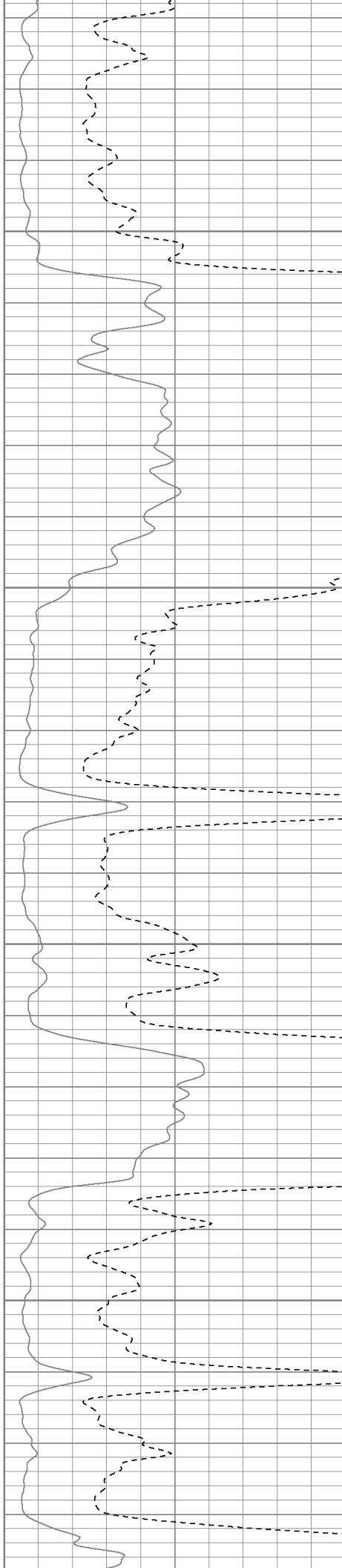


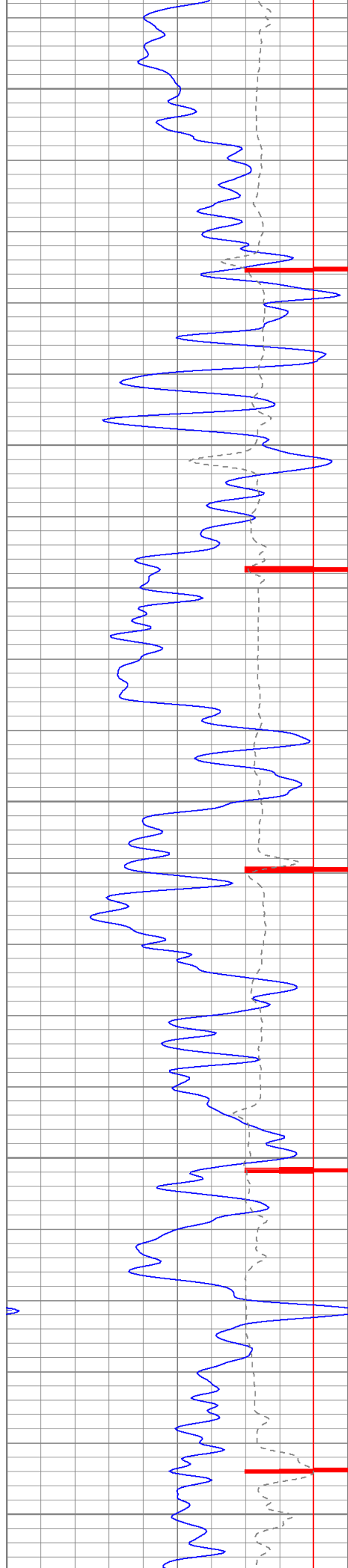
1750

1800

1850

1900





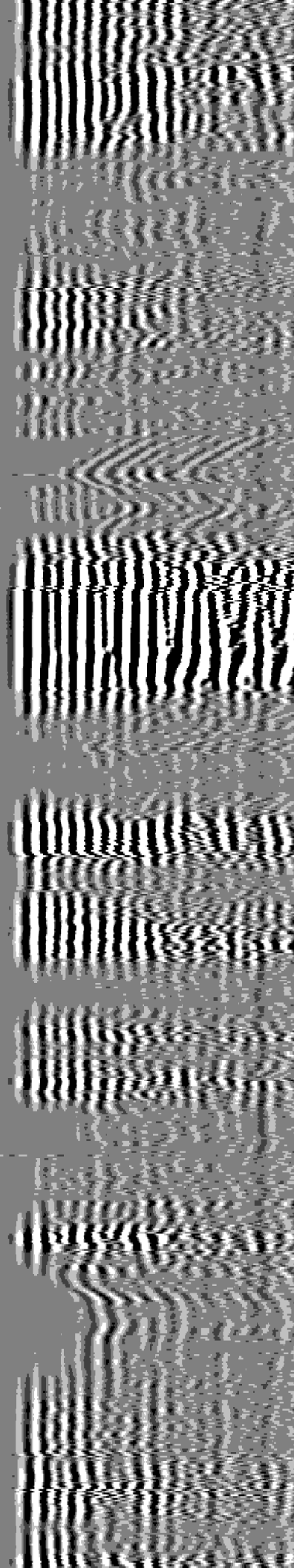
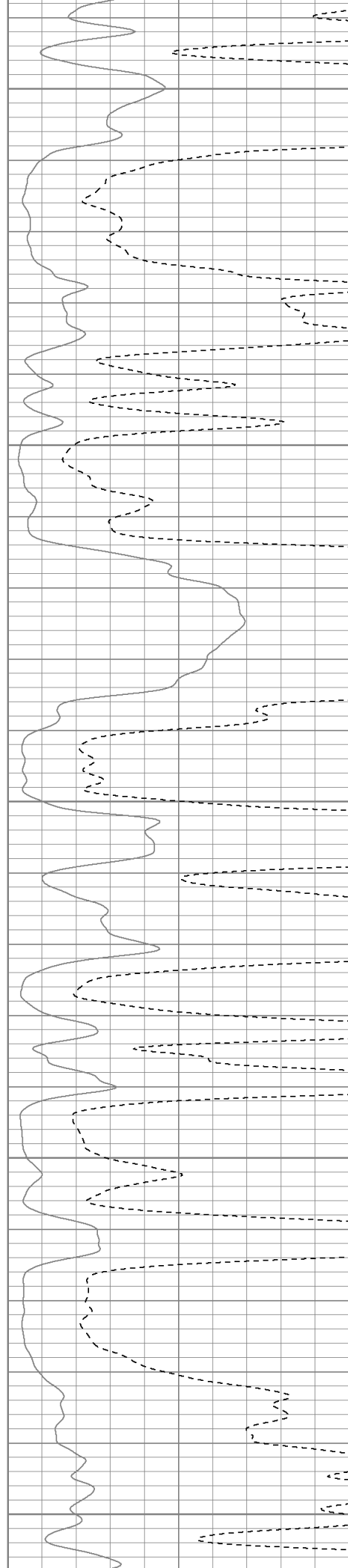
1950

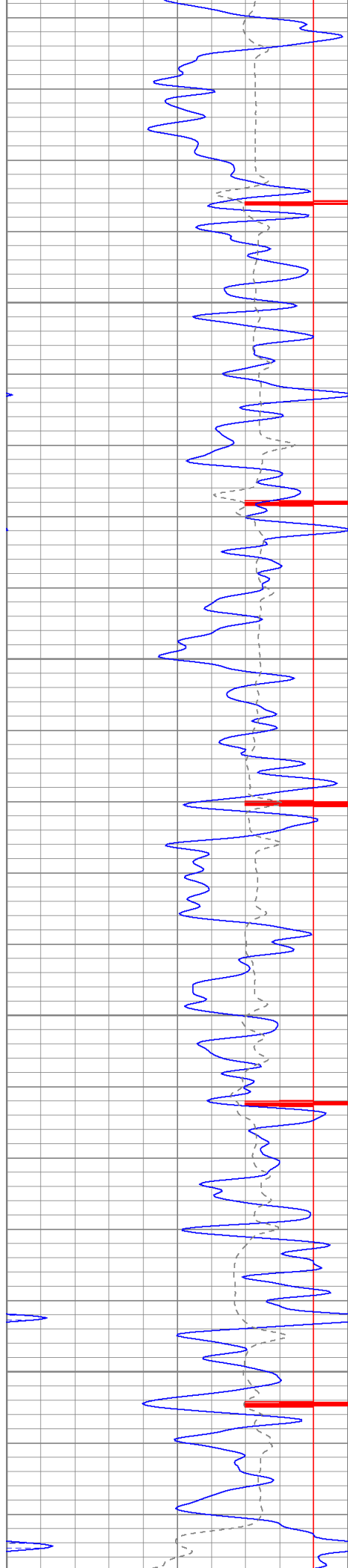
2000

2050

2100

2150



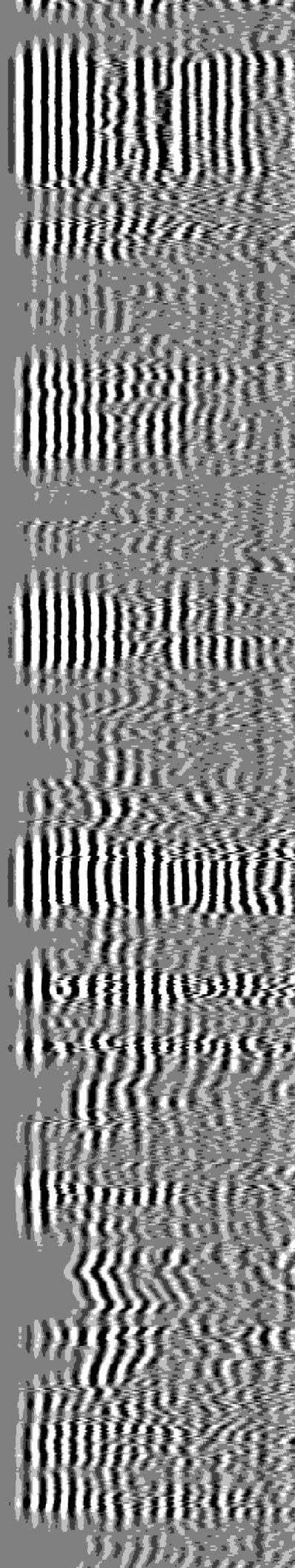
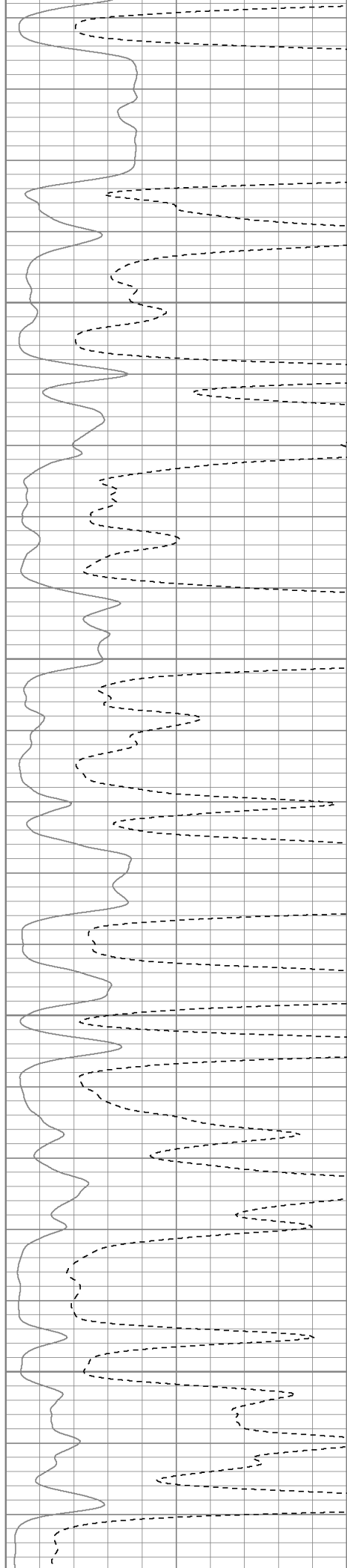


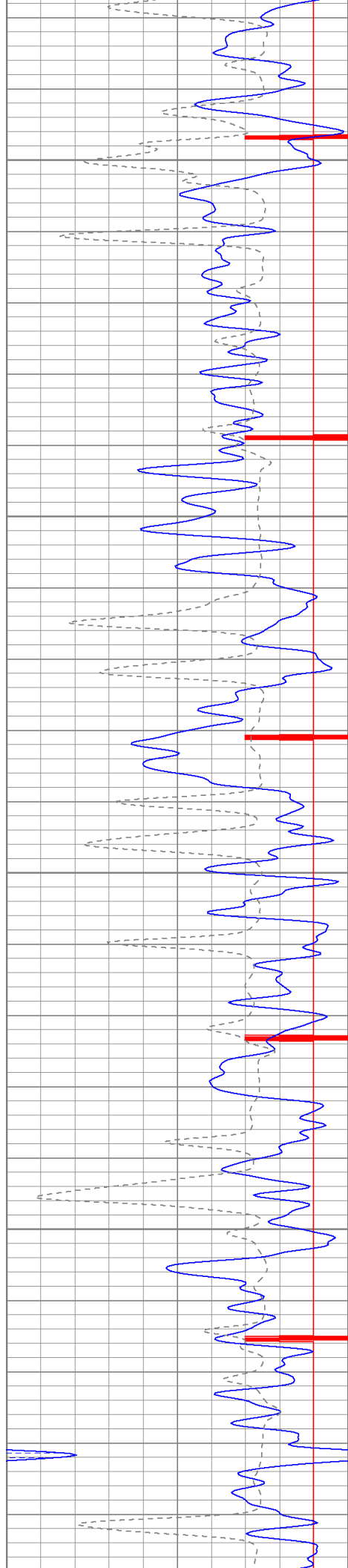
2200

2250

2300

2350



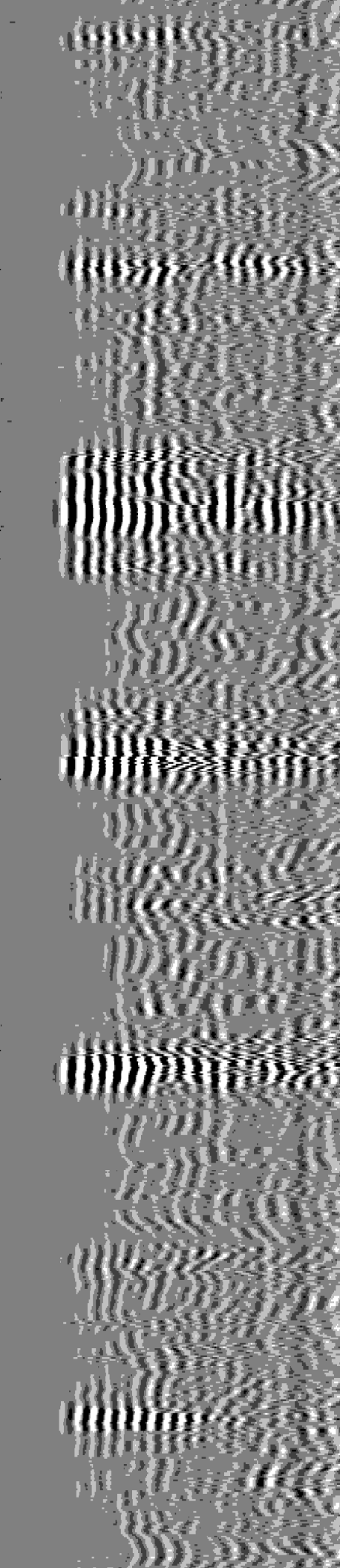
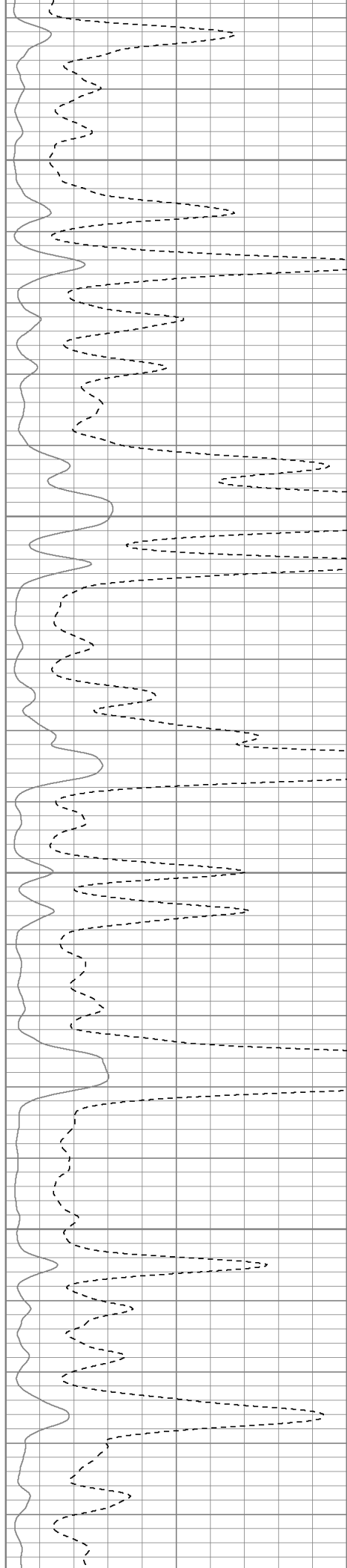


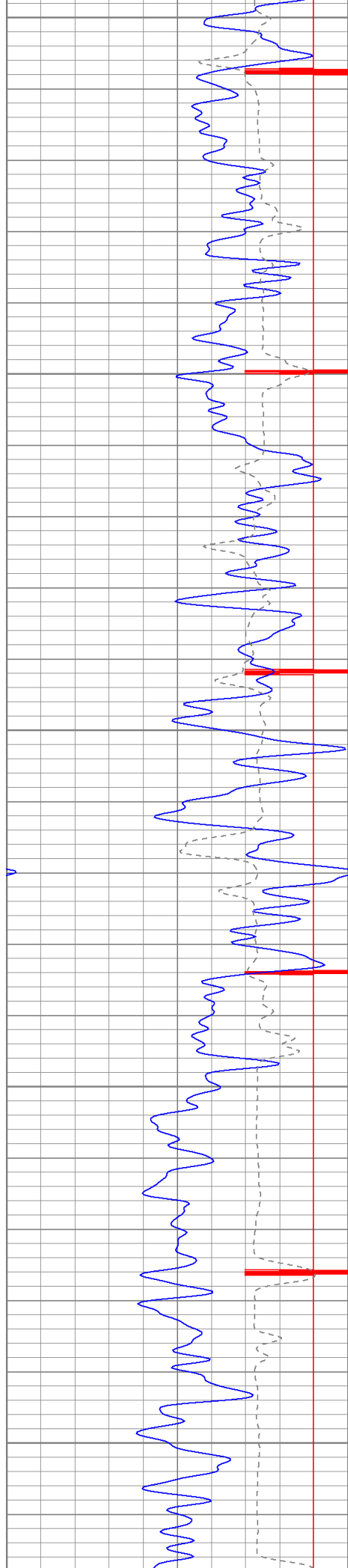
2400

2450

2500

2550





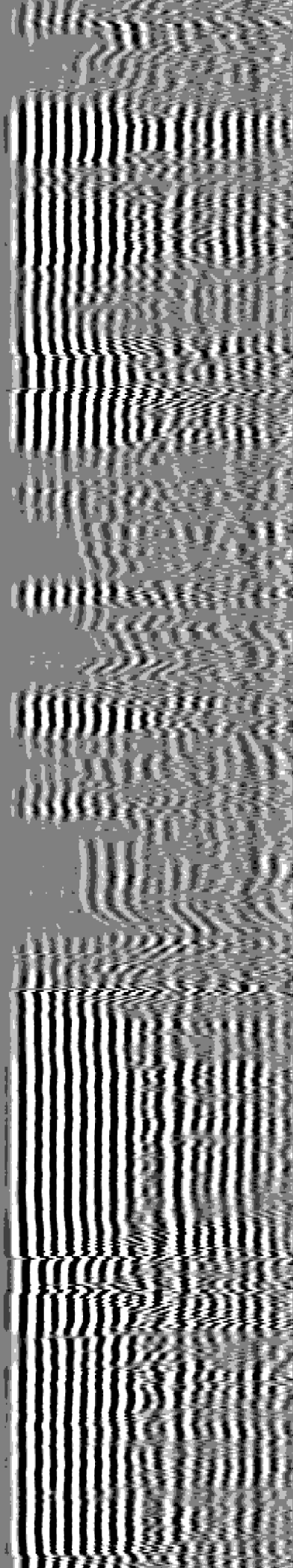
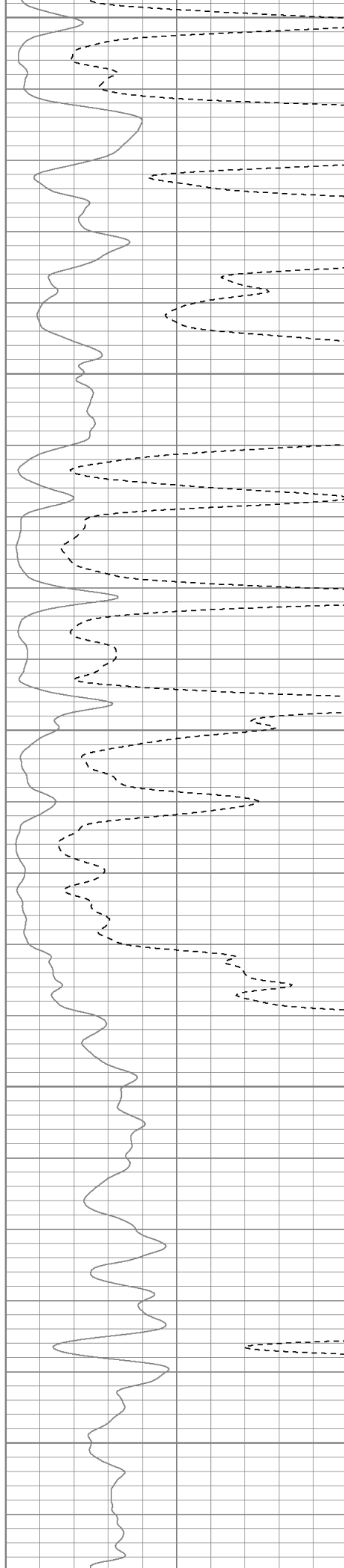
2600

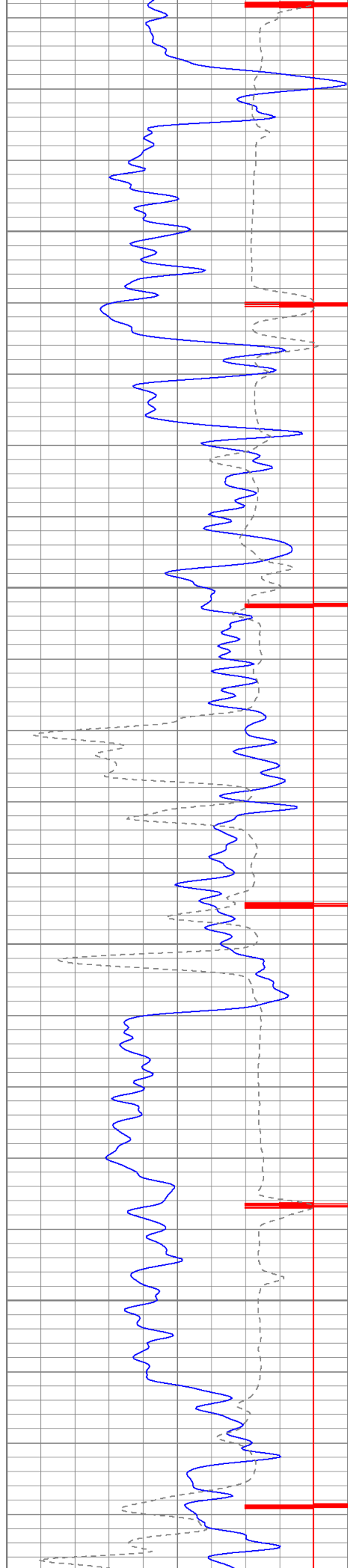
2650

2700

2750

2800



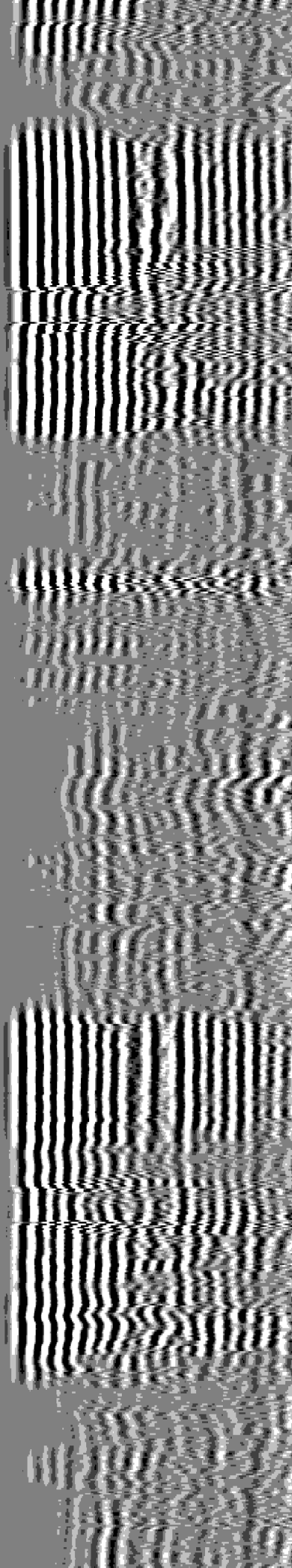
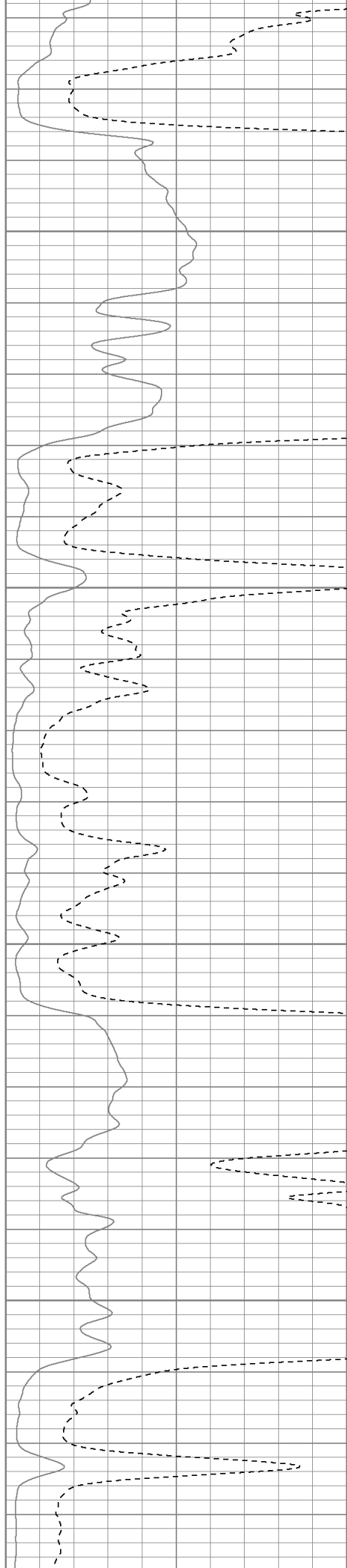


2850

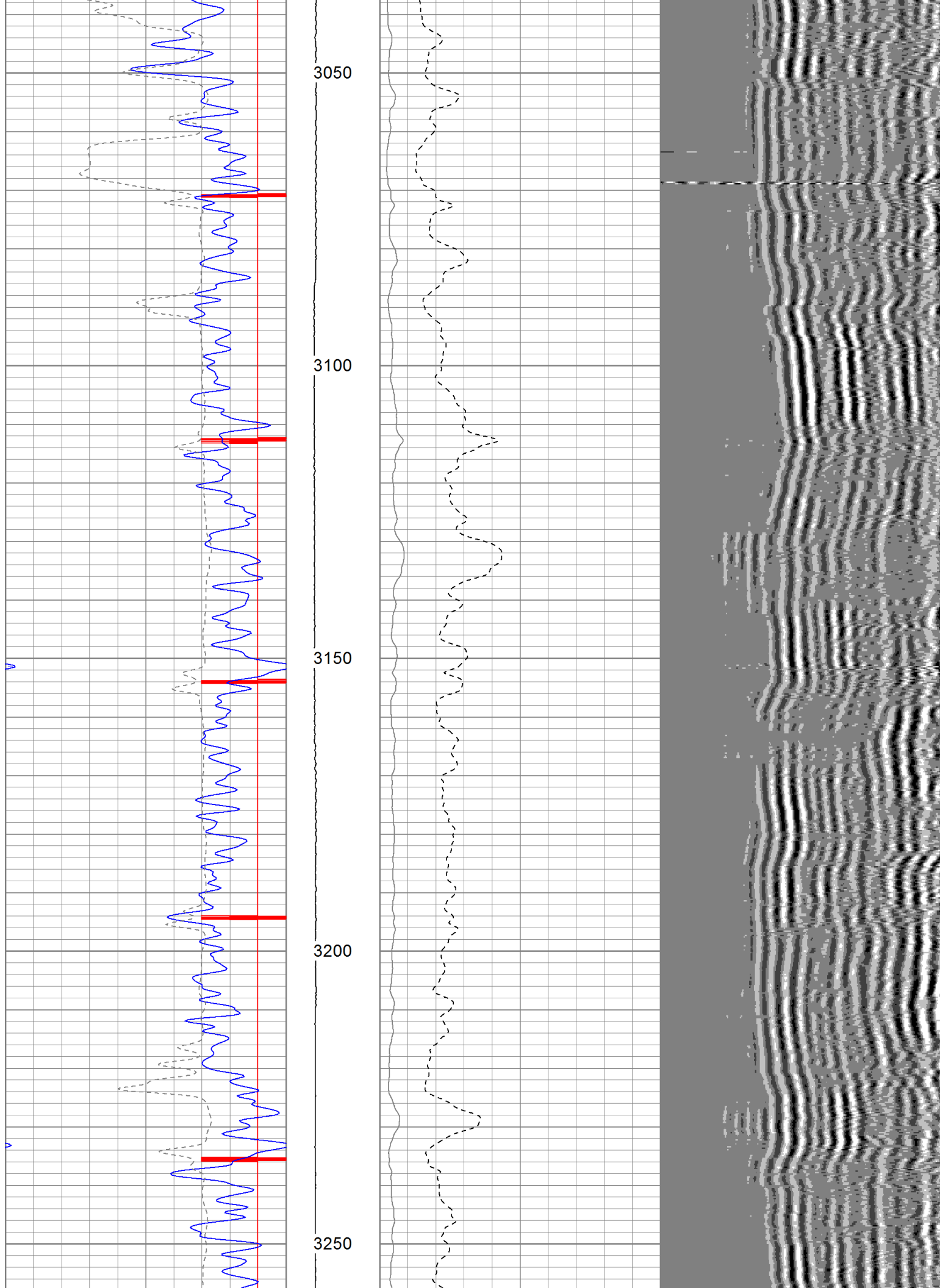
2900

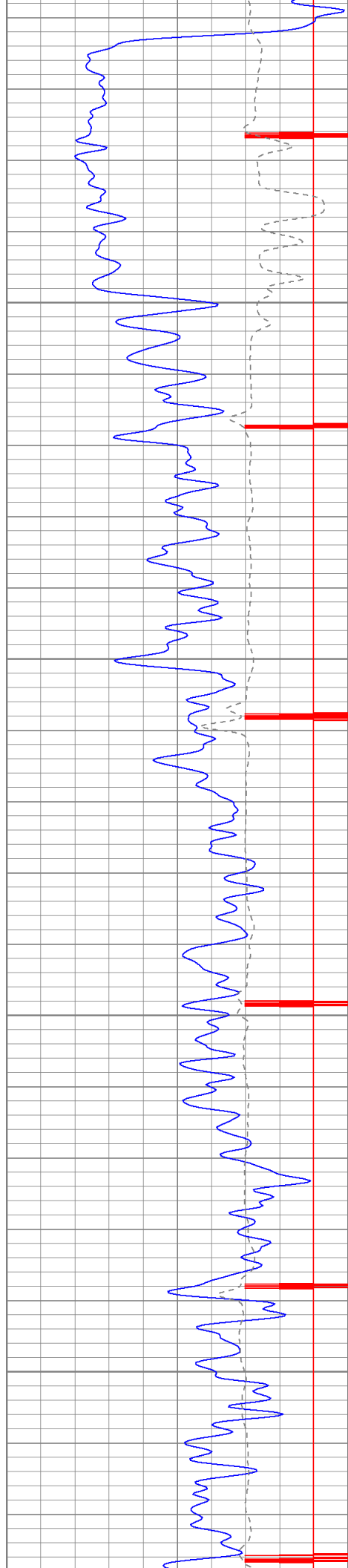
2950

3000







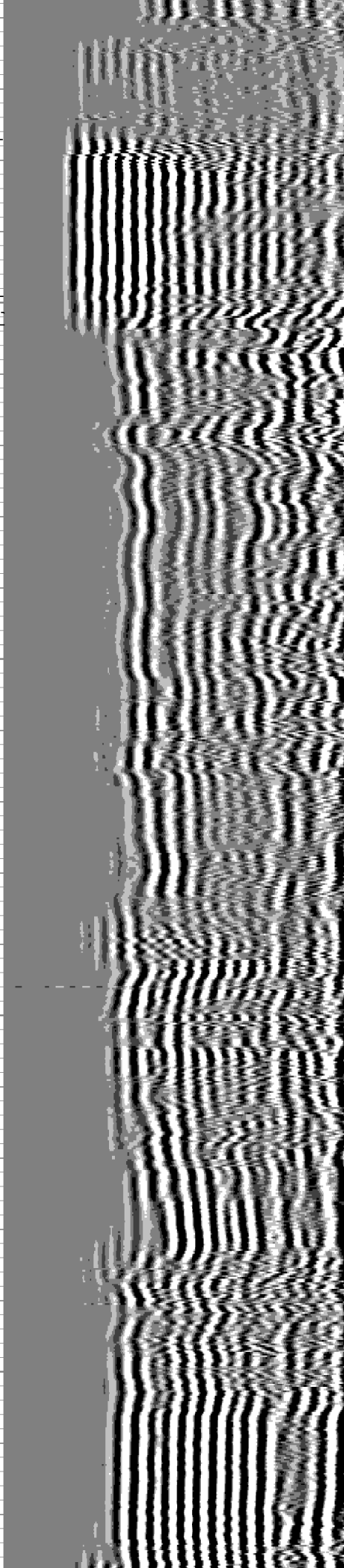
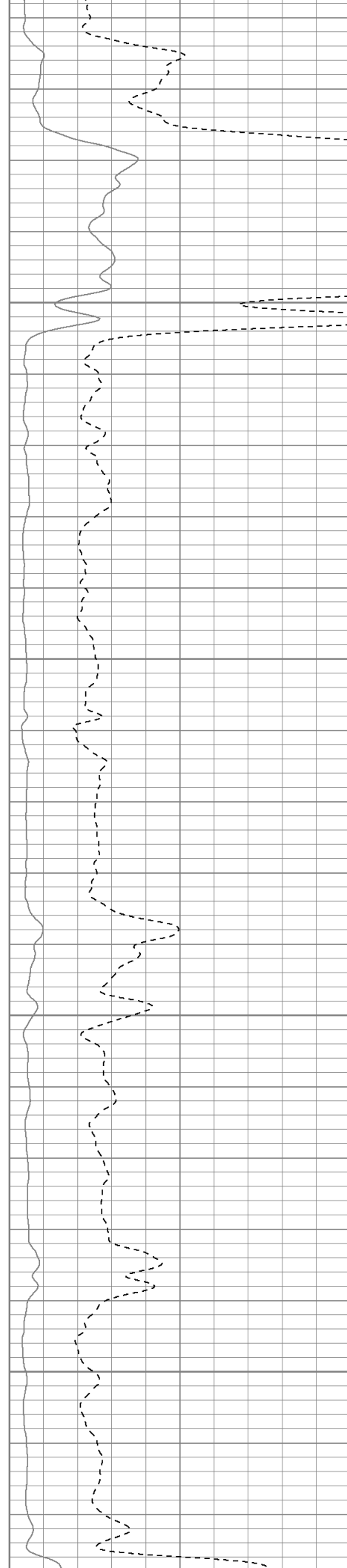


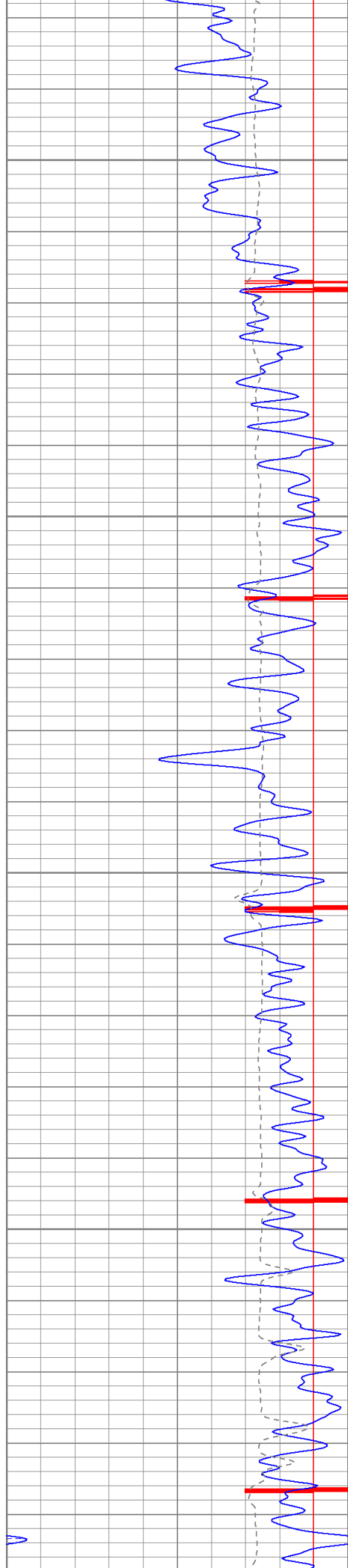
3300

3350

3400

3450



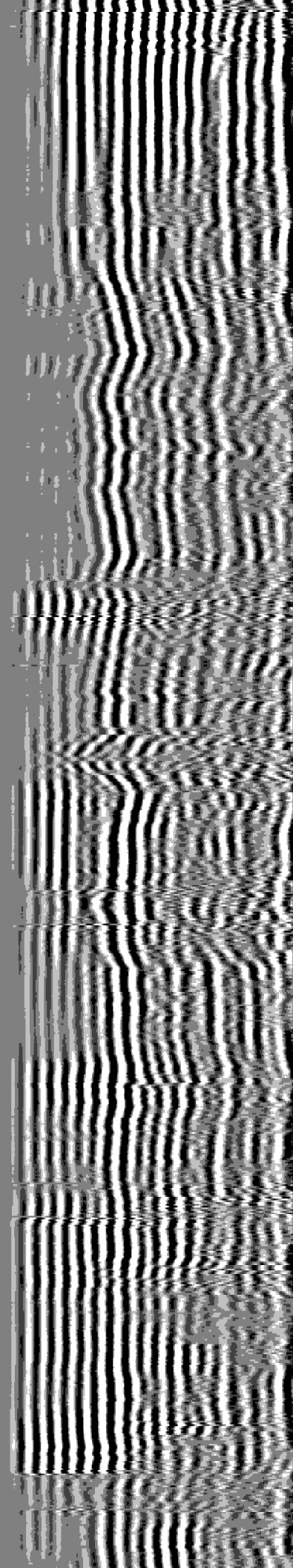
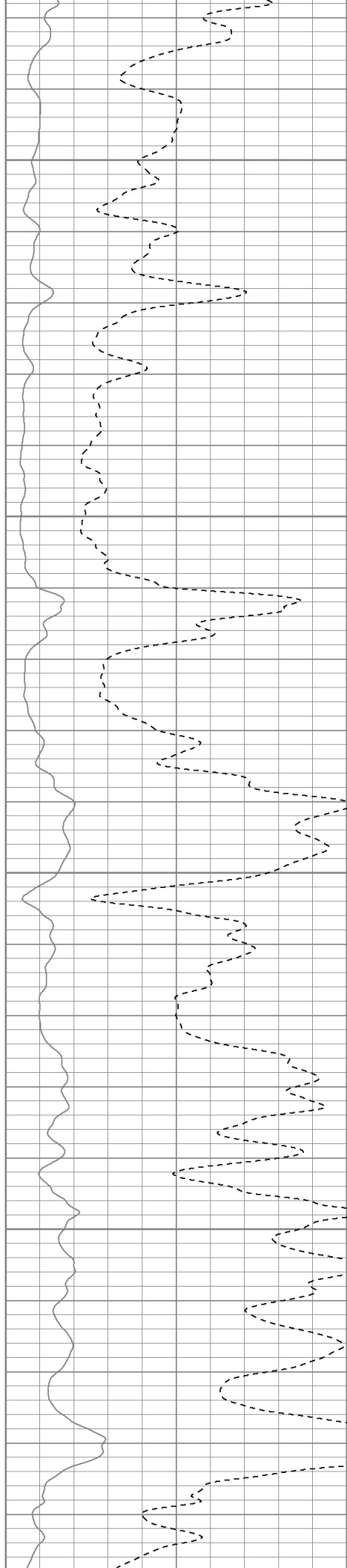


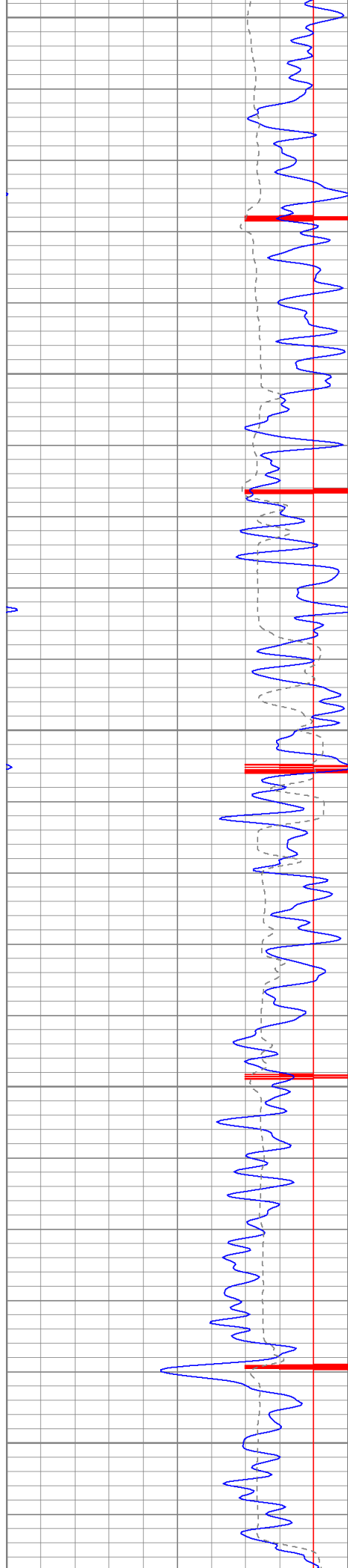
3500

3550

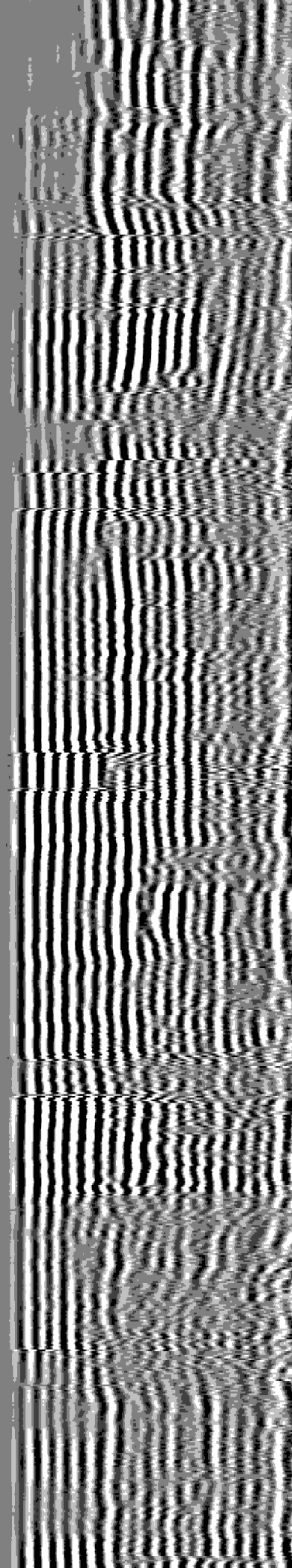
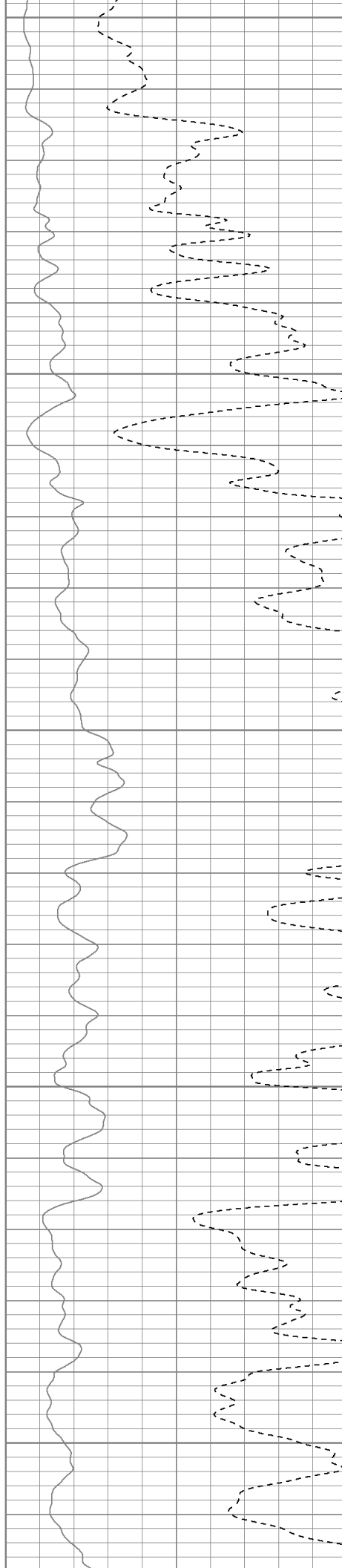
3600

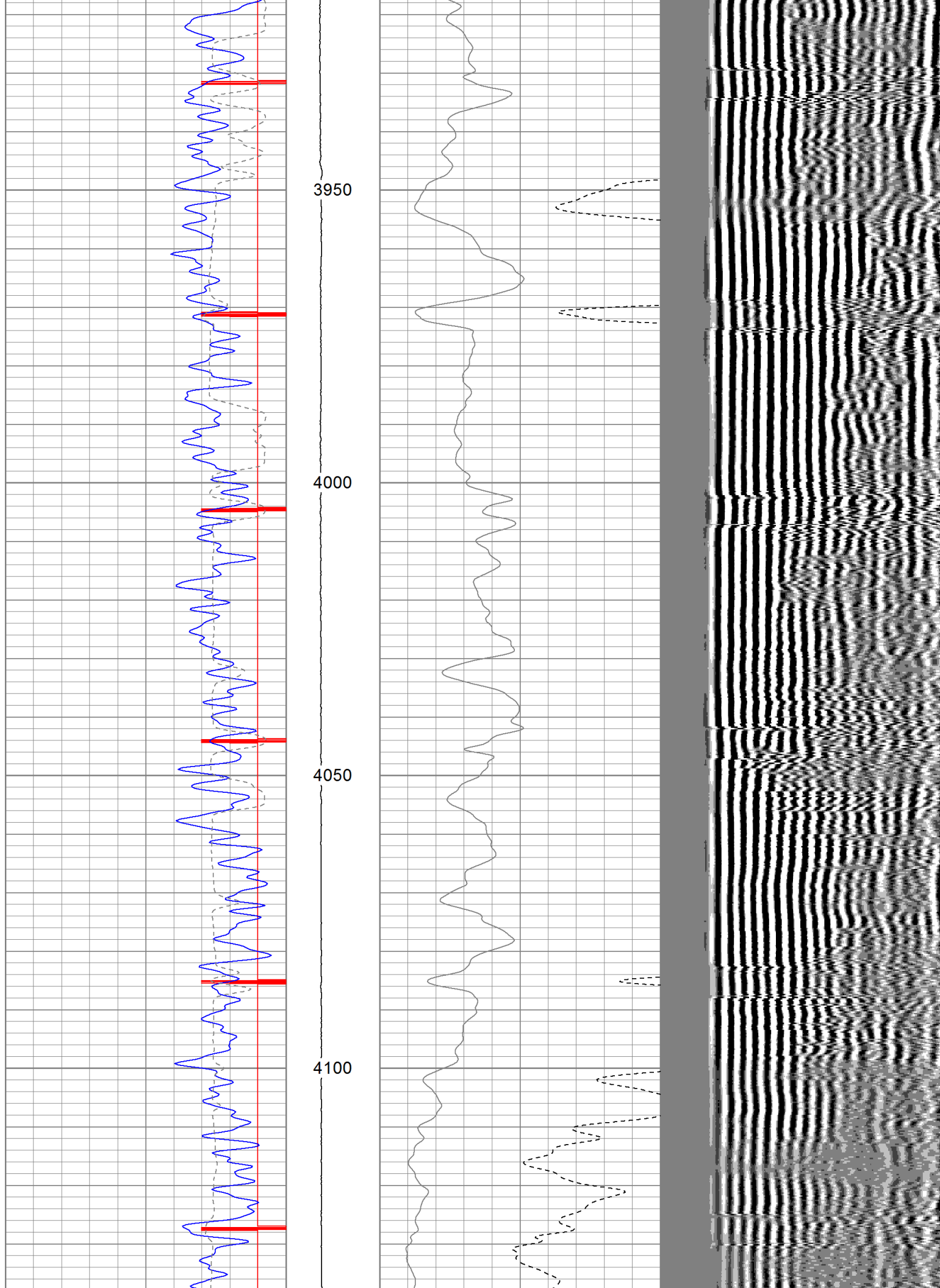
3650

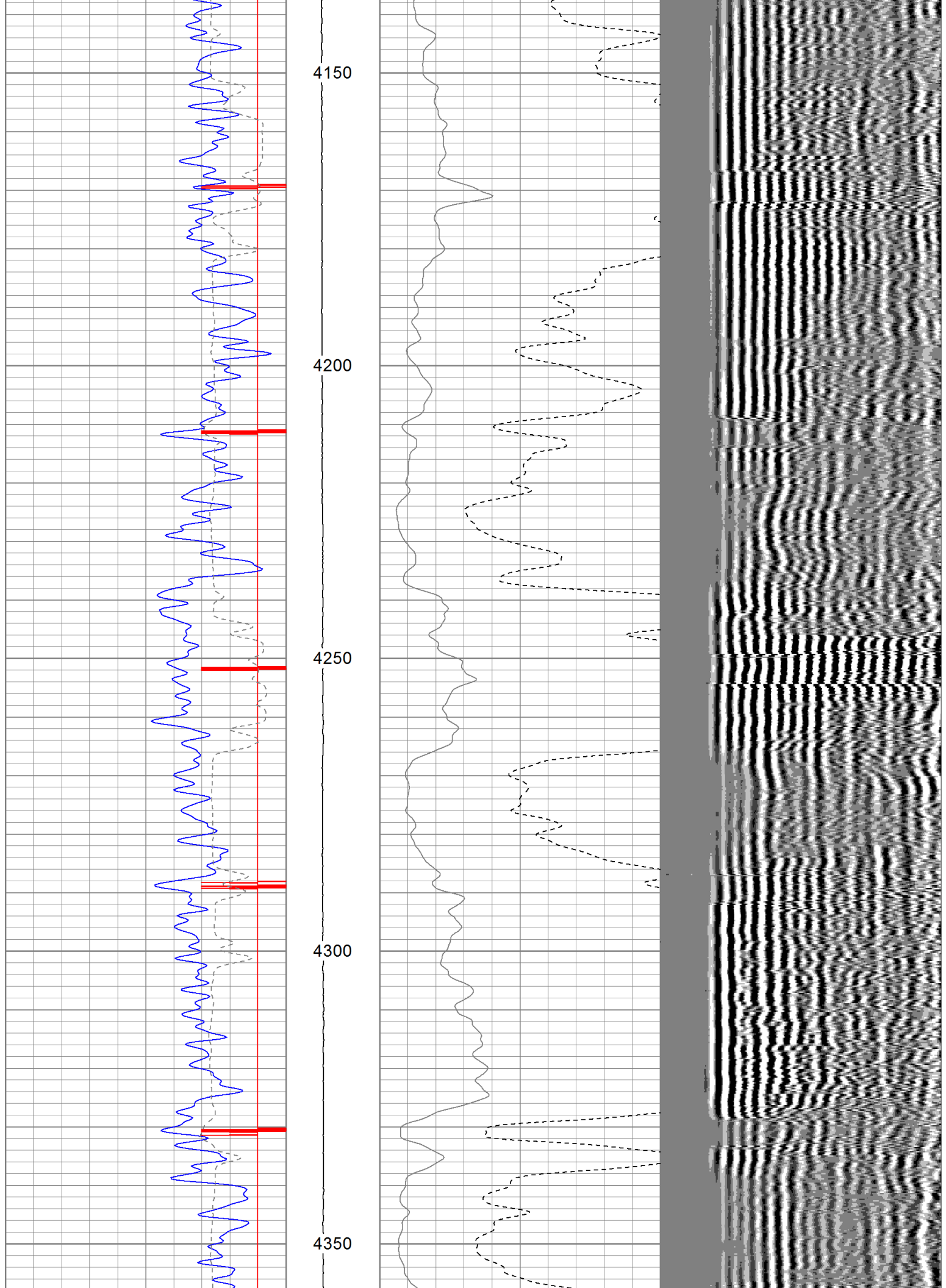


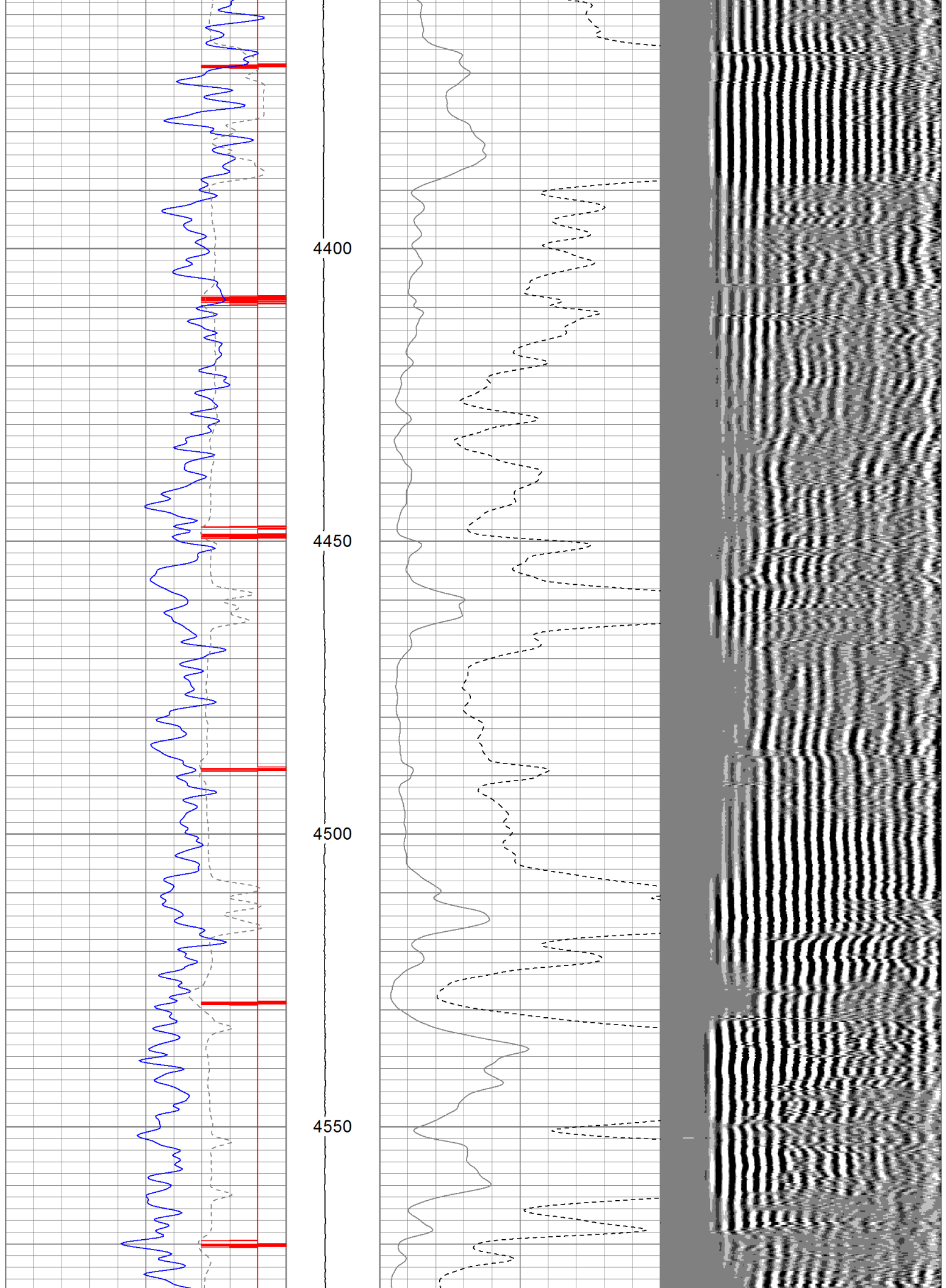


3700  
3750  
3800  
3850  
3900

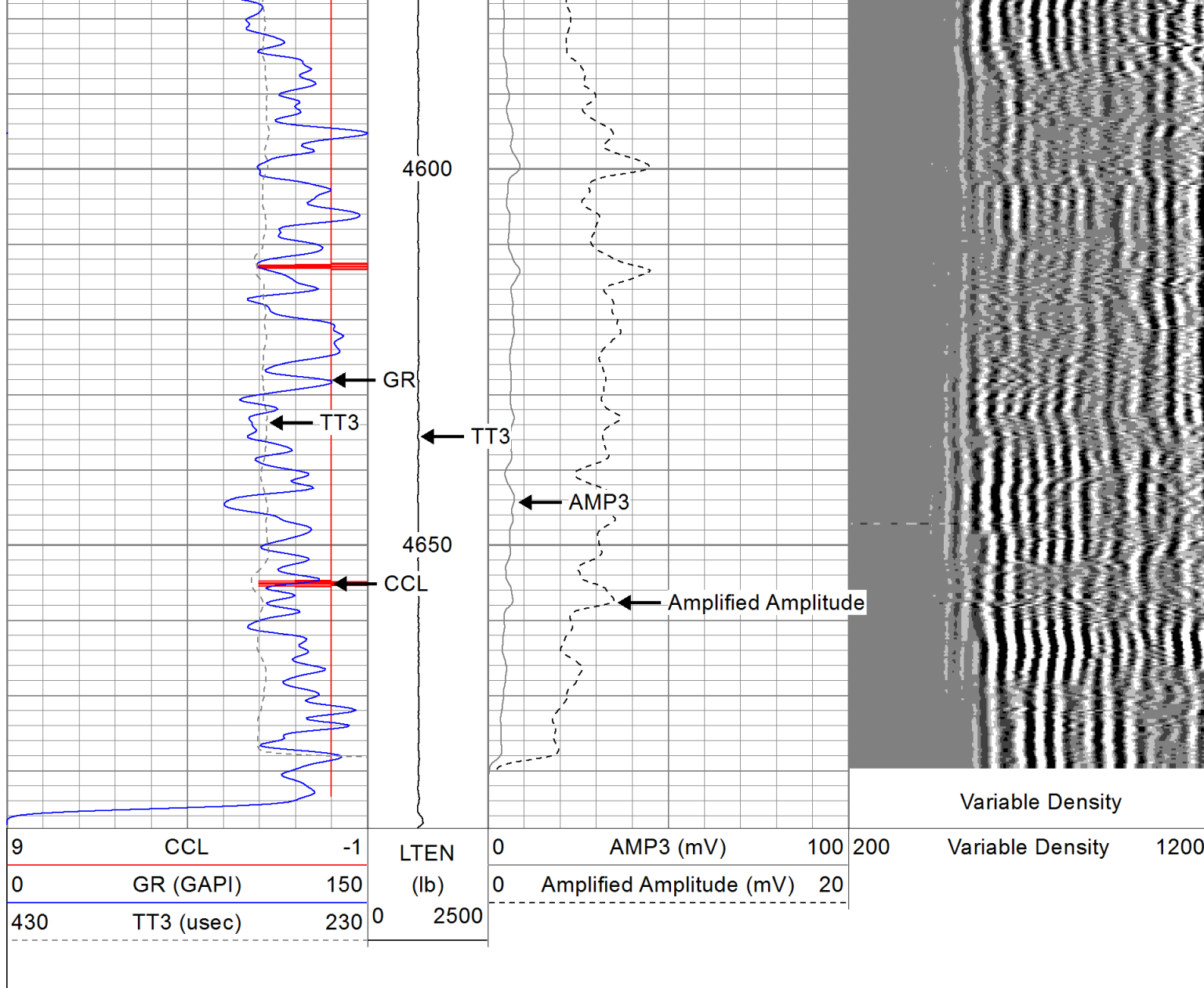








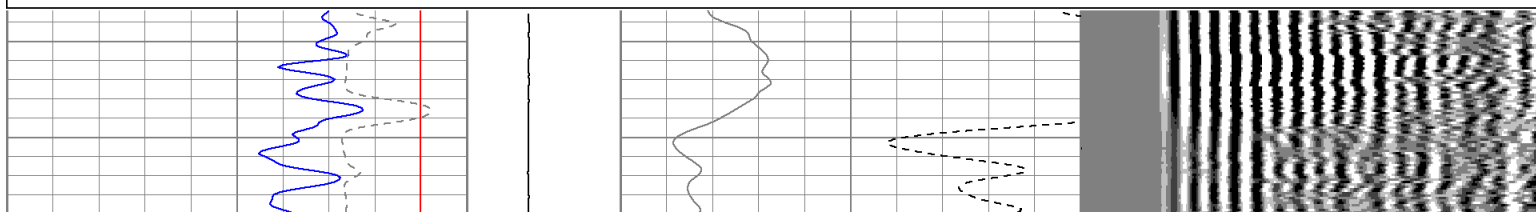


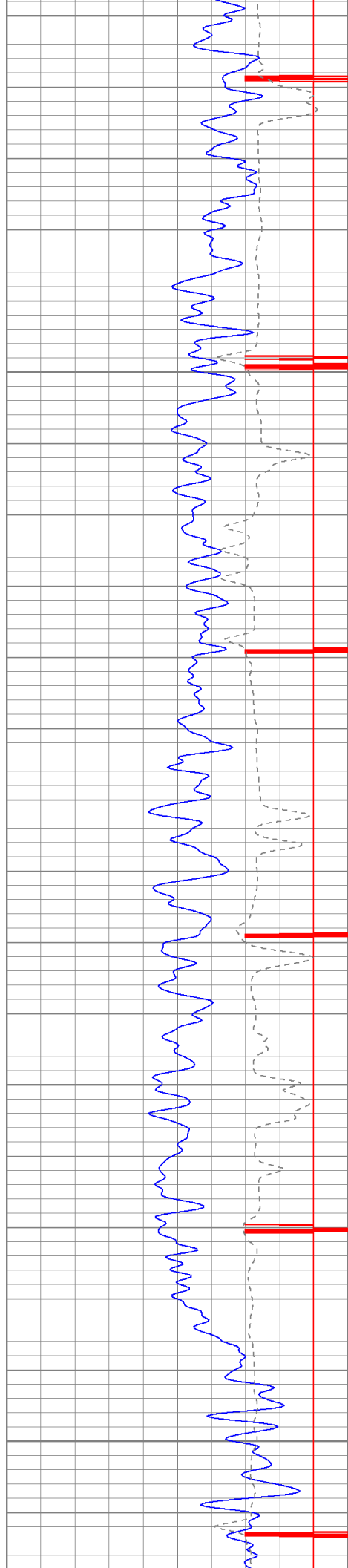


# Repeat Section

Database File: br fed 5-18-1-103.db  
 Dataset Pathname: pass6  
 Presentation Format: cbl  
 Dataset Creation: Wed Oct 03 14:13:37 2012 by Log Std Casedhole 10081  
 Charted by: Depth in Feet scaled 1:240

9	CCL	-1	LTEN	0	AMP3 (mV)	100	200	Variable Density	1200
0	GR (GAPI)	150	(lb)	0	Amplified Amplitude (mV)	20			
430	TT3 (usec)	230	0	2500					





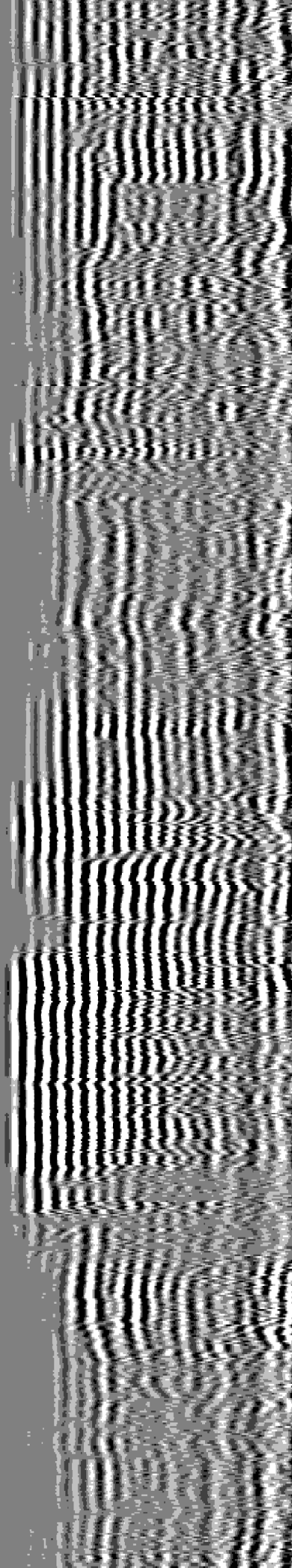
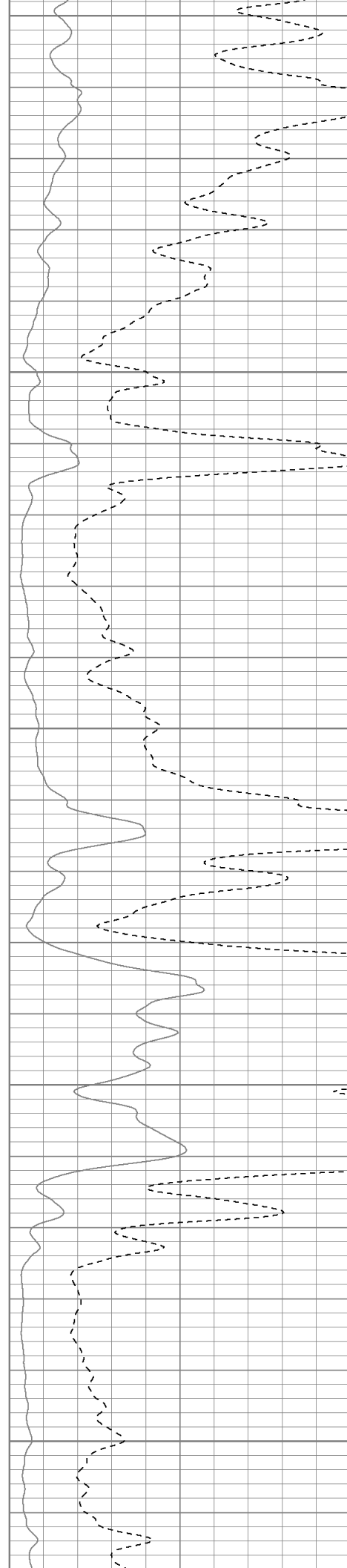
4400

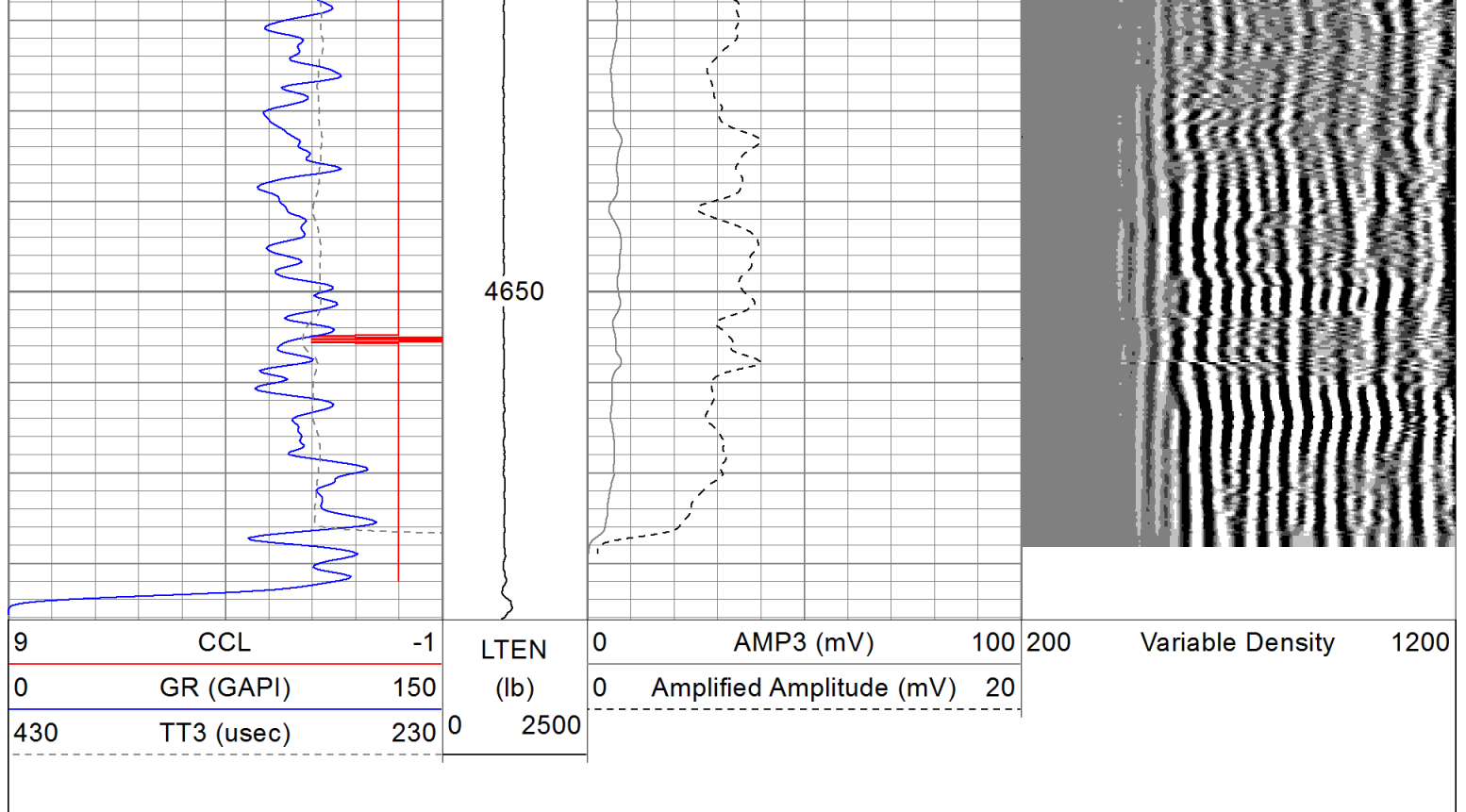
4450

4500

4550

4600





### Calibration Report

Database File: br fed 5-18-1-103.db  
Dataset Pathname: pass6  
Dataset Creation: Wed Oct 03 14:13:37 2012 by Log Std Casedhole 10081

### Gamma Ray Calibration Report

Serial Number: 030405  
Tool Model: P  
Performed: Wed Sep 19 09:26:14 2012

Calibrator Value: 150.0 GAPI

Background Reading: 54.0 cps  
Calibrator Reading: 250.0 cps

Sensitivity: 0.8000 GAPI/cps

### Cement Bond Log Calibration Report

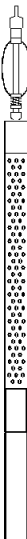
Serial Number: 020406  
Tool Model: P  
Performed: Wed Sep 19 09:26:35 2012

Depth: 72.1177 ft  
Casing Diameter: 5.5 in

3' Spacing 5' Spacing

Signal Zero: 1 mV  
Calibrated Amplitude: 81 mV  
Reading at Signal Zero: 0.0154785 V  
Reading in Free Pipe: 2.5 2.41799 V

Gain: 32.1994 33.3009  
Offset: 0.501602 0.478862

Sensor	Offset (ft)	Schematic	Description	Len (ft)	OD (in)	Wt (lb)
WVF3 WVF5  CCL GR	9.17		None	0.75	1.50	5.00
	8.17		TitanBig Big Titan 3 Bowspring Centralizer	3.00	2.75	25.00
			CBL-P (020406) Probe Single Pin	8.75	2.75	45.00
	4.08		CCL-Probe (030405) Probe 2 3/4"	1.42	2.75	7.50
	2.50		GR-P (030405) Probe 2 3/4"	3.50	2.75	34.00
		Dataset:	br fed 5-18-1-103.db: field/well/run1/pass7			
		Total Length:	17.42 ft			
		Total Weight:	116.50 lb			
		O.D.	2.75 in			