

# BONANZA CREEK ENERGY OPERATING

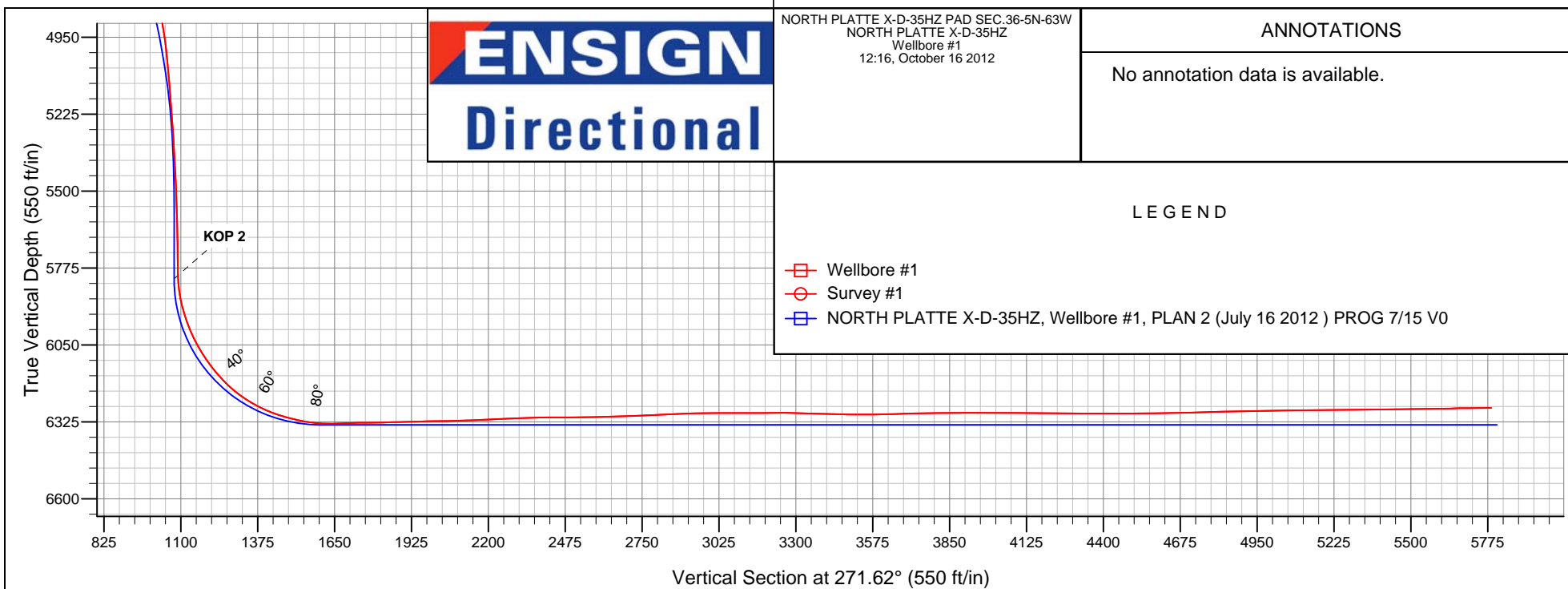
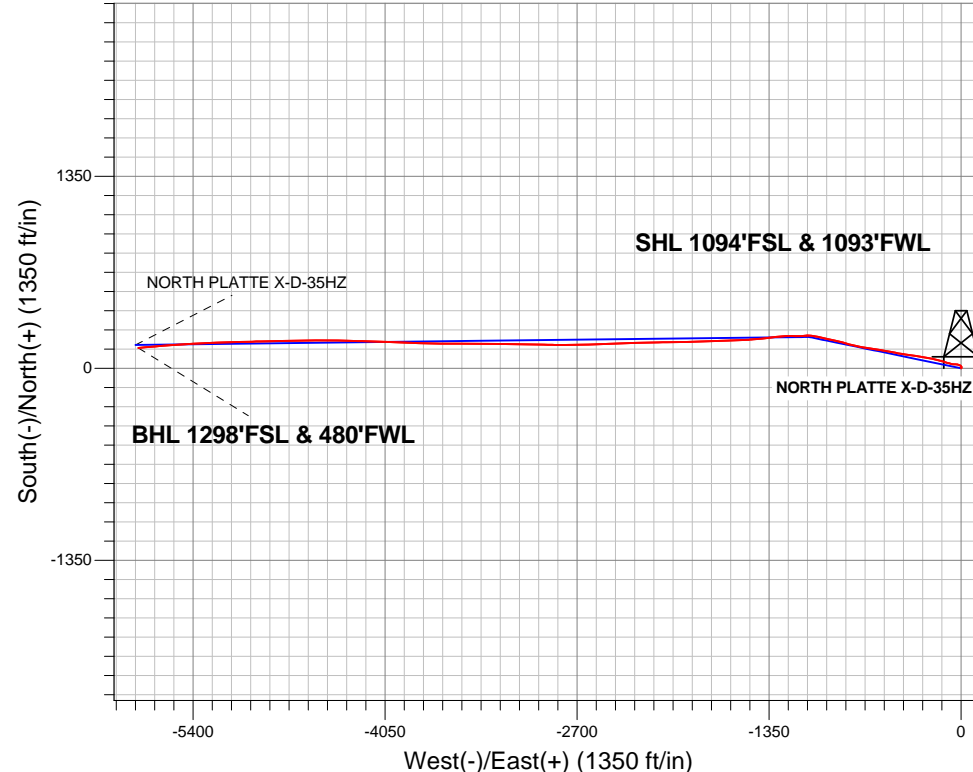
## Well Name: NORTH PLATTE X-D-35HZ

Surface Location: NORTH PLATTE X-D-35HZ PAD SEC.36-5N-63W  
North American Datum 1983 , US State Plane 1983 Colorado Northern Zone  
Ground Elevation: 4540.0

+N/-S	+E/-W	Northing	Easting	Latitude	Longitude	Slot
0.0	0.0	1373002.51	3309304.44	40.351980	-104.390190	
		KB 12' RIG 12	RKB @ 4552.0ft (KB 12' RIG 12)			

## FINAL SURVEY

**Projected Bottom Hole Location**  
**10960'MD 6275'TVD 143'N & 5785'W of SHL**  
**90.70 degree Incl @ 264.10 degree AZM**





**Directional**

# **BONANZA CREEK ENERGY OPERATING**

**SEC.36-T5N-R63W**

**NORTH PLATTE X-D-35HZ PAD SEC.36-5N-63W**

**NORTH PLATTE X-D-35HZ**

**Wellbore #1**

**Survey: Survey #1**

## **Standard Survey Report**

**16 October, 2012**



<b>Company:</b>	BONANZA CREEK ENERGY OPERATING	<b>Local Co-ordinate Reference:</b>	Well NORTH PLATTE X-D-35HZ
<b>Project:</b>	SEC.36-T5N-R63W	<b>TVD Reference:</b>	RKB @ 4552.0ft (KB 12' RIG 12)
<b>Site:</b>	NORTH PLATTE X-D-35HZ PAD SEC.36-5N-63W	<b>MD Reference:</b>	RKB @ 4552.0ft (KB 12' RIG 12)
<b>Well:</b>	NORTH PLATTE X-D-35HZ	<b>North Reference:</b>	True
<b>Wellbore:</b>	Wellbore #1	<b>Survey Calculation Method:</b>	Minimum Curvature
<b>Design:</b>	Wellbore #1	<b>Database:</b>	Landmark

Survey									
Measured Depth (ft)	Inclination (°)	Azimuth (°)	Vertical Depth (ft)	+N/-S (ft)	+E/-W (ft)	Vertical Section (ft)	Dogleg Rate (°/100ft)	Build Rate (°/100ft)	Turn Rate (°/100ft)
1,067.0	4.50	294.40	1,066.3	23.3	-12.9	13.5	1.24	0.86	-12.58
1,163.0	5.10	285.00	1,162.0	25.9	-20.4	21.2	1.03	0.63	-9.79
1,256.0	6.00	271.50	1,254.5	27.1	-29.3	30.0	1.70	0.97	-14.52
1,348.0	6.60	274.00	1,346.0	27.6	-39.4	40.1	0.72	0.65	2.72
1,442.0	6.90	275.00	1,439.3	28.5	-50.4	51.2	0.34	0.32	1.06
1,535.0	7.00	279.40	1,531.6	29.9	-61.5	62.4	0.58	0.11	4.73
1,628.0	7.60	283.30	1,623.9	32.2	-73.1	74.0	0.84	0.65	4.19
1,722.0	8.20	285.90	1,717.0	35.5	-85.6	86.6	0.74	0.64	2.77
1,815.0	8.50	286.80	1,809.0	39.3	-98.6	99.6	0.35	0.32	0.97
1,909.0	9.20	285.90	1,901.9	43.4	-112.4	113.6	0.76	0.74	-0.96
2,002.0	11.00	285.60	1,993.5	47.8	-128.1	129.4	1.94	1.94	-0.32
2,096.0	13.00	285.60	2,085.4	53.1	-147.0	148.4	2.13	2.13	0.00
2,189.0	15.80	285.90	2,175.5	59.3	-169.2	170.8	3.01	3.01	0.32
2,281.0	17.60	281.20	2,263.6	65.5	-194.9	196.7	2.44	1.96	-5.11
2,375.0	16.60	281.20	2,353.4	70.8	-222.0	223.9	1.06	-1.06	0.00
2,469.0	16.60	278.90	2,443.5	75.5	-248.5	250.5	0.70	0.00	-2.45
2,562.0	17.30	278.70	2,532.5	79.7	-275.3	277.4	0.76	0.75	-0.22
2,655.0	19.10	279.90	2,620.8	84.4	-303.9	306.2	1.98	1.94	1.29
2,748.0	19.00	279.20	2,708.7	89.4	-333.8	336.2	0.27	-0.11	-0.75
2,842.0	17.10	276.90	2,798.1	93.5	-362.7	365.2	2.16	-2.02	-2.45
2,935.0	16.90	278.90	2,887.0	97.3	-389.6	392.2	0.66	-0.22	2.15
3,029.0	15.40	278.90	2,977.3	101.3	-415.4	418.1	1.60	-1.60	0.00
3,122.0	15.20	280.10	3,067.0	105.4	-439.6	442.4	0.40	-0.22	1.29
3,217.0	15.70	280.10	3,158.6	109.8	-464.6	467.5	0.53	0.53	0.00
3,309.0	15.70	281.90	3,247.2	114.5	-489.0	492.0	0.53	0.00	1.96
3,403.0	17.30	280.80	3,337.3	119.8	-515.2	518.3	1.73	1.70	-1.17
3,496.0	19.50	279.80	3,425.5	125.0	-544.0	547.4	2.39	2.37	-1.08
3,590.0	21.70	278.50	3,513.5	130.3	-576.7	580.2	2.39	2.34	-1.38
3,684.0	22.60	277.80	3,600.6	135.3	-611.8	615.4	1.00	0.96	-0.74
3,777.0	20.80	277.70	3,687.0	139.9	-645.8	649.6	1.94	-1.94	-0.11
3,871.0	20.20	279.20	3,775.0	144.8	-678.4	682.2	0.85	-0.64	1.60
3,965.0	19.70	281.80	3,863.4	150.6	-709.9	713.9	1.08	-0.53	2.77
4,059.0	18.60	284.70	3,952.2	157.6	-739.9	744.1	1.55	-1.17	3.09
4,153.0	20.30	284.20	4,040.8	165.4	-770.3	774.6	1.82	1.81	-0.53
4,246.0	20.60	284.30	4,128.0	173.4	-801.8	806.3	0.32	0.32	0.11
4,340.0	20.20	284.20	4,216.1	181.5	-833.5	838.3	0.43	-0.43	-0.11
4,433.0	17.90	283.60	4,304.0	188.8	-863.0	868.0	2.48	-2.47	-0.65
4,526.0	18.10	282.60	4,392.4	195.3	-891.0	896.1	0.40	0.22	-1.08
4,620.0	17.90	282.90	4,481.8	201.7	-919.3	924.6	0.23	-0.21	0.32
4,714.0	16.70	284.00	4,571.5	208.2	-946.5	952.0	1.32	-1.28	1.17
4,808.0	16.20	282.00	4,661.7	214.2	-972.4	978.1	0.80	-0.53	-2.13
4,902.0	14.40	281.00	4,752.4	219.2	-996.7	1,002.5	1.94	-1.91	-1.06
4,996.0	11.50	280.30	4,844.0	223.1	-1,017.4	1,023.3	3.09	-3.09	-0.74
5,089.0	8.60	279.60	4,935.5	225.9	-1,033.4	1,039.4	3.12	-3.12	-0.75
5,183.0	6.00	281.30	5,028.8	228.0	-1,045.1	1,051.2	2.78	-2.77	1.81
5,277.0	4.50	280.80	5,122.4	229.7	-1,053.6	1,059.7	1.60	-1.60	-0.53
5,371.0	4.30	270.60	5,216.1	230.4	-1,060.7	1,066.8	0.86	-0.21	-10.85
5,465.0	3.30	273.30	5,309.9	230.6	-1,067.0	1,073.1	1.08	-1.06	2.87
5,559.0	2.60	265.20	5,403.8	230.6	-1,071.8	1,077.9	0.86	-0.74	-8.62
5,653.0	3.30	279.90	5,497.6	230.9	-1,076.6	1,082.7	1.09	0.74	15.64
5,745.0	1.50	263.90	5,589.5	231.2	-1,080.4	1,086.5	2.07	-1.96	-17.39
5,837.0	0.90	229.10	5,681.5	230.6	-1,082.1	1,088.2	1.00	-0.65	-37.83
5,861.0	0.60	246.00	5,705.5	230.4	-1,082.4	1,088.5	1.54	-1.25	70.42

<b>Company:</b>	BONANZA CREEK ENERGY OPERATING	<b>Local Co-ordinate Reference:</b>	Well NORTH PLATTE X-D-35HZ
<b>Project:</b>	SEC.36-T5N-R63W	<b>TVD Reference:</b>	RKB @ 4552.0ft (KB 12' RIG 12)
<b>Site:</b>	NORTH PLATTE X-D-35HZ PAD SEC.36-5N-63W	<b>MD Reference:</b>	RKB @ 4552.0ft (KB 12' RIG 12)
<b>Well:</b>	NORTH PLATTE X-D-35HZ	<b>North Reference:</b>	True
<b>Wellbore:</b>	Wellbore #1	<b>Survey Calculation Method:</b>	Minimum Curvature
<b>Design:</b>	Wellbore #1	<b>Database:</b>	Landmark

Survey									
Measured Depth (ft)	Inclination (°)	Azimuth (°)	Vertical Depth (ft)	+N/-S (ft)	+E/-W (ft)	Vertical Section (ft)	Dogleg Rate (°/100ft)	Build Rate (°/100ft)	Turn Rate (°/100ft)
5,892.0	0.70	209.10	5,736.5	230.2	-1,082.6	1,088.7	1.36	0.32	-119.03
5,923.0	0.50	216.30	5,767.5	229.9	-1,082.8	1,088.9	0.69	-0.65	23.23
5,955.0	2.20	270.10	5,799.5	229.8	-1,083.5	1,089.6	6.08	5.31	168.13
5,986.0	4.50	266.90	5,830.5	229.7	-1,085.3	1,091.4	7.44	7.42	-10.32
6,017.0	8.20	265.90	5,861.3	229.5	-1,088.7	1,094.8	11.94	11.94	-3.23
6,048.0	12.00	266.00	5,891.8	229.1	-1,094.1	1,100.2	12.26	12.26	0.32
6,079.0	15.60	266.40	5,921.9	228.6	-1,101.5	1,107.6	11.62	11.61	1.29
6,110.0	18.50	265.70	5,951.5	228.0	-1,110.6	1,116.6	9.38	9.35	-2.26
6,142.0	21.20	266.70	5,981.6	227.3	-1,121.4	1,127.4	8.50	8.44	3.13
6,173.0	24.10	268.30	6,010.2	226.8	-1,133.3	1,139.3	9.56	9.35	5.16
6,204.0	27.30	269.50	6,038.1	226.5	-1,146.8	1,152.7	10.46	10.32	3.87
6,235.0	30.40	271.50	6,065.3	226.7	-1,161.7	1,167.7	10.47	10.00	6.45
6,266.0	33.50	272.40	6,091.6	227.2	-1,178.1	1,184.1	10.12	10.00	2.90
6,297.0	36.50	270.40	6,117.0	227.7	-1,195.9	1,201.9	10.36	9.68	-6.45
6,329.0	39.10	267.80	6,142.3	227.3	-1,215.5	1,221.5	9.53	8.13	-8.13
6,360.0	42.70	266.00	6,165.7	226.2	-1,235.8	1,241.7	12.22	11.61	-5.81
6,391.0	45.60	266.00	6,187.9	224.7	-1,257.3	1,263.2	9.35	9.35	0.00
6,423.0	49.80	265.00	6,209.5	222.9	-1,280.9	1,286.7	13.33	13.13	-3.13
6,454.0	53.80	264.10	6,228.6	220.5	-1,305.1	1,310.9	13.10	12.90	-2.90
6,485.0	57.80	263.40	6,246.1	217.8	-1,330.6	1,336.3	13.04	12.90	-2.26
6,517.0	61.40	263.40	6,262.2	214.6	-1,358.0	1,363.6	11.25	11.25	0.00
6,548.0	64.70	262.70	6,276.3	211.2	-1,385.5	1,390.9	10.83	10.65	-2.26
6,579.0	68.20	263.40	6,288.7	207.8	-1,413.7	1,419.0	11.48	11.29	2.26
6,610.0	71.80	264.80	6,299.3	204.8	-1,442.6	1,447.9	12.36	11.61	4.52
6,641.0	74.60	266.20	6,308.2	202.5	-1,472.2	1,477.4	10.01	9.03	4.52
6,673.0	77.30	267.30	6,316.0	200.7	-1,503.2	1,508.3	9.07	8.44	3.44
6,703.0	79.30	267.80	6,322.1	199.5	-1,532.6	1,537.6	6.86	6.67	1.67
6,721.5	80.98	267.92	6,325.3	198.8	-1,550.8	1,555.8	9.08	9.06	0.63
T1 1320°FSL & 460°FEL									
6,735.0	82.20	268.00	6,327.2	198.3	-1,564.1	1,569.1	9.08	9.06	0.62
6,766.0	86.30	266.90	6,330.3	196.9	-1,594.9	1,599.9	13.69	13.23	-3.55
6,797.0	90.80	267.40	6,331.1	195.4	-1,625.9	1,630.8	14.61	14.52	1.61
6,828.0	91.40	267.60	6,330.5	194.0	-1,656.8	1,661.7	2.04	1.94	0.65
6,860.0	91.30	267.80	6,329.8	192.8	-1,688.8	1,693.6	0.70	-0.31	0.63
6,928.0	91.30	268.30	6,328.2	190.5	-1,756.7	1,761.4	0.74	0.00	0.74
6,959.0	91.40	268.30	6,327.5	189.5	-1,787.7	1,792.4	0.32	0.32	0.00
6,990.0	91.50	268.30	6,326.7	188.6	-1,818.7	1,823.3	0.32	0.32	0.00
7,021.0	91.50	268.80	6,325.9	187.8	-1,849.7	1,854.3	1.61	0.00	1.61
7,052.0	91.40	268.80	6,325.1	187.2	-1,880.7	1,885.2	0.32	-0.32	0.00
7,083.0	91.50	268.70	6,324.3	186.5	-1,911.6	1,916.2	0.46	0.32	-0.32
7,115.0	91.70	269.50	6,323.4	186.0	-1,943.6	1,948.1	2.58	0.63	2.50
7,146.0	91.60	269.40	6,322.6	185.7	-1,974.6	1,979.1	0.46	-0.32	-0.32
7,175.0	90.90	268.80	6,321.9	185.2	-2,003.6	2,008.0	3.18	-2.41	-2.07
7,206.0	90.80	268.70	6,321.5	184.6	-2,034.6	2,039.0	0.46	-0.32	-0.32
7,238.0	91.00	268.50	6,321.0	183.8	-2,066.6	2,071.0	0.88	0.63	-0.63
7,269.0	91.80	268.50	6,320.2	183.0	-2,097.6	2,101.9	2.58	2.58	0.00
7,299.0	92.10	268.50	6,319.2	182.2	-2,127.5	2,131.8	1.00	1.00	0.00
7,330.0	92.20	268.30	6,318.0	181.3	-2,158.5	2,162.8	0.72	0.32	-0.65
7,362.0	92.40	269.20	6,316.7	180.6	-2,190.5	2,194.7	2.88	0.63	2.81
7,393.0	92.90	269.00	6,315.3	180.1	-2,221.4	2,225.6	1.74	1.61	-0.65
7,425.0	93.00	269.20	6,313.7	179.6	-2,253.4	2,257.6	0.70	0.31	0.63
7,456.0	92.10	268.80	6,312.3	179.1	-2,284.3	2,288.5	3.18	-2.90	-1.29
7,487.0	91.80	268.10	6,311.2	178.3	-2,315.3	2,319.4	2.46	-0.97	-2.26

<b>Company:</b>	BONANZA CREEK ENERGY OPERATING	<b>Local Co-ordinate Reference:</b>	Well NORTH PLATTE X-D-35HZ
<b>Project:</b>	SEC.36-T5N-R63W	<b>TVD Reference:</b>	RKB @ 4552.0ft (KB 12' RIG 12)
<b>Site:</b>	NORTH PLATTE X-D-35HZ PAD SEC.36-5N-63W	<b>MD Reference:</b>	RKB @ 4552.0ft (KB 12' RIG 12)
<b>Well:</b>	NORTH PLATTE X-D-35HZ	<b>North Reference:</b>	True
<b>Wellbore:</b>	Wellbore #1	<b>Survey Calculation Method:</b>	Minimum Curvature
<b>Design:</b>	Wellbore #1	<b>Database:</b>	Landmark

Survey									
Measured Depth (ft)	Inclination (°)	Azimuth (°)	Vertical Depth (ft)	+N/-S (ft)	+E/-W (ft)	Vertical Section (ft)	Dogleg Rate (°/100ft)	Build Rate (°/100ft)	Turn Rate (°/100ft)
7,518.0	91.80	267.60	6,310.2	177.1	-2,346.3	2,350.3	1.61	0.00	-1.61
7,549.0	91.20	268.10	6,309.4	175.9	-2,377.2	2,381.3	2.52	-1.94	1.61
7,580.0	90.60	267.80	6,308.9	174.8	-2,408.2	2,412.2	2.16	-1.94	-0.97
7,611.0	90.30	266.90	6,308.7	173.4	-2,439.2	2,443.1	3.06	-0.97	-2.90
7,643.0	90.10	267.60	6,308.6	171.9	-2,471.1	2,475.0	2.28	-0.63	2.19
7,674.0	90.00	268.00	6,308.6	170.7	-2,502.1	2,506.0	1.33	-0.32	1.29
7,704.0	91.00	268.50	6,308.3	169.8	-2,532.1	2,535.9	3.73	3.33	1.67
7,736.0	91.30	268.70	6,307.7	169.0	-2,564.1	2,567.8	1.13	0.94	0.63
7,767.0	91.30	268.00	6,307.0	168.1	-2,595.1	2,598.8	2.26	0.00	-2.26
7,798.0	91.50	268.70	6,306.2	167.2	-2,626.0	2,629.7	2.35	0.65	2.26
7,828.0	91.50	269.00	6,305.4	166.6	-2,656.0	2,659.7	1.00	0.00	1.00
7,859.0	92.00	268.10	6,304.5	165.8	-2,687.0	2,690.6	3.32	1.61	-2.90
7,891.0	92.40	269.00	6,303.2	165.0	-2,719.0	2,722.6	3.08	1.25	2.81
7,922.0	92.50	269.50	6,301.9	164.6	-2,749.9	2,753.5	1.64	0.32	1.61
7,953.0	92.50	270.20	6,300.6	164.5	-2,780.9	2,784.5	2.26	0.00	2.26
7,985.0	92.80	270.40	6,299.1	164.7	-2,812.9	2,816.4	1.13	0.94	0.63
8,016.0	92.70	270.20	6,297.6	164.8	-2,843.8	2,847.4	0.72	-0.32	-0.65
8,047.0	92.20	271.50	6,296.3	165.3	-2,874.8	2,878.3	4.49	-1.61	4.19
8,077.0	92.30	271.30	6,295.1	166.0	-2,904.8	2,908.3	0.74	0.33	-0.67
8,107.0	91.90	272.20	6,294.0	166.9	-2,934.7	2,938.3	3.28	-1.33	3.00
8,139.0	90.70	270.20	6,293.3	167.6	-2,966.7	2,970.3	7.29	-3.75	-6.25
8,168.0	90.00	270.40	6,293.1	167.8	-2,995.7	2,999.3	2.51	-2.41	0.69
8,200.0	89.80	270.40	6,293.1	168.0	-3,027.7	3,031.3	0.63	-0.63	0.00
8,231.0	89.90	270.40	6,293.2	168.2	-3,058.7	3,062.3	0.32	0.32	0.00
8,262.0	89.40	270.40	6,293.4	168.4	-3,089.7	3,093.2	1.61	-1.61	0.00
8,294.0	90.30	270.60	6,293.5	168.7	-3,121.7	3,125.2	2.88	2.81	0.63
8,325.0	91.20	271.30	6,293.1	169.2	-3,152.7	3,156.2	3.68	2.90	2.26
8,356.0	90.70	271.10	6,292.6	169.9	-3,183.7	3,187.2	1.74	-1.61	-0.65
8,387.0	90.00	271.10	6,292.4	170.5	-3,214.7	3,218.2	2.26	-2.26	0.00
8,418.0	90.00	271.00	6,292.4	171.0	-3,245.7	3,249.2	0.32	0.00	-0.32
8,449.0	88.80	270.80	6,292.7	171.5	-3,276.7	3,280.2	3.92	-3.87	-0.65
8,480.0	88.40	270.60	6,293.5	171.9	-3,307.7	3,311.2	1.44	-1.29	-0.65
8,511.0	88.20	270.60	6,294.4	172.2	-3,338.7	3,342.2	0.65	-0.65	0.00
8,543.0	87.90	270.40	6,295.5	172.5	-3,370.6	3,374.2	1.13	-0.94	-0.63
8,574.0	88.60	270.40	6,296.4	172.7	-3,401.6	3,405.1	2.26	2.26	0.00
8,605.0	88.50	270.40	6,297.2	172.9	-3,432.6	3,436.1	0.32	-0.32	0.00
8,636.0	88.50	270.40	6,298.0	173.1	-3,463.6	3,467.1	0.00	0.00	0.00
8,668.0	89.50	270.20	6,298.6	173.3	-3,495.6	3,499.1	3.19	3.13	-0.63
8,699.0	89.80	270.20	6,298.8	173.4	-3,526.6	3,530.1	0.97	0.97	0.00
8,731.0	90.70	270.40	6,298.6	173.6	-3,558.6	3,562.1	2.88	2.81	0.63
8,762.0	90.80	270.10	6,298.2	173.7	-3,589.6	3,593.1	1.02	0.32	-0.97
8,793.0	91.80	270.80	6,297.5	174.0	-3,620.6	3,624.0	3.94	3.23	2.26
8,824.0	91.90	270.80	6,296.5	174.4	-3,651.6	3,655.0	0.32	0.32	0.00
8,855.0	92.20	270.10	6,295.4	174.6	-3,682.5	3,686.0	2.46	0.97	-2.26
8,887.0	90.70	270.40	6,294.6	174.8	-3,714.5	3,718.0	4.78	-4.69	0.94
8,918.0	90.80	270.80	6,294.2	175.1	-3,745.5	3,749.0	1.33	0.32	1.29
8,949.0	90.70	270.40	6,293.8	175.4	-3,776.5	3,780.0	1.33	-0.32	-1.29
8,981.0	90.70	271.50	6,293.4	176.0	-3,808.5	3,812.0	3.44	0.00	3.44
9,012.0	90.90	272.00	6,293.0	176.9	-3,839.5	3,843.0	1.74	0.65	1.61
9,044.0	90.90	273.10	6,292.5	178.3	-3,871.5	3,875.0	3.44	0.00	3.44
9,075.0	90.70	273.20	6,292.0	180.0	-3,902.4	3,905.9	0.72	-0.65	0.32
9,105.0	90.00	272.90	6,291.8	181.6	-3,932.4	3,935.9	2.54	-2.33	-1.00
9,136.0	89.60	272.50	6,292.0	183.1	-3,963.3	3,966.9	1.82	-1.29	-1.29

<b>Company:</b>	BONANZA CREEK ENERGY OPERATING	<b>Local Co-ordinate Reference:</b>	Well NORTH PLATTE X-D-35HZ
<b>Project:</b>	SEC.36-T5N-R63W	<b>TVD Reference:</b>	RKB @ 4552.0ft (KB 12' RIG 12)
<b>Site:</b>	NORTH PLATTE X-D-35HZ PAD SEC.36-5N-63W	<b>MD Reference:</b>	RKB @ 4552.0ft (KB 12' RIG 12)
<b>Well:</b>	NORTH PLATTE X-D-35HZ	<b>North Reference:</b>	True
<b>Wellbore:</b>	Wellbore #1	<b>Survey Calculation Method:</b>	Minimum Curvature
<b>Design:</b>	Wellbore #1	<b>Database:</b>	Landmark

Survey									
Measured Depth (ft)	Inclination (°)	Azimuth (°)	Vertical Depth (ft)	+N/-S (ft)	+E/-W (ft)	Vertical Section (ft)	Dogleg Rate (°/100ft)	Build Rate (°/100ft)	Turn Rate (°/100ft)
9,167.0	89.50	272.40	6,292.2	184.4	-3,994.3	3,997.9	0.46	-0.32	-0.32
9,197.0	89.30	271.80	6,292.5	185.5	-4,024.3	4,027.9	2.11	-0.67	-2.00
9,228.0	89.40	271.70	6,292.9	186.5	-4,055.3	4,058.9	0.46	0.32	-0.32
9,259.0	89.50	271.70	6,293.2	187.4	-4,086.2	4,089.9	0.32	0.32	0.00
9,290.0	89.50	271.80	6,293.4	188.3	-4,117.2	4,120.9	0.32	0.00	0.32
9,322.0	89.60	271.50	6,293.7	189.3	-4,149.2	4,152.9	0.99	0.31	-0.94
9,353.0	89.80	271.80	6,293.8	190.1	-4,180.2	4,183.9	1.16	0.65	0.97
9,384.0	89.80	271.70	6,294.0	191.1	-4,211.2	4,214.9	0.32	0.00	-0.32
9,415.0	89.90	271.50	6,294.0	192.0	-4,242.2	4,245.9	0.72	0.32	-0.65
9,446.0	89.80	271.30	6,294.1	192.7	-4,273.2	4,276.9	0.72	-0.32	-0.65
9,478.0	89.60	271.30	6,294.3	193.4	-4,305.2	4,308.9	0.63	-0.63	0.00
9,509.0	89.60	271.10	6,294.5	194.1	-4,336.1	4,339.9	0.65	0.00	-0.65
9,540.0	89.60	271.10	6,294.7	194.7	-4,367.1	4,370.9	0.00	0.00	0.00
9,571.0	89.80	271.10	6,294.9	195.3	-4,398.1	4,401.9	0.65	0.65	0.00
9,601.0	90.30	270.80	6,294.9	195.8	-4,428.1	4,431.9	1.94	1.67	-1.00
9,632.0	90.10	270.20	6,294.7	196.0	-4,459.1	4,462.9	2.04	-0.65	-1.94
9,663.0	90.20	270.80	6,294.7	196.3	-4,490.1	4,493.9	1.96	0.32	1.94
9,694.0	90.60	269.70	6,294.4	196.5	-4,521.1	4,524.9	3.78	1.29	-3.55
9,725.0	90.30	269.20	6,294.2	196.2	-4,552.1	4,555.9	1.88	-0.97	-1.61
9,756.0	90.60	269.20	6,294.0	195.7	-4,583.1	4,586.8	0.97	0.97	0.00
9,787.0	90.90	269.40	6,293.6	195.3	-4,614.1	4,617.8	1.16	0.97	0.65
9,819.0	90.90	269.20	6,293.1	195.0	-4,646.1	4,649.8	0.62	0.00	-0.63
9,850.0	91.30	269.00	6,292.5	194.5	-4,677.1	4,680.7	1.44	1.29	-0.65
9,878.0	91.30	268.80	6,291.8	193.9	-4,705.1	4,708.7	0.71	0.00	-0.71
9,909.0	91.70	268.80	6,291.0	193.3	-4,736.1	4,739.6	1.29	1.29	0.00
9,941.0	91.70	268.70	6,290.1	192.6	-4,768.0	4,771.6	0.31	0.00	-0.31
9,972.0	92.20	268.10	6,289.0	191.7	-4,799.0	4,802.5	2.52	1.61	-1.94
10,003.0	91.50	268.50	6,288.0	190.8	-4,830.0	4,833.5	2.60	-2.26	1.29
10,035.0	91.60	268.70	6,287.1	190.0	-4,862.0	4,865.4	0.70	0.31	0.63
10,066.0	91.40	269.00	6,286.3	189.4	-4,892.9	4,896.3	1.16	-0.65	0.97
10,097.0	91.40	268.80	6,285.6	188.8	-4,923.9	4,927.3	0.64	0.00	-0.65
10,129.0	90.70	269.00	6,285.0	188.2	-4,955.9	4,959.3	2.28	-2.19	0.63
10,160.0	90.40	268.80	6,284.7	187.6	-4,986.9	4,990.2	1.16	-0.97	-0.65
10,192.0	90.30	268.70	6,284.5	186.9	-5,018.9	5,022.2	0.44	-0.31	-0.31
10,223.0	90.50	268.50	6,284.3	186.1	-5,049.9	5,053.1	0.91	0.65	-0.65
10,254.0	90.70	268.30	6,284.0	185.3	-5,080.9	5,084.1	0.91	0.65	-0.65
10,285.0	90.70	268.30	6,283.6	184.3	-5,111.9	5,115.0	0.00	0.00	0.00
10,317.0	91.10	268.30	6,283.1	183.4	-5,143.8	5,147.0	1.25	1.25	0.00
10,347.0	90.80	268.30	6,282.6	182.5	-5,173.8	5,176.9	1.00	-1.00	0.00
10,378.0	90.70	267.80	6,282.2	181.5	-5,204.8	5,207.9	1.64	-0.32	-1.61
10,410.0	90.80	267.60	6,281.7	180.2	-5,236.8	5,239.8	0.70	0.31	-0.63
10,441.0	90.70	267.60	6,281.3	178.9	-5,267.8	5,270.7	0.32	-0.32	0.00
10,472.0	90.50	267.60	6,281.0	177.6	-5,298.7	5,301.6	0.65	-0.65	0.00
10,503.0	90.70	267.30	6,280.7	176.2	-5,329.7	5,332.5	1.16	0.65	-0.97
10,534.0	90.70	267.60	6,280.3	174.8	-5,360.7	5,363.5	0.97	0.00	0.97
10,565.0	90.40	266.90	6,280.0	173.3	-5,391.6	5,394.4	2.46	-0.97	-2.26
10,596.0	90.60	266.70	6,279.7	171.6	-5,422.6	5,425.3	0.91	0.65	-0.65
10,628.0	90.60	266.40	6,279.4	169.7	-5,454.5	5,457.1	0.94	0.00	-0.94
10,659.0	90.30	266.00	6,279.2	167.6	-5,485.4	5,488.0	1.61	-0.97	-1.29
10,691.0	90.70	266.00	6,278.9	165.4	-5,517.4	5,519.8	1.25	1.25	0.00
10,721.0	91.10	265.90	6,278.4	163.3	-5,547.3	5,549.7	1.37	1.33	-0.33
10,752.0	91.10	265.90	6,277.8	161.1	-5,578.2	5,580.5	0.00	0.00	0.00
10,783.0	91.00	265.90	6,277.3	158.8	-5,609.1	5,611.4	0.32	-0.32	0.00



<b>Company:</b>	BONANZA CREEK ENERGY OPERATING	<b>Local Co-ordinate Reference:</b>	Well NORTH PLATTE X-D-35HZ
<b>Project:</b>	SEC.36-T5N-R63W	<b>TVD Reference:</b>	RKB @ 4552.0ft (KB 12' RIG 12)
<b>Site:</b>	NORTH PLATTE X-D-35HZ PAD SEC.36-5N-63W	<b>MD Reference:</b>	RKB @ 4552.0ft (KB 12' RIG 12)
<b>Well:</b>	NORTH PLATTE X-D-35HZ	<b>North Reference:</b>	True
<b>Wellbore:</b>	Wellbore #1	<b>Survey Calculation Method:</b>	Minimum Curvature
<b>Design:</b>	Wellbore #1	<b>Database:</b>	Landmark

Survey										
Measured Depth (ft)	Inclination (°)	Azimuth (°)	Vertical Depth (ft)	+N/-S (ft)	+E/-W (ft)	Vertical Section (ft)	Dogleg Rate (°/100ft)	Build Rate (°/100ft)	Turn Rate (°/100ft)	
10,814.0	91.20	265.50	6,276.7	156.5	-5,640.0	5,642.2	1.44	0.65	-1.29	
10,845.0	91.00	265.20	6,276.1	154.0	-5,670.9	5,673.0	1.16	-0.65	-0.97	
10,877.0	90.80	264.40	6,275.6	151.1	-5,702.8	5,704.8	2.58	-0.63	-2.50	
10,908.0	90.70	264.10	6,275.2	148.0	-5,733.6	5,735.5	1.02	-0.32	-0.97	
10,960.0	90.70	264.10	6,274.5	142.6	-5,785.3	5,787.1	0.00	0.00	0.00	
BHL 1320'FSL & 460'FWL										

Wellbore Targets										
Target Name	Dip Angle (°)	Dip Dir. (°)	TVD (ft)	+N/-S (ft)	+E/-W (ft)	Northing (ft)	Easting (ft)	Latitude	Longitude	
- hit/miss target										
- Shape										
HARDLINE BH	0.00	0.00	-1.0	-303.6	-5,805.0	1,372,626.27	3,303,503.95	40.351145	-104.411017	
- survey misses target center by 5812.9ft at 0.0ft MD (0.0 TVD, 0.0 N, 0.0 E)										
- Polygon										
Point 1			-1.0	0.0	0.0	1,372,626.27	3,303,503.95			
Point 2			-1.0	1,000.0	0.0	1,373,626.14	3,303,491.44			
SHL 1090'FSL & 1090'FWL	0.00	0.00	-2.0	-3.6	0.0	1,372,998.88	3,309,304.49	40.351970	-104.390190	
- survey misses target center by 4.1ft at 0.0ft MD (0.0 TVD, 0.0 N, 0.0 E)										
- Point										
HARDLINE 460'FNL	0.00	0.00	-3.0	-1,552.8	-500.0	1,371,443.66	3,308,823.94	40.347718	-104.391984	
- survey misses target center by 1631.3ft at 0.0ft MD (0.0 TVD, 0.0 N, 0.0 E)										
- Polygon										
Point 1			-3.0	0.0	0.0	1,371,443.66	3,308,823.94			
Point 2			-3.0	0.0	1,000.0	1,371,456.17	3,309,823.81			
Point 3			-3.0	0.0	0.0	1,371,443.66	3,308,823.94			
T1 1320'FSL & 460'FE	0.00	0.00	6,335.0	211.4	-1,549.7	1,373,194.45	3,307,752.32	40.352560	-104.395750	
- survey misses target center by 15.9ft at 6721.5ft MD (6325.3 TVD, 198.8 N, -1550.8 E)										
- Point										
BHL 1320'FSL & 460'FWL	0.00	0.00	6,335.0	164.6	-5,805.7	1,373,094.46	3,303,497.40	40.352430	-104.411020	
- survey misses target center by 67.5ft at 10960.0ft MD (6274.5 TVD, 142.6 N, -5785.3 E)										
- Point										

Checked By: _____	Approved By: _____	Date: _____
-------------------	--------------------	-------------