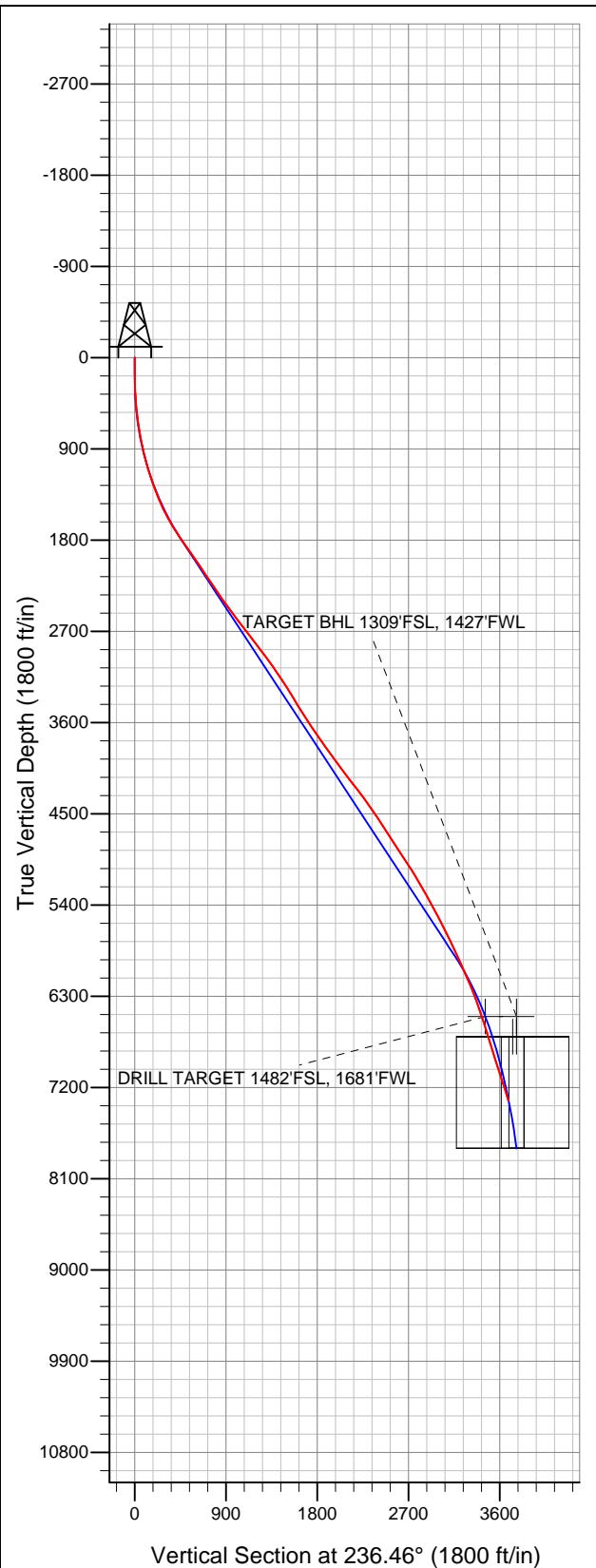


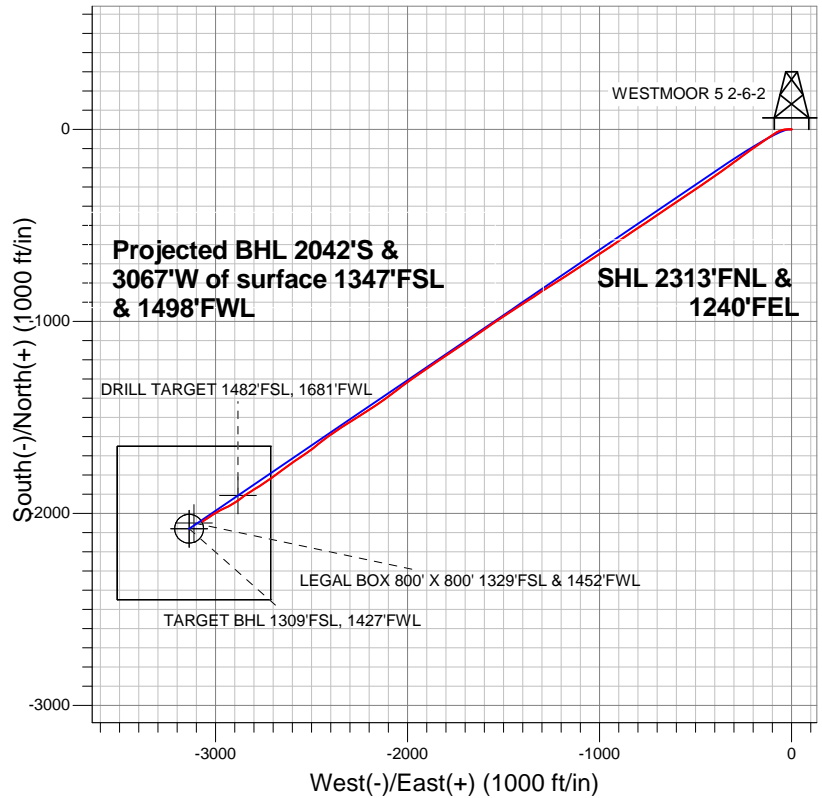
**Well Name: WESTMOOR 5 2-6-2**

Surface Location: Bestway Pad Sec.2-T5N-R66W  
North American Datum 1983 US State Plane 1983Colorado Northern Zone  
Ground Elevation: 4701.0

+N/-S	+E/-W	Northing	Easting	Latitude	Longitude	Slot
0.0	0.0	1400776.14	3211721.47	40.431040	-104.739450	
Original Well Elev		WELL @ 4714.0ft (Original Well Elev)				



**Mineral Resources Inc**



- LEGEND**
- Wellbore #1
  - WESTMOOR 5 2-6-2, Wellbore #1, Plan #2 (4-25-12) V0
  - Survey #1

**Final Survey Plot**

Projected Final Survey -  
8338'MD & 7331'TVD @ 3685'VS  
16.10deg Inc 235.80 deg AZ

Project: SEC.2-T5N-R66W  
Site: Bestway Pad Sec.2-T5N-R66W  
Well: WESTMOOR 5 2-6-2  
Plan: Wellbore #1



## **Mineral Resources Inc**

**SEC.2-T5N-R66W**

**Bestway Pad Sec.2-T5N-R66W**

**WESTMOOR 5 2-6-2**

**Wellbore #1**

**Survey: Survey #1**

## **Standard Survey Report**

**07 June, 2012**

<b>Company:</b>	Mineral Resources Inc	<b>Local Co-ordinate Reference:</b>	Well WESTMOOR 5 2-6-2
<b>Project:</b>	SEC.2-T5N-R66W	<b>TVD Reference:</b>	WELL @ 4714.0ft (Original Well Elev)
<b>Site:</b>	Bestway Pad Sec.2-T5N-R66W	<b>MD Reference:</b>	WELL @ 4714.0ft (Original Well Elev)
<b>Well:</b>	WESTMOOR 5 2-6-2	<b>North Reference:</b>	True
<b>Wellbore:</b>	Wellbore #1	<b>Survey Calculation Method:</b>	Minimum Curvature
<b>Design:</b>	Wellbore #1	<b>Database:</b>	Landmark

<b>Project</b>	SEC.2-T5N-R66W, Weld County, Colorado		
<b>Map System:</b>	US State Plane 1983	<b>System Datum:</b>	Mean Sea Level
<b>Geo Datum:</b>	North American Datum 1983		Using Well Reference Point
<b>Map Zone:</b>	Colorado Northern Zone		Using geodetic scale factor

Site		Bestway Pad Sec.2-T5N-R66W			
Site Position:		Northing:	1,400,962.35 ft	Latitude:	40.431550
From:	Lat/Long	Easting:	3,211,767.20 ft	Longitude:	-104.739280
Position Uncertainty:	0.0 ft	Slot Radius:	"	Grid Convergence:	0.49 °

Well	WESTMOOR 5 2-6-2					
Well Position	+N/-S	0.0 ft	Northing:	1,400,776.14 ft	Latitude:	40.431040
	+E/-W	0.0 ft	Easting:	3,211,721.47 ft	Longitude:	-104.739450
Position Uncertainty		0.0 ft	Wellhead Elevation:	ft	Ground Level:	4,701.0 ft

Wellbore	Wellbore #1				
Magnetics	Model Name	Sample Date	Declination (°)	Dip Angle (°)	Field Strength (nT)
	IGRF2010	4/30/2012	8.74	67.05	53,059

Design	Wellbore #1			
Audit Notes:				
Version:	1.0	Phase:	ACTUAL	Tie On Depth: 0.0
Vertical Section:	Depth From (TVD) (ft)	+N/-S (ft)	+E/-W (ft)	Direction (°)
	6,500.0	0.0	0.0	236.46

Survey Program		Date	6/7/2012		
From (ft)	To (ft)	Survey (Wellbore)	Tool Name	Description	
124.0	8,338.0	Survey #1 (Wellbore #1)	MWD	MWD - Standard	

Survey									
Measured Depth (ft)	Inclination (°)	Azimuth (°)	Vertical Depth (ft)	+N/-S (ft)	+E/-W (ft)	Vertical Section (ft)	Dogleg Rate (°/100ft)	Build Rate (°/100ft)	Turn Rate (°/100ft)
0.0	0.00	0.00	0.0	0.0	0.0	0.0	0.00	0.00	0.00
124.0	0.30	120.50	124.0	-0.2	0.3	-0.1	0.24	0.24	0.00
216.0	0.90	260.80	216.0	-0.4	-0.2	0.4	1.25	0.65	152.50
308.0	2.70	269.80	307.9	-0.5	-3.1	2.9	1.97	1.96	9.78
435.0	5.30	270.70	434.6	-0.5	-12.0	10.2	2.05	2.05	0.71
480.0	6.00	270.70	479.4	-0.4	-16.4	13.9	1.56	1.56	0.00
525.0	6.60	271.40	524.1	-0.3	-21.3	18.0	1.34	1.33	1.56
617.0	9.00	264.90	615.3	-0.8	-33.8	28.6	2.78	2.61	-7.07
710.0	10.50	254.80	706.9	-3.7	-49.2	43.1	2.44	1.61	-10.86
803.0	11.30	246.70	798.3	-9.5	-65.8	60.1	1.86	0.86	-8.71
896.0	12.40	238.50	889.3	-18.3	-82.6	79.0	2.16	1.18	-8.82
988.0	13.90	235.50	978.9	-29.8	-100.2	99.9	1.79	1.63	-3.26
1,080.0	15.90	235.10	1,067.8	-43.2	-119.6	123.6	2.18	2.17	-0.43

<b>Company:</b>	Mineral Resources Inc	<b>Local Co-ordinate Reference:</b>	Well WESTMOOR 5 2-6-2
<b>Project:</b>	SEC.2-T5N-R66W	<b>TVD Reference:</b>	WELL @ 4714.0ft (Original Well Elev)
<b>Site:</b>	Bestway Pad Sec.2-T5N-R66W	<b>MD Reference:</b>	WELL @ 4714.0ft (Original Well Elev)
<b>Well:</b>	WESTMOOR 5 2-6-2	<b>North Reference:</b>	True
<b>Wellbore:</b>	Wellbore #1	<b>Survey Calculation Method:</b>	Minimum Curvature
<b>Design:</b>	Wellbore #1	<b>Database:</b>	Landmark

Survey										
Measured Depth (ft)	Inclination (°)	Azimuth (°)	Vertical Depth (ft)	+N/-S (ft)	+E/-W (ft)	Vertical Section (ft)	Dogleg Rate (°/100ft)	Build Rate (°/100ft)	Turn Rate (°/100ft)	
1,173.0	16.90	236.40	1,157.0	-58.0	-141.3	149.8	1.15	1.08	1.40	
1,266.0	19.30	235.30	1,245.4	-74.2	-165.2	178.7	2.61	2.58	-1.18	
1,359.0	22.30	235.30	1,332.3	-93.0	-192.4	211.7	3.23	3.23	0.00	
1,451.0	23.70	235.10	1,417.0	-113.6	-221.9	247.7	1.52	1.52	-0.22	
1,544.0	25.40	233.00	1,501.6	-136.3	-253.1	286.3	2.05	1.83	-2.26	
1,637.0	28.50	233.40	1,584.5	-161.5	-286.9	328.4	3.34	3.33	0.43	
1,730.0	31.80	234.60	1,664.9	-188.9	-324.7	375.0	3.61	3.55	1.29	
1,823.0	34.00	234.40	1,743.0	-218.3	-365.8	425.5	2.37	2.37	-0.22	
1,916.0	34.70	234.40	1,819.7	-248.8	-408.5	477.9	0.75	0.75	0.00	
2,009.0	35.00	235.30	1,896.1	-279.4	-451.9	531.1	0.64	0.32	0.97	
2,102.0	34.10	235.50	1,972.7	-309.3	-495.3	583.8	0.98	-0.97	0.22	
2,196.0	34.30	236.70	2,050.4	-338.8	-539.2	636.6	0.75	0.21	1.28	
2,289.0	34.70	236.60	2,127.1	-367.8	-583.2	689.3	0.43	0.43	-0.11	
2,381.0	34.50	236.00	2,202.8	-396.8	-626.7	741.5	0.43	-0.22	-0.65	
2,474.0	33.60	236.00	2,279.8	-425.9	-669.8	793.6	0.97	-0.97	0.00	
2,567.0	34.30	234.80	2,357.0	-455.4	-712.6	845.5	1.04	0.75	-1.29	
2,660.0	35.80	236.20	2,433.1	-485.6	-756.6	898.9	1.83	1.61	1.51	
2,753.0	36.40	237.30	2,508.3	-515.6	-802.4	953.7	0.95	0.65	1.18	
2,845.0	37.20	236.00	2,581.9	-545.9	-848.5	1,008.8	1.21	0.87	-1.41	
2,938.0	37.80	235.30	2,655.7	-577.9	-895.2	1,065.4	0.79	0.65	-0.75	
3,031.0	38.30	235.00	2,728.9	-610.7	-942.2	1,122.7	0.57	0.54	-0.32	
3,124.0	36.90	235.80	2,802.6	-642.9	-988.9	1,179.5	1.59	-1.51	0.86	
3,218.0	36.80	237.40	2,877.9	-673.9	-1,036.0	1,235.9	1.03	-0.11	1.70	
3,311.0	37.40	237.80	2,952.0	-704.0	-1,083.4	1,291.9	0.70	0.65	0.43	
3,403.0	35.70	237.30	3,025.9	-733.4	-1,129.6	1,346.7	1.88	-1.85	-0.54	
3,496.0	33.60	237.10	3,102.4	-762.0	-1,174.0	1,399.6	2.26	-2.26	-0.22	
3,590.0	33.40	236.90	3,180.8	-790.3	-1,217.6	1,451.5	0.24	-0.21	-0.21	
3,683.0	33.20	237.80	3,258.5	-817.8	-1,260.5	1,502.5	0.57	-0.22	0.97	
3,776.0	31.60	236.20	3,337.1	-844.9	-1,302.3	1,552.3	1.95	-1.72	-1.72	
3,869.0	31.20	236.60	3,416.4	-871.7	-1,342.7	1,600.8	0.48	-0.43	0.43	
3,961.0	32.00	237.60	3,494.8	-897.9	-1,383.2	1,649.0	1.04	0.87	1.09	
4,054.0	32.40	236.90	3,573.5	-924.7	-1,424.9	1,698.5	0.59	0.43	-0.75	
4,147.0	33.80	236.90	3,651.4	-952.5	-1,467.4	1,749.3	1.51	1.51	0.00	
4,240.0	34.50	236.40	3,728.4	-981.2	-1,511.0	1,801.5	0.81	0.75	-0.54	
4,332.0	35.30	235.70	3,803.8	-1,010.6	-1,554.7	1,854.2	0.97	0.87	-0.76	
4,425.0	35.70	235.30	3,879.5	-1,041.2	-1,599.2	1,908.2	0.50	0.43	-0.43	
4,517.0	36.80	235.10	3,953.7	-1,072.2	-1,643.8	1,962.6	1.20	1.20	-0.22	
4,610.0	37.20	235.70	4,028.0	-1,104.0	-1,689.9	2,018.5	0.58	0.43	0.65	
4,703.0	36.10	235.80	4,102.6	-1,135.2	-1,735.8	2,074.0	1.18	-1.18	0.11	
4,796.0	37.50	236.60	4,177.1	-1,166.2	-1,782.1	2,129.7	1.59	1.51	0.86	
4,888.0	37.20	236.40	4,250.2	-1,197.0	-1,828.6	2,185.5	0.35	-0.33	-0.22	
4,981.0	35.90	235.10	4,324.9	-1,228.2	-1,874.4	2,240.9	1.63	-1.40	-1.40	
5,076.0	36.50	235.00	4,401.6	-1,260.3	-1,920.4	2,297.0	0.63	0.63	-0.11	
5,171.0	35.70	234.40	4,478.3	-1,292.7	-1,966.1	2,353.0	0.92	-0.84	-0.63	
5,265.0	33.90	234.30	4,555.5	-1,323.9	-2,009.7	2,406.6	1.92	-1.91	-0.11	
5,360.0	32.70	232.50	4,634.9	-1,355.0	-2,051.6	2,458.6	1.64	-1.26	-1.89	
5,454.0	32.20	233.00	4,714.3	-1,385.5	-2,091.7	2,509.0	0.60	-0.53	0.53	
5,549.0	32.40	234.40	4,794.6	-1,415.6	-2,132.6	2,559.7	0.82	0.21	1.47	
5,643.0	33.60	237.10	4,873.4	-1,444.4	-2,174.9	2,610.9	2.02	1.28	2.87	
5,736.0	33.50	237.10	4,950.9	-1,472.3	-2,218.1	2,662.2	0.11	-0.11	0.00	
5,829.0	32.80	238.10	5,028.8	-1,499.5	-2,261.0	2,713.1	0.96	-0.75	1.08	
5,922.0	30.80	238.50	5,107.8	-1,525.3	-2,302.7	2,762.1	2.16	-2.15	0.43	
6,015.0	30.10	237.30	5,188.0	-1,550.3	-2,342.6	2,809.2	1.00	-0.75	-1.29	
6,108.0	30.00	233.70	5,268.5	-1,576.7	-2,381.0	2,855.7	1.94	-0.11	-3.87	

<b>Company:</b>	Mineral Resources Inc	<b>Local Co-ordinate Reference:</b>	Well WESTMOOR 5 2-6-2
<b>Project:</b>	SEC.2-T5N-R66W	<b>TVD Reference:</b>	WELL @ 4714.0ft (Original Well Elev)
<b>Site:</b>	Bestway Pad Sec.2-T5N-R66W	<b>MD Reference:</b>	WELL @ 4714.0ft (Original Well Elev)
<b>Well:</b>	WESTMOOR 5 2-6-2	<b>North Reference:</b>	True
<b>Wellbore:</b>	Wellbore #1	<b>Survey Calculation Method:</b>	Minimum Curvature
<b>Design:</b>	Wellbore #1	<b>Database:</b>	Landmark

Survey									
Measured Depth (ft)	Inclination (°)	Azimuth (°)	Vertical Depth (ft)	+N/-S (ft)	+E/-W (ft)	Vertical Section (ft)	Dogleg Rate (°/100ft)	Build Rate (°/100ft)	Turn Rate (°/100ft)
6,201.0	28.90	232.90	5,349.5	-1,604.0	-2,417.7	2,901.4	1.26	-1.18	-0.86
6,293.0	28.30	232.30	5,430.2	-1,630.8	-2,452.7	2,945.3	0.72	-0.65	-0.65
6,386.0	28.70	232.50	5,512.0	-1,657.8	-2,487.8	2,989.6	0.44	0.43	0.22
6,478.0	26.70	235.10	5,593.4	-1,683.1	-2,522.3	3,032.3	2.54	-2.17	2.83
6,571.0	26.30	235.80	5,676.7	-1,706.7	-2,556.5	3,073.8	0.55	-0.43	0.75
6,664.0	25.60	236.20	5,760.3	-1,729.4	-2,590.2	3,114.5	0.78	-0.75	0.43
6,757.0	25.00	234.30	5,844.4	-1,752.1	-2,622.9	3,154.2	1.09	-0.65	-2.04
6,849.0	24.60	232.90	5,927.9	-1,775.0	-2,653.9	3,192.7	0.77	-0.43	-1.52
6,942.0	24.30	232.50	6,012.5	-1,798.3	-2,684.5	3,231.2	0.37	-0.32	-0.43
7,035.0	23.60	234.80	6,097.5	-1,820.7	-2,714.9	3,268.9	1.25	-0.75	2.47
7,128.0	23.00	238.30	6,182.9	-1,840.9	-2,745.6	3,305.6	1.62	-0.65	3.76
7,221.0	21.70	238.00	6,269.0	-1,859.6	-2,775.6	3,341.0	1.40	-1.40	-0.32
7,315.0	20.00	235.80	6,356.8	-1,877.8	-2,803.7	3,374.4	1.99	-1.81	-2.34
7,408.0	18.40	236.90	6,444.6	-1,894.8	-2,829.1	3,405.0	1.76	-1.72	1.18
7,476.5	17.35	235.22	6,509.8	-1,906.5	-2,846.6	3,426.0	1.70	-1.53	-2.45
<b>DRILL TARGET 1482'FSL, 1681'FWL</b>									
7,500.0	17.00	234.60	6,532.3	-1,910.5	-2,852.3	3,433.0	1.70	-1.51	-2.65
7,565.6	16.93	234.25	6,595.0	-1,921.7	-2,867.8	3,452.1	0.19	-0.11	-0.53
<b>TARGET BHL 1309'FSL, 1427'FWL</b>									
7,594.0	16.90	234.10	6,622.2	-1,926.5	-2,874.5	3,460.4	0.19	-0.11	-0.53
7,687.0	17.80	237.30	6,711.0	-1,942.1	-2,897.4	3,488.1	1.41	0.97	3.44
7,751.0	18.21	238.97	6,771.9	-1,952.6	-2,914.3	3,507.9	1.03	0.64	2.61
<b>LEGAL BOX 800' X 800' 1329'FSL &amp; 1452'FWL</b>									
7,762.6	18.29	239.26	6,782.9	-1,954.4	-2,917.4	3,511.5	1.03	0.65	2.54
<b>TARGET CIRCLE 1309'FSL, 1427'FWL</b>									
7,780.0	18.40	239.70	6,799.4	-1,957.2	-2,922.1	3,516.9	1.03	0.66	2.51
7,872.0	18.10	244.60	6,886.7	-1,970.6	-2,947.5	3,545.6	1.70	-0.33	5.33
7,965.0	17.20	243.90	6,975.4	-1,982.9	-2,972.9	3,573.5	0.99	-0.97	-0.75
8,058.0	17.70	238.50	7,064.1	-1,996.3	-2,997.3	3,601.3	1.82	0.54	-5.81
8,151.0	18.50	236.40	7,152.5	-2,011.9	-3,021.7	3,630.2	1.11	0.86	-2.26
8,244.0	16.90	236.60	7,241.1	-2,027.5	-3,045.3	3,658.4	1.72	-1.72	0.22
8,296.0	16.10	235.80	7,290.9	-2,035.7	-3,057.5	3,673.2	1.60	-1.54	-1.54
8,338.0	16.10	235.80	7,331.3	-2,042.3	-3,067.2	3,684.9	0.00	0.00	0.00

Checked By: _____	Approved By: _____	Date: _____
-------------------	--------------------	-------------