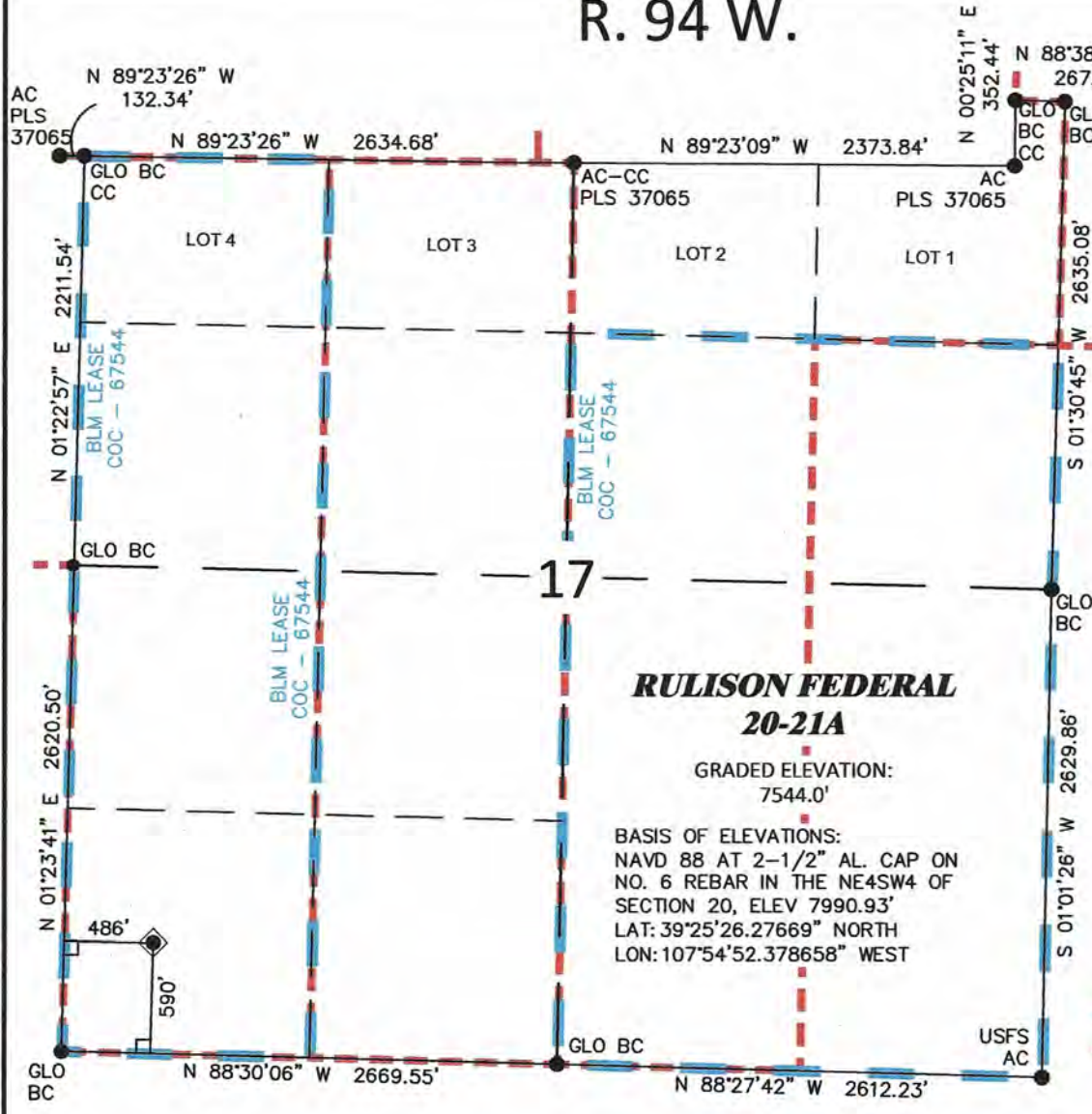


R. 94 W.



SCALE: 1"=1000'
0' 250' 500' 1000'

T. 7 S.

SURFACE HOLE LOCATION

SHL LATITUDE(NAD 83)
NORTH 39.433358 DEG.
SHL LONGITUDE(NAD 83)
WEST 107.917756 DEG.
SHL COLORADO CENTRAL
ZONE (NAD83)
NORTHING
1591816.89 FT.
EASTING
2317181.47 FT.

**RULISON FEDERAL
20-21A**

GRADED ELEVATION:
7544.0'

BASIS OF ELEVATIONS:
NAVD 88 AT 2-1/2" AL. CAP ON
NO. 6 REBAR IN THE NE4SW4 OF
SECTION 20, ELEV 7990.93'
LAT: 39°25'26.27669" NORTH
LON: 107°54'52.378658" WEST

LEGEND

- ◆ SURFACE HOLE LOCATION
- CALCULATED CORNER
- FOUND CORNER MONUMENT, AS NOTED
- LEASE LINE
- - - PROPERTY LINE

SURVEYOR'S STATEMENT

I, Ronald C. Renneke, an employee and agent for William H. Smith & Associates P.C., Inc. state the plat hereon is a representation of a field survey made under my authority of the shown RULISON FEDERAL 20-21A surface hole location, being staked on the ground as shown hereon on June 18, 2012.

NOTES

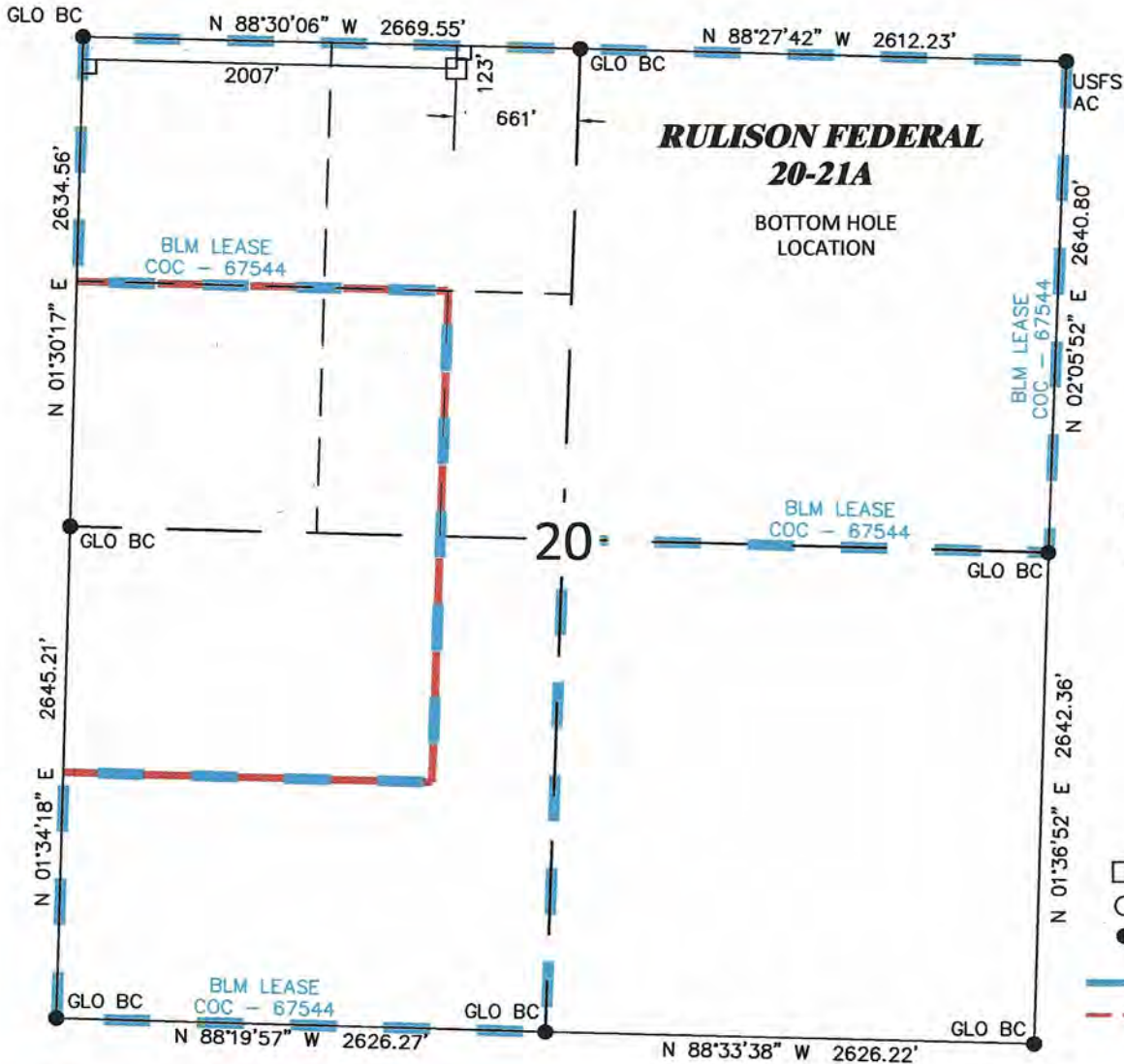
- (1.) Basis of Datum is the Colorado State Plane Coordinate System, Central Zone, NAD83 (horizontal) & NAVD88 (vertical) derived from OPUS solution.
- (2.) The Basis of Bearings for this survey is referenced to the south line of the SW4 of Section 17 monumented with USGLO brass caps dated 1911 and bearing N 88°30'06" W.
- (3.) Current land use is native, non-crop & rangeland.
- (4.) Improvements exist within 400' radius, see exhibit 2 for details.
- (5.) GPS operator Ron Rennke, observed PDOP 1.6
- (6.) All GPS observations for the shown well location are in compliance with COGCC rule no. 215.



Notice: In accordance with Colorado State Law, any legal action based upon any defect in this survey plat must commence within three (3) years after first discovery of such defect. In no event may any action based upon any defect in this survey plat be commenced more than ten (10) years from the date of certification shown hereon.

	<p>WILLIAM H. SMITH & ASSOCIATES P.C. SURVEYING CONSULTANTS 550 EAST SECOND NORTH PHONE: 307-875-3638 GREEN RIVER, WY 307-875-3639 www.whsmithpc.com</p>	<p>PLAT OF DRILLING LOCATION FOR NOBLE ENERGY, INC RULISON FEDERAL 20-21A - SW4SW4 SECTION 17 590' F/SL & 486' F/WL, SECTION 17 T. 7 S., R. 94 W., 6TH P.M. GARFIELD COUNTY, COLORADO</p>
	<p>JOB NO: 2011900.004 DATE DRAWN - BY: 6/18/12 - rcr REVISIONS: SCALE: 1" = 1000' EXHIBIT 1 PAGE 1 OF 1</p>	

R. 94 W.



SCALE: 1"=1000'
0' 250' 500' 1000'

T. 7 S.

BOTTOM HOLE LOCATION

BHL LATITUDE(NAD 83)
NORTH 39.431400 DEG.
BHL LONGITUDE(NAD 83)
WEST 107.912364 DEG.
BHL COLORADO CENTRAL
ZONE (NAD83)
NORTHING
1591064 FT.
EASTING
2318685 FT.

LEGEND

- BOTTOM HOLE LOCATION
- CALCULATED CORNER
- FOUND CORNER
MONUMENT, AS NOTED
- LEASE LINE
- PROPERTY LINE

SURVEYOR'S STATEMENT

I, Ronald C. Rennke, an employee and agent for William H. Smith & Associates P.C., Inc. state the plat hereon is a representation of a field survey made under my authority of the shown RULISON FEDERAL 20-21A bottom hole location.

NOTES

- (1.) Basis of Datum is the Colorado State Plane Coordinate System, Central Zone, NAD83 (horizontal) & NAVD88 (vertical) derived from OPUS solution.
- (2.) The Basis of Bearings for this survey is referenced to the south line of the SW4 of Section 17 monumented with USGLO brass caps dated 1911 and bearing N 88°30'06" W.
- (3.) Current land use is native, non-crop & rangeland.
- (4.) Improvements exist within 400' radius, see exhibit 2 for details.
- (5.) GPS operator Ron Rennke, observed PDOP 1.6
- (6.) All GPS observations for the shown well location are in compliance with COGCC rule no. 215.



Notice: In accordance with Colorado State Law, any legal action based upon any defect in this survey plat must commence within three (3) years after first discovery of such defect. In no event may any action based upon any defect in this survey plat be commenced more than ten (10) years from the date of certification shown hereon.



WILLIAM H. SMITH & ASSOCIATES P.C.
SURVEYING CONSULTANTS

550 EAST SECOND NORTH PHONE: 307-875-3638
GREEN RIVER, WY 307-875-3639

www.whsmithpc.com

**PLAT OF BOTTOM HOLE LOCATION
FOR NOBLE ENERGY, INC
RULISON FEDERAL 20-21A - NE4NW4 SECTION 20
123' F/NL & 2007' F/WL, SECTION 20
T. 7 S., R. 94 W., 6TH P.M.
GARFIELD COUNTY, COLORADO**

JOB NO: 2011900.004

REVISIONS:

DATE DRAWN - BY: 6/18/12 - rcr

SCALE: 1" = 1000'

EXHIBIT 1

PAGE 1 OF 1