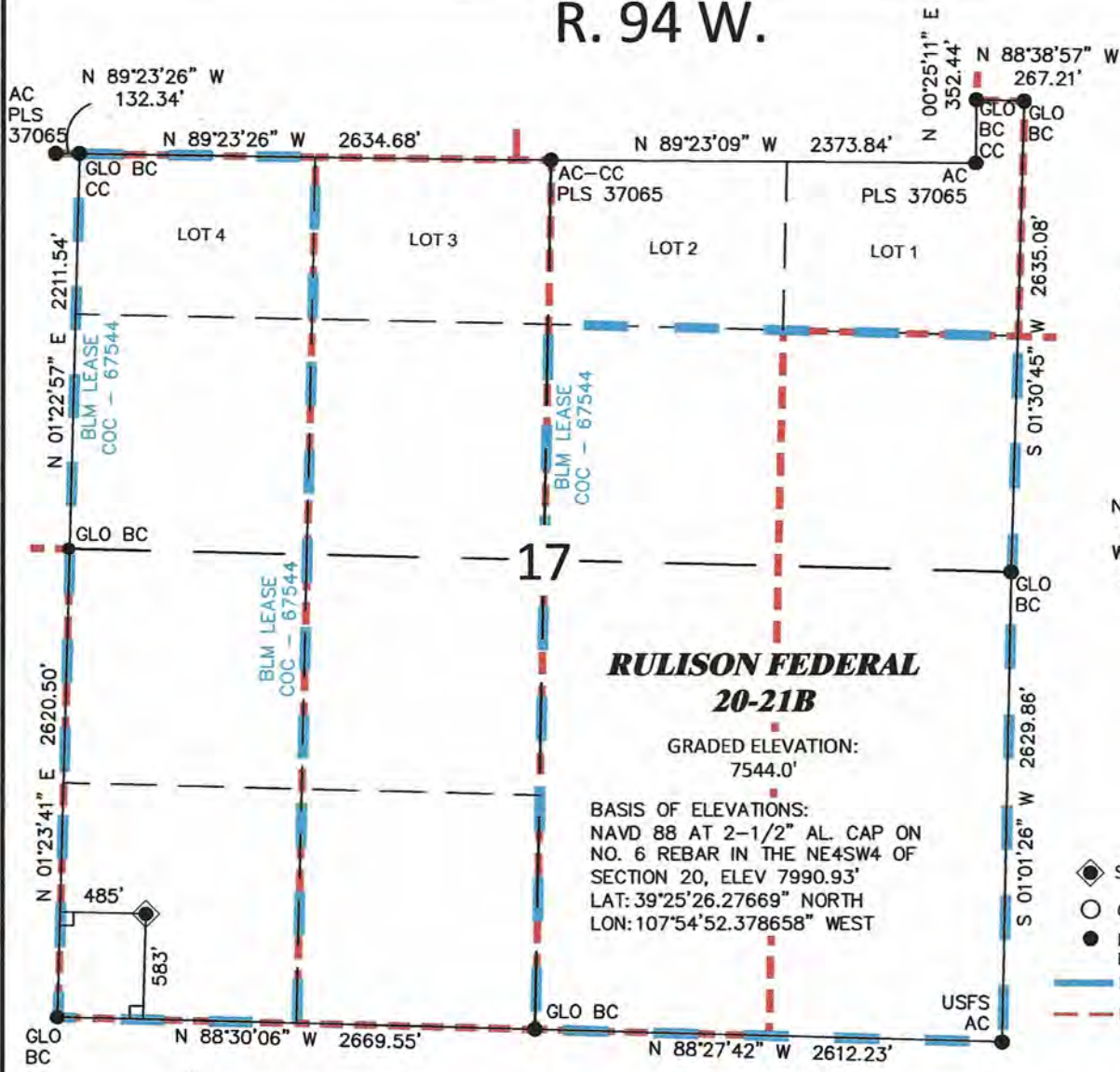


R. 94 W.



SCALE: 1"=1000'

0' 250' 500' 1000'

T. 7 S.

SURFACE HOLE LOCATION

SHL LATITUDE(NAD 83)
NORTH 39.433337 DEG.
SHL LONGITUDE(NAD 83)
WEST 107.917756 DEG.
SHL COLORADO CENTRAL
ZONE (NAD83)
NORTHING
1591809.40 FT.
EASTING
2317181.18 FT.

LEGEND

- ◆ SURFACE HOLE LOCATION
- CALCULATED CORNER
- FOUND CORNER MONUMENT, AS NOTED
- LEASE LINE
- - - PROPERTY LINE

SURVEYOR'S STATEMENT

I, Ronald C. Rennke, an employee and agent for William H. Smith & Associates P.C., Inc. state the plat hereon is a representation of a field survey made under my authority of the shown RULISON FEDERAL 20-21B surface hole location, being staked on the ground as shown hereon on June 18, 2012.

NOTES

- (1.)Basis of Datum is the Colorado State Plane Coordinate System, Central Zone, NAD83 (horizontal) & NAVD88 (vertical) derived from OPUS solution.
- (2.) The Basis of Bearings for this survey is referenced to the south line of the SW4 of Section 17 monumented with USGLO brass caps dated 1911 and bearing N 88°30'06" W.
- (3.) Current land use is native, non-crop & rangeland.
- (4.) Improvements exist within 400' radius, see exhibit 2 for details.
- (5.) GPS operator Ron Rennke, observed PDOP 1.6
- (6.) All GPS observations for the shown well location are in compliance with COGCC rule no. 215.



Notice: In accordance with Colorado State Law, any legal action based upon any defect in this survey plat must commence within three (3) years after first discovery of such defect. In no event may any action based upon any defect in this survey plat be commenced more than ten (10) years from the date of certification shown hereon.

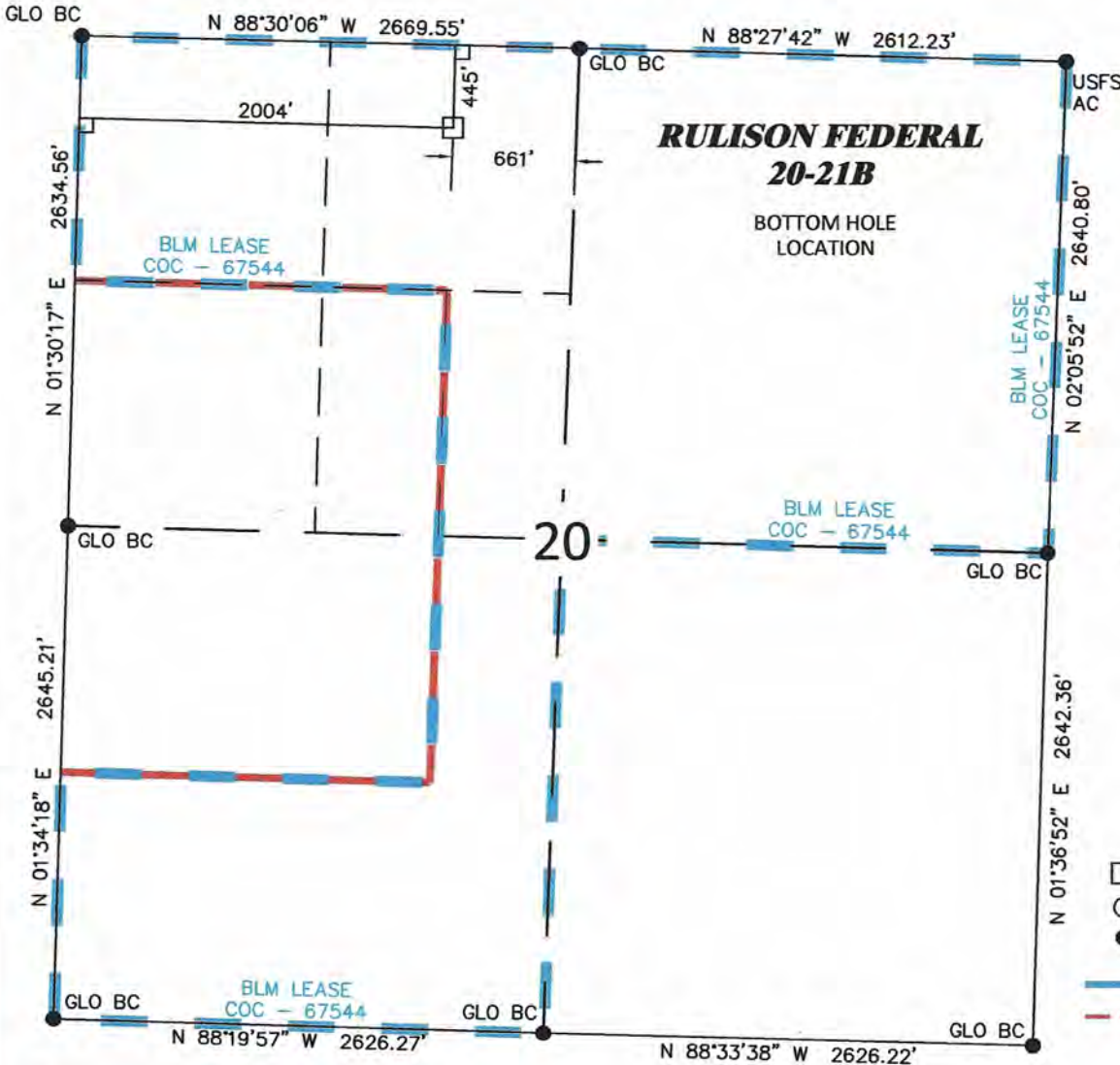


WILLIAM H. SMITH & ASSOCIATES P.C.
SURVEYING CONSULTANTS
550 EAST SECOND NORTH PHONE: 307-875-3638
GREEN RIVER, WY 307-875-3639
www.whsmithpc.com

PLAT OF DRILLING LOCATION
FOR NOBLE ENERGY, INC
RULISON FEDERAL 20-21B - SW4SW4 SECTION 17
583' F/SL & 485' F/WL, SECTION 17
T. 7 S., R. 94 W., 6TH P.M.
GARFIELD COUNTY, COLORADO

JOB NO: 2011900.004	DATE DRAWN - BY: 6/18/12 - rcr
REVISIONS:	SCALE: 1" = 1000'
	EXHIBIT 1 PAGE 1 OF 1

R. 94 W.



SCALE: 1" = 1000'
0' 250' 500' 1000'

T. 7 S.

BOTTOM HOLE LOCATION
 BHL LATITUDE(NAD 83)
 NORTH 39.430516 DEG.
 BHL LONGITUDE(NAD 83)
 WEST 107.912376 DEG
 BHL COLORADO CENTRAL
 ZONE (NAD83)
 NORTHING
 1590742 FT.
 EASTING
 2318673 FT.

LEGEND

- BOTTOM HOLE LOCATION
- CALCULATED CORNER
- FOUND CORNER MONUMENT, AS NOTED
- LEASE LINE
- PROPERTY LINE

SURVEYOR'S STATEMENT

I, Ronald C. Rennke, an employee and agent for William H. Smith & Associates P.C., Inc. state the plat hereon is a representation of a field survey made under my authority of the shown RULISON FEDERAL 20-21B bottom hole location.

NOTES

- (1.) Basis of Datum is the Colorado State Plane Coordinate System, Central Zone, NAD83 (horizontal) & NAVD88 (vertical) derived from OPUS solution.
- (2.) The Basis of Bearings for this survey is referenced to the south line of the SW4 of Section 17 monumented with USGLO brass caps dated 1911 and bearing N 88°30'06" W.
- (3.) Current land use is native, non-crop & rangeland.
- (4.) Improvements exist within 400' radius, see exhibit 2 for details.
- (5.) GPS operator Ron Rennke, observed PDOP 1.6
- (6.) All GPS observations for the shown well location are in compliance with COGCC rule no. 215.



Notice: In accordance with Colorado State Law, any legal action based upon any defect in this survey plat must commence within three (3) years after first discovery of such defect. In no event may any action based upon any defect in this survey plat be commenced more than ten (10) years from the date of certification shown hereon.



WILLIAM H. SMITH & ASSOCIATES P.C.
 SURVEYING CONSULTANTS
 550 EAST SECOND NORTH PHONE: 307-875-3638
 GREEN RIVER, WY 307-875-3639
 www.whsmithpc.com

**PLAT OF BOTTOM HOLE LOCATION
 FOR NOBLE ENERGY, INC
 RULISON FEDERAL 20-21B - NE4NW4 SECTION 20
 445' F/NL & 2004' F/WL, SECTION 20
 T. 7 S., R. 94 W., 6TH P.M.
 GARFIELD COUNTY, COLORADO**

JOB NO: 2011900.004	DATE DRAWN - BY: 6/18/12 - rcr
REVISIONS:	SCALE: 1" = 1000'
	EXHIBIT 1 PAGE 1 OF 1