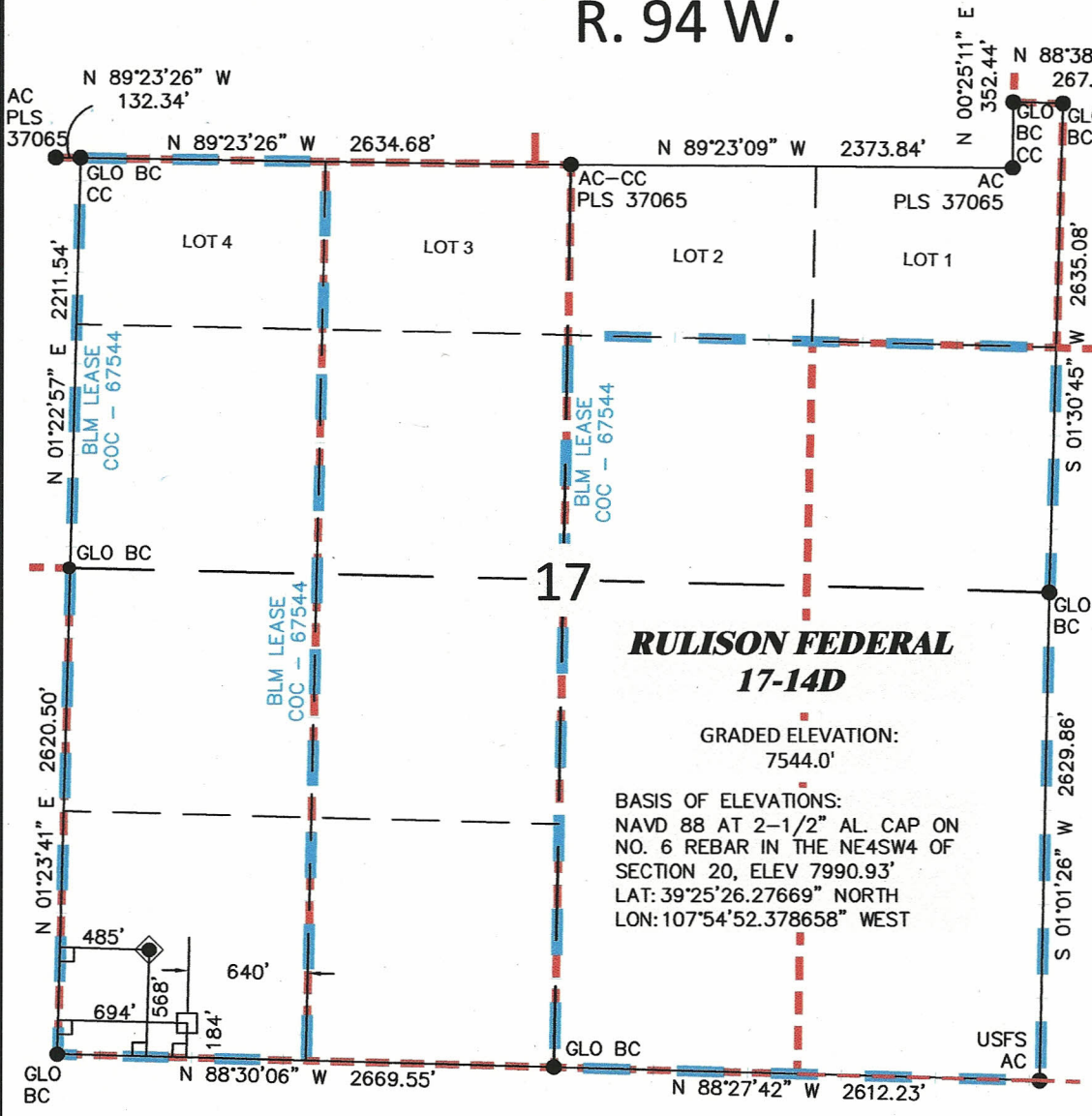


R. 94 W.



SCALE: 1"=1000'
0' 250' 500' 1000'

T. 7 S.

SURFACE HOLE LOCATION

SHL LATITUDE(NAD 83)
NORTH 39.433296 DEG.
SHL LONGITUDE(NAD 83)
WEST 107.917757 DEG.

SHL COLORADO CENTRAL
ZONE (NAD83)
NORTHING
1591794.41 FT.
EASTING
2317180.60 FT.

BOTTOM HOLE LOCATION

BHL LATITUDE(NAD 83)
NORTH 39.432243 DEG.
BHL LONGITUDE(NAD 83)
WEST 107.917014 DEG.

BHL COLORADO CENTRAL
ZONE (NAD83)
NORTHING
1591406 FT.
EASTING
2317380 FT.

LEGEND

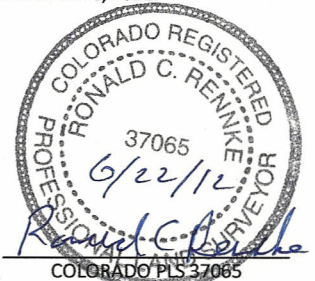
- SURFACE HOLE LOCATION
- BOTTOM HOLE LOCATION
- FOUND CORNER MONUMENT, AS NOTED
- LEASE LINE
- PROPERTY LINE

SURVEYOR'S STATEMENT

I, Ronald C. Renneke, an employee and agent for William H. Smith & Associates P.C., Inc. state the plat hereon is a representation of a field survey made under my authority of the shown RULISON FEDERAL 17-14D surface hole location, being staked on the ground as shown hereon on June 18, 2012.

NOTES

- (1.)Basis of Datum is the Colorado State Plane Coordinate System, Central Zone, NAD83 (horizontal) & NAVD88 (vertical) derived from OPUS solution.
- (2.) The Basis of Bearings for this survey is referenced to the south line of the SW4 of Section 17 monumented with USGLO brass caps dated 1911 and bearing N 88°30'06" W.
- (3.) Current land use is native, non-crop & rangeland.
- (4.) Improvements exist within 400' radius, see exhibit 2 for details.
- (5.) GPS operator Ron Renneke, observed PDOP 1.6
- (6.) All GPS observations for the shown well location are in compliance with COGCC rule no. 215.



Notice: In accordance with Colorado State Law, any legal action based upon any defect in this survey plat must commence within three (3) years after first discovery of such defect. In no event may any action based upon any defect in this survey plat be commenced more than ten (10) years from the date of certification shown hereon.



WILLIAM H. SMITH & ASSOCIATES P.C.
SURVEYING CONSULTANTS
550 EAST SECOND NORTH PHONE: 307-875-3638
GREEN RIVER, WY 307-875-3639
www.whsmithpc.com

**PLAT OF DRILLING LOCATION
FOR NOBLE ENERGY, INC
RULISON FEDERAL 17-14D - SW4SW4 SECTION 17
568' F/SL & 485' F/WL, SECTION 17
T. 7 S., R. 94 W., 6TH P.M.
GARFIELD COUNTY, COLORADO**

JOB NO: 2011900.004

REVISIONS:

DATE DRAWN - BY: 6/18/12 - rcr

SCALE: 1" = 1000'

EXHIBIT 1

PAGE 1 OF 1