

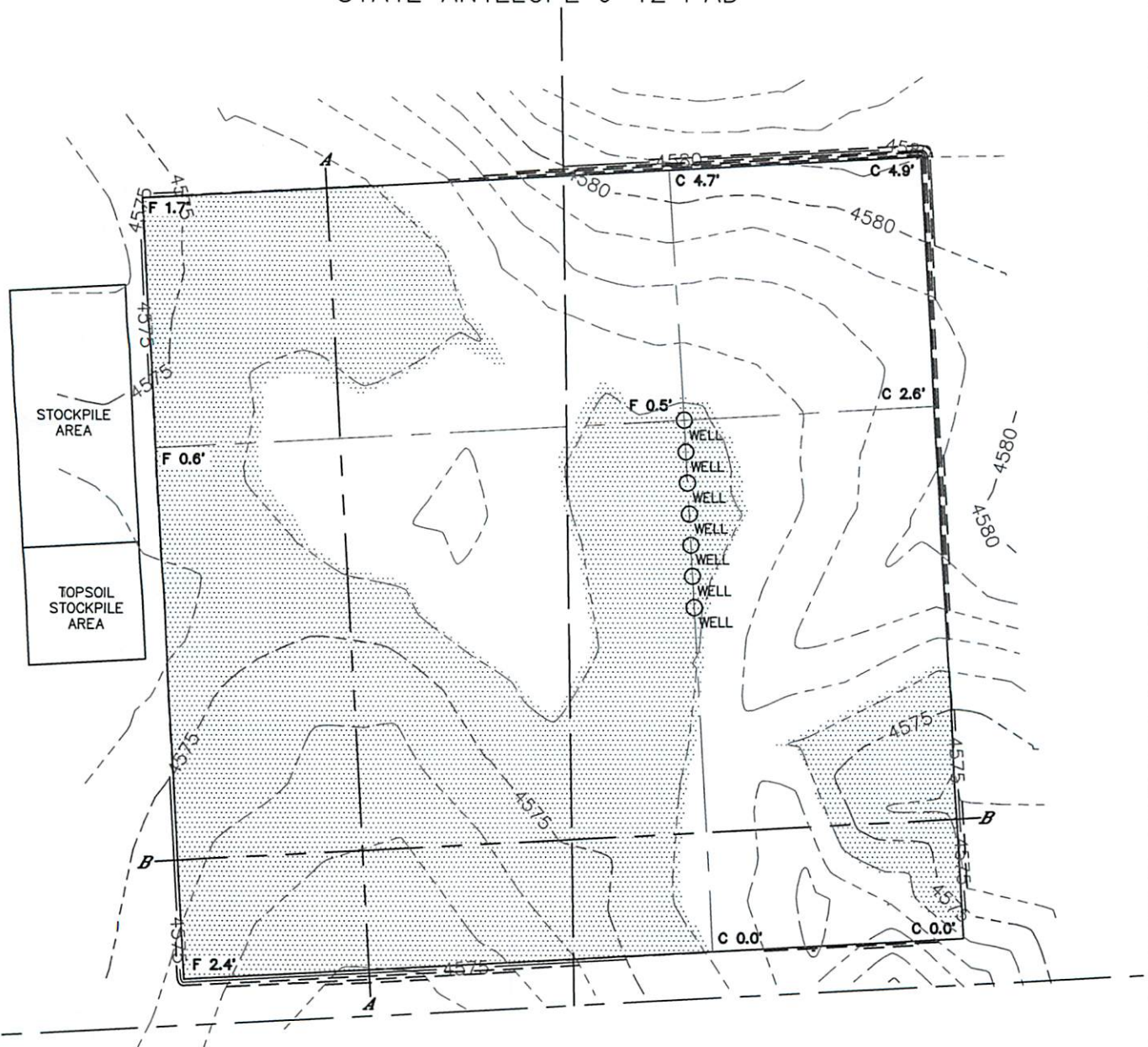


Lat40°, Inc. 1635 Foxtrail Drive, Suite 325 Loveland, CO 970-776-3321

CUT & FILL DIAGRAM

STATE ANTELOPE J-12 PAD

SECTION: 12
TOWNSHIP: 5N
RANGE: 62W



OPERATOR: BONANZA CREEK ENERGY, INC.

LOCATION: 370' FSL, 1388' F WL

EXISTING ELEV= 4575.6'

PROPOSED ELEV= 4576.1'

DISTURBANCE= 5.9 ACRES

ESTIMATED EARTHWORK:

TOPSOIL= 9,259 CY

CUT= 5,952 CY

FILL= 5,944 CY

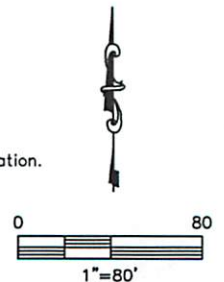
EXCESS= 8 CY

NOTE:

- 1) Ground elevations are based on an observed GPS elevation (NAVD 1988 DATUM).
- 2) No allowance has been made for soil expansion or compaction.
- 3) Proposed elevation does not account for top soil removal.
- 4) Top soil volume assumes 12" depth across entire location.
- 5) Fill slopes 2:1
- 6) Cut slopes 1.5:1

LEGEND

EX. CONTOUR	---
PRO. CONTOUR	---
FILL AREA	■



DATE: 10/29/2012
PROJECT#: 2012072

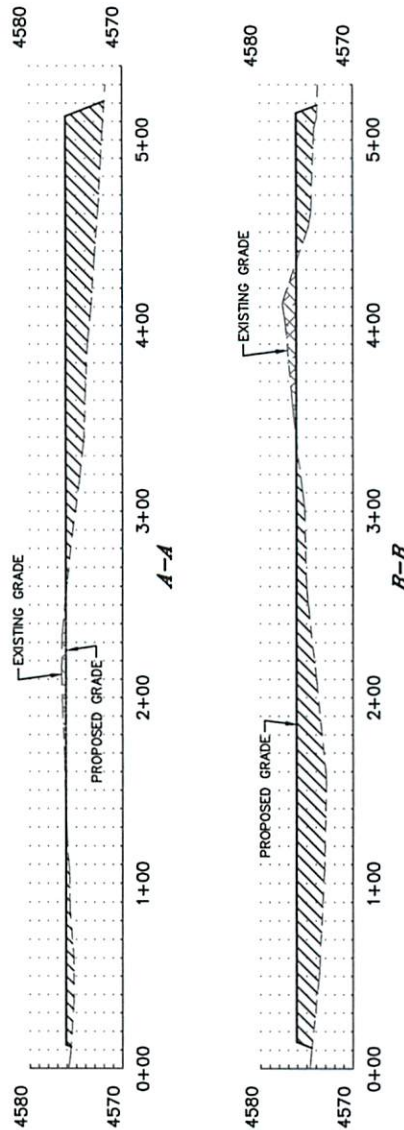


Lat40°, Inc. 1635 Foxtrail Drive, Suite 325 Loveland, CO 970-776-3321

CROSS SECTION DIAGRAM

STATE ANTELOPE J-12 PAD

SECTION: 12
TOWNSHIP: 5N
RANGE: 62W



HORIZONTAL SCALE: 1"=100', VERTICAL SCALE: 1"=20'