



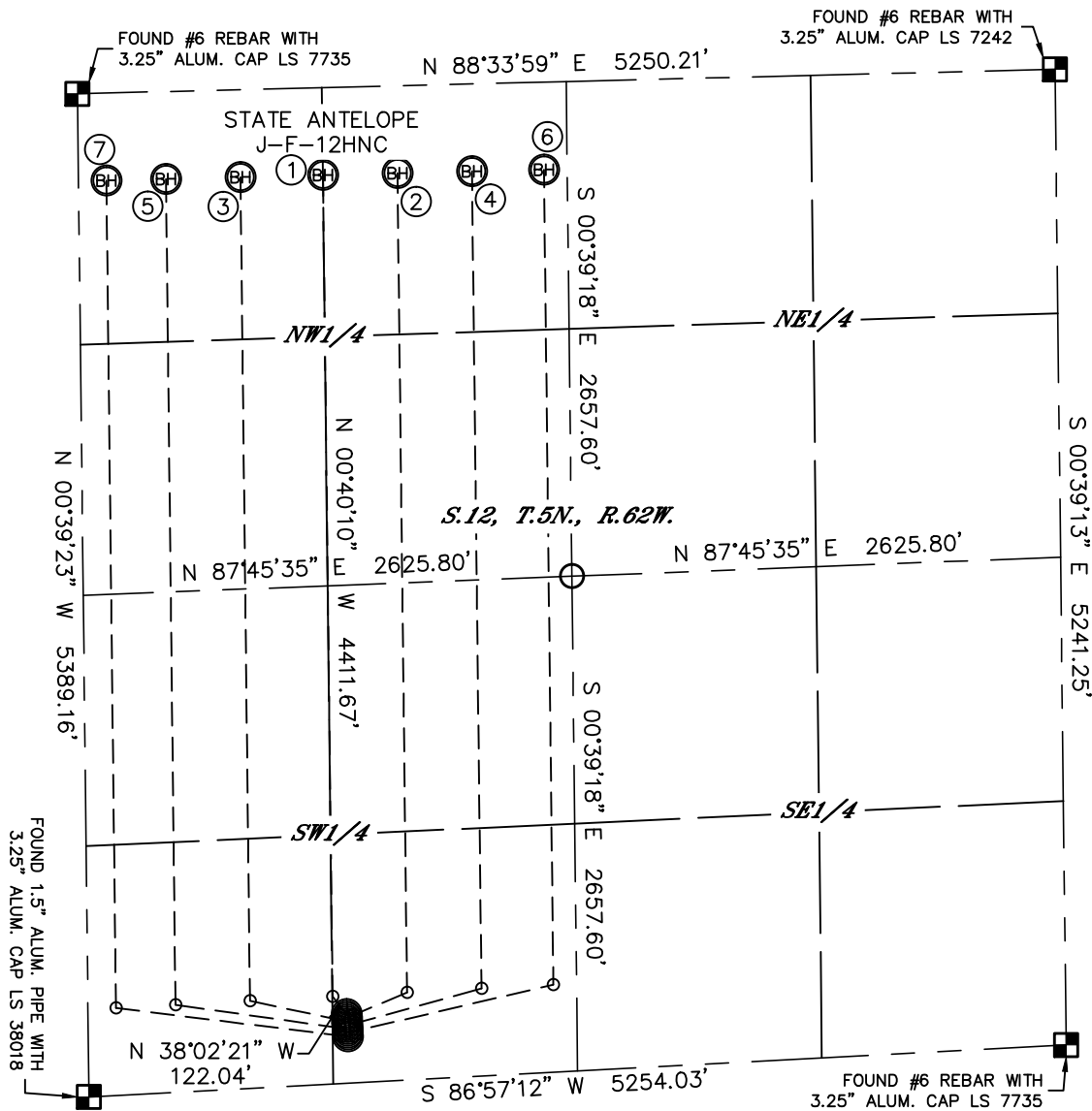
Lat40°, Inc. 1635 Foxtrail Drive, Suite 325 Loveland, CO 970-776-3321

## MULTI-WELL PLAN

STATE ANTELOPE J-12 PAD

THIS MAP DOES NOT REPRESENT A BOUNDARY SURVEY

SECTION: 12  
TOWNSHIP: 5N  
RANGE: 62W



①

SURFACE LOCATION  
STATE ANTELOPE  
J-F-12HNC  
370' FSL  
1388' FWL

②

SURFACE LOCATION  
STATE ANTELOPE  
A2-12HNC  
350' FSL  
1389' FWL

③

SURFACE LOCATION  
STATE ANTELOPE  
A3-12HNC  
330' FSL  
1390' FWL

④

SURFACE LOCATION  
STATE ANTELOPE  
A4-12HNC  
310' FSL  
1391' FWL

⑤

SURFACE LOCATION  
STATE ANTELOPE  
A5-12HNC  
290' FSL  
1391' FWL

⑥

SURFACE LOCATION  
STATE ANTELOPE  
A6-12HNC  
270' FSL  
1392' FWL

⑦

SURFACE LOCATION  
STATE ANTELOPE  
A7-12HNC  
250' FSL  
1393' FWL

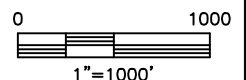
### LEGEND



= ALIQUOT MONUMENT AS DESCRIBED



= CALCULATED POSITION



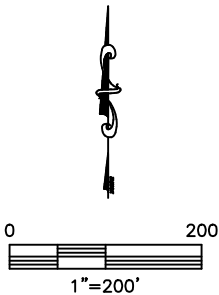
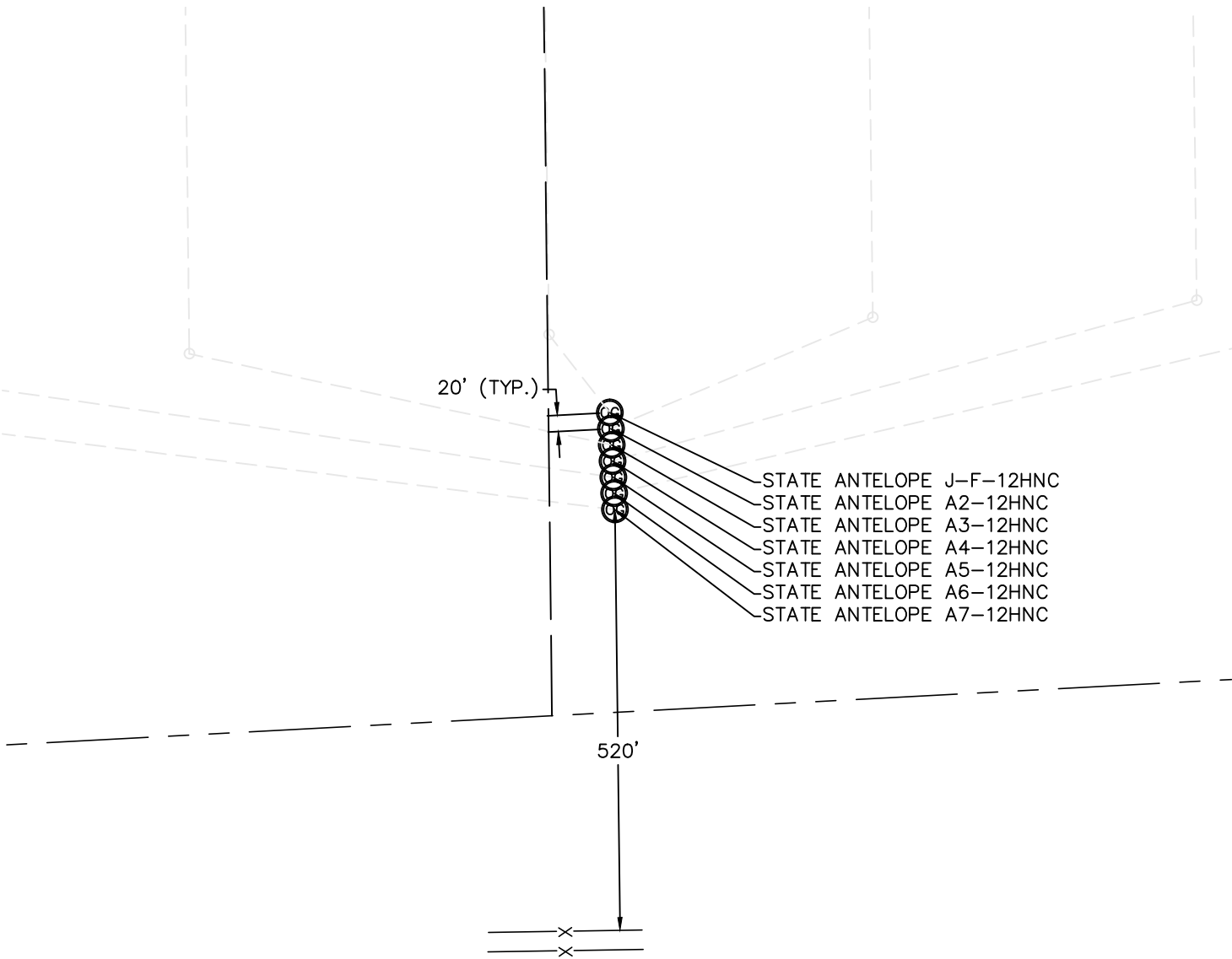
DATE: 10/29/2012  
PROJECT#: 2012072



Lat40°, Inc. 1635 Foxtrail Drive, Suite 325 Loveland, CO 970-776-3321

MULTI-WELL PLAN  
STATE ANTELOPE J-12 PAD

SECTION: 12  
TOWNSHIP: 5N  
RANGE: 62W



DATE: 10/29/2012  
PROJECT#: 2012072