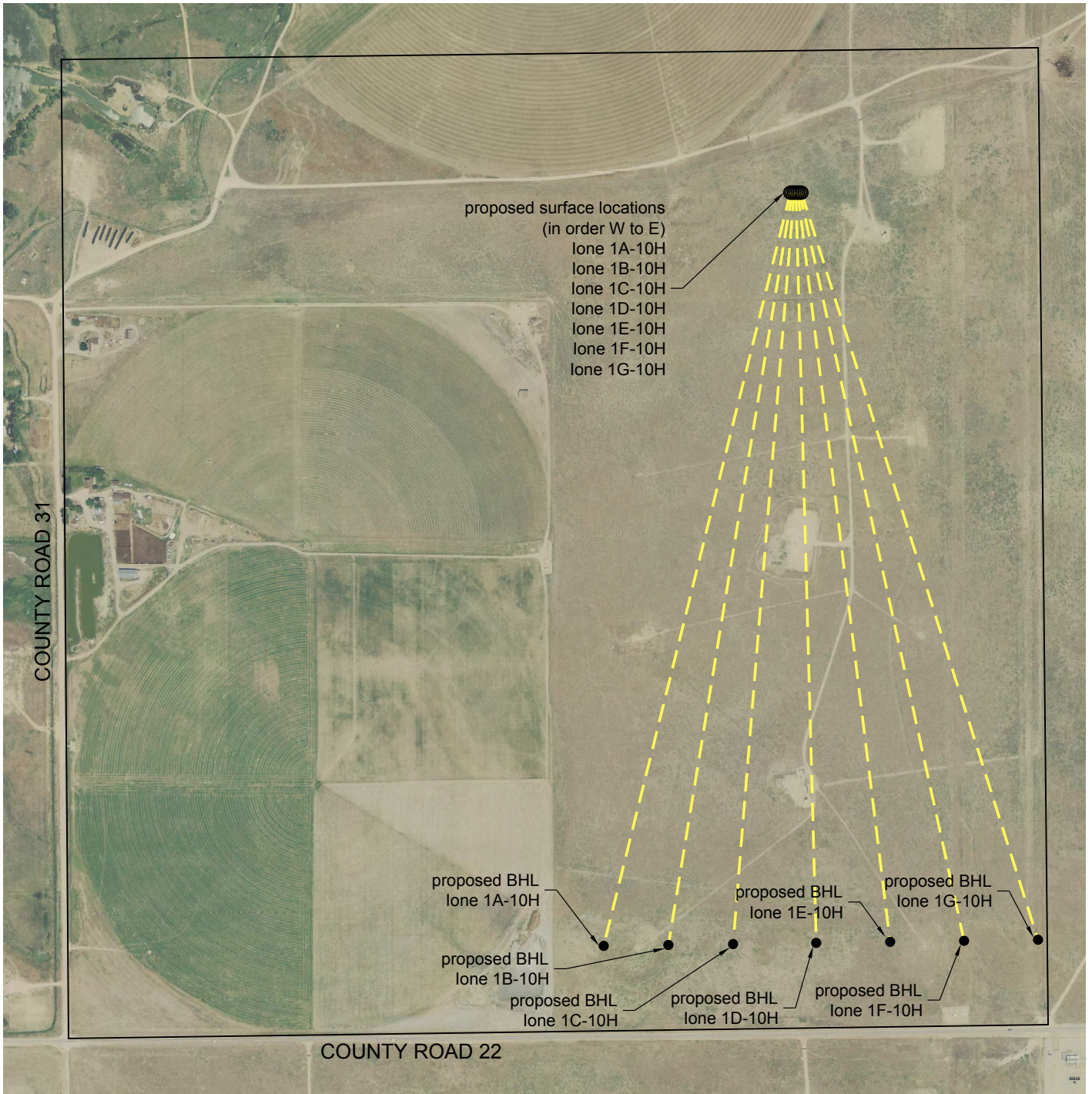


IONE 62N66W / 10 NWNE 1D-10H HZ PAD Multi-Well Plan



lone NWNE Pad BHL Map

TOWNSHIP 2 NORTH, RANGE 66 WEST
SECTION 10
WELD COUNTY, COLORADO

SCALE: 1" = 800'

OCTOBER 22, 2012