

WELLBORE DIAGRAM

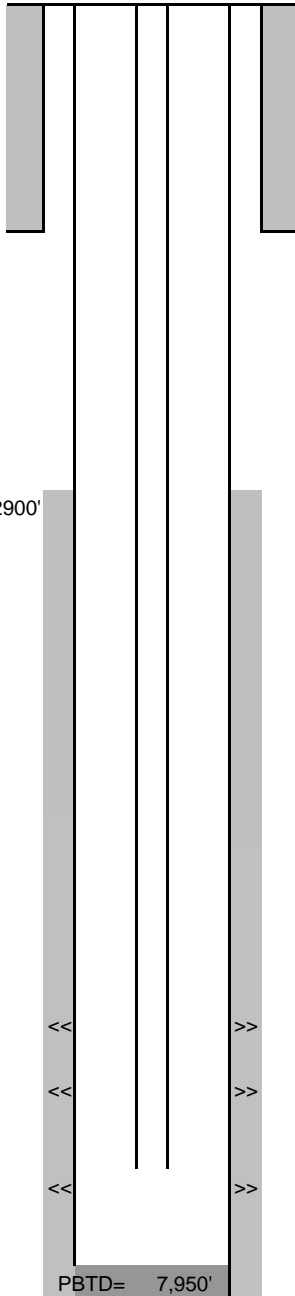
Mineral Resources Westbone 1-3-22

NWSE Sec 22, T5N, R66W
SHL: 2388' FSL, 2457' FEL
BHL: 1974' FNL, 676' FWL
Weld County CO
05-123-33975

Directions: Hwy 85 north to Hwy 34, west to 47th ave.,
1/2 south, west to location.

Updated
12/03/12
AJC

G.L.= 4804
K.B.= 4820
16



8-5/8" 24# set at 649' (12-1/4" hole)
Cmt'd w/ 460 sx to Surf.

2-3/8" J-55 4.7# TBG LANDED @ 7719' (249 jts), 2/24/12

CBL TOC: 2900'

<< >> **NBRR "A" 7425'-7431', 6 spf, 10/07/11**
<< >> **NBRR "B" 7563'-7569', 6 spf, 10/07/11**
<< >> **Codell 7744'-7754', 4 spf, 10/04/11**

Cleaned out to 7893' KB, 2/24/12

TD MD= 7,980'
TD VD= 7,422'

4-1/2" 11.6# CSG @ 7964' (7-7/8" O.H.)
Cmt'd w/ 500 sx lead, 11.8 ppg; 190 sx tail, 14.6 ppg