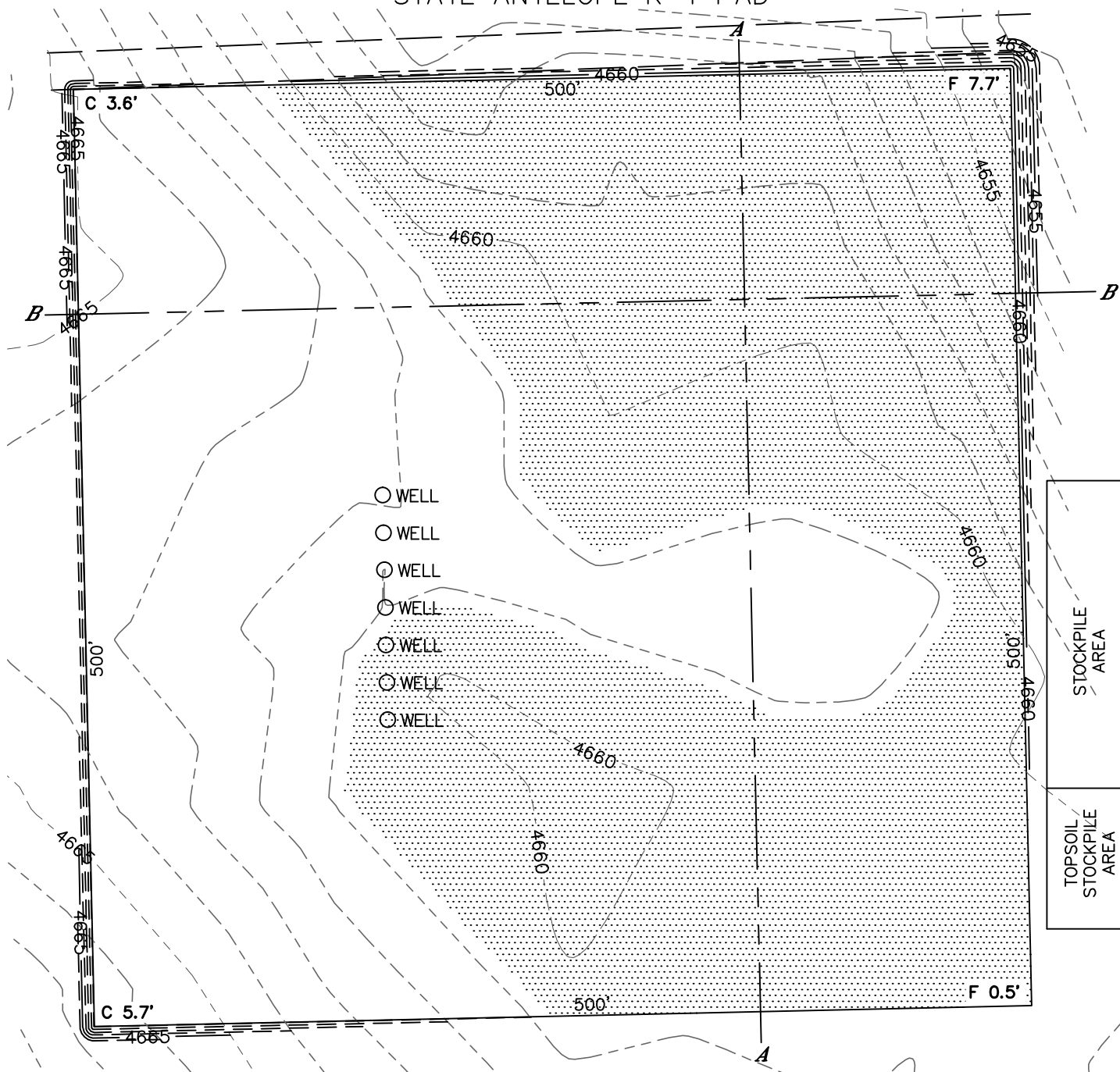


Lat40°, Inc. 1635 Foxtrail Drive, Suite 325 Loveland, CO 970-776-3321

CUT & FILL DIAGRAM

STATE ANTELOPE K-1 PAD

SECTION: 1
TOWNSHIP: 5N
RANGE: 62W




OPERATOR: BONANZA CREEK ENERGY, INC.
LOCATION: 568 FNL, 2513 FWL
EXISTING ELEV=4660.3'
PROPOSED ELEV=4660.8'
DISTURBANCE= 6.0 ACRES

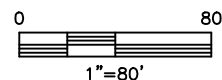
ESTIMATED EARTHWORK:
TOPSOIL= 9,648 CY
CUT= 6,880 CY
FILL= 6,870 CY
STOCKPILE:
EXCESS= 10 CY

NOTE:

- 1) Ground elevations are based on an observed GPS elevation (NAVD 1988 DATUM).
- 2) No allowance has been made for soil expansion or compaction
- 3) Proposed elevation does not account for top soil removal.
- 4) Top soil volume assumes 12" depth across entire location.
- 5) Fill slopes 2:1
- 6) Cut slopes 1.5:1

LEGEND

EX. CONTOUR - - - - -
PRO. CONTOUR - - - - -
FILL AREA 



DATE: 10-29-12
PROJECT#: 2012072