



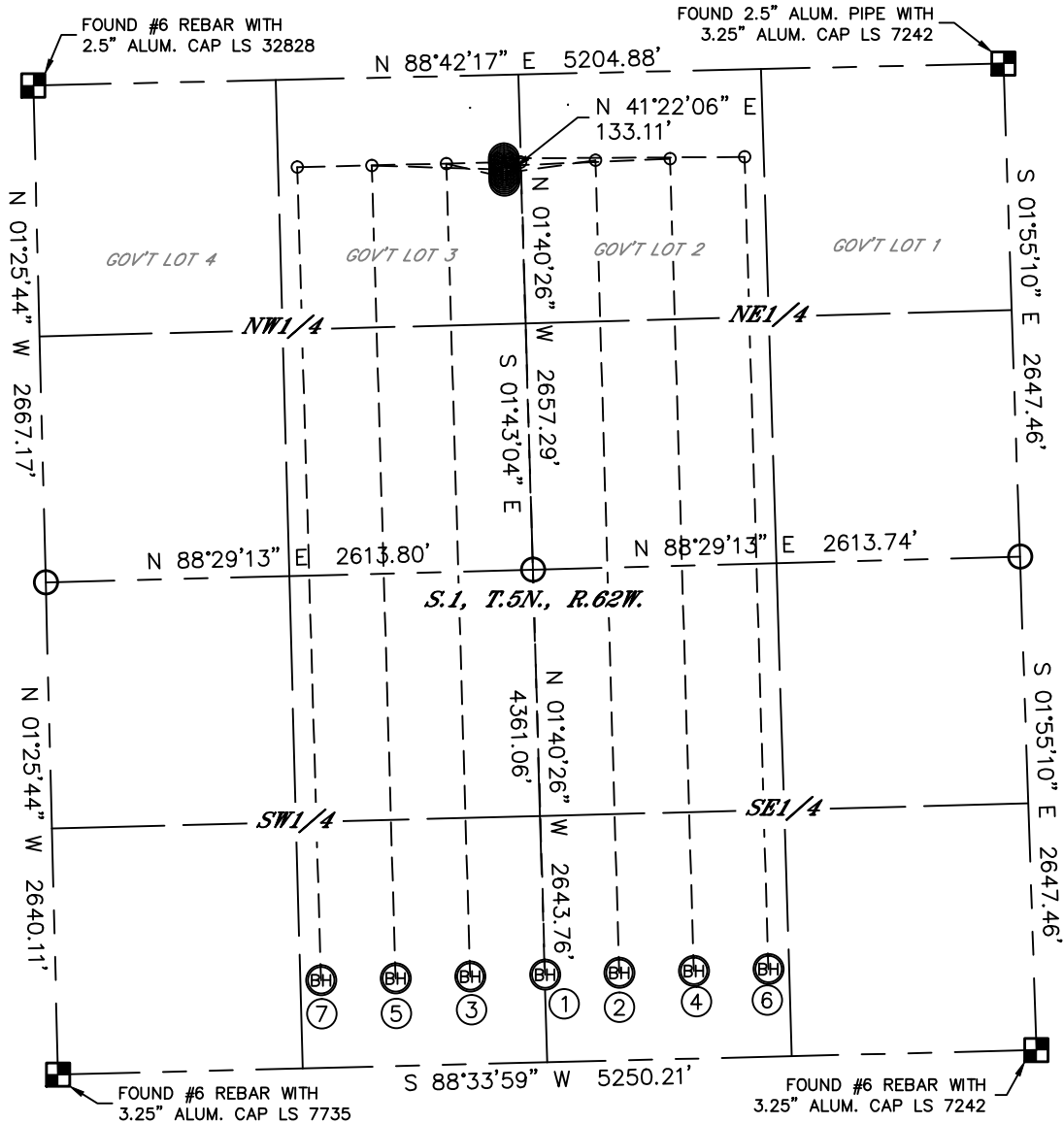
Lat40°, Inc. 1635 Foxtrail Drive, Suite 325 Loveland, CO 970-776-3321

MULTI-WELL PLAN

STATE ANTELOPE K-1 PAD

THIS MAP DOES NOT REPRESENT A BOUNDARY SURVEY

SECTION: 1
TOWNSHIP: 5N
RANGE: 62W



①
SURFACE LOCATION
STATE ANTELOPE
K-O-1HNB
568' FNL
2513' FWL
LAT: 40.43578°N
LONG: 104.27187°W

②
SURFACE LOCATION
STATE ANTELOPE A2
548' FNL
2513' FWL
LAT: 40.43584°N
LONG: 104.27187°W

③
SURFACE LOCATION
STATE ANTELOPE A3
528' FNL
2513' FWL
LAT: 40.43589°N
LONG: 104.27187°W

④
SURFACE LOCATION
STATE ANTELOPE A4
508' FNL
2513' FWL
LAT: 40.43595°N
LONG: 104.27187°W

⑤
SURFACE LOCATION
STATE ANTELOPE A5
488' FNL
2513' FWL
LAT: 40.43600°N
LONG: 104.27187°W

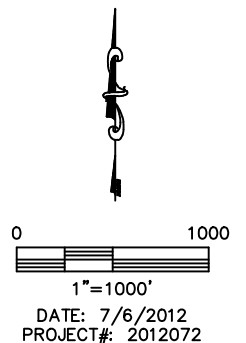
⑥
SURFACE LOCATION
STATE ANTELOPE A6
468' FNL
2513' FWL
LAT: 40.43606°N
LONG: 104.27187°W

⑦
SURFACE LOCATION
STATE ANTELOPE A7
448' FNL
2513' FWL
LAT: 40.43611°N
LONG: 104.27187°W

LEGEND

ALIQUOT MONUMENT
AS DESCRIBED

CALCULATED POSITION





Lat40°, Inc. 1635 Foxtrail Drive, Suite 325 Loveland, CO 970-776-3321

MULTI-WELL PLAN
STATE ANTELOPE K-1 PAD

SECTION: 1
TOWNSHIP: 5N
RANGE: 62W

