

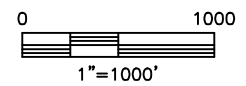
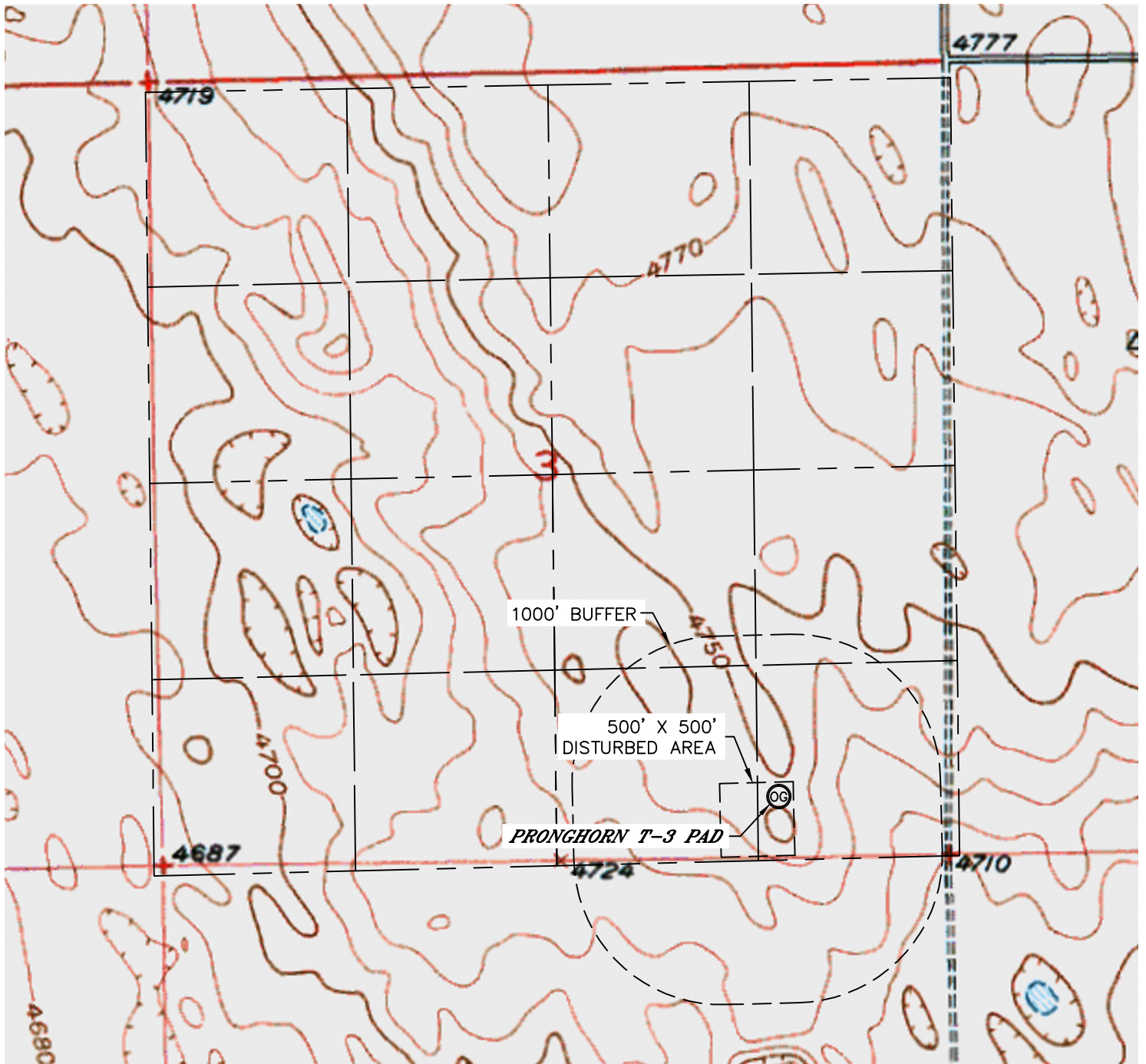


Lat40°, Inc. 1635 Foxtrail Drive, Suite 325 Loveland, CO 970-776-3321

HYDROLOGY MAP

PRONGHORN T-3 PAD

SECTION: 3
TOWNSHIP: 5N
RANGE: 61W



NO VISIBLE SURFACE WATER WITHIN 1000'

DATE: 7/24/2012
PROJECT#: 2012073