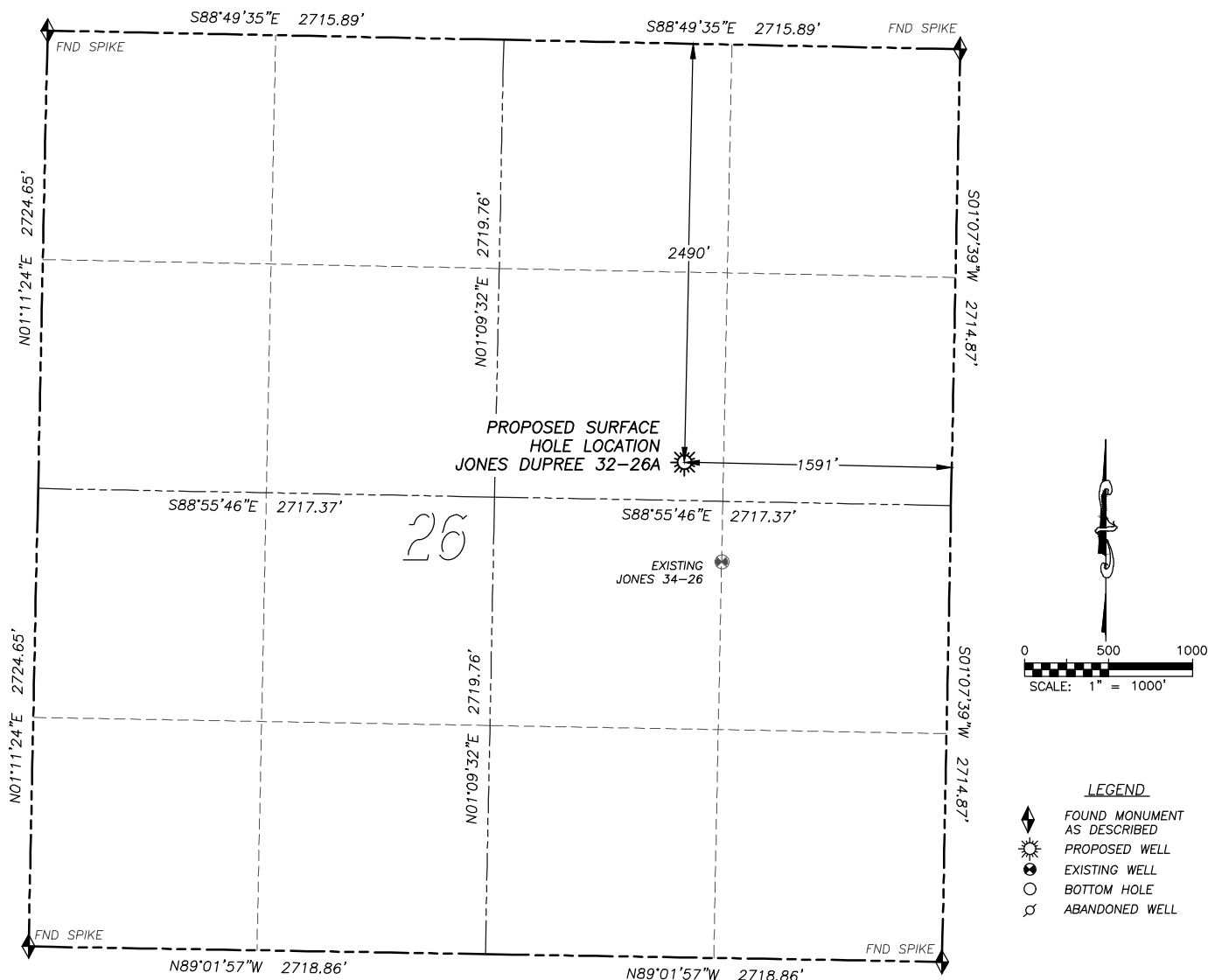


# WELL LOCATION CERTIFICATE

## JONES DUPREE 32-26A

SECTION 26, TOWNSHIP 3 SOUTH, RANGE 51 WEST OF THE 6TH PRINCIPAL MERIDIAN



### NAD 83 LATITUDE AND LONGITUDE

JONES DUPREE 32-26A

SURFACE HOLE:

LATITUDE: N39.76513°

LONGITUDE: W103.05335°

ELEVATION: 4614'

FOOTAGE: 2490' FNL, 1591' FEL

PDOP: 1.2

QTR/QTR: SW4/NE4

PROP LINE: 228' SOUTH

GPS OPERATOR: T. DALEY

### NEAREST EXISTING WELL:

JONES 34-26

LATITUDE: N39.76352°

LONGITUDE: W104.05249°

ELEVATION: 4615'

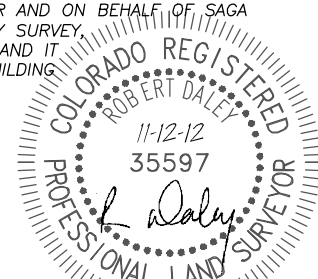
633' SOUTHWEST

IN ACCORDANCE WITH A REQUEST FROM SAGA PETROLEUM, DALEY LAND SURVEYING, INC. HAS DETERMINED THE SURFACE LOCATION OF THE JONES DUPREE 32-26A WELL TO BE 2590' FNL, 1591' FEL, AS MEASURED AT NINETY (90) DEGREES FROM THE SECTION LINES OF SECTION 26, TOWNSHIP 3 SOUTH, RANGE 51 WEST OF THE 6TH PRINCIPAL MERIDIAN, WASHINGTON COUNTY, COLORADO.

I HEREBY CERTIFY THAT THIS WELL LOCATION CERTIFICATE WAS PREPARED BY ME OR UNDER MY DIRECT SUPERVISION, THAT THE WORK WAS COMPLETED ON 11/06/2012 FOR AND ON BEHALF OF SAGA PETROLEUM, AND THAT THIS MAP DOES NOT REPRESENT A BOUNDARY SURVEY, IT IS NOT A LAND SURVEY PLAT OR AN IMPROVEMENT SURVEY PLAT AND IT IS NOT TO BE RELIED UPON FOR THE ESTABLISHMENT OF FENCE, BUILDING OR OTHER FUTURE IMPROVEMENT LINES.

### NOTES:

- 1) BEARINGS FOR THIS MAP ARE ASSUMED AND BASED UPON GPS OBSERVATIONS MADE BETWEEN MONUMENTS LOCATED AT THE NORTHEAST CORNER AND SOUTHEAST CORNER OF SECTION 26, T.3S., R.51W.
- 2) HORIZONTAL DATUM IS NAD83.
- 3) VERTICAL DATUM IS NAVD88 AND ORIGINATES FROM THE LOCAL C.O.R.S. NETWORK, UTILIZING THE GEOID09 MODEL.
- 4) SEE LOCATION DRAWING FOR VISIBLE IMPROVEMENTS WITHIN 400' OF PROPOSED DISTURBED AREA.
- 5) SURFACE USE: RANGELAND.



FOR AND ON BEHALF OF  
DALEY LAND SURVEYING INC.,  
Robert Daley, PLS 35597