

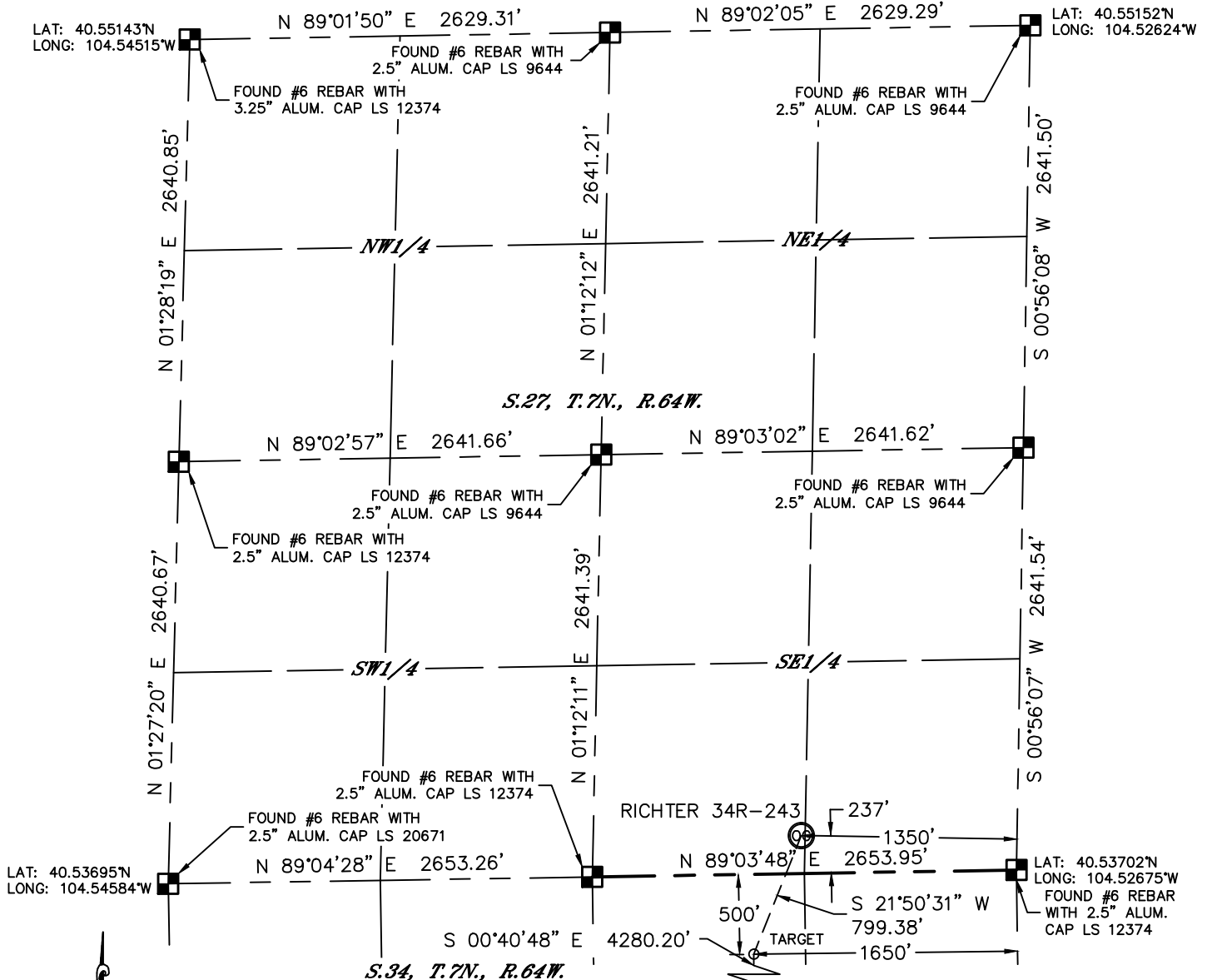


Lat40°, Inc. 1635 Foxtrail Drive, Suite 325 Loveland, CO 970-776-3321

# WELL LOCATION CERTIFICATE

SECTION: 27  
TOWNSHIP: 7N  
RANGE: 64W

THIS MAP DOES NOT REPRESENT A BOUNDARY SURVEY



In accordance with a request from Jeff Dillingham with PDC ENERGY Lat40°, Inc. has determined the surface location of the RICHTER 34R-243 to be 237' from the SOUTH line and 1350' from the EAST line as measured at right angles from the section lines of Section 27, Township 7 North, Range 64 West and the bottom hole to be 500' from the SOUTH line and 1650' from the EAST line as measured at right angles from the section lines of Section 34, Township 7 North, Range 64 West of the Sixth Principal Meridian, County of Weld, State of Colorado. I hereby state that this Well Location Certificate was prepared by me, or under my direct supervision, that the fieldwork was completed on 9/4/2012, for and on behalf of PDC ENERGY. That this is not a Land Survey Plat or an Improvement Survey Plat, and that it is not to be relied upon for establishment of fence, building, or other future improvement lines.

## NOTE:

- 1) Bearings shown are Grid Bearings of the Colorado State Plane Coordinate System, North Zone, North American Datum 1983/2007. The lineal dimensions as contained herein are based upon the "U.S. Survey Foot."
- 2) Ground elevations are based on an observed GPS elevation (NAVD 1988 DATUM).
- 3) IMPROVEMENTS: See LOCATION DRAWING for all visible improvements within 400' of disturbed area.
- 4) SURFACE USE: RANGELAND
- 5) INSTRUMENT OPERATOR: WYATT HALL

## SURFACE LOCATION

LAT: 40.53765°N  
LONG: 104.53159°W  
PDOP: 1.4  
ELEV: 4870'  
1/4, 1/4: SW1/4SE1/4  
NEAREST PROPERTY LINE: 237' SOUTH

## TARGET HOLE

LAT: 40.53563°N  
LONG: 104.53269°W

## BOTTOM HOLE

LAT: 40.52388°N  
LONG: 104.53267°W

## NOTE

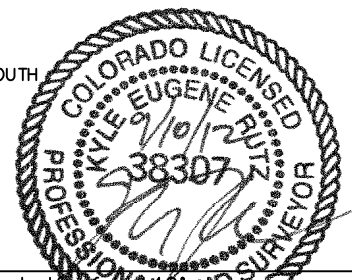
According to Colorado law, you must commence any legal action based upon any defect in this W.L.C. within three years after you discover such defect. In no event, may any action based upon any defect in this survey be commenced more than ten years after the date of the certificate shown hereon. (13-80-105 C.R.S.)

## LEGEND

- = ALIQUOT MONUMENT AS DESCRIBED
- = CALCULATED POSITION

## SHEET 1 OF 2

Kyle E. Rutz—On behalf of Lat40° and  
Colorado Licensed Professional Land Surveyor No. 38307  
DATE: 9/10/2012  
PROJECT#: 2011311



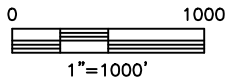
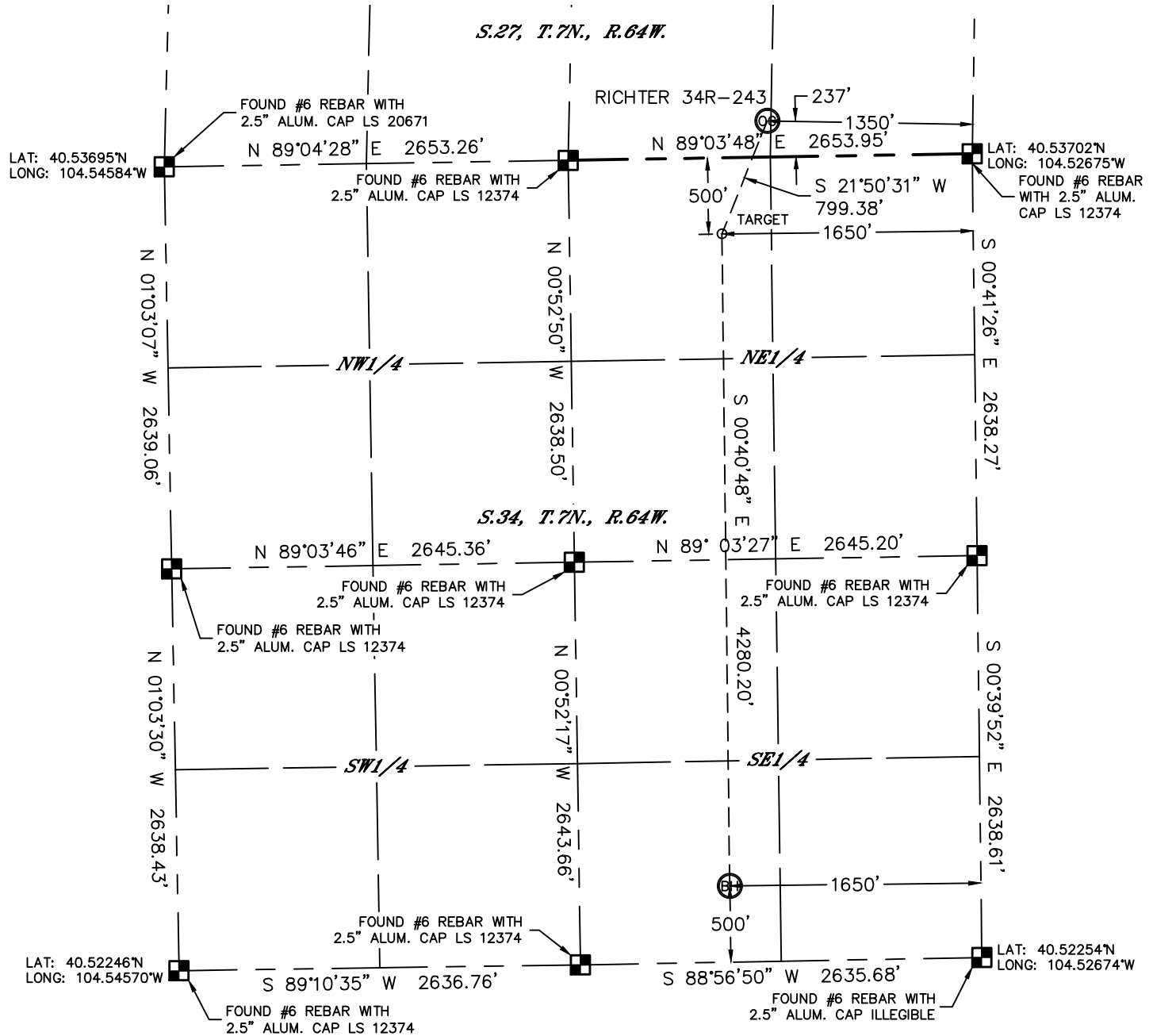


Lat40°, Inc. 1635 Foxtrail Drive, Suite 325 Loveland, CO 970-776-3321

# WELL LOCATION CERTIFICATE

THIS MAP DOES NOT REPRESENT A BOUNDARY SURVEY

SECTION: 27  
TOWNSHIP: 7N  
RANGE: 64W



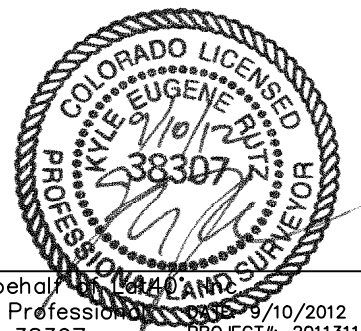
**NOTE**  
According to Colorado law, you must commence any legal action based upon any defect in this W.L.C. within three years after you discover such defect. In no event, may any action based upon any defect in this survey be commenced more than ten years after the date of the certificate shown hereon. (13-80-105 C.R.S.)

**LEGEND**

- = ALIQUOT MONUMENT AS DESCRIBED
- = CALCULATED POSITION

**SHEET 2 OF 2**

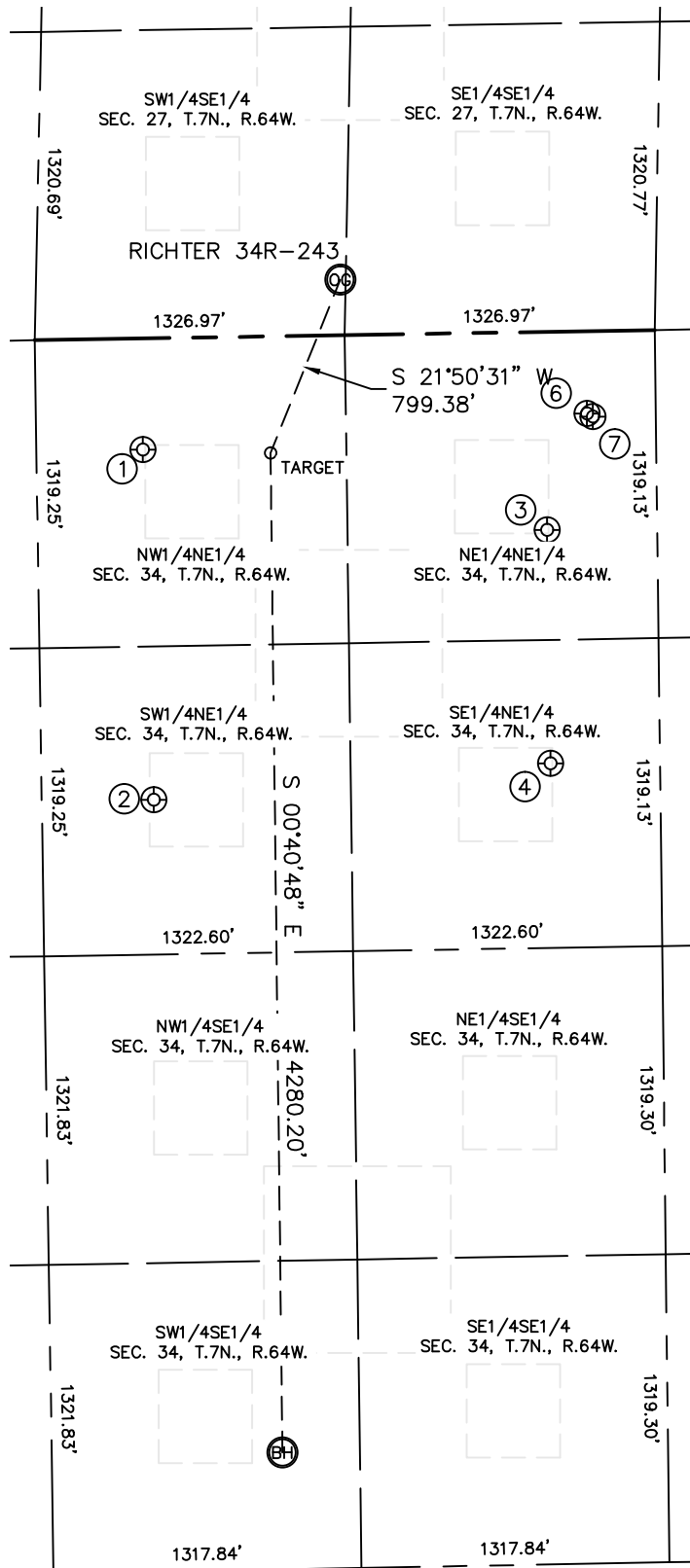
Kyle E. Rutz-On behalf of Lat40, Inc.  
Colorado Licensed Professional Land Surveyor No. 38307  
DATE: 8/10/2012  
PROJECT#: 2011311



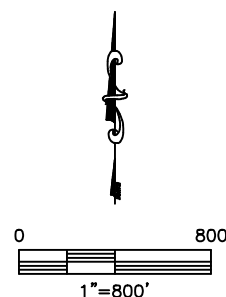
## SITE SKETCH

RICHTER 34R-243

SECTION: 27  
TOWNSHIP: 7N  
RANGE: 64W



- ①  
D DYER 31-34  
NW1/4NE1/4  
476' FNL  
2197' FEL  
LAT-40.53569°N  
LONG-104.53465°W  
PDOP: 2.1  
ELEV: 4852'
- ②  
D DYER 32-34  
SW1/4NE1/4  
1976' FNL  
2168' FEL  
LAT-40.53157°N  
LONG-104.53454°W  
PDOP: 2.9  
ELEV: 4834'
- ③  
D DYER 41-34  
NE1/4NE1/4  
848' FNL  
472' FEL  
LAT-40.53469°N  
LONG-104.52845°W  
PDOP: 2.1  
ELEV: 4865'
- ④  
D DYER 42-34  
SE1/4NE1/4  
1849' FNL  
468' FEL  
LAT-40.53194°N  
LONG-104.52843°W  
PDOP: 2.7  
ELEV: 4842'
- ⑥  
DRYER USX AB  
35-68-1HN  
NE1/4NE1/4  
352' FNL  
295' FEL  
LAT-40.53605°N  
LONG-104.52781°W  
PDOP: 1.3  
ELEV: 4872'
- ⑦  
DRYER USX AB  
35-67-1HN  
NE1/4NE1/4  
367' FNL  
269' FEL  
LAT-40.53601°N  
LONG-104.52772°W  
PDOP: 1.8  
ELEV: 4872'



DATE: 9/10/2012  
PROJECT#: 2011311