

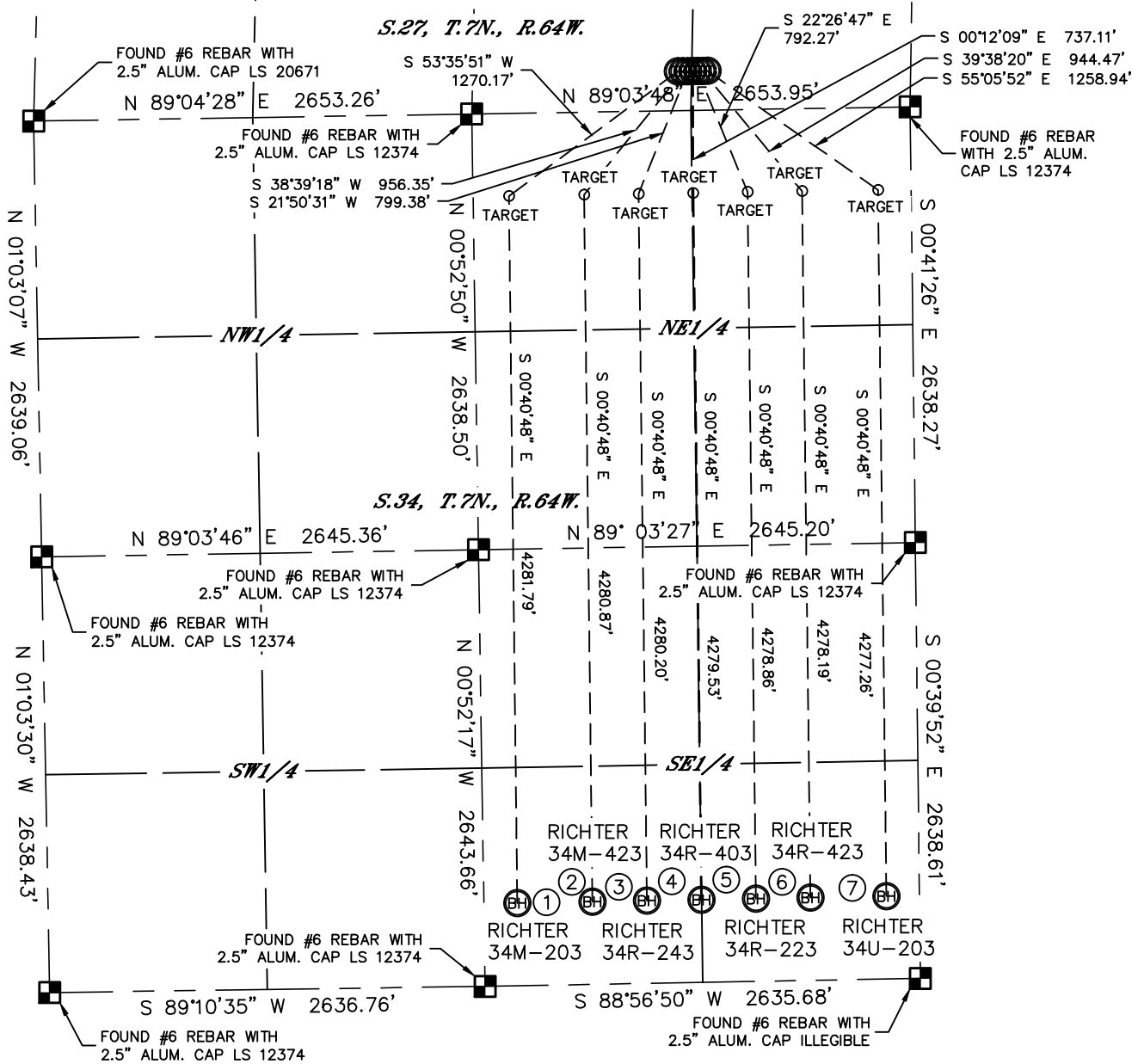


MULTI-WELL PLAN

RICHTER 27T-HZ PAD

THIS MAP DOES NOT REPRESENT A BOUNDARY SURVEY

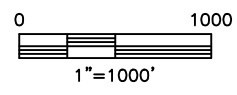
SECTION: 27
TOWNSHIP: 7N
RANGE: 64W



- ① -BOTTOM HOLE-
RICHTER 34M-203
500' FSL
2435' FEL
LAT: 40.52387°N
LONG: 104.53550°W
- ② -BOTTOM HOLE-
RICHTER 34M-423
500' FSL
1980' FEL
LAT: 40.52387°N
LONG: 104.53386°W
- ③ -BOTTOM HOLE-
RICHTER 34R-243
500' FSL
1650' FEL
LAT: 40.52388°N
LONG: 104.53267°W
- ④ -BOTTOM HOLE-
RICHTER 34R-403
500' FSL
1320' FEL
LAT: 40.52389°N
LONG: 104.53149°W
- ⑤ -BOTTOM HOLE-
RICHTER 34R-223
500' FSL
990' FEL
LAT: 40.52390°N
LONG: 104.53030°W
- ⑥ -BOTTOM HOLE-
RICHTER 34R-423
500' FSL
660' FEL
LAT: 40.52390°N
LONG: 104.52911°W
- ⑦ -BOTTOM HOLE-
RICHTER 34U-203
500' FSL
200' FEL
LAT: 40.52391°N
LONG: 104.52746°W

LEGEND

- = ALIQUOT MONUMENT AS DESCRIBED
- = CALCULATED POSITION



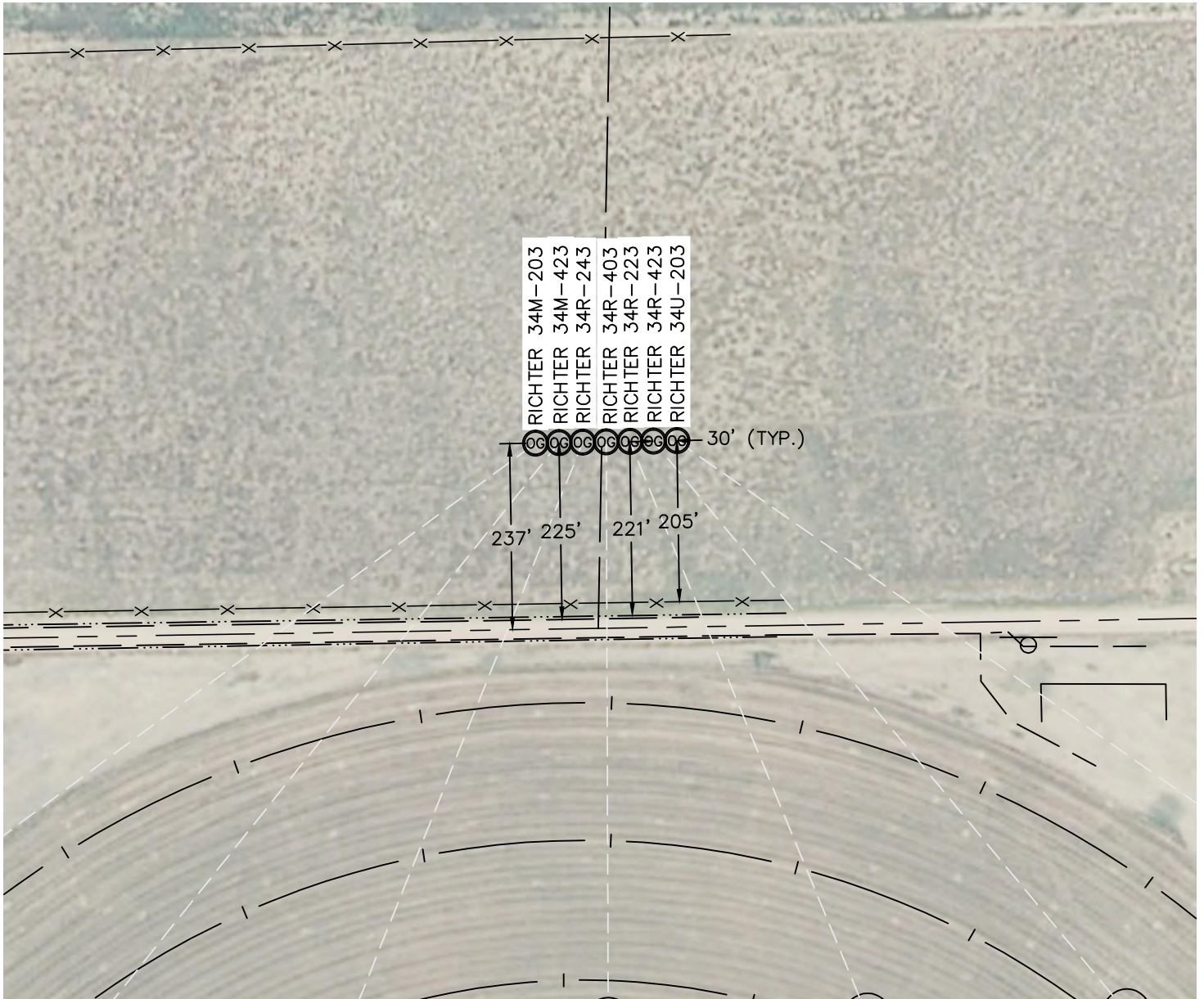


Lat40°, Inc. 1635 Foxtrail Drive, Suite 325 Loveland, CO 970-776-3321

MULTI-WELL PLAN

RICHTER 27T-HZ PAD

SECTION: 27
TOWNSHIP: 7N
RANGE: 64W



DATE: rev.10/18/2012
PROJECT#: 2011311