

**REFERENCE INFORMATION**

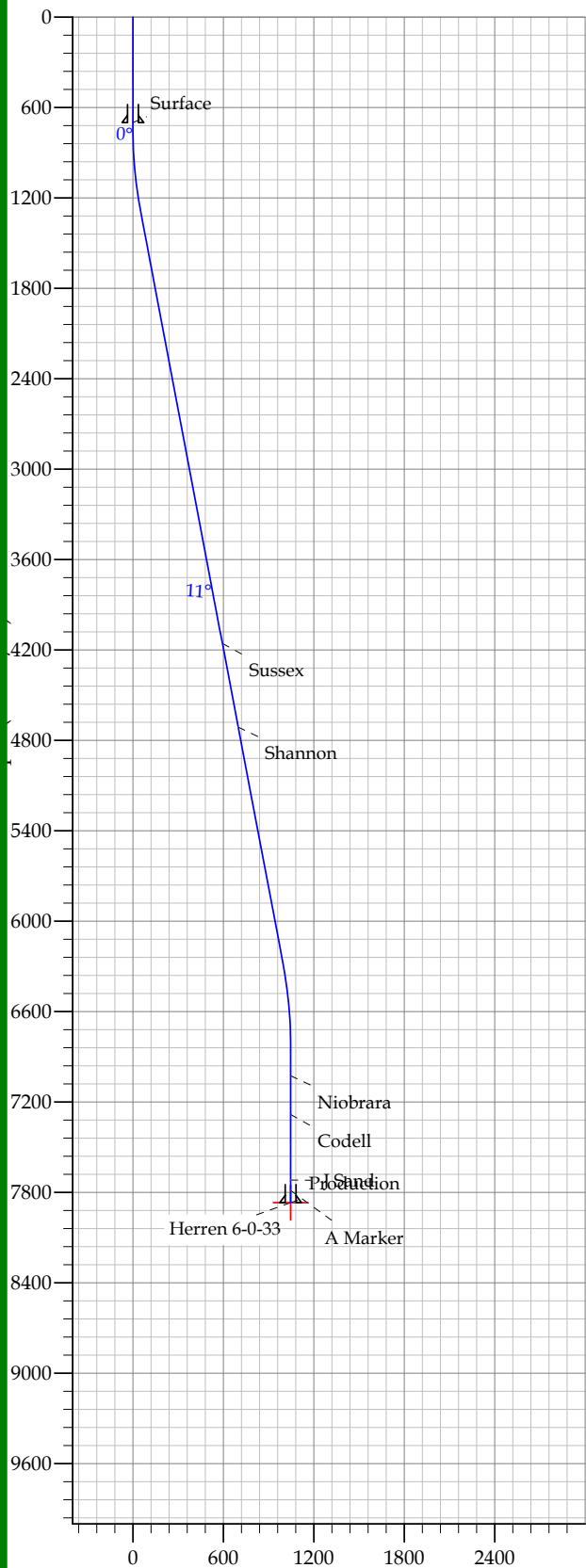
Co-ordinate (N/E) Reference: Well Herren 6-0-33, True North  
 Vertical (TVD) Reference: WELL @ 4837.0ft (Original Well Elev)  
 Section (VS) Reference: Slot - (0.0N, 0.0E)  
 Measured Depth Reference: WELL @ 4837.0ft (Original Well Elev)  
 Calculation Method:

**WELL DETAILS: Herren 6-0-33**

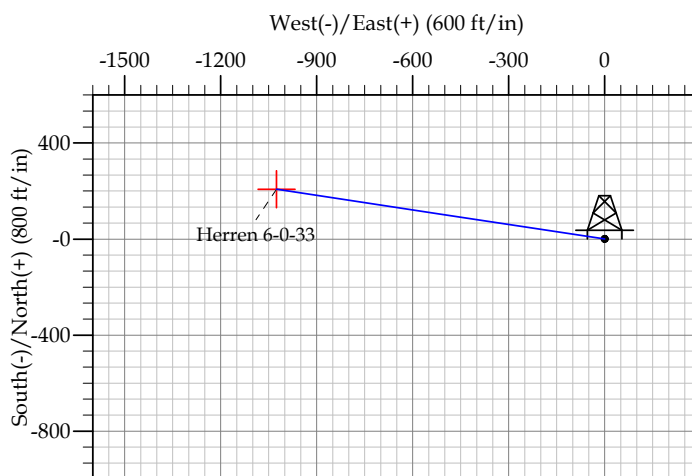
+N/-S	+E/-W	Northing	Ground Level:	4824.0	Longitude	Slot
0.0	0.0	1312214.70	Easting	3171296.4640° 11' 19.680 N	04° 53' 12.696 W	

**SECTION DETAILS**

Sec	MD	Inc	Azi	TVD	+N/-S	+E/-W	DLeg	TFace	VSec	Target
1	0.0	0.00	0.00	0.0	0.0	0.0	0.00	0.00	0.0	
2	750.0	0.00	0.00	750.0	0.0	0.0	0.00	0.00	0.0	
3	1285.5	10.71	281.45	1282.4	9.9	-48.9	2.00	281.45	49.9	
4	6377.4	10.71	281.45	6285.6	197.8	-976.4	0.00	0.00	996.2	
5	6912.9	0.00	0.00	6818.0	207.7	-1025.3	2.00	180.00	1046.1	
6	7962.9	0.00	0.00	7868.0	207.7	-1025.3	0.00	0.00	1046.1	Herren 6-0-33



Vertical Section at 281.45° (1200 ft/in)



**FORMATION TOP DETAILS**

TVDPath	MDPath	Formation
4157.0	4211.1	Sussex
4712.0	4775.9	Shannon
7027.0	7121.9	Niobrara
7283.0	7377.9	Codell
7718.0	7812.9	J Sand
7787.0	7881.9	A Marker

**CASING DETAILS**

TVD	MD	Name	Size
700.0	700.0	Surface	8.625
7868.0	7962.9	Production	4.500

**EnCana Corporation**  
Planning Report - Geographic

<b>Database:</b>	EDM	<b>Local Co-ordinate Reference:</b>	Well Herren 6-0-33
<b>Company:</b>	DJ/Paradox/WTX	<b>TVD Reference:</b>	WELL @ 4837.0ft (Original Well Elev)
<b>Project:</b>	Wattenberg	<b>MD Reference:</b>	WELL @ 4837.0ft (Original Well Elev)
<b>Site:</b>	New Drills	<b>North Reference:</b>	True
<b>Well:</b>	Herren 6-0-33	<b>Survey Calculation Method:</b>	Minimum Curvature
<b>Wellbore:</b>	Wellbore #1		
<b>Design:</b>	Herren 6-0-33		

<b>Project</b>	Wattenberg,		
<b>Map System:</b>	US State Plane 1983	<b>System Datum:</b>	Mean Sea Level
<b>Geo Datum:</b>	North American Datum 1983		
<b>Map Zone:</b>	Colorado Northern Zone		

<b>Site</b>	New Drills				
<b>Site Position:</b>		<b>Northing:</b>	1,252,450.66 ft	<b>Latitude:</b>	40° 1' 32.016 N
<b>From:</b>	Lat/Long	<b>Easting:</b>	3,120,627.66 ft	<b>Longitude:</b>	105° 4' 9.336 W
<b>Position Uncertainty:</b>	ft	<b>Slot Radius:</b>	in	<b>Grid Convergence:</b>	0.28 °

<b>Well</b>	Herren 6-0-33					
<b>Well Position</b>	<b>+N/-S</b>	59,412.4 ft	<b>Northing:</b>	1,312,214.70 ft	<b>Latitude:</b>	40° 11' 19.680 N
	<b>+E/-W</b>	51,080.9 ft	<b>Easting:</b>	3,171,296.46 ft	<b>Longitude:</b>	104° 53' 12.696 W
<b>Position Uncertainty</b>		ft	<b>Wellhead Elevation:</b>	ft	<b>Ground Level:</b>	4,824.0 ft

<b>Wellbore</b>	Wellbore #1				
<b>Magnetics</b>	<b>Model Name</b>	<b>Sample Date</b>	<b>Declination (°)</b>	<b>Dip Angle (°)</b>	<b>Field Strength (nT)</b>
	IGRF200510	12/31/2009	9.07	66.92	53,180

<b>Design</b>	Herren 6-0-33			
<b>Audit Notes:</b>				
<b>Version:</b>	<b>Phase:</b>	PROTOTYPE	<b>Tie On Depth:</b>	0.0
<b>Vertical Section:</b>	<b>Depth From (TVD) (ft)</b>	<b>+N/-S (ft)</b>	<b>+E/-W (ft)</b>	<b>Direction (°)</b>
	0.0	0.0	0.0	281.45

<b>Plan Sections</b>										
Measured Depth (ft)	Inclination (°)	Azimuth (°)	Vertical Depth (ft)	+N/-S (ft)	+E/-W (ft)	Dogleg Rate (°/100ft)	Build Rate (°/100ft)	Turn Rate (°/100ft)	TFO (°)	Target
0.0	0.00	0.00	0.0	0.0	0.0	0.00	0.00	0.00	0.00	
750.0	0.00	0.00	750.0	0.0	0.0	0.00	0.00	0.00	0.00	
1,285.5	10.71	281.45	1,282.4	9.9	-48.9	2.00	2.00	0.00	281.45	
6,377.4	10.71	281.45	6,285.6	197.8	-976.4	0.00	0.00	0.00	0.00	
6,912.9	0.00	0.00	6,818.0	207.7	-1,025.3	2.00	-2.00	0.00	180.00	
7,962.9	0.00	0.00	7,868.0	207.7	-1,025.3	0.00	0.00	0.00	0.00	Herren 6-0-33

**EnCana Corporation**  
 Planning Report - Geographic

<b>Database:</b>	EDM	<b>Local Co-ordinate Reference:</b>	Well Herren 6-0-33
<b>Company:</b>	DJ/Paradox/WTX	<b>TVD Reference:</b>	WELL @ 4837.0ft (Original Well Elev)
<b>Project:</b>	Wattenberg	<b>MD Reference:</b>	WELL @ 4837.0ft (Original Well Elev)
<b>Site:</b>	New Drills	<b>North Reference:</b>	True
<b>Well:</b>	Herren 6-0-33	<b>Survey Calculation Method:</b>	Minimum Curvature
<b>Wellbore:</b>	Wellbore #1		
<b>Design:</b>	Herren 6-0-33		

Planned Survey										
Measured Depth (ft)	Inclination (°)	Azimuth (°)	Vertical Depth (ft)	+N/-S (ft)	+E/-W (ft)	Map Northing (ft)	Map Easting (ft)	Latitude	Longitude	
0.0	0.00	0.00	0.0	0.0	0.0	1,312,214.70	3,171,296.46	40° 11' 19.680 N	104° 53' 12.696 W	
700.0	0.00	0.00	700.0	0.0	0.0	1,312,214.70	3,171,296.46	40° 11' 19.680 N	104° 53' 12.696 W	
<b>Surface</b>										
750.0	0.00	0.00	750.0	0.0	0.0	1,312,214.70	3,171,296.46	40° 11' 19.680 N	104° 53' 12.696 W	
1,285.5	10.71	281.45	1,282.4	9.9	-48.9	1,312,224.27	3,171,247.48	40° 11' 19.778 N	104° 53' 13.326 W	
4,211.1	10.71	281.45	4,157.0	117.8	-581.8	1,312,328.51	3,170,713.86	40° 11' 20.844 N	104° 53' 20.193 W	
<b>Sussex</b>										
4,775.9	10.71	281.45	4,712.0	138.7	-684.7	1,312,348.64	3,170,610.83	40° 11' 21.050 N	104° 53' 21.519 W	
<b>Shannon</b>										
6,377.4	10.71	281.45	6,285.6	197.8	-976.4	1,312,405.71	3,170,318.72	40° 11' 21.634 N	104° 53' 25.278 W	
6,912.9	0.00	0.00	6,818.0	207.7	-1,025.3	1,312,415.28	3,170,269.74	40° 11' 21.732 N	104° 53' 25.908 W	
7,121.9	0.00	0.00	7,027.0	207.7	-1,025.3	1,312,415.28	3,170,269.74	40° 11' 21.732 N	104° 53' 25.908 W	
<b>Niobrara</b>										
7,377.9	0.00	0.00	7,283.0	207.7	-1,025.3	1,312,415.28	3,170,269.74	40° 11' 21.732 N	104° 53' 25.908 W	
<b>Codell</b>										
7,812.9	0.00	0.00	7,718.0	207.7	-1,025.3	1,312,415.28	3,170,269.74	40° 11' 21.732 N	104° 53' 25.908 W	
<b>J Sand</b>										
7,881.9	0.00	0.00	7,787.0	207.7	-1,025.3	1,312,415.28	3,170,269.74	40° 11' 21.732 N	104° 53' 25.908 W	
<b>A Marker</b>										
7,962.9	0.00	0.00	7,868.0	207.7	-1,025.3	1,312,415.28	3,170,269.74	40° 11' 21.732 N	104° 53' 25.908 W	
<b>Production - Herren 6-0-33</b>										

Design Targets										
Target Name	Dip Angle (°)	Dip Dir. (°)	TVD (ft)	+N/-S (ft)	+E/-W (ft)	Northing (ft)	Easting (ft)	Latitude	Longitude	
Herren 6-0-33 - hit/miss target - Shape - Point	0.00	0.00	7,868.0	207.7	-1,025.3	1,312,415.28	3,170,269.74	40° 11' 21.732 N	104° 53' 25.908 W	

Casing Points						
Measured Depth (ft)	Vertical Depth (ft)	Name	Casing Diameter (in)	Hole Diameter (in)		
700.0	700.0	Surface	8.625	12.250		
7,962.9	7,868.0	Production	4.500	7.785		

Formations						
Measured Depth (ft)	Vertical Depth (ft)	Name	Lithology	Dip (°)	Dip Direction (°)	
4,211.1	4,157.0	Sussex		0.00		
4,775.9	4,712.0	Shannon		0.00		
7,121.9	7,027.0	Niobrara		0.00		
7,377.9	7,283.0	Codell		0.00		
7,812.9	7,718.0	J Sand		0.00		
7,881.9	7,787.0	A Marker		0.00		

**EnCana Corporation**  
Planning Report - Geographic

<b>Database:</b>	EDM	<b>Local Co-ordinate Reference:</b>	Well Herren 6-0-33
<b>Company:</b>	DJ/Paradox/WTX	<b>TVD Reference:</b>	WELL @ 4837.0ft (Original Well Elev)
<b>Project:</b>	Wattenberg	<b>MD Reference:</b>	WELL @ 4837.0ft (Original Well Elev)
<b>Site:</b>	New Drills	<b>North Reference:</b>	True
<b>Well:</b>	Herren 6-0-33	<b>Survey Calculation Method:</b>	Minimum Curvature
<b>Wellbore:</b>	Wellbore #1		
<b>Design:</b>	Herren 6-0-33		