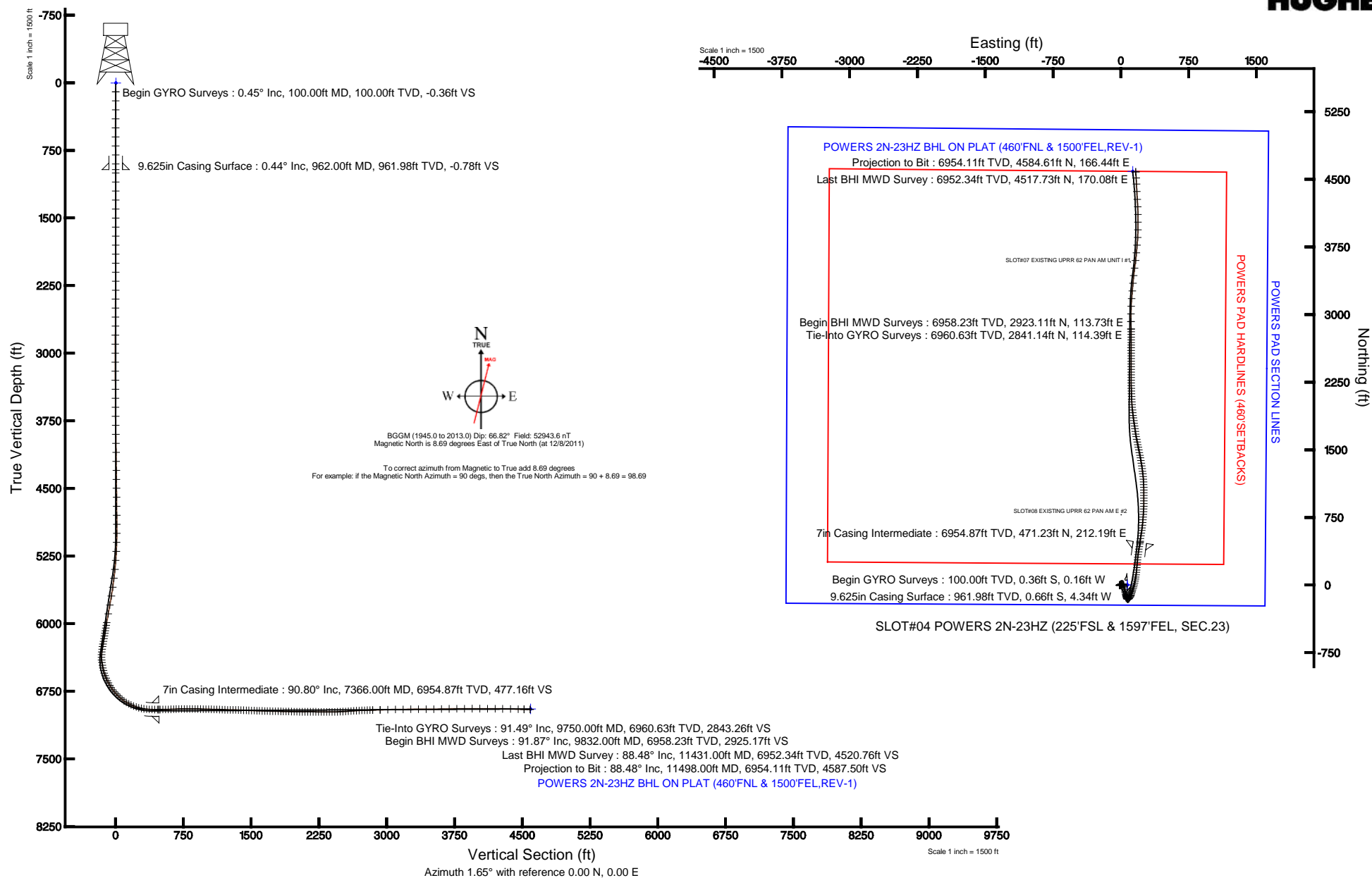


Location:	COLORADO	Slot:	SLOT#04 POWERS 2N-23HZ (225'FSL & 1597'FEL, SEC.23)
Field:	WELD COUNTY (KERR MCGEE)	Well:	POWERS 2N-23HZ
Facility:	SEC.23-T2N-R65W	Wellbore:	POWERS 2N-23HZ PWB

Plot reference wellpath is POWERS 2N-234Z (REV-I-0) PWP	
True vertical depths are referenced to XTREME 6 (RKB)	Grid System: NAD83 / Lambert Colorado SP, Northern Zone (501), US feet
Measured depths are referenced to XTREME 6 (RKB)	North Reference: True north
XTREME 6 (RKB) to Mean Sea Level: 4924 feet	Scale: True distance
Mean Sea Level to Mud line (At Slot: SLOT#04 POWERS 2N-234Z (225FSL & 1597FEL, SEC.23)): 0 feet	Depths are in feet
Coordinates are in feet referenced to Slot	Created by: wislet02 on 1/31/2012





Actual Wellpath Report

POWERS 2N-23HZ AWP

Page 1 of 3



REFERENCE WELLPATH IDENTIFICATION

Operator	ANADARKO E&P COMPANY LP	Slot	SLOT#04 POWERS 2N-23HZ (225'FSL & 1597'FEL, SEC.23)
Area	COLORADO	Well	POWERS 2N-23HZ
Field	WELD COUNTY (KERR MCGEE)	Wellbore	POWERS 2N-23HZ AWB
Facility	SEC.23-T2N-R65W		

REPORT SETUP INFORMATION

Projection System	NAD83 / Lambert Colorado SP, Northern Zone (501), US feet	Software System	WellArchitect® 3.0.2
North Reference	True	User	Wilsjef02
Scale	0.99996	Report Generated	1/31/2012 at 11:05:11 AM
Convergence at slot	0.56° East	Database/Source file	WA_ANADARKO/POWERS_2N-23HZ_AWB.xml

WELLPATH LOCATION

	Local coordinates		Grid coordinates		Geographic coordinates	
	North[ft]	East[ft]	Easting[US ft]	Northing[US ft]	Latitude	Longitude
Slot Location	0.61	-72.17	3244019.86	1286819.99	40°07'02.705"N	104°37'38.863"W
Facility Reference Pt			3244092.03	1286820.09	40°07'02.699"N	104°37'37.934"W
Field Reference Pt			3197771.84	1268891.29	40°04'09.600"N	104°47'36.000"W

WELLPATH DATUM

Calculation method	Minimum curvature	XTREME 6 (RKB) to Facility Vertical Datum	4924.00ft
Horizontal Reference Pt	Slot	XTREME 6 (RKB) to Mean Sea Level	4924.00ft
Vertical Reference Pt	XTREME 6 (RKB)	XTREME 6 (RKB) to Mud Line at Slot (SLOT#04 POWERS 2N-23HZ (225'FSL & 1597'FEL, SEC.23))	4924.00ft
MD Reference Pt	XTREME 6 (RKB)	Section Origin	N 0.00, E 0.00 ft
Field Vertical Reference	Mean Sea Level	Section Azimuth	1.65°



Actual Wellpath Report

POWERS 2N-23HZ AWP

Page 2 of 3



REFERENCE WELLPATH IDENTIFICATION			
Operator	ANADARKO E&P COMPANY LP	Slot	SLOT#04 POWERS 2N-23HZ (225'FSL & 1597'FEL, SEC.23)
Area	COLORADO	Well	POWERS 2N-23HZ
Field	WELD COUNTY (KERR MCGEE)	Wellbore	POWERS 2N-23HZ AWB
Facility	SEC.23-T2N-R65W		

WELLPATH DATA (22 stations)										
MD [ft]	Inclination [°]	Azimuth [°]	TVD [ft]	Vert Sect [ft]	North [ft]	East [ft]	Latitude	Longitude	DLS [°/100ft]	Comments
9750.00	91.493	359.402	6960.63	2843.26	2841.14	114.39	40°07'30.782"N	104°37'37.390"W	0.47	Tie-Into GYRO Surveys
9832.00	91.870	359.670	6958.23	2925.17	2923.11	113.73	40°07'31.591"N	104°37'37.399"W	0.56	Begin BHI MWD Surveys
9917.00	91.660	0.340	6955.61	3010.09	3008.06	113.73	40°07'32.431"N	104°37'37.399"W	0.83	
10002.00	90.760	2.250	6953.82	3095.07	3093.02	115.66	40°07'33.271"N	104°37'37.374"W	2.48	
10087.00	90.640	4.560	6952.78	3180.02	3177.86	120.70	40°07'34.109"N	104°37'37.309"W	2.72	
10173.00	90.460	4.390	6951.95	3265.91	3263.59	127.41	40°07'34.956"N	104°37'37.223"W	0.29	
10258.00	90.300	5.360	6951.39	3350.77	3348.28	134.64	40°07'35.793"N	104°37'37.130"W	1.16	
10343.00	90.150	6.400	6951.05	3435.54	3432.83	143.34	40°07'36.629"N	104°37'37.018"W	1.24	
10428.00	90.330	7.710	6950.70	3520.16	3517.18	153.78	40°07'37.462"N	104°37'36.883"W	1.56	
10513.00	91.330	6.420	6949.47	3604.77	3601.53	164.24	40°07'38.296"N	104°37'36.749"W	1.92	
10599.00	91.200	5.470	6947.57	3690.50	3687.04	173.14	40°07'39.141"N	104°37'36.634"W	1.11	
10684.00	90.400	5.060	6946.38	3775.33	3771.68	180.94	40°07'39.977"N	104°37'36.534"W	1.06	
10769.00	90.800	3.590	6945.49	3860.23	3856.43	187.35	40°07'40.815"N	104°37'36.451"W	1.79	
10854.00	89.870	0.570	6944.99	3945.21	3941.36	190.43	40°07'41.654"N	104°37'36.411"W	3.72	
10939.00	90.090	0.370	6945.02	4030.19	4026.36	191.13	40°07'42.494"N	104°37'36.402"W	0.35	
11025.00	89.690	359.160	6945.19	4116.15	4112.35	190.78	40°07'43.344"N	104°37'36.407"W	1.48	
11109.00	89.470	356.550	6945.80	4199.95	4196.28	187.64	40°07'44.173"N	104°37'36.447"W	3.12	
11193.00	88.520	356.870	6947.28	4283.62	4280.13	182.82	40°07'45.002"N	104°37'36.509"W	1.19	
11279.00	89.380	357.440	6948.85	4369.34	4366.01	178.55	40°07'45.850"N	104°37'36.564"W	1.20	
11364.00	88.390	356.420	6950.51	4454.04	4450.87	174.00	40°07'46.689"N	104°37'36.623"W	1.67	
11431.00	88.480	356.880	6952.34	4520.76	4517.73	170.08	40°07'47.350"N	104°37'36.673"W	0.70	Last BHI MWD Survey
11498.00	88.480	356.880	6954.11	4587.50	4584.61	166.44	40°07'48.011"N	104°37'36.720"W	0.00	Projection to Bit

HOLE & CASING SECTIONS - Ref Wellbore: POWERS 2N-23HZ AWB Ref Wellpath: POWERS 2N-23HZ AWP									
String/Diameter	Start MD [ft]	End MD [ft]	Interval [ft]	Start TVD [ft]	End TVD [ft]	Start N/S [ft]	Start E/W [ft]	End N/S [ft]	End E/W [ft]
13.5in Open Hole	16.00	962.00	946.00	16.00	961.98	-0.36	-0.16	-0.66	-4.34
9.625in Casing Surface	16.00	962.00	946.00	16.00	961.98	-0.36	-0.16	-0.66	-4.34
8.75in Open Hole	962.00	7376.00	6414.00	961.98	6954.73	-0.66	-4.34	481.12	213.69
7in Casing Intermediate	16.00	7366.00	7350.00	16.00	6954.87	-0.36	-0.16	471.23	212.19
6.125in Open Hole	7366.00	11498.00	4132.00	6954.87	6954.11	471.23	212.19	4584.61	166.44

TARGETS									
Name	MD [ft]	TVD [ft]	North [ft]	East [ft]	Grid East [US ft]	Grid North [US ft]	Latitude	Longitude	Shape
POWERS PAD SECTION LINES		0.00	-0.71	72.17	3244092.03	1286819.99	40°07'02.698"N	104°37'37.934"W	polygon
POWERS 2N-23HZ BHL ON PLAT (460'FNL & 1500'FEL,REV-1)		6948.00	4590.42	132.51	3244107.20	1291411.29	40°07'48.068"N	104°37'37.157"W	point
POWERS PAD HARDLINES (460'SETBACKS)		7172.00	-0.71	72.17	3244092.03	1286819.99	40°07'02.698"N	104°37'37.934"W	polygon

WELLPATH COMPOSITION - Ref Wellbore: POWERS 2N-23HZ AWB Ref Wellpath: POWERS 2N-23HZ AWP					
Start MD [ft]	End MD [ft]	Positional Uncertainty Model	Log Name/Comment	Wellbore	
100.00	9750.00	Gyrodatta standard - Continuous gyro	GYRODATA SURVEY<200-9750>	POWERS 2N-23HZ AWB	
9750.00	11431.00	OnTrak (Standard)	BHI MWD SURVEY 6 1/8" HOLE <9832-11431>	POWERS 2N-23HZ AWB	
11431.00	11498.00	Blind Drilling (std)	Projection to bit	POWERS 2N-23HZ AWB	



Actual Wellpath Report

POWERS 2N-23HZ AWP

Page 3 of 3



REFERENCE WELLPATH IDENTIFICATION

Operator	ANADARKO E&P COMPANY LP	Slot	SLOT#04 POWERS 2N-23HZ (225'FSL & 1597'FEL, SEC.23)
Area	COLORADO	Well	POWERS 2N-23HZ
Field	WELD COUNTY (KERR MCGEE)	Wellbore	POWERS 2N-23HZ AWB
Facility	SEC.23-T2N-R65W		

WELLPATH COMMENTS

MD [ft]	Inclination [°]	Azimuth [°]	TVD [ft]	Comment
100.00	0.447	204.024	100.00	Begin GYRO Surveys
7366.00	90.796	8.785	6954.87	7" Casin Point
9750.00	91.493	359.402	6960.63	Tie-Into GYRO Surveys
9832.00	91.870	359.670	6958.23	Begin BHI MWD Surveys
11431.00	88.480	356.880	6952.34	Last BHI MWD Survey
11498.00	88.480	356.880	6954.11	Projection to Bit