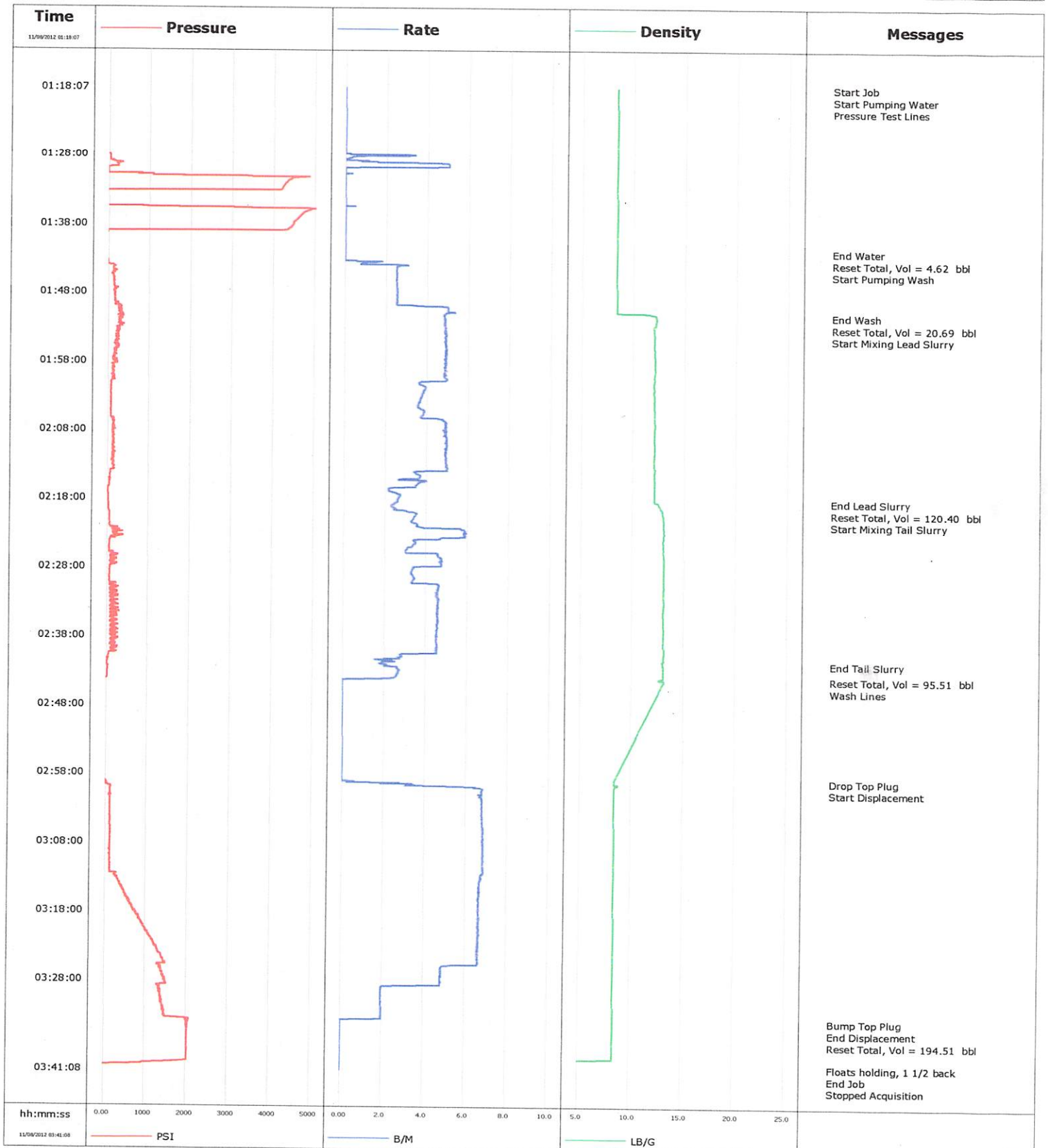


				Customer Nighthawk				Job Number CDXM-00006							
Well Whistler 6-22				Location (legal)				Schlumberger Location				Job Start Nov/07/2012			
Field Unesignat			Formation Name/Type Dirty-Sandstone			Deviation		Bit Size		Well MD		Well TVD			
County			State/Province Colorado			BHP		BHST		BHCT		Pore Press. Gradient			
Well Master			API/UWI												
Rig Name Ensign 17		Drilled For Oil		Service Via Land		Casing/Liner									
						Depth, ft		Size, in		Weight, lb/ft		Grade			
Offshore Zone		Well Class New		Well Type Development		8476.0		5.500		17.0		N80			
						0.0		0.000		0.0					
Drilling Fluid Type			Max. Density		Plastic Viscosity		Tubing/Drill Pipe								
							Depth,		Size,		Weight,		Grade		
Service Line Cementing		Job Type 5 1/2 LS													
Max. Allowed Tub. Press		Max. Allowed Ann. Press		WH Connection Single Cement head		Perforations/Open Hole									
						Top,		Bottom,				No. of Shots			
												Diameter			
						Treat Down Casing		Displacement 194.0 bbl		Packer Type		Packer Depth			
						Tubing Vol.		Casing Vol.		Annular Vol.		Openhole Vol.			
Casing/Tubing Secured <input checked="" type="checkbox"/>				1 Hole Vol. Circulated prior to Cement <input checked="" type="checkbox"/>				Casing Tools				Squeeze Job			
Lift Pressure								Shoe Type				Squeeze Type			
Pipe Rotated <input type="checkbox"/>				Pipe Reciprocated <input type="checkbox"/>				Shoe Depth				Tool Type			
No. Centralizers				Top Plugs 1		Bottom Plugs		Stage Tool Type				Tool Depth			
Cement Head Type								Stage Tool Depth				Tail Pipe Size			
Job Scheduled For Nov/07/2012		Arrived on Location Nov/07/2012		Leave Location Nov/07/2012		Collar Type				Tail Pipe Depth					
						Collar Depth				Sqz. Total Vol.					
Date	Time 24-hr clock	Treating Pressure PSI	Flow Rate B/M	Density LB/G	Volume BBL	Message									
11/08/2012	00:20:25					Started Acquisition									
11/08/2012	01:18:07					Start Job									
11/08/2012	01:18:07	-19	0.0	8.39	0.0										
11/08/2012	01:18:10					Start Pumping Water									
11/08/2012	01:18:10	-20	0.0	8.39	0.0										
11/08/2012	01:18:12					Pressure Test Lines									
11/08/2012	01:18:12	-19	0.0	8.39	0.0										
11/08/2012	01:19:05	-19	0.0	8.39	0.0										
11/08/2012	01:21:45	-20	0.0	8.39	0.0										
11/08/2012	01:24:25	-20	0.0	8.39	0.0										
11/08/2012	01:27:05	-23	0.0	8.39	0.0										
11/08/2012	01:29:45	227	5.0	8.39	4.2										
11/08/2012	01:32:25	4268	0.0	8.39	4.6										
11/08/2012	01:35:05	-19	0.0	8.39	4.6										
11/08/2012	01:37:45	4501	0.0	8.39	4.6										
11/08/2012	01:40:25	-17	0.0	8.39	4.6										
11/08/2012	01:41:59					End Water									
11/08/2012	01:41:59	-20	0.0	8.39	4.6										
11/08/2012	01:42:00					Reset Total, Vol = 4.62 bbl									
11/08/2012	01:42:00	-20	0.0	8.39	4.6										
11/08/2012	01:42:05					Start Pumping Wash									

Well			Field	Job Start	Customer	Job Number
Whistler 6-22			Signat	Nov/07/2012	nt	CDXM-00006
Date	Time 24-hr clock	Treating Pressure PSI	Flow Rate B/M	Density LB/G	Volume BBL	Message
11/08/2012	01:43:05	-22	0.0	8.39	0.0	
11/08/2012	01:45:45	138	2.5	8.39	5.1	
11/08/2012	01:48:25	157	2.5	8.39	11.9	
11/08/2012	01:51:05	338	4.9	11.98	21.5	
11/08/2012	01:51:19					End Wash
11/08/2012	01:51:19	284	4.8	12.22	22.6	
11/08/2012	01:51:20					Reset Total, Vol = 20.69 bbl
11/08/2012	01:51:20	284	4.8	12.22	22.7	
11/08/2012	01:52:45					Start Mixing Lead Slurry
11/08/2012	01:52:45	319	4.9	12.07	6.9	
11/08/2012	01:53:45	270	4.9	12.03	11.8	
11/08/2012	01:56:25	179	5.0	12.12	24.8	
11/08/2012	01:59:05	108	4.9	12.22	37.9	
11/08/2012	02:01:45	81	3.9	12.03	49.9	
11/08/2012	02:04:25	83	3.5	12.08	59.9	
11/08/2012	02:07:05	132	4.9	12.14	70.8	
11/08/2012	02:09:45	149	5.0	12.14	83.9	
11/08/2012	02:12:25	143	5.0	12.13	97.1	
11/08/2012	02:15:05	43	2.9	12.10	108.8	
11/08/2012	02:17:45	26	2.7	12.10	116.5	
11/08/2012	02:18:16					End Lead Slurry
11/08/2012	02:18:16	32	2.6	12.13	117.9	
11/08/2012	02:18:28					Reset Total, Vol = 120.40 bbl
11/08/2012	02:18:28	34	2.6	12.44	118.4	
11/08/2012	02:19:40					Start Mixing Tail Slurry
11/08/2012	02:19:40	49	2.9	12.90	2.9	
11/08/2012	02:20:25	68	3.5	13.00	5.4	
11/08/2012	02:23:05	148	5.8	13.10	16.7	
11/08/2012	02:25:45	69	3.0	13.08	27.1	
11/08/2012	02:28:25	78	3.3	13.07	38.6	
11/08/2012	02:31:05	103	4.6	13.07	48.6	
11/08/2012	02:33:45	179	4.6	13.07	60.8	
11/08/2012	02:36:25	110	4.6	13.08	73.0	
11/08/2012	02:39:05	237	4.6	13.08	85.1	
11/08/2012	02:41:45	24	1.9	12.97	94.6	
11/08/2012	02:41:51					End Tail Slurry
11/08/2012	02:41:51	11	1.8	12.97	94.8	
11/08/2012	02:44:11					Reset Total, Vol = 95.51 bbl
11/08/2012	02:44:11	-17	1.1	12.67	100.5	
11/08/2012	02:44:24					Wash Lines
11/08/2012	02:44:24	-21	0.0	13.18	0.0	
11/08/2012	02:44:25	-21	0.0	13.18	0.0	
11/08/2012	02:58:58					Drop Top Plug
11/08/2012	02:58:58	-23	0.0	8.39	0.0	
11/08/2012	02:59:01					Start Displacement
11/08/2012	02:59:01	-21	0.0	8.39	0.0	
11/08/2012	03:00:25	118	6.8	8.39	5.7	
11/08/2012	03:03:05	114	6.8	8.40	23.8	
11/08/2012	03:05:45	121	6.8	8.39	41.9	
11/08/2012	03:08:25	121	6.8	8.39	60.1	
11/08/2012	03:11:05	132	6.8	8.39	78.3	
11/08/2012	03:13:45	336	6.7	8.40	96.5	
11/08/2012	03:16:25	579	6.7	8.39	114.3	
11/08/2012	03:19:05	823	6.7	8.39	132.0	

Well	Whistler 6-22	Client	NightHawk
Field	Unesignat	SIR No.	CDXM-00006
Engineer		Job Type	5 1/2 LS
Country	United States	Job Date	11-07-2012



Well			Field	Job Start	Customer	Job Number
Whistler 6-22			signat	Nov/07/2012	nt	CDXM-00006
Date	Time 24-hr clock	Treating Pressure PSI	Flow Rate B/M	Density LB/G	Volume BBL	Message
11/08/2012	03:24:25	1377	6.6	8.39	167.4	
11/08/2012	03:27:05	1414	4.9	8.39	182.7	
11/08/2012	03:29:45	1373	2.0	8.39	192.8	
11/08/2012	03:32:25	1455	2.0	8.39	198.0	
11/08/2012	03:33:52					Bump Top Plug
11/08/2012	03:33:52	2044	0.0	8.39	200.5	
11/08/2012	03:33:54					End Displacement
11/08/2012	03:33:54	2049	0.0	8.39	200.5	
11/08/2012	03:33:57					Reset Total, Vol = 194.51 bbl
11/08/2012	03:33:57	1987	0.0	8.39	200.5	
11/08/2012	03:35:05	2036	0.0	8.39	0.0	
11/08/2012	03:37:45	2030	0.0	8.39	0.0	
11/08/2012	03:40:25	163	0.0	0.01	0.0	
11/08/2012	03:40:39					Floats holding, 1 1/2 back
11/08/2012	03:40:39	-26	0.0	0.01	0.0	
11/08/2012	03:41:05					End Job
11/08/2012	03:41:05	-26	0.0	0.01	0.0	

Post Job Summary

Average Pump Rates, bbl/min				Volume of Fluid Injected, bbl			
Slurry 4.4	N2	Mud 0.0	Maximum Rate 7.3	Total Slurry 215.0	Mud 0.0	Spacer 0.0	N2
Treating Pressure Summary, psi				Breakdown Fluid			
Maximum 5054	Final -26	Average 593	Bump Plug to Breakdown	Type	Volume	Density	
Avg. N2 Percent		Designed Slurry Volume 213.0 bbl	Displacement 194.0 bbl	Mix Water Temp	Cement Circulated to Surface? <input type="checkbox"/>	Volume	
					Washed Thru Perfs <input type="checkbox"/>	To	
Customer or Authorized Representative			Schlumberger Supervisor Anthony Fowler		Circulation Lost <input type="checkbox"/>	Job Completed <input checked="" type="checkbox"/>	