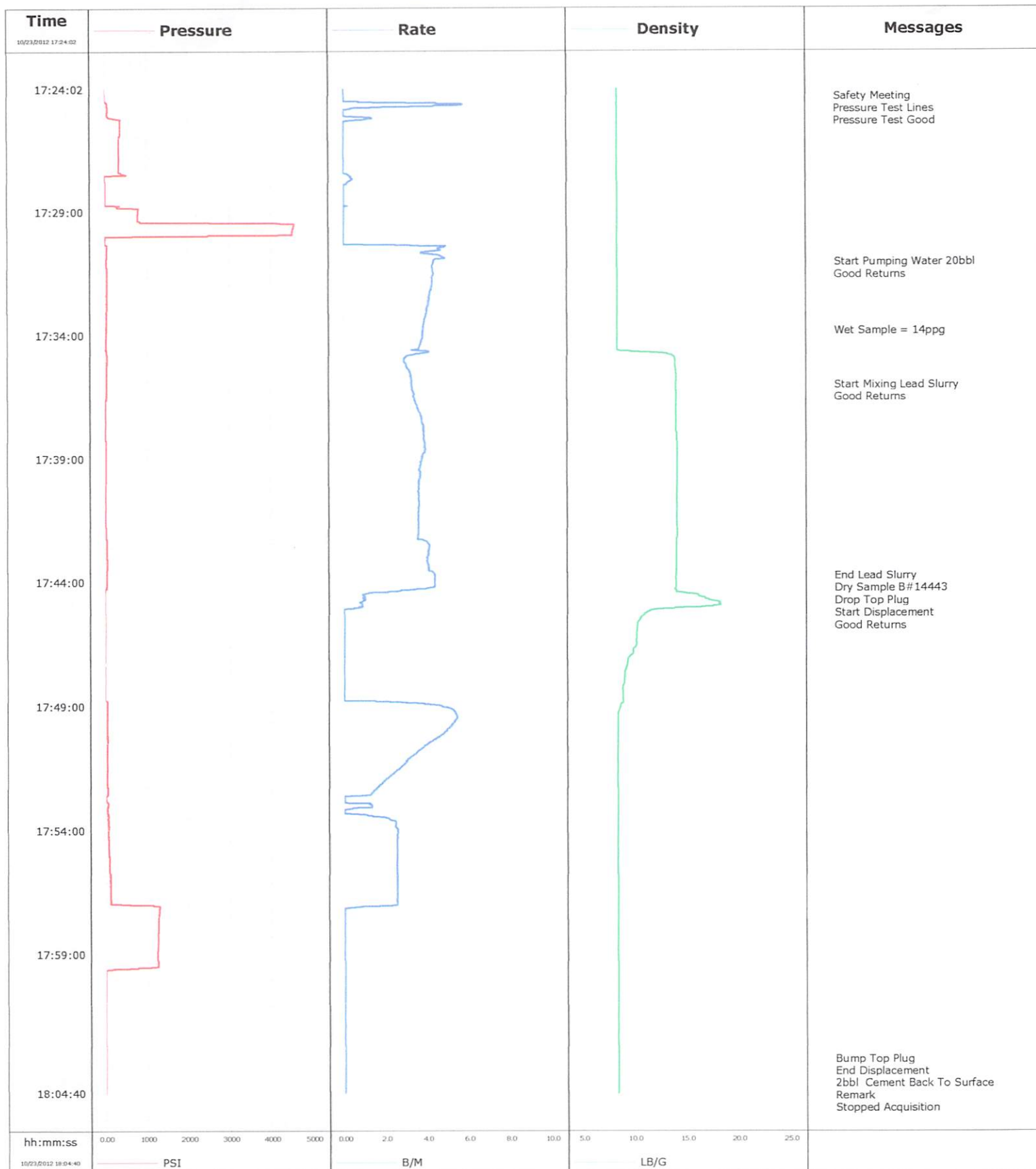


Well	Snowbird 9-15	Client	Nighthawk Production
Field	DJ	SIR No.	C8FL-00222
Engineer	Travis Willardson	Job Type	8 5/8 Surface
Country	United States	Job Date	10-23-2012



Customer Nighthawk Production				Job Number C8FL-00222							
Well Snowbird 9-15 Snowbird 9-15			Location (legal)			Schlumberger Location GCO		Job Start Oct/23/2012			
Field DJ		Formation Name/Type Dirty-Sandstone		Deviation		Bit Size 12.3 in		Well MD 400.0 ft		Well TVD 400.0 ft	
County Lincoln		State/Province Colorado		BHP		BHST 83 degF		BHCT 80 degF		Pore Press. Gradient	
Well Master 631087132		API/UWI 0507306358									
Rig Name Spud Rig		Drilled For Oil		Service Via Land		Casing/Liner					
						Depth, ft		Size, in		Weight, lb/ft	
										Grade	
										Thread	
Offshore Zone		Well Class New		Well Type Development		400.0		8.630		24.0	
						0.0		0.000		0.0	
Drilling Fluid Type		Max. Density		Plastic Viscosity		Tubing/Drill Pipe					
						Depth,		Size,		Weight,	
										Grade	
										Thread	
Service Line Cementing		Job Type 8 5/8 Surface									
Max. Allowed Tub. Press 1125 psi		Max. Allowed Ann. Press		WH Connection Single Cement head		Perforations/Open Hole					
						Top,		Bottom,		No. of Shots	
										Total Interval	
										Diameter	
						Treat Down Casing		Displacement 25.0 bbl		Packer Type	
										Packer Depth	
						Tubing Vol.		Casing Vol.		Annular Vol.	
										Openhole Vol.	
Casing/Tubing Secured <input checked="" type="checkbox"/>		1 Hole Vol. Circulated prior to Cement <input type="checkbox"/>				Casing Tools				Squeeze Job	
Lift Pressure						Shoe Type Float				Squeeze Type	
Pipe Rotated <input type="checkbox"/>		Pipe Reciprocated <input type="checkbox"/>				Shoe Depth 400.0 ft				Tool Type	
No. Centralizers		Top Plugs 1		Bottom Plugs		Stage Tool Type				Tool Depth	
Cement Head Type Single						Stage Tool Depth 300.0 ft				Tail Pipe Size	
Job Scheduled For Oct/23/2012		Arrived on Location Oct/23/2012		Leave Location Oct/23/2012		Collar Type Float				Tail Pipe Depth	
						Collar Depth 400.0 ft				Sqz. Total Vol.	
Date	Time 24-hr clock	Treating Pressure PSI	Flow Rate B/M	Density LB/G	Volume BBL	Message					
10/23/2012	17:09:59					Started Acquisition					
10/23/2012	17:24:02	-4	0.0	8.39	0.0						
10/23/2012	17:24:22					Safety Meeting					
10/23/2012	17:24:22	-4	0.0	8.37	0.0						
10/23/2012	17:24:24					Pressure Test Lines					
10/23/2012	17:24:24	-4	0.0	8.37	0.0						
10/23/2012	17:24:31					Pressure Test Good					
10/23/2012	17:24:31	-4	0.0	8.37	0.0						
10/23/2012	17:24:59	62	0.0	8.36	1.0						
10/23/2012	17:29:59	2487	0.0	8.36	1.3						
10/23/2012	17:31:03					Start Pumping Water 20bbl					
10/23/2012	17:31:03	48	4.3	8.36	4.4						
10/23/2012	17:31:07					Good Returns					
10/23/2012	17:31:07	49	4.3	8.36	4.7						
10/23/2012	17:33:48					Wet Sample = 14ppg					
10/23/2012	17:33:48	37	3.8	8.36	15.7						
10/23/2012	17:34:59	38	2.9	13.87	19.9						
10/23/2012	17:36:00					Start Mixing Lead Slurry					
10/23/2012	17:36:00	29	3.2	13.96	23.1						
10/23/2012	17:36:22					Good Returns					
10/23/2012	17:36:22	27	3.4	14.02	24.3						

Well Snowbird 9-15 Snowbird 9-15			Field DJ	Job Start Oct/23/2012	Customer Nigh Production	Job Number C8FL-00222
Date	Time 24-hr clock	Treating Pressure PSI	Flow Rate B/M	Density LB/G	Volume BSL	Message
10/23/2012	17:43:44					End Lead Slurry
10/23/2012	17:43:44	46	4.4	13.99	51.9	
10/23/2012	17:43:50					Dry Sample B#14443
10/23/2012	17:43:50	46	4.4	13.99	52.3	
10/23/2012	17:43:54					Drop Top Plug
10/23/2012	17:43:54	48	4.4	14.00	52.6	
10/23/2012	17:43:56					Start Displacement
10/23/2012	17:43:56	47	4.4	14.00	52.8	
10/23/2012	17:44:05					Good Returns
10/23/2012	17:44:05	47	4.4	14.00	53.4	
10/23/2012	17:44:59	-3	0.7	16.40	55.1	
10/23/2012	17:49:59	36	4.9	8.36	61.1	
10/23/2012	17:54:59	83	2.5	8.36	73.0	
10/23/2012	17:59:59	-10	0.0	8.37	78.3	
10/23/2012	18:03:17					Bump Top Plug
10/23/2012	18:03:17	-8	0.0	8.37	78.3	
10/23/2012	18:03:19					End Displacement
10/23/2012	18:03:19	-8	0.0	8.37	78.3	
10/23/2012	18:03:25					2bbl Cement Back To Surface
10/23/2012	18:03:25	-9	0.0	8.37	78.3	
10/23/2012	18:03:29					Remark
10/23/2012	18:03:29	-9	0.0	8.37	78.3	

Post Job Summary

Average Pump Rates, bbl/min				Volume of Fluid Injected, bbl			
Slurry 3.3	N2	Mud 0.0	Maximum Rate 5.7	Total Slurry 78.3	Mud 0.0	Spacer 0.0	N2
Treating Pressure Summary, psi				Breakdown Fluid			
Maximum 4555	Final -9	Average 255	Bump Plug to 1200	Breakdown	Type	Volume	Density
Avg. N2 Percent		Designed Slurry Volume 36.0 bbl	Displacement 25.7 bbl	Mix Water Temp 56 degF	Cement Circulated to Surface? <input checked="" type="checkbox"/>	Volume 2.0 bbl	
					Washed Three Perfs <input type="checkbox"/>	To	
Customer or Authorized Representative Jim Wier			Schlumberger Supervisor Travis Willardson			Circulation Lost <input type="checkbox"/>	Job Completed <input checked="" type="checkbox"/>
						-	-