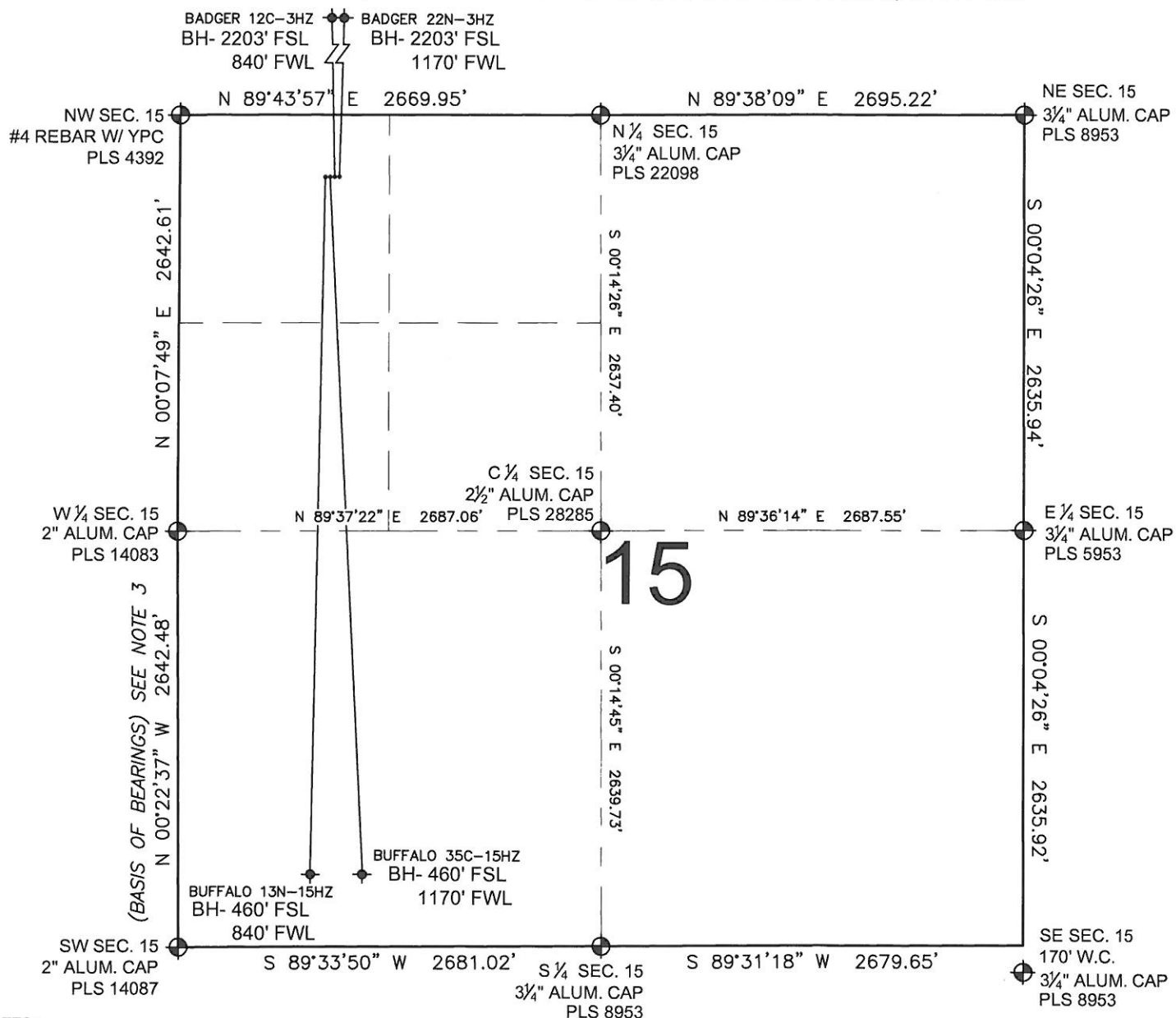


MULTI-WELL PLAN

BUFFALO 35C-15HZ

SECTION 15, TOWNSHIP 1 NORTH, RANGE 68 WEST, 6TH P.M.



NOTES:

1. THIS FIELD SURVEY CONFORMS TO THE MINIMUM STANDARDS SET BY THE C.O.G.C.C., RULE NO. 215
2. HORIZONTAL POSITIONS AND ORTHOMETRIC ELEVATIONS SHOWN AT THE WELL HEAD, ARE BASED ON GPS-RTK POSITIONS DERIVED FROM MINIMUM 2-HOUR STATIC OBSERVATIONS CORRECTED BY THE NATIONAL GEODETIC SURVEY ONLINE POSITIONING USER SERVICE, O.P.U.S. DATUM: HORIZONTAL = NAD83/2007, VERTICAL = NAVD88
3. THE BASIS OF BEARINGS ARE STATE PLANE COORDINATE SYSTEM GRID BEARINGS SHOWN HEREON BETWEEN THE DESCRIBED MONUMENTS SHOWN HEREON.
4. GRID DISTANCES ARE SHOWN, AS MEASURED IN THE FIELD, WITH TIES TO WELLS MEASURED PERPENDICULAR TO SECTION LINES.

LEGEND

- = EXISTING MONUMENT
 = BOTTOM HOLE
 BH = BOTTOM HOLE
 = PROPOSED WELL
 = EXISTING WELL

NOTES:

BUFFALO 13N-15HZ TO BE AT 393' FNL, 929' FWL.
 BOTTOM HOLE AT 460' FSL & 840' FWL.
 BUFFALO 35C-15HZ TO BE AT 393' FNL, 959' FWL.
 BOTTOM HOLE AT 460' FSL & 1170' FWL.
 BADGER 12C-3HZ TO BE AT 392' FNL, 989' FWL.
 BOTTOM HOLE AT 2203' FSL & 840' FWL.
 BADGER 22N-3HZ TO BE AT 392' FNL, 1019' FWL.
 BOTTOM HOLE AT 2203' FSL & 1170' FWL.

PREPARED BY:

PFS

Petroleum Field Services, LLC
1801 W. 13th Ave.
Denver, CO 80204



KERR-MCGEE OIL & GAS ONSHORE LP

FIELD DATE:
04-20-12

DRAWING DATE:
05-14-12

BY: SMF CHECK: KAG

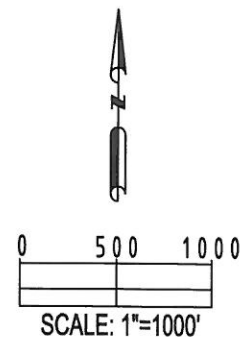
PAD NAME:

BUFFALO & BADGER 2-4 PAD

SURFACE LOCATION:

WELD COUNTY, COLORADO

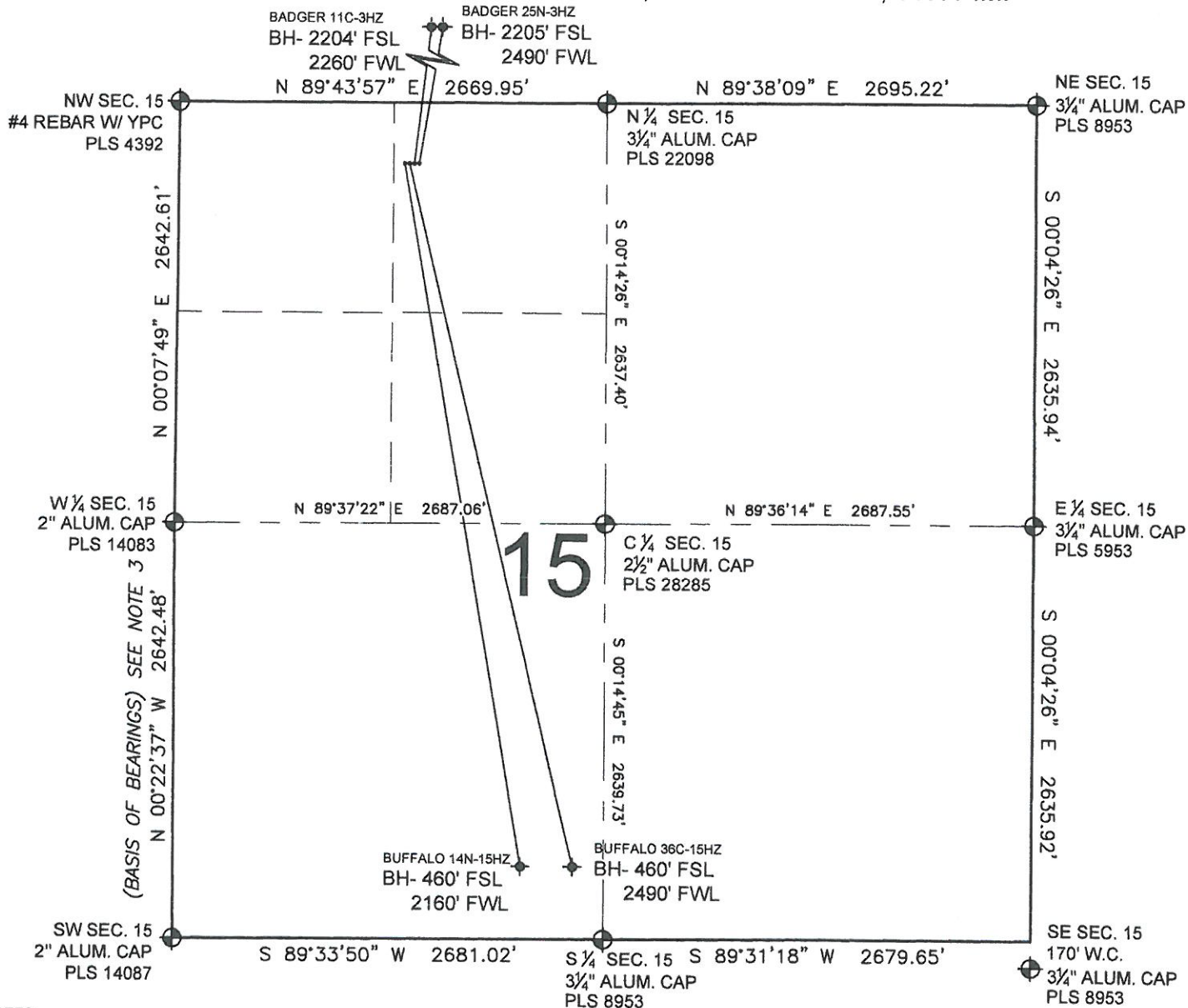
NW 1/4 NW 1/4, SEC. 15, T1N, R68W, 6TH P.M.



MULTI-WELL PLAN

BUFFALO 35C-15HZ

SECTION 15, TOWNSHIP 1 NORTH, RANGE 68 WEST, 6TH P.M.



NOTES:

1. THIS FIELD SURVEY CONFORMS TO THE MINIMUM STANDARDS SET BY THE C.O.G.C.C., RULE NO. 215
2. HORIZONTAL POSITIONS AND ORTHOMETRIC ELEVATIONS SHOWN AT THE WELL HEAD, ARE BASED ON GPS-RTK POSITIONS DERIVED FROM MINIMUM 2-HOUR STATIC OBSERVATIONS CORRECTED BY THE NATIONAL GEODETIC SURVEY ONLINE POSITIONING USER SERVICE, O.P.U.S. DATUM: HORIZONTAL = NAD83/2007, VERTICAL = NAVD88
3. THE BASIS OF BEARINGS ARE STATE PLANE COORDINATE SYSTEM GRID BEARINGS SHOWN HEREON BETWEEN THE DESCRIBED MONUMENTS SHOWN HEREON.
4. GRID DISTANCES ARE SHOWN, AS MEASURED IN THE FIELD, WITH TIES TO WELLS MEASURED PERPENDICULAR TO SECTION LINES.

LEGEND

- ⊕ = EXISTING MONUMENT
- ⬤ = PROPOSED WELL
- ⬤ = BOTTOM HOLE
- ⬤ = EXISTING WELL
- BH = BOTTOM HOLE

NOTES:

BUFFALO 14N-15HZ TO BE AT 384' FNL, 1409' FWL.
 BOTTOM HOLE AT 460' FSL & 2160' FWL.
 BUFFALO 36C-15HZ TO BE AT 383' FNL, 1439' FWL.
 BOTTOM HOLE AT 460' FSL & 2490' FWL.
 BADGER 11C-3HZ TO BE AT 383' FNL, 1469' FWL.
 BOTTOM HOLE AT 2204' FSL & 2260' FWL.
 BADGER 25N-3HZ TO BE AT 382' FNL, 1499' FWL.
 BOTTOM HOLE AT 2205' FSL & 2490' FWL.

PREPARED BY:

PFS

Petroleum Field Services, LLC
 1801 W. 13th Ave.
 Denver, CO 80204

KERR-MCGEE OIL & GAS ONSHORE LP

FIELD DATE:
04-20-12

DRAWING DATE:
10-23-12

BY: SMF
 CHECKED: TJN

PAD NAME:

BUFFALO & BADGER 4-4 PAD

SURFACE LOCATION:

NE 1/4 NW 1/4, SEC.15, T1N, R68W, 6TH P.M.
 WELD COUNTY, COLORADO

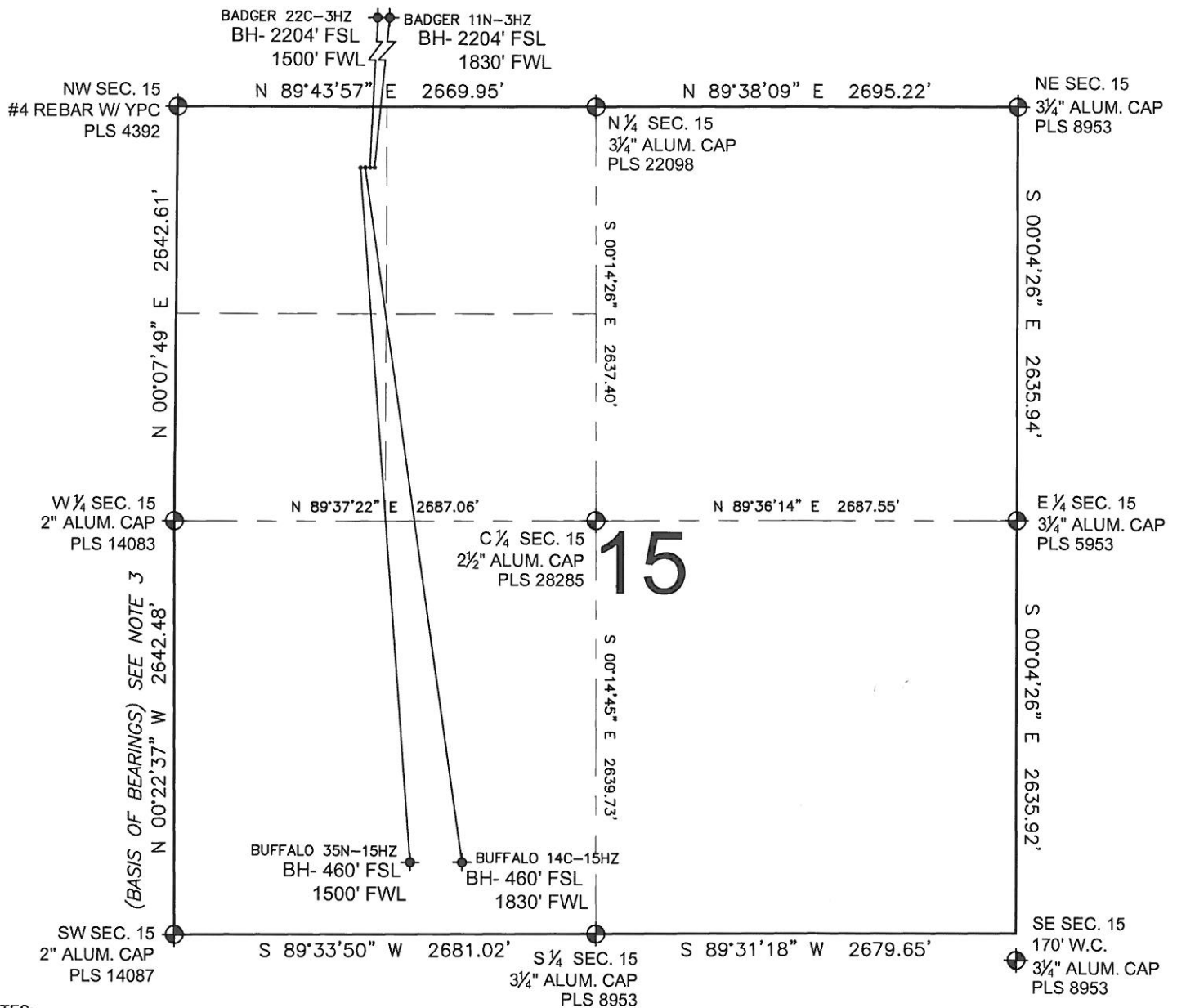


0 500 1000
 SCALE: 1"=1000'

MULTI-WELL PLAN

BUFFALO 35C-15HZ

SECTION 15, TOWNSHIP 1 NORTH, RANGE 68 WEST, 6TH P.M.



NOTES:

1. THIS FIELD SURVEY CONFORMS TO THE MINIMUM STANDARDS SET BY THE C.O.G.C.C., RULE NO. 215
2. HORIZONTAL POSITIONS AND ORTHOMETRIC ELEVATIONS SHOWN AT THE WELL HEAD, ARE BASED ON GPS-RTK POSITIONS DERIVED FROM MINIMUM 2-HOUR STATIC OBSERVATIONS CORRECTED BY THE NATIONAL GEODETIC SURVEY ONLINE POSITIONING USER SERVICE, O.P.U.S. DATUM: HORIZONTAL = NAD83/2007, VERTICAL = NAVD88
3. THE BASIS OF BEARINGS ARE STATE PLANE COORDINATE SYSTEM GRID BEARINGS SHOWN HEREON BETWEEN THE DESCRIBED MONUMENTS SHOWN HEREON.
4. GRID DISTANCES ARE SHOWN, AS MEASURED IN THE FIELD, WITH TIES TO WELLS MEASURED PERPENDICULAR TO SECTION LINES.

LEGEND

- = EXISTING MONUMENT = BOTTOM HOLE BH = BOTTOM HOLE
 = PROPOSED WELL = EXISTING WELL

NOTES:

- BUFFALO 35N-15HZ TO BE AT 389' FNL, 1169' FWL.
 BOTTOM HOLE AT 460' FSL & 1500' FWL.
 BUFFALO 14C-15HZ TO BE AT 388' FNL, 1199' FWL.
 BOTTOM HOLE AT 460' FSL & 1830' FWL.
 BADGER 22C-3HZ TO BE AT 387' FNL, 1229' FWL.
 BOTTOM HOLE AT 2204' FSL & 1500' FWL.
 BADGER 11N-3HZ TO BE AT 387' FNL, 1259' FWL.
 BOTTOM HOLE AT 2204' FSL & 1830' FWL.

PREPARED BY:



KERR-MCGEE OIL & GAS ONSHORE LP

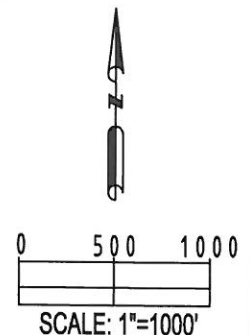
FIELD DATE:
04-20-12

PAD NAME:
BUFFALO & BADGER 3-4 PAD

DRAWING DATE:
05-14-12

SURFACE LOCATION:
WELD COUNTY, COLORADO
NW 1/4 NW 1/4, SEC. 15, T1N, R68W, 6TH P.M.

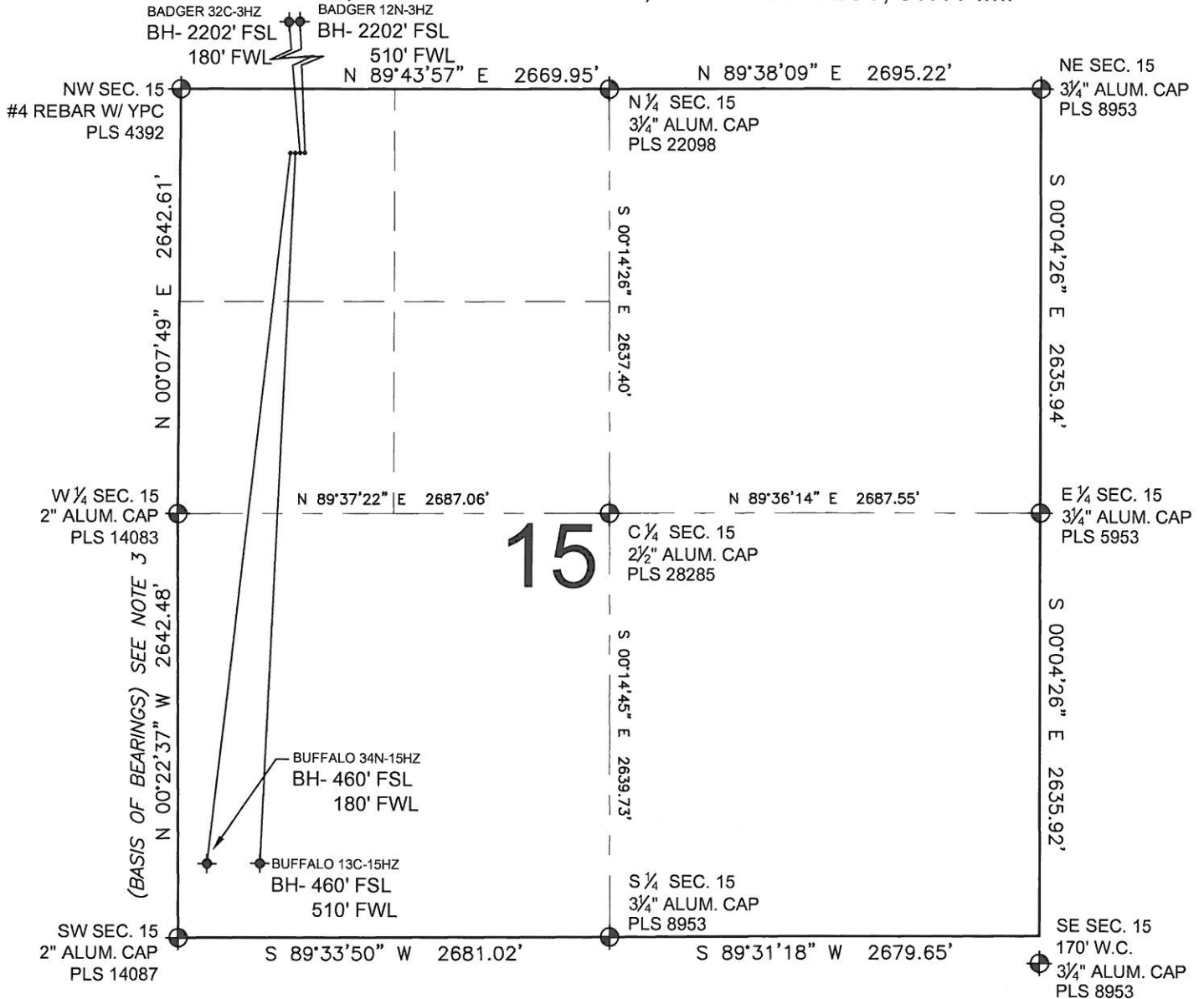
BY: SMF CHECK: KAG



MULTI-WELL PLAN

BUFFALO 35C-15HZ

SECTION 15, TOWNSHIP 1 NORTH, RANGE 68 WEST, 6TH P.M.



NOTES:

1. THIS FIELD SURVEY CONFORMS TO THE MINIMUM STANDARDS SET BY THE C.O.G.C.C., RULE NO. 215
2. HORIZONTAL POSITIONS AND ORTHOMETRIC ELEVATIONS SHOWN AT THE WELL HEAD, ARE BASED ON GPS-RTK POSITIONS DERIVED FROM MINIMUM 2-HOUR STATIC OBSERVATIONS CORRECTED BY THE NATIONAL GEODETIC SURVEY ONLINE POSITIONING USER SERVICE, O.P.U.S. DATUM: HORIZONTAL = NAD83/2007, VERTICAL = NAVD88
3. THE BASIS OF BEARINGS ARE STATE PLANE COORDINATE SYSTEM GRID BEARINGS SHOWN HEREON BETWEEN THE DESCRIBED MONUMENTS SHOWN HEREON.
4. GRID DISTANCES ARE SHOWN, AS MEASURED IN THE FIELD, WITH TIES TO WELLS MEASURED PERPENDICULAR TO SECTION LINES.

LEGEND

- = EXISTING MONUMENT
 = BOTTOM HOLE
 BH = BOTTOM HOLE
 = PROPOSED WELL
 = EXISTING WELL

NOTES:

BUFFALO 34N-15HZ TO BE AT 398' FNL, 689' FWL.
 BOTTOM HOLE AT 460' FSL & 180' FWL.
 BUFFALO 13C-15HZ TO BE AT 397' FNL, 720' FWL.
 BOTTOM HOLE AT 460' FSL & 510' FWL.
 BADGER 32C-3HZ TO BE AT 397' FNL, 749' FWL.
 BOTTOM HOLE AT 2202' FSL & 180' FWL.
 BADGER 12N-3HZ TO BE AT 396' FNL, 779' FWL.
 BOTTOM HOLE AT 2202' FSL & 510' FWL.

PREPARED BY:



KERR-MCGEE OIL & GAS ONSHORE LP

FIELD DATE:
04-20-12

PAD NAME:
BUFFALO & BADGER 1-4 PAD

DRAWING DATE:
05-14-12

WELD COUNTY, COLORADO
NW 1/4 NW 1/4, SEC.15, T1N, R68W, 6TH P.M.

BY: SMF CHECKED: KAG

