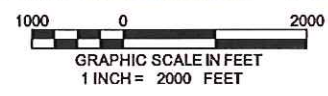
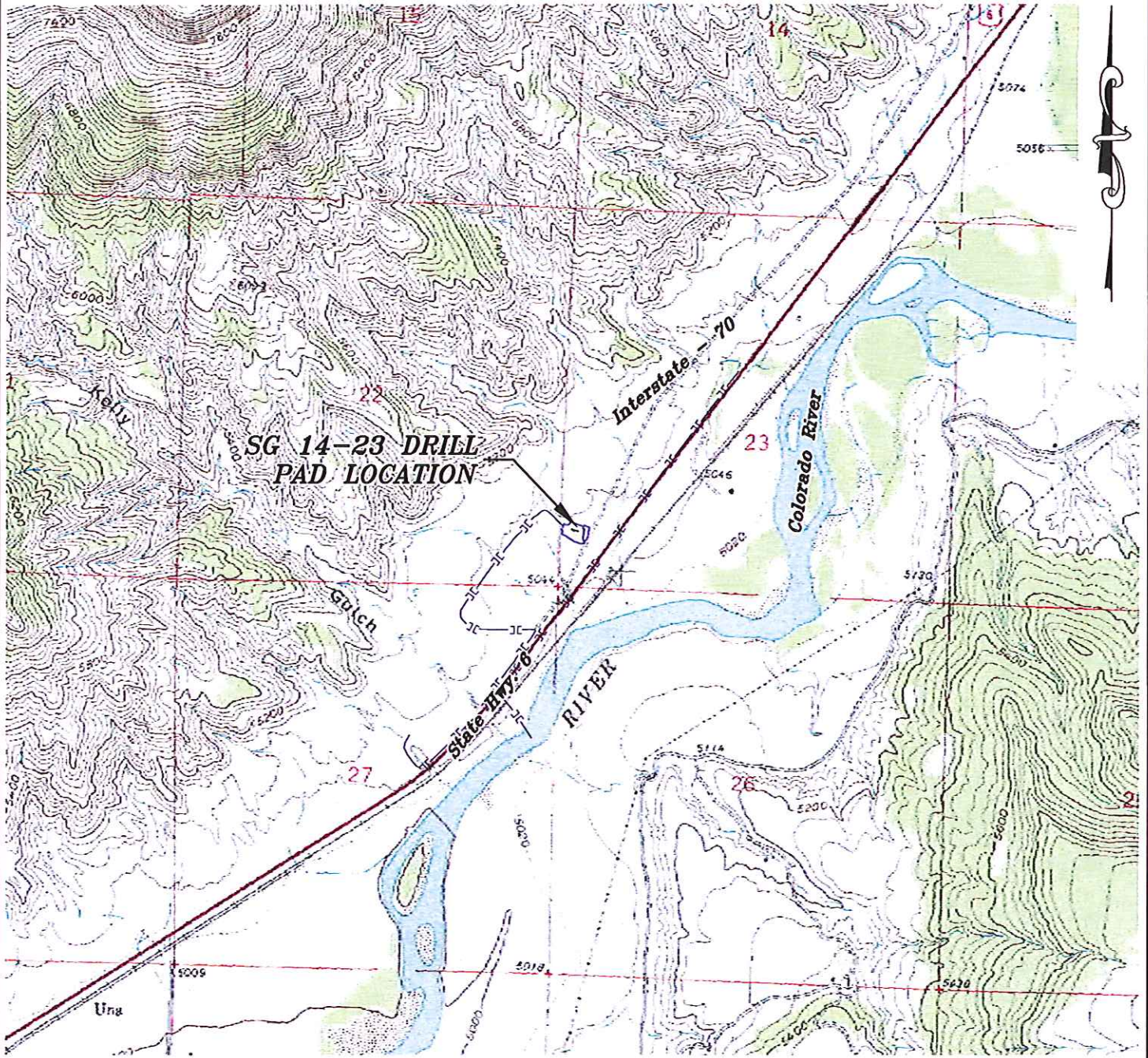
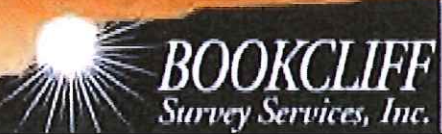


Section 23
T. 7 S., R 96 W



ACCESS DESCRIPTION:
FROM THE INTERSECTION OF 1ST STREET AND COUNTY ROAD 215 AT PARACHUTE, PROCEED IN A SOUTHWESTERLY DIRECTION THROUGH THE TOWN OF PARACHUTE ALONG 1ST STREET WHICH TRANSITIONS INTO STATE HIGHWAY 6 & 24, ±3.8 MILES TO AN INTERSECTION WITH A DIRT/GRAVEL ROAD, PROCEED RIGHT IN A NORTHERLY DIRECTION AROUND TO THE SG 14-23 DRILL PAD LOCATION, AS SHOWN HEREON.

136 East Third Street
Rifle, Colorado 81650
Ph. (970) 625-2720
Fax (970) 625-2773



SCALE: 1" = 2000'
DATE: 3/14/12
PLAT: 5 of 7
PROJECT: Valley
DFT: cws

Construction Plan Prepared for:
WPX ENERGY WPX Energy Rocky Mountain, LLC

SG 14-23 Drill Pad - Plat 5
ACCESS ROAD MAP