

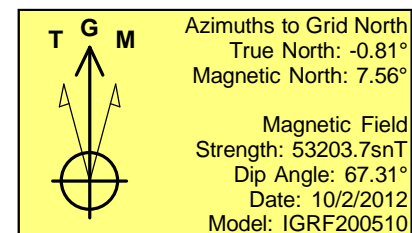
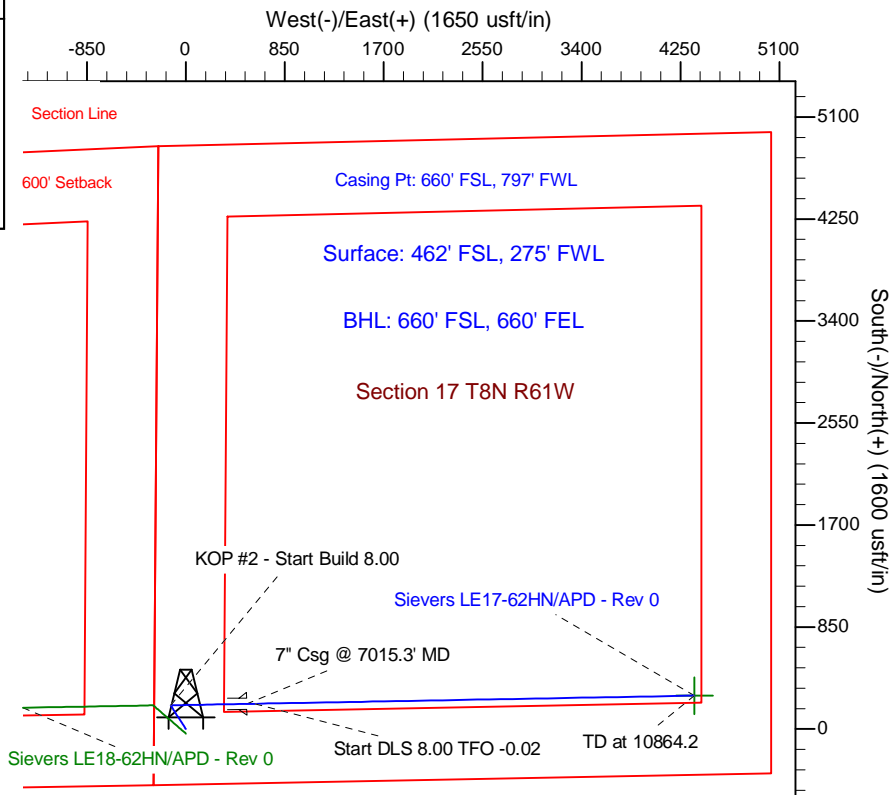
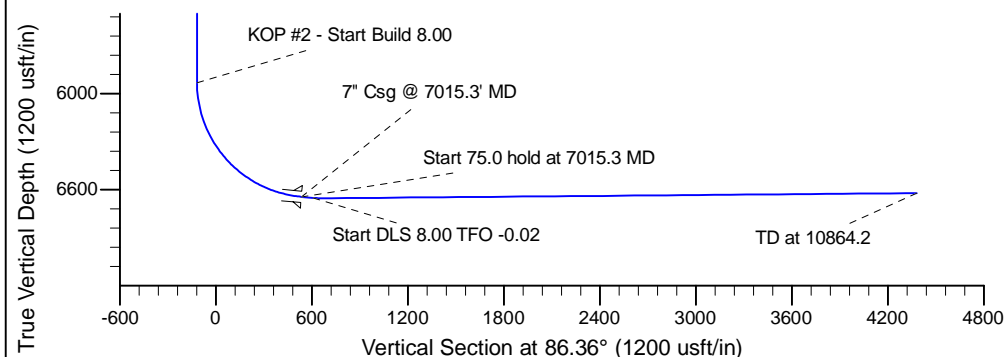
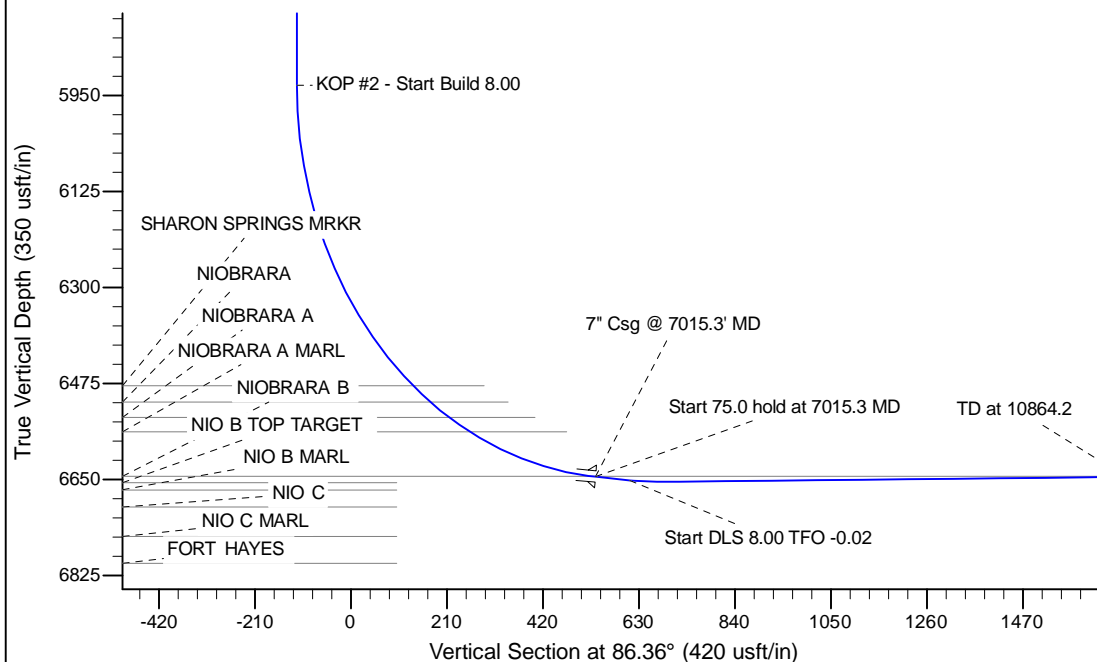
Project: Wattenberg Field
 Site: LE (Sec.17-T08N-R61W) Weld County, CO
 Well: Sievers LE17-62HN
 Wellbore: Original Drilling
 Design: APD - Rev 0

Northern Region Drilling

Geodetic System: US State Plane 1983
 Datum: North American Datum 1983
 Ellipsoid: GRS 1980
 Zone: Colorado Northern Zone
 System Datum: Mean Sea Level

SECTION DETAILS

Sec	MD	Inc	Azi	TVD	+N/-S	+E/-W	Dleg	TFace	VSec	Target
1	0.0	0.00	0.00	0.0	0.0	0.0	0.00	0.00	0.0	
2	1800.0	0.00	0.00	1800.0	0.0	0.0	0.00	0.00	0.0	
3	2280.5	12.01	326.51	2277.0	41.9	-27.7	2.50	326.51	-25.0	
4	2938.9	12.01	326.51	2921.0	156.1	-103.3	0.00	0.00	-93.2	
5	3419.4	0.00	0.00	3398.0	198.0	-131.0	2.50	180.00	-118.2	
6	5952.8	0.00	0.00	5931.4	198.0	-131.0	0.00	0.00	-118.2	
7	7015.3	85.00	88.98	6644.8	209.6	522.7	8.00	88.98	534.9	
8	7090.3	85.00	88.98	6651.4	211.0	597.4	0.00	0.00	609.6	
9	7159.0	90.50	88.98	6654.1	212.2	666.0	8.00	-0.02	678.2	
10	10864.2	90.50	88.98	6621.8	278.3	4370.4	0.00	0.00	4379.3	Sievers LE17-62HN BHL 660'FSL, 660'FEL



WELL DETAILS: Sievers LE17-62HN			
Ground Level:	5032.0	Latitude	40.655614
Northing	1484172.81	Easting	3350038.09
		Longitude	-104.238378
Plan: APD - Rev 0 (Sievers LE17-62HN/Original Drilling)			
Created By:	Carrie Willers	Date:	15:09, October 03 2012
Checked:		Date:	
Reviewed:		Date:	
Approved:		Date:	