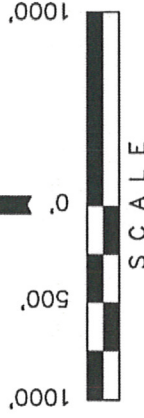


NOBLE ENERGY, INC.

BASIS OF ELEVATION

BASIS OF BEARINGS

BASIS OF BEARINGS IS A G.P.S. OBSERVATION.



CERTIFICATE

THIS IS TO CERTIFY THAT THE ABOVE PLAT WAS PREPARED FROM FIELD NOTES OF ACTUAL SURVEYS MADE BY ME OR UNDER MY SUPERVISION AND THAT THE SAME ARE TRUE AND CORRECT TO THE BEST OF MY KNOWLEDGE AND BELIEF.

REGISTERED LAND SURVEYOR
REGISTRATION NO. 17492
STATE OF COLORADO

UTAH ENGINEERING & LAND SURVEYING 85 SOUTH 200 EAST - VERNAL, UTAH 84078 (435) 789-1017			
SCALE	1" = 1000'	DATE SURVEYED:	DATE DRAWN:
PARTY	DARREN SHANKS K.H. J.M.H.	REFERENCES	G.L.O. PLAT
WEATHER	WARM	FILE	NOBLE ENERGY INC.

FEATURE TABLE		
EXISTING FEATURE	DIRECTION	LENGTH
PROPERTY LINE	WEST	275'

PDOP = 1.7

NAD 83 (TARGET BOTTOM HOLE)	NAD 83 (SURFACE LOCATION)
LATITUDE = 40°39'22.34" (40.656206)	LATITUDE = 40°39'20.21" (40.655614)
LONGITUDE = 104°3'21.41" (104.222614)	LONGITUDE = 104°4'18.16" (104.238378)

LEGEND:

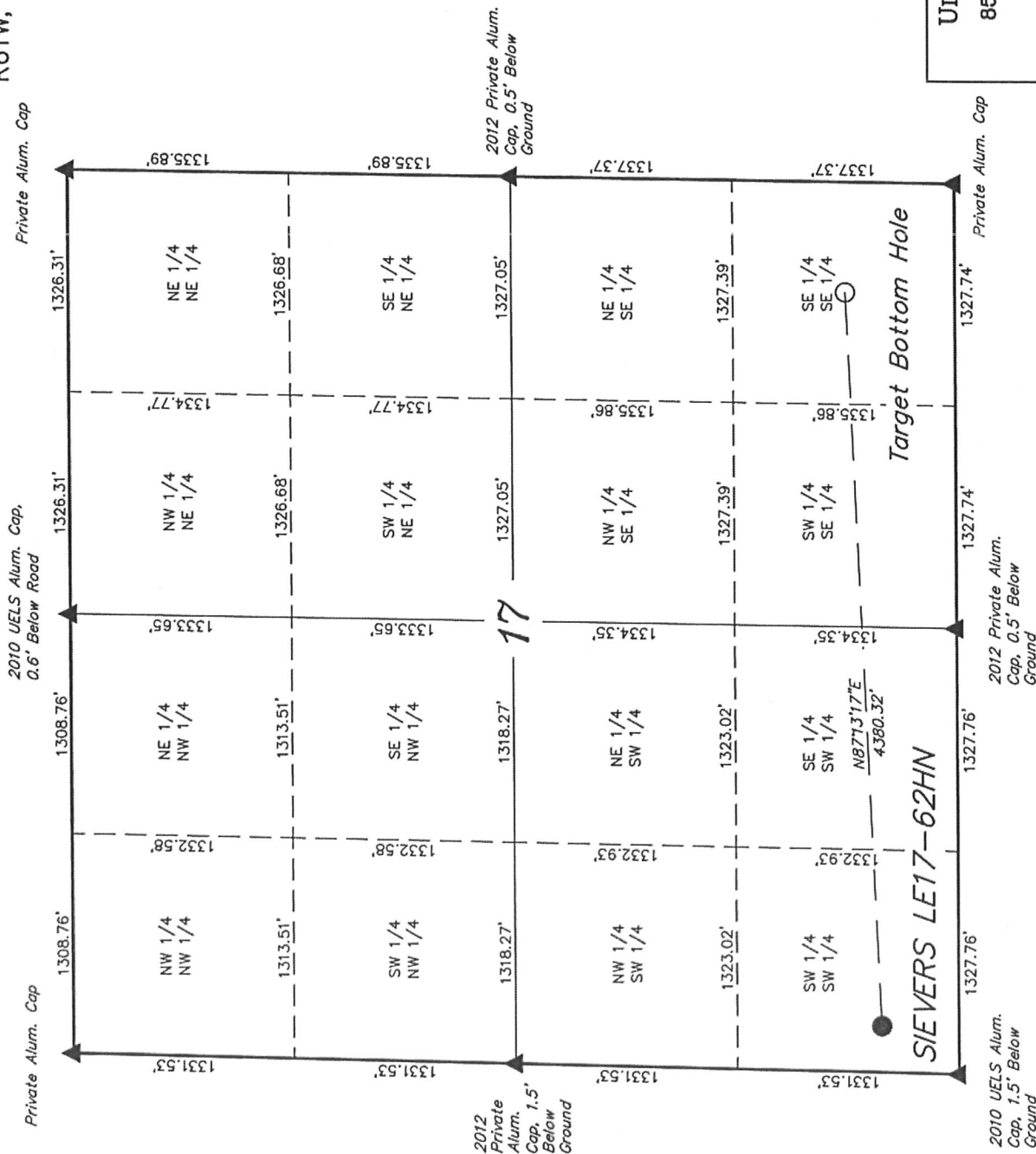
- $\mid = 90^\circ$ SYMBOL

- = PROPOSED WELL HEAD.

- ▲ = SECTION CORNERS LOCATED.

NOBLE ENERGY, INC.

Well location, SIEVERS LE17-62HN, located as shown in the SW 1/4 SW 1/4 of Section 17, T8N, R61W, 6th P.M., Weld County, Colorado.



LEGEND:

NO WELLS WITHIN SECTION

▲ = SECTION CORNERS LOCATED.

● = PROPOSED WELL HEAD.

○ = BOTTOM HOLE

UNTAH ENGINEERING & LAND SURVEYING

85 SOUTH 200 EAST - VERNAL, UTAH 84078

(435) 789-1017

SCALE 1" = 1000'

DATE SURVEYED:	DATE DRAWN:
----------------	-------------

DATE SURVEYED _____

DATE SURVEYED:

SCALE

SCALE

SCALE

SCALE