



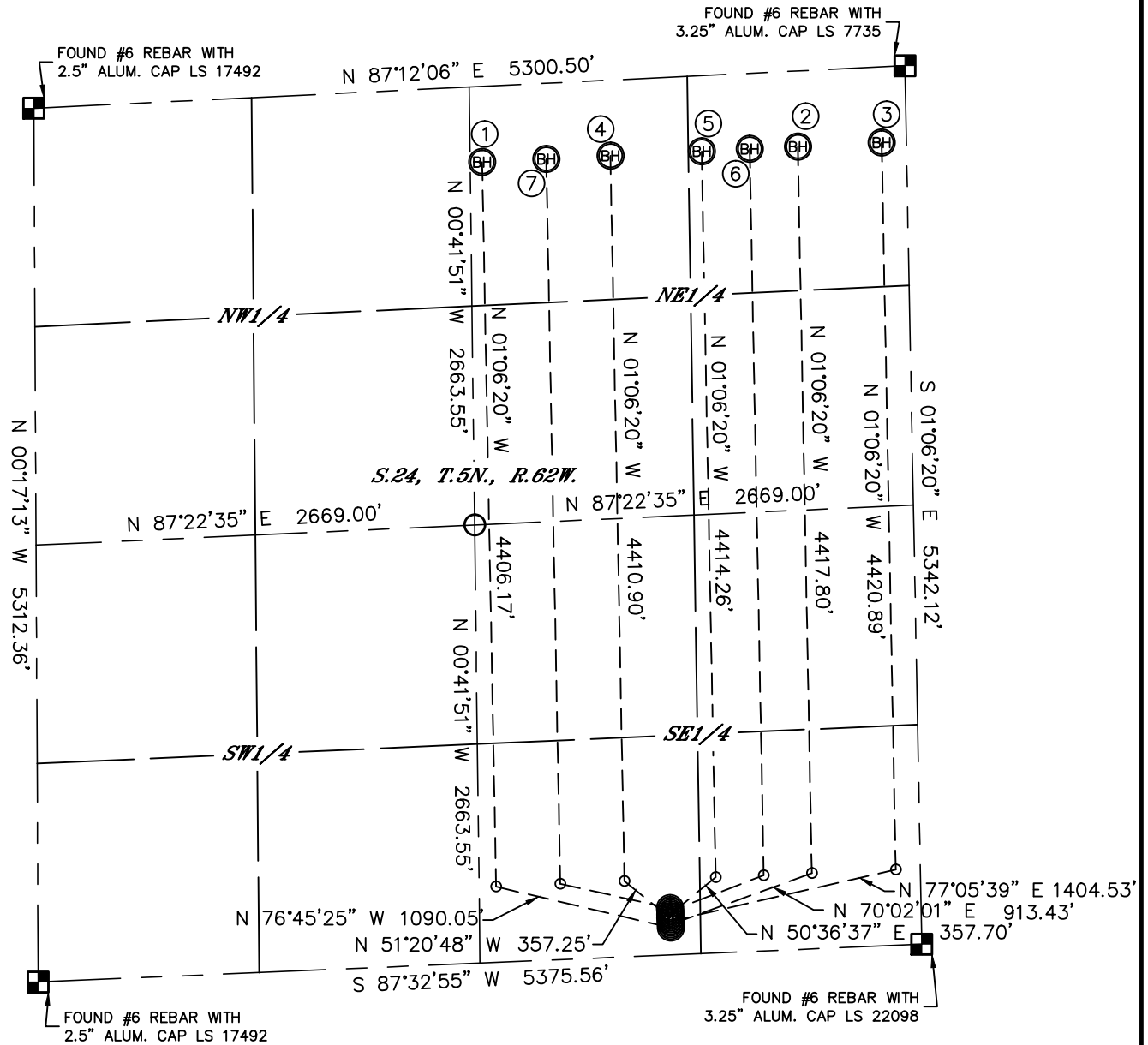
Lat40°, Inc. 1635 Foxtrail Drive, Suite 325 Loveland, CO 970-776-3321

MULTI-WELL PLAN

STATE ANTELOPE T-24 PAD

THIS MAP DOES NOT REPRESENT A BOUNDARY SURVEY

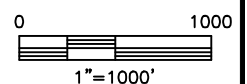
SECTION: 24
TOWNSHIP: 5N
RANGE: 62W



- | | | | | |
|--|---|--|---|---|
| ①
-BOTTOM HOLE-
STATE ANTELOPE
O-K-24HNB
460' FNL
2580' FEL
LAT: 40.39214°N
LONG: 104.27103°W | ②
-BOTTOM HOLE-
STATE ANTELOPE
44-41-24HNB
460' FNL
660' FEL
LAT: 40.39232°N
LONG: 104.26414°W | ③
-BOTTOM HOLE-
STATE ANTELOPE
Y-U-24HZ
460' FNL
150' FEL
LAT: 40.39237°N
LONG: 104.26231°W | ④
-BOTTOM HOLE-
STATE ANTELOPE
34-31-24HZ
460' FNL
1800' FEL
LAT: 40.39221°N
LONG: 104.26823°W | ⑤
-BOTTOM HOLE-
STATE ANTELOPE
T-P-24HZ
460' FNL
1245' FEL
LAT: 40.39226°N
LONG: 104.26624°W |
| ⑥
-BOTTOM HOLE-
STATE ANTELOPE
A6-24HZ | | ⑦
-BOTTOM HOLE-
STATE ANTELOPE
A7-24HZ | | |

LEGEND

- = ALIQUOT MONUMENT AS DESCRIBED
 = CALCULATED POSITION



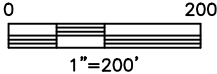
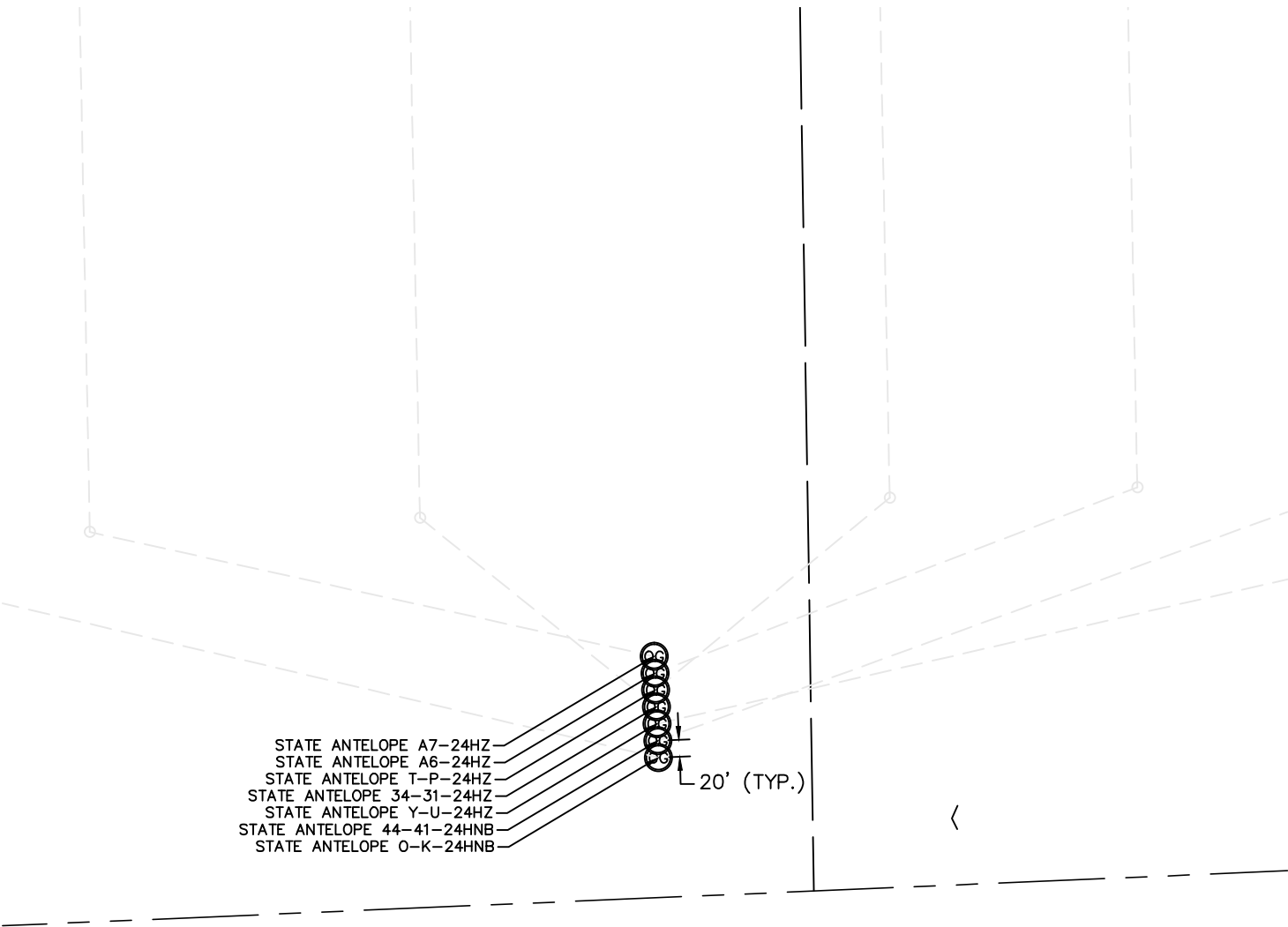
DATE: 10/17/2012
PROJECT#: 2012144



Lat40°, Inc. 1635 Foxtrail Drive, Suite 325 Loveland, CO 970-776-3321

MULTI-WELL PLAN
STATE ANTELOPE T-24 PAD

SECTION: 24
TOWNSHIP: 5N
RANGE: 62W



DATE: 10/17/2012
PROJECT#: 2012144