

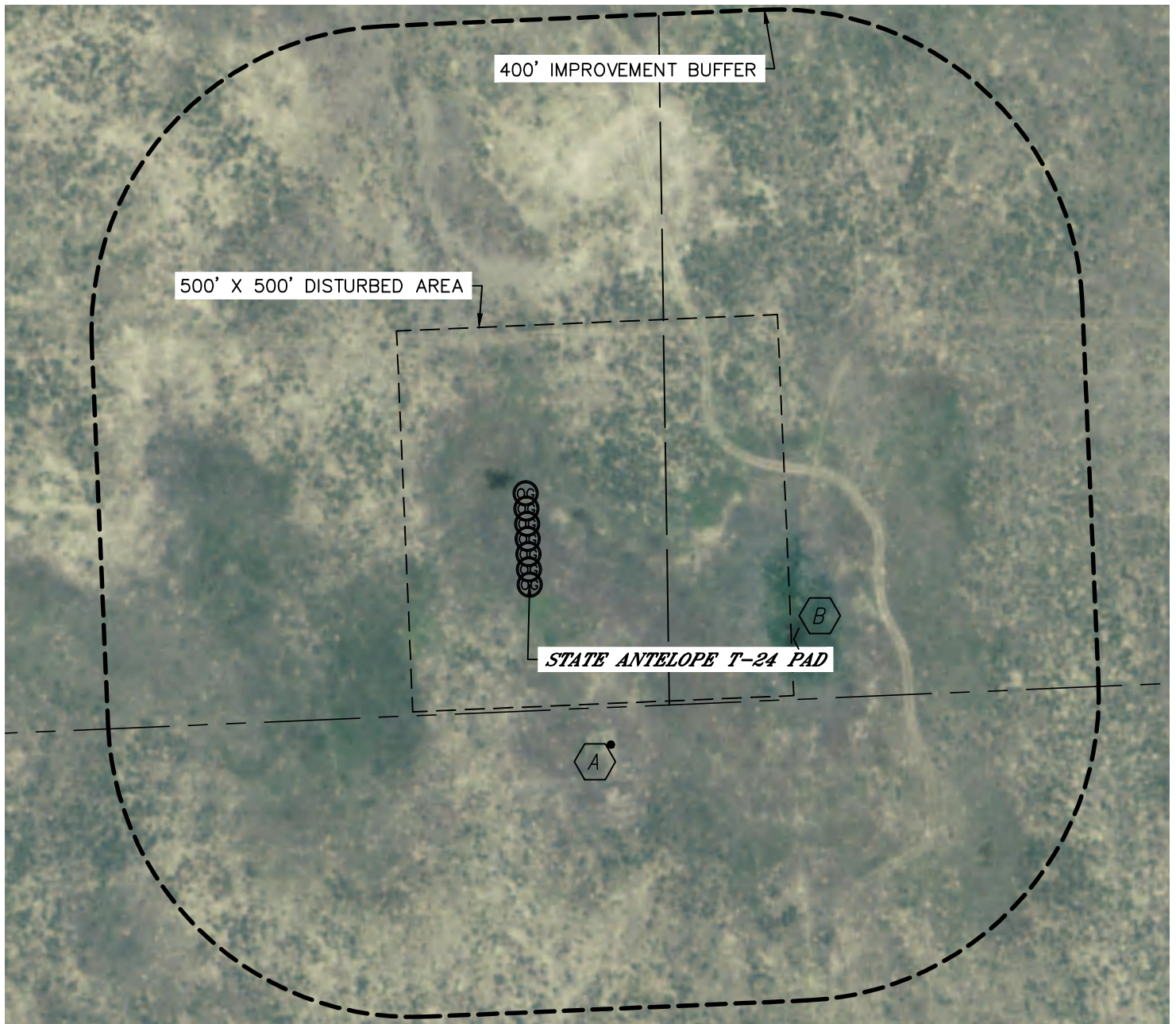


Lat40°, Inc. 1635 Foxtrail Drive, Suite 325 Loveland, CO 970-776-3321


## LOCATION DRAWING

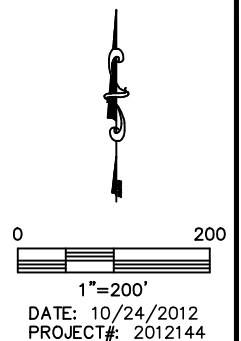
STATE ANTELOPE T-24 PAD

SECTION: 24  
TOWNSHIP: 5N  
RANGE: 62W



IMPROVEMENTS:  
(MEASURED FROM PROPOSED STATE ANTELOPE O-K-24HNB WELL)

-  WATER SPIGOT 235' SE
-  LOW AREA 354' SE



NEAREST: BUILDING 5280'+, PUBLIC ROAD 5280'+,  
ABOVE GROUND UTILITY 5280'+, RAILROAD 5280'+, PROPERTY LINE 165' S