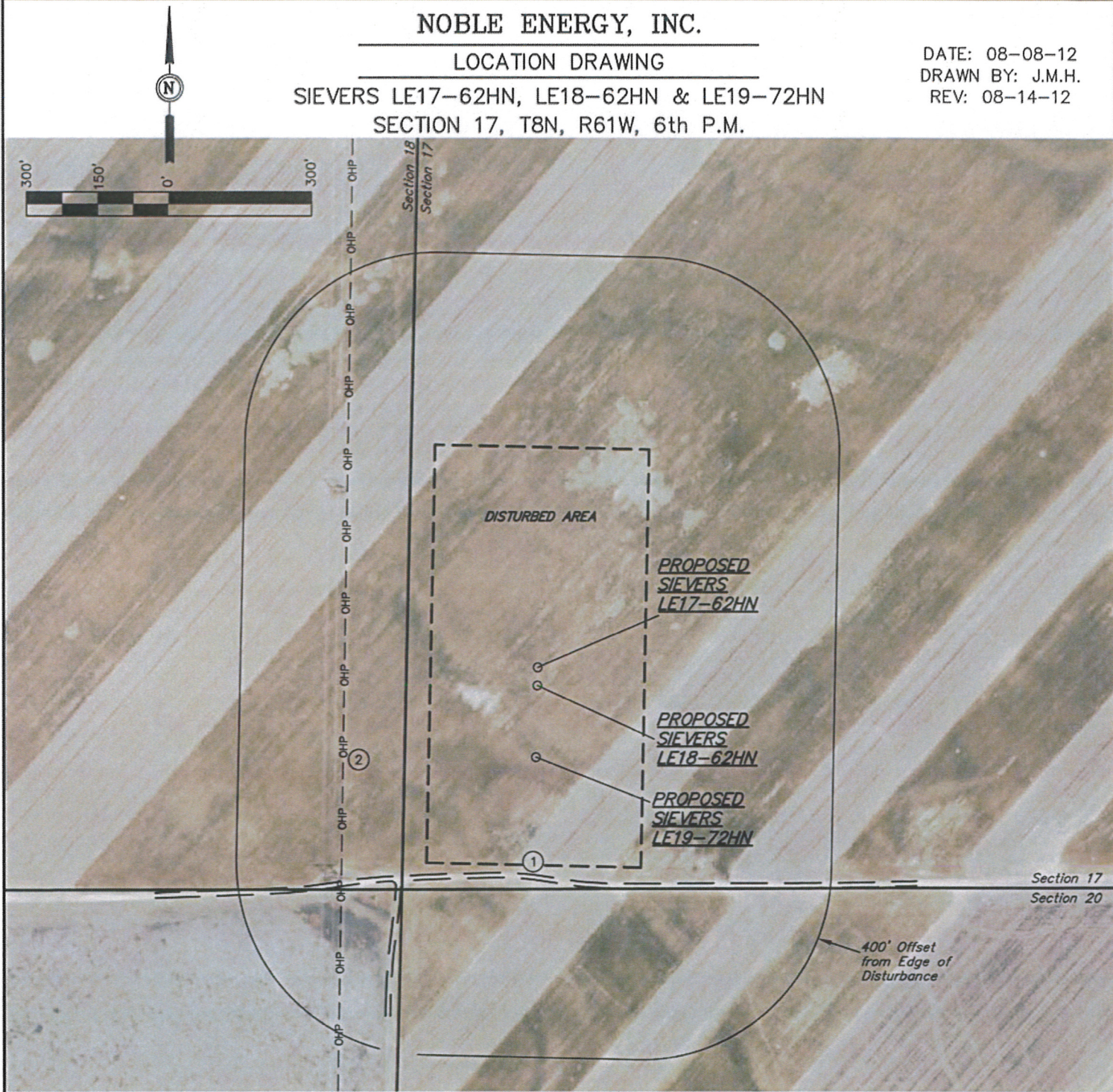


NOBLE ENERGY, INC.

LOCATION DRAWING

SIEVERS LE17-62HN, LE18-62HN & LE19-72HN  
SECTION 17, T8N, R61W, 6th P.M.

DATE: 08-08-12  
DRAWN BY: J.M.H.  
REV: 08-14-12



NOTE:  
DIRECTION AND DISTANCE TO IMPROVEMENTS AND NEAREST FEATURES ARE FROM PROPOSED SIEVERS LE19-72HN.

IMPROVEMENTS:

- ① 2-TRACK 254' S, 385' SW
- ② OVERHEAD POWER LINE 406' W

PAD DETAILS:

WELL HEAD SPACING = 37.5' & 150'

NEAREST FEATURE: BUILDING 2795' E, PUBLIC ROAD  
5038' E (CR 89), ABOVE GROUND UTILITY 406' W,  
RAILROAD 5280' +, PROPERTY LINE 275' W

UINTAH ENGINEERING & LAND SURVEYING  
85 So. 200 East \* Vernal, Utah 84078 \* (435) 789-1017