

The Road to Excellence Starts with Safety

Sold To #: 300721	Ship To #: 2939038	Quote #:	Sales Order #: 9664913
Customer: WPX ENERGY ROCKY MOUNTAIN LLC-EBUS	Customer Rep: Oaks, Rick		
Well Name: RWF	Well #: 23-35	API/UWI #: 05-045-20460	
Field: RULISON	City (SAP): RIFLE	County/Parish: Garfield	State: Colorado
Lat: N 39.483 deg. OR N 39 deg. 29 min. 0.161 secs.	Long: W 107.863 deg. OR W -108 deg. 8 min. 13.607 secs.		
Contractor: NABORS 576	Rig/Platform Name/Num: NABORS 576		
Job Purpose: Cement Surface Casing			
Well Type: Development Well	Job Type: Cement Surface Casing		
Sales Person: MAYO, MARK	Srv Supervisor: SMITH, DUSTIN	MBU ID Emp #: 418015	

Job Personnel

HES Emp Name	Exp Hrs	Emp #	HES Emp Name	Exp Hrs	Emp #	HES Emp Name	Exp Hrs	Emp #
HYDE, DUSTIN C	6	453940	MILLER II, MATTHEW Reginald	6	425164	SMITH, DUSTIN Michael	6	418015
WYCKOFF, RYAN Scott	6	476117						

Equipment

HES Unit #	Distance-1 way	HES Unit #	Distance-1 way	HES Unit #	Distance-1 way	HES Unit #	Distance-1 way
10867531	60 mile	10871245	60 mile	10989685	60 mile	11259883	60 mile
11808831	60 mile						

Job Hours

Date	On Location Hours	Operating Hours	Date	On Location Hours	Operating Hours	Date	On Location Hours	Operating Hours
07/27/12	6	3						

TOTAL Total is the sum of each column separately

Job

Formation Name	Top	Bottom	Form Type	Job depth MD	Job Depth TVD	Water Depth	Perforation Depth (MD)	From	To
			BHST	1131.5 ft	1131.5 ft				

Job Times

Date	Time	Time Zone
27 - Jul - 2012	09:00	MST
27 - Jul - 2012	13:00	MST
27 - Jul - 2012	16:35	MST
27 - Jul - 2012	17:30	MST
27 - Jul - 2012	19:00	MST

Well Data

Description	New / Used	Max pressure psig	Size in	ID in	Weight lbm/ft	Thread	Grade	Top MD ft	Bottom MD ft	Top TVD ft	Bottom TVD ft
OPEN HOLE				13.5				.	1175.		
SURFACE CASING	New		9.625	9.001	32.3			.	1131.5		

Sales/Rental/3rd Party (HES)

Description	Qty	Qty uom	Depth	Supplier
PLUG,CMTG,TOP,9 5/8,HWE,8.16 MIN/9.06 MA	1	EA		
R/A DENSOMETER W/CHART RECORDER,/JOB,ZI	1	JOB		
PORT. DATA ACQUIS. W/OPTICEM RT W/HES	1	EA		
ADC (AUTO DENSITY CTRL) SYS, /JOB,ZI	1	JOB		

Tools and Accessories

Type	Size	Qty	Make	Depth	Type	Size	Qty	Make	Depth	Type	Size	Qty	Make
Guide Shoe					Packer					Top Plug	9 5/8	1	HES
Float Shoe					Bridge Plug					Bottom Plug			
Float Collar					Retainer					SSR plug set			
Insert Float										Plug Container	9 5/8	1	HES
Stage Tool										Centralizers			

Miscellaneous Materials

Gelling Agt	Conc	Surfactant	Conc	Acid Type	Qty	Conc	%
Treatment Fld	Conc	Inhibitor	Conc	Sand Type	Size		Qty

Fluid Data									
Stage/Plug #: 1									
Fluid #	Stage Type	Fluid Name	Qty	Qty uom	Mixing Density lbm/gal	Yield ft ³ /sk	Mix Fluid Gal/sk	Rate bbl/min	Total Mix Fluid Gal/sk
1	Fresh Water		20.00	bbl	8.33	.0	.0	4.0	
2	Lead Cement	VERSACEM (TM) SYSTEM (452010)	160.0	sacks	12.3	2.38	13.75	7.0	13.75
3	Tail Cement	VERSACEM (TM) SYSTEM (452010)	160.0	sacks	12.8	2.11	11.75	7.0	11.75
4	Displacement Fluid		85.6	bbl	8.34	.0	.0	10.0	
Calculated Values		Pressures		Volumes					
Displacement	85.6	Shut In: Instant		Lost Returns	0	Cement Slurry	127.9	Pad	
Top Of Cement	SURFACE	5 Min		Cement Returns	15	Actual Displacement	85.6	Treatment	
Frac Gradient		15 Min		Spacers	20	Load and Breakdown		Total Job	233.5
Rates									
Circulating		Mixing	7	Displacement	10	Avg. Job			8
Cement Left In Pipe	Amount	44.04 ft	Reason	Shoe Joint					
Frac Ring # 1 @	ID	Frac ring # 2 @	ID	Frac Ring # 3 @	ID	Frac Ring # 4 @	ID		
The Information Stated Herein Is Correct				Customer Representative Signature					

The Road to Excellence Starts with Safety

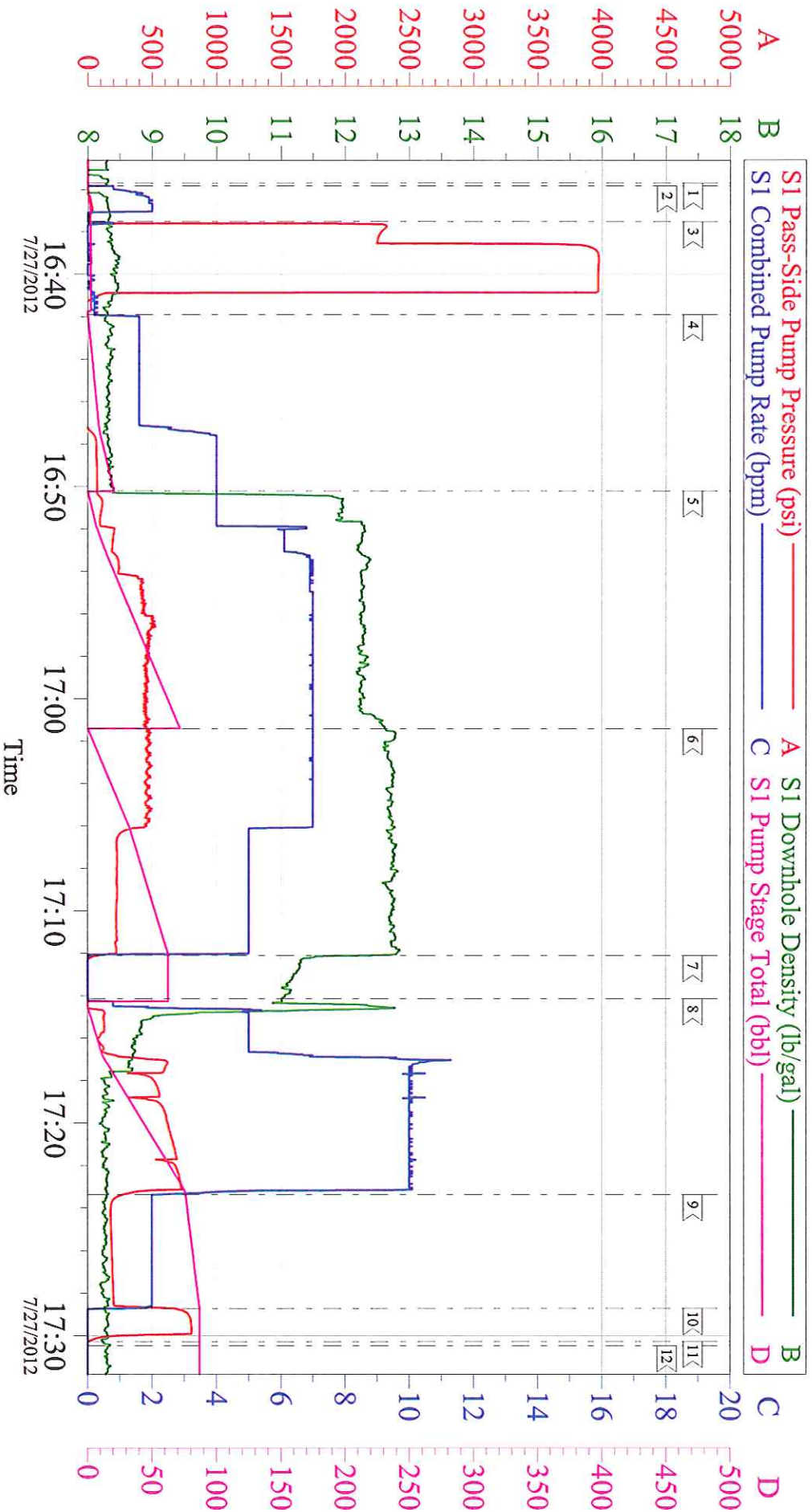
Sold To #: 300721	Ship To #: 2939038	Quote #:	Sales Order #: 9664913
Customer: WPX ENERGY ROCKY MOUNTAIN LLC-EBUS	Customer Rep: Oaks, Rick		
Well Name: RWF	Well #: 23-35	API/UWI #: 05-045-20460	
Field: RULISON	City (SAP): RIFLE	County/Parish: Garfield	State: Colorado
Legal Description:			
Lat: N 39.483 deg. OR N 39 deg. 29 min. 0.161 secs.		Long: W 107.863 deg. OR W -108 deg. 8 min. 13.607 secs.	
Contractor: NABORS 576	Rig/Platform Name/Num: NABORS 576		
Job Purpose: Cement Surface Casing		Ticket Amount:	
Well Type: Development Well	Job Type: Cement Surface Casing		
Sales Person: MAYO, MARK	Srv Supervisor: SMITH, DUSTIN	MBU ID Emp #: 418015	

Activity Description	Date/Time	Cht #	Rate bbl/ min	Volume bbl		Pressure psig		Comments
				Stage	Total	Tubing	Casing	
Call Out	07/27/2012 09:00							ELITE # 8
Depart Yard Safety Meeting	07/27/2012 11:30							ALL HES EMPLOYEES
Arrive At Loc	07/27/2012 13:00							ARRIVED ON LOCATION 1 HOUR EARLY DIDNT START CHARGING TIME UNTIL REQUESTED ON LOCATION TIME
Assessment Of Location Safety Meeting	07/27/2012 13:30							ALL HES EMPLOYEES
Pre-Rig Up Safety Meeting	07/27/2012 15:20							ALL HES EMPLOYEES
Rig-Up Equipment	07/27/2012 15:30							1 F-550 PICKUP 1 HT- 400 PUMP TRUCK 1 660 BULK TRUCK
Pre-Job Safety Meeting	07/27/2012 16:10							ALL HES EMPLOYEES AND RIG CREW
Rig-Up Completed	07/27/2012 16:35							RIG CIRCULATED FOR 1 HOUR PRIOR TO JOB PIPE STATIC DURING CIRCULATION
Start Job	07/27/2012 16:35							TD: 1175 TP: 1131.46 SJ: 44.04 9 5/8 32.3# CSG 13 1/2 OH MUD WT: 8.9 PPG VISC: 70
Test Lines	07/27/2012 16:37					3988. 0		PRESSURE TEST OK
Pump Spacer	07/27/2012 16:41		4	20	20		59.0	FRESH WATER
Activity Description	Date/Time	Cht #	Rate bbl/ min	Volume bbl		Pressure psig		Comments
				Stage	Total	Tubing	Casing	

Cementing Job Log

Pump Lead Cement	07/27/2012 16:50		8	67.8	67.8		507.0	160 SKS 12.3 PPG 2.38 YIELD 13.75 GAL/SK LEAD CEMENT WEIGHT VERIFIED VIA MUD SCALES THROUGHOUT LEAD CEMENT
Pump Tail Cement	07/27/2012 17:01		8	60.1	60.1		478.0	160 SKS 12.8 PPG 2.11 YIELD 11.75 GAL/SK TAIL CEMENT WEIGHT VERIFIED VIA MUD SCALES THROUGHOUT TAIL CEMENT
Shutdown	07/27/2012 17:12							
Drop Plug	07/27/2012 17:12							PLUG AWAY NO PROBLEMS WASHED UP ON TOP OF PLUG AS PER COMPANY REP
Pump Displacement	07/27/2012 17:14		10	85.6	85.6		877.0	FRESH WATER
Slow Rate	07/27/2012 17:23		2	75	75		211.0	SLOW RATE TO BUMP PLUG
Bump Plug	07/27/2012 17:28		2	85.6	85.6		820.0	PSI BEFORE BUMPING PLUG @ 211 BUMPED UP TO 820 PSI
Check Floats	07/27/2012 17:30							FLOATS HELD 3/4 BBL BACK TO DISPLACEMENT TANK
End Job	07/27/2012 17:30							GOOD CIRCULATION THROUGHOUT JOB NO PIPE MOVEMENT DURING JOB 15 BBLS CEMENT TO SURFACE RIG USED 40 #'S OF SUGAR
Pre-Rig Down Safety Meeting	07/27/2012 17:35							ALL HES EMPLOYEES
Rig-Down Equipment	07/27/2012 17:50							
Pre-Convoy Safety Meeting	07/27/2012 18:50							ALL HES EMPLOYEES
Crew Leave Location	07/27/2012 19:00							THANK YOU FOR USING HALLIBURTON CEMENT DUSTIN SMITH AND CREW

WPX RWF 23-35 9 5/8 SURFACE



Local Event Log

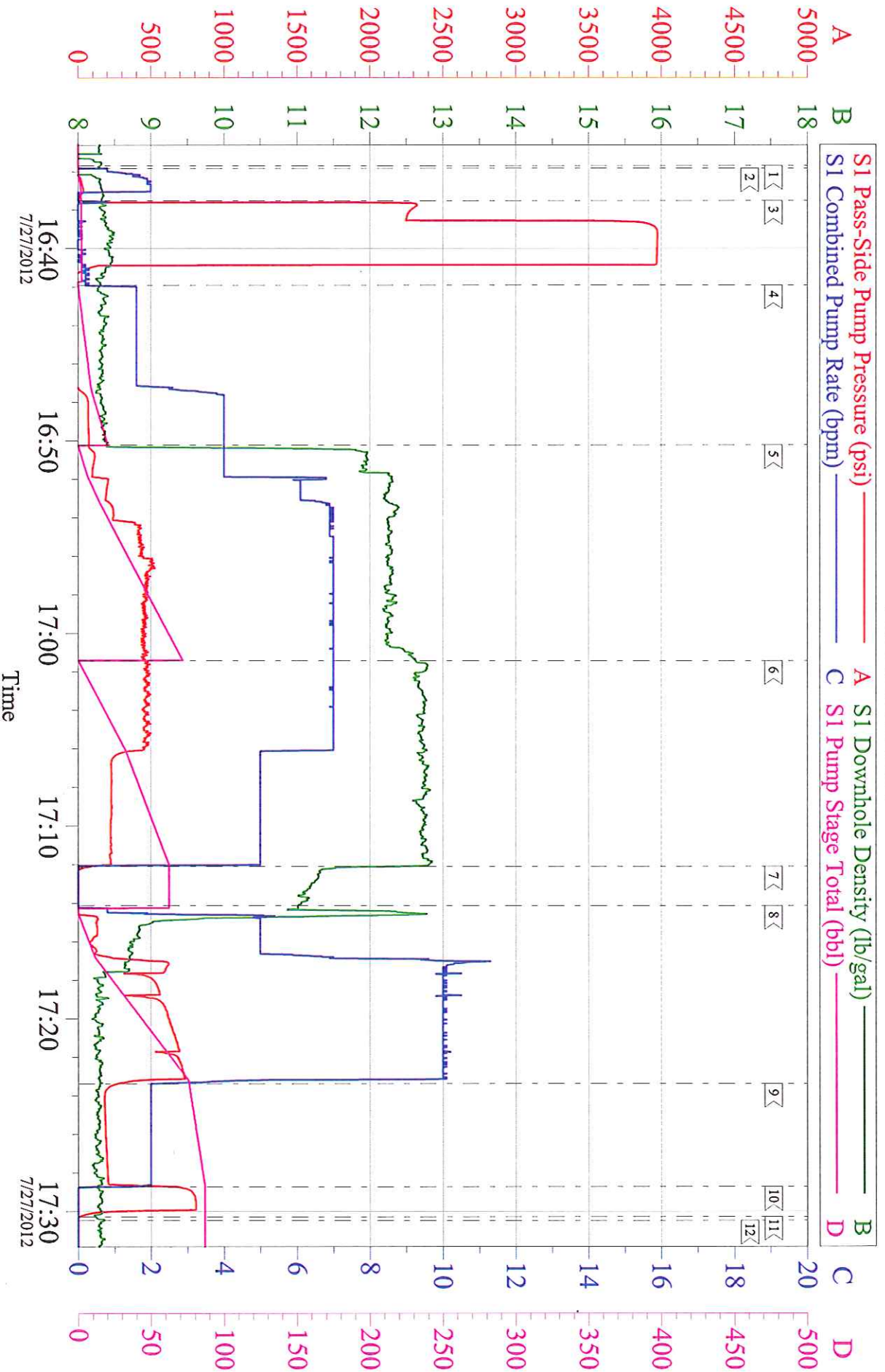
1 < START JOB	16:35:42	2 < FILL LINES	16:35:50	3 < TEST LINES	16:37:31
4 < PUMP H2O SPACER	16:41:54	5 < PUMP LEAD CEMENT	16:50:13	6 < PUMP TAIL CEMENT	17:01:25
7 < SHUTDOWN/ DROP PLUG	17:12:06	8 < PUMP DISPLACEMENT	17:14:08	9 < SLOW RATE	17:23:23
10 < BUMP PLUG	17:28:44	11 < CHECK FLOATS	17:30:17	12 < END JOB	17:30:29

Customer: WPX
Well Description: RWF 23-35
Company Rep: RICK OAKS

Job Date: 27-Jul-2012
Job Type: 9 5/8 SURFACE
Cement Supervisor: DUSTIN SMITH

Sales Order #: 9664913
ADC Used: YES
Elite #: 8 DUSTIN HYDE

WPX RWF 23-35 9 5/8 SURFACE



Customer: WPX
Well Description: RWF 23-35
Company Rep: RICK OAKS

Job Date: 27-Jul-2012
Job Type: 9 5/8 SURFACE
Cement Supervisor: DUSTIN SMITH

Sales Order #: 9664913
ADC Used: YES
Elite #: 8 DUSTIN HYDE

OptiCem v6.4.10
27-Jul-12 17:40