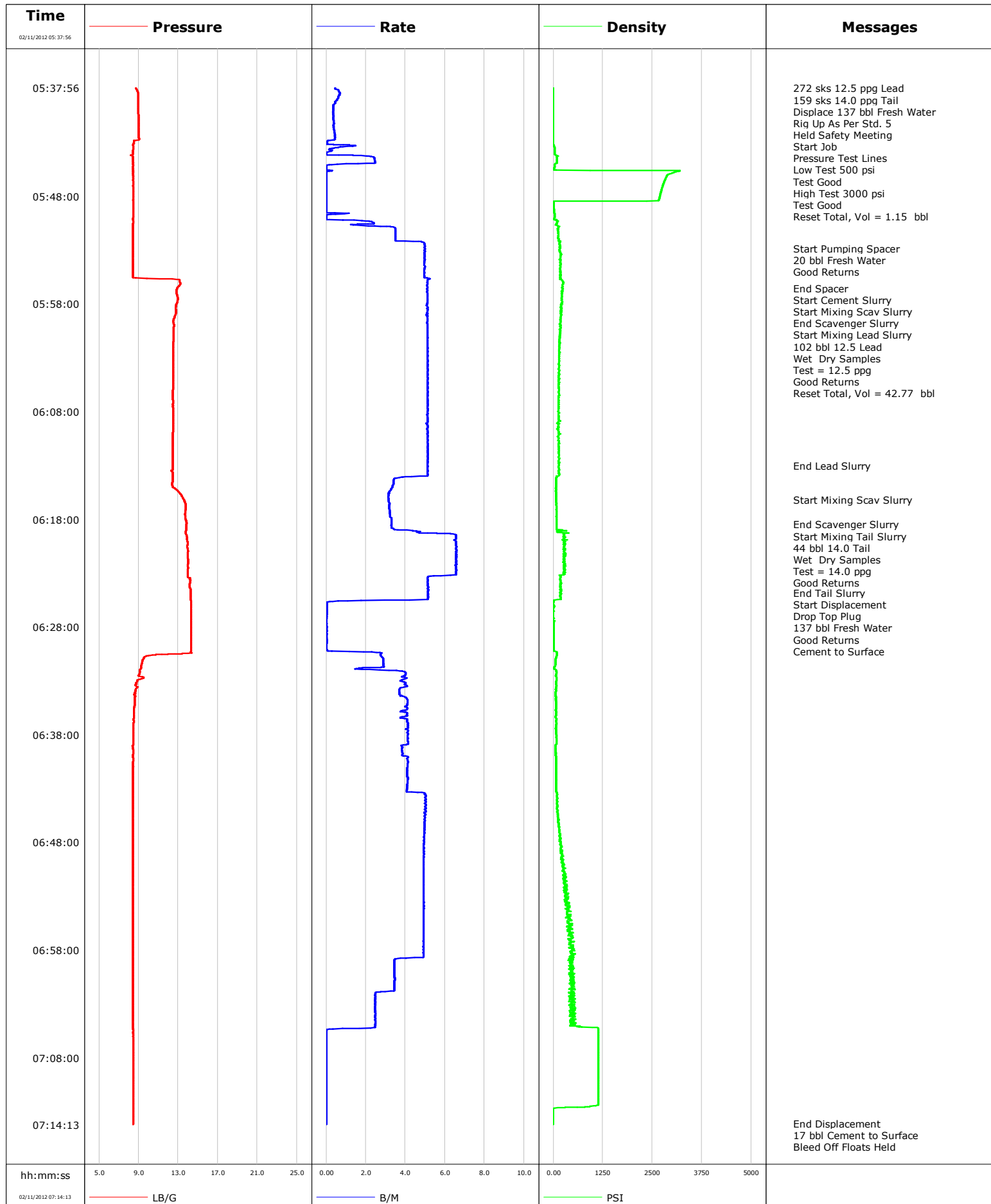
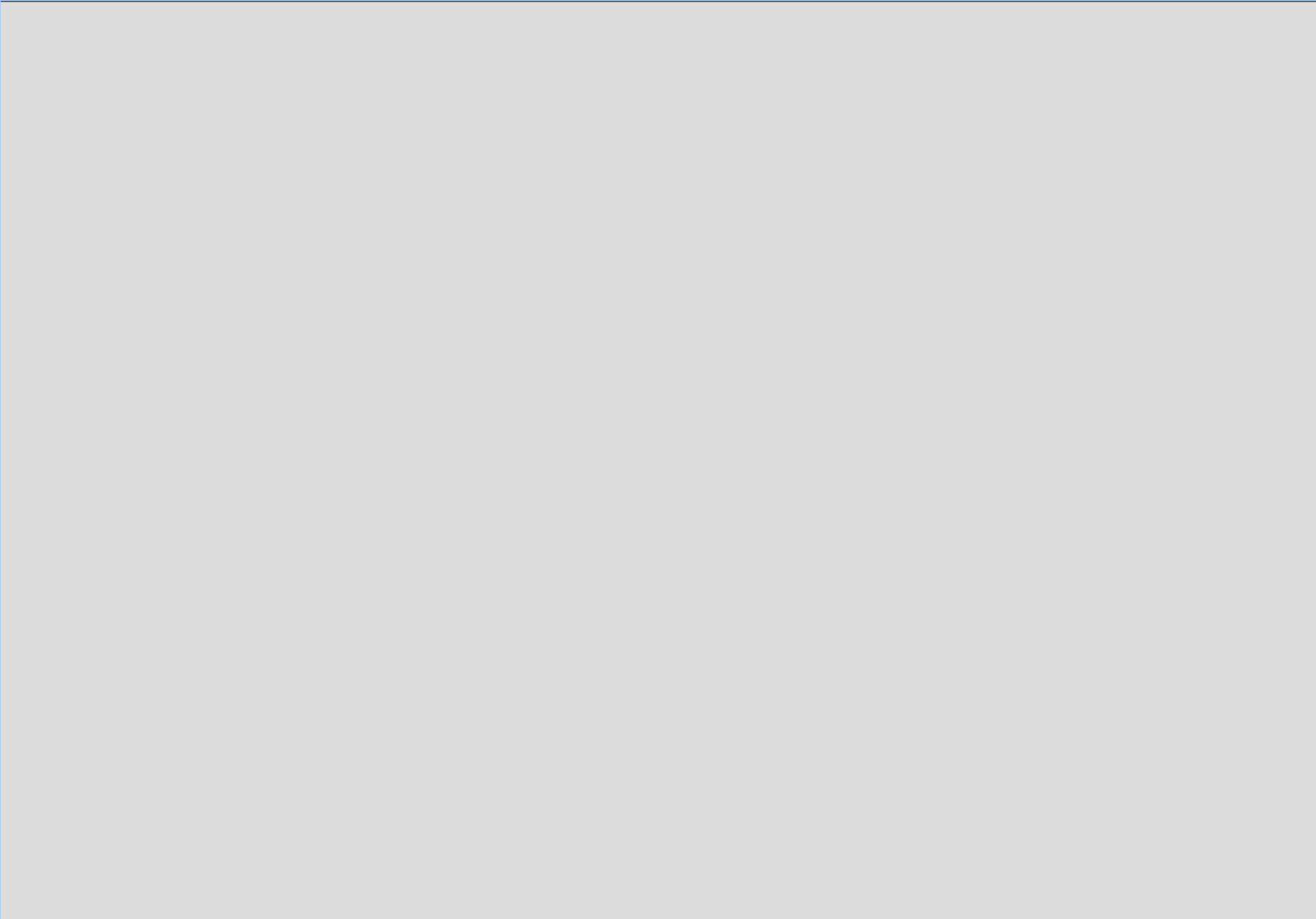


Well	EF14E-27 P	Client	Encana
Field	N. Parachute	SIR No.	EF14E-27 P
Engineer	Jordan Moreland	Job Type	9 5/8 Surface
Country	United States	Job Date	02-11-2012



Cementing

PRD Post Job Plot



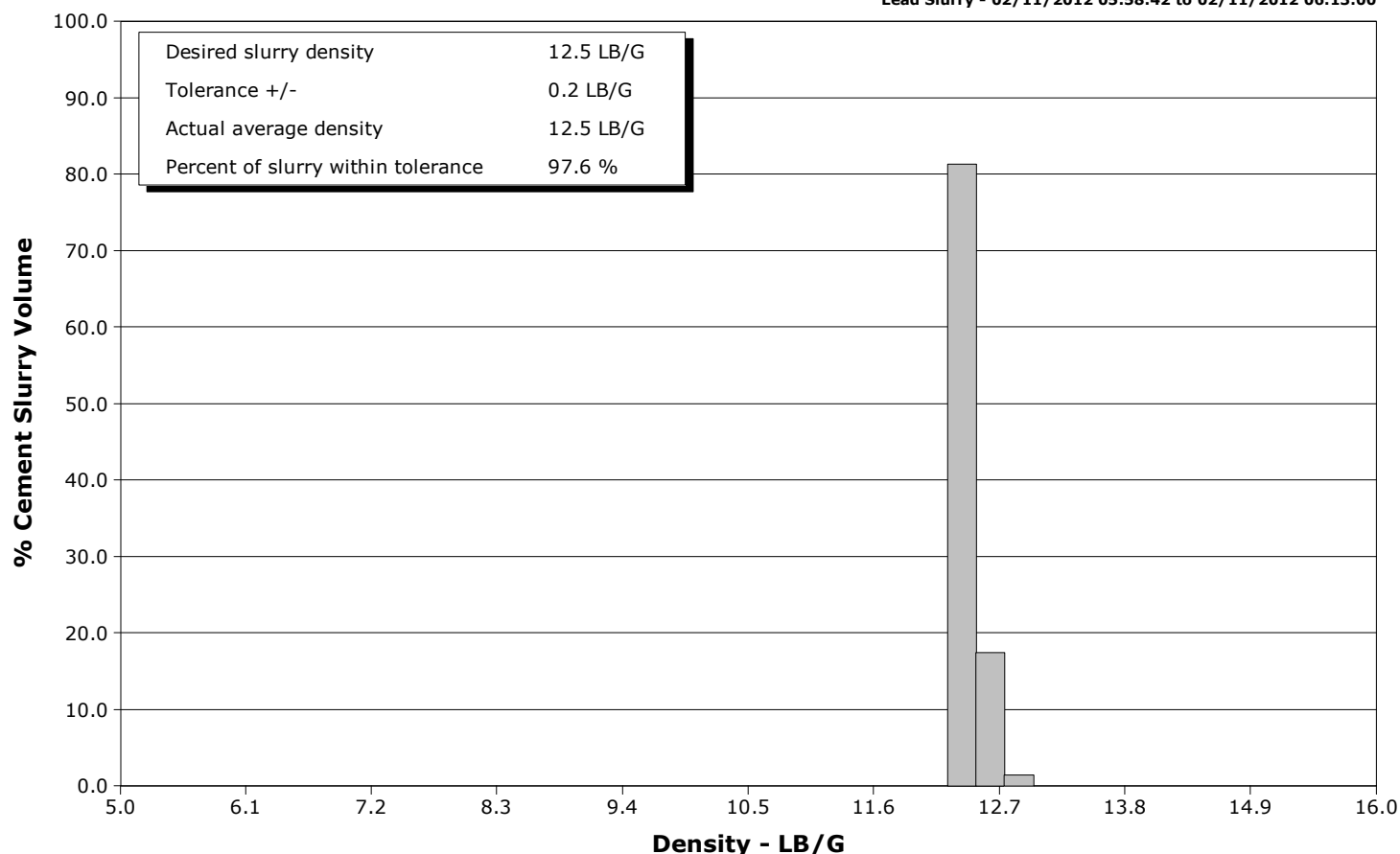
05:37:56 05:48:00 05:58:00 06:08:00 06:18:00 06:28:00 06:38:00 06:48:00 06:58:00 07:08:00 07:14:13



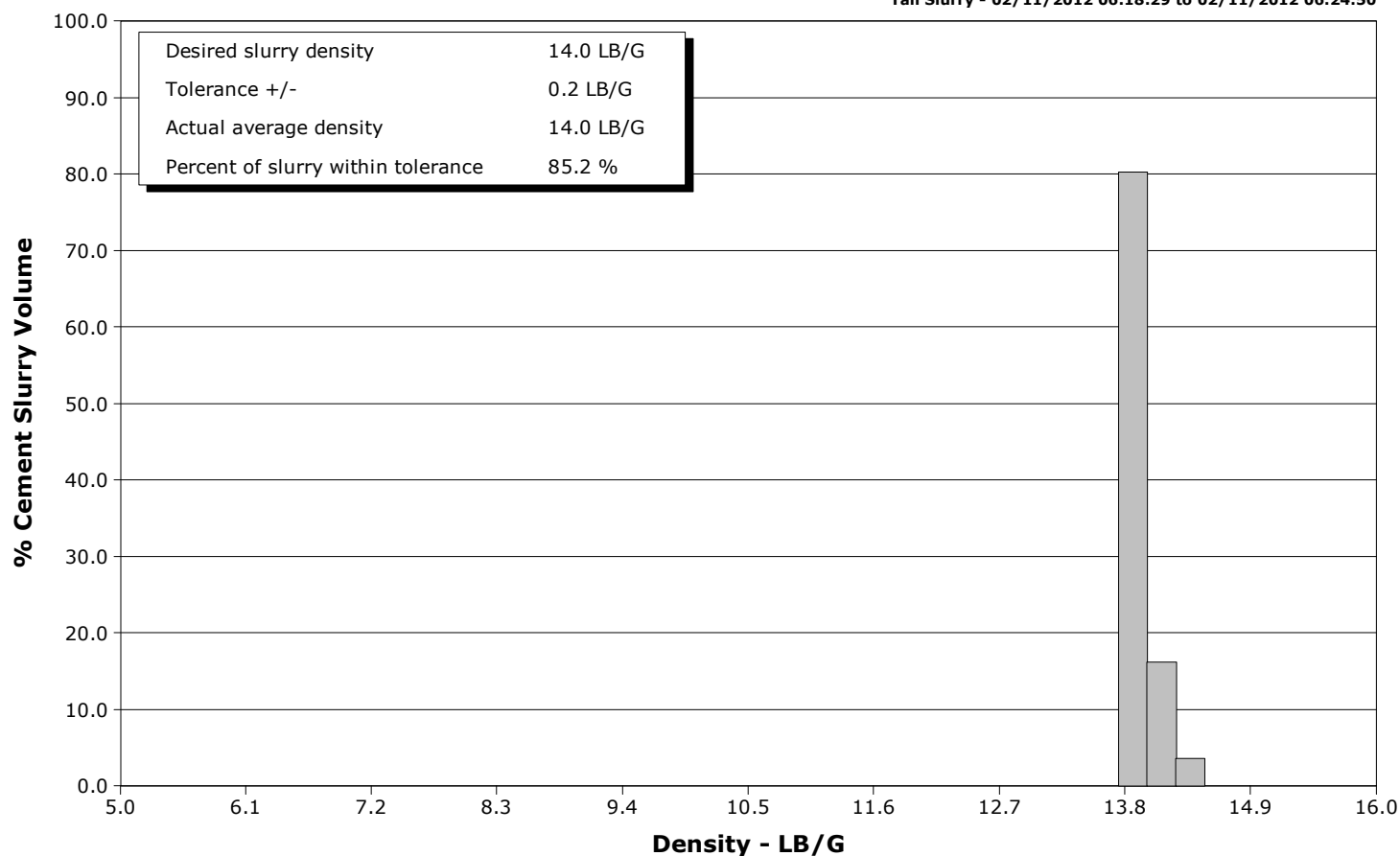
Well EF14E-27 P
Field N. Parachute
Engineer Jordan Moreland
Country United States

Client Encana
SIR No. EF14E-27 P
Job Type 9 5/8 Surface
Job Date 02-11-2012

Lead Slurry - 02/11/2012 05:58:42 to 02/11/2012 06:13:00



Tail Slurry - 02/11/2012 06:18:29 to 02/11/2012 06:24:50



				Customer Encana				Job Number EF14E-27 P										
Well EF14E-27 P				Location (legal)				Schlumberger Location GCO				Job Start Feb/11/2012						
Field N. Parachute			Formation Name/Type Shale			Deviation deg		Bit Size in		Well MD ft		Well TVD ft						
County Garfield			State/Province Colorado			BHP psi		BHST 100 degF		BHCT 87 degF		Pore Press. Gradient lb/gal						
Well Master 0631244219			API/UWI															
Rig Name Patterson 303		Drilled For Gas		Service Via Land		Casing/Liner												
						Depth, ft		Size, in		Weight, lb/ft		Grade		Thread				
Offshore Zone		Well Class New		Well Type Development		1818.0		9.6		36.0		J55		8RD				
						0.0		0.0		0.0								
Drilling Fluid Type Bentonite			Max. Density lb/gal		Plastic Viscosity cP		Tubing/Drill Pipe											
							T/D		Depth, ft		Size, in		Weight, lb/ft		Grade		Thread	
Service Line Cementing		Job Type 9 5/8 Surface																
Max. Allowed Tub. Press psi		Max. Allowed Ann. Press psi			WH Connection Single Cement head			Perforations/Open Hole										
								Top, ft		Bottom, ft		shot/ft		No. of Shots		Total Interval ft		
Service Instructions 272 sks 12.5 ppg G Lead 159 sks 14.0 ppg G Tail								ft		ft						Diameter in		
								ft		ft								
								ft		ft								
								Treat Down Casing		Displacement 137.0 bbl		Packer Type		Packer Depth ft				
								Tubing Vol. bbl		Casing Vol. 139.0 bbl		Annular Vol. 111.0 bbl		Openhole Vol. 261.0 bbl				
Casing/Tubing Secured <input checked="" type="checkbox"/>		1 Hole Vol. Circulated prior to Cement <input checked="" type="checkbox"/>		Casing Tools				Squeeze Job										
Lift Pressure psi				Shoe Type Guide				Squeeze Type										
Pipe Rotated <input type="checkbox"/>		Pipe Reciprocated <input type="checkbox"/>		Shoe Depth 1818.0 ft				Tool Type										
No. Centralizers		Top Plugs 1		Bottom Plugs		Stage Tool Type				Tool Depth ft								
Cement Head Type Single				Stage Tool Depth ft				Tail Pipe Size in										
Job Scheduled For Feb/11/2012		Arrived on Location Feb/11/2012		Leave Location Feb/11/2012		Collar Type Float				Tail Pipe Depth ft								
						Collar Depth 1773.0 ft				Sqz. Total Vol. bbl								
Date	Time 24-hr clock	Treating Pressure PSI	Flow Rate B/M	Density LB/G	Volume BBL	Message												
02/11/2012	05:37:56	-1	0.4	8.73	33.1	Started Acquisition												
02/11/2012	05:37:58	-1	0.5	8.73	33.1	272 sks 12.5 ppg Lead												
02/11/2012	05:37:59	-1	0.4	8.73	33.1	Rig Up As Per Std. 5												
02/11/2012	05:38:01	-3	0.4	8.73	33.1	Start Job												
02/11/2012	05:38:03	-3	0.5	8.76	33.2	Pressure Test Lines												
02/11/2012	05:38:04	-3	0.5	8.78	33.2	Low Test 500 psi												
02/11/2012	05:39:56	-4	0.4	8.96	34.2													
02/11/2012	05:40:13	-5	0.3	8.97	34.3	Reset Total, Vol = 1.15 bbl												
02/11/2012	05:41:56	-4	0.4	9.00	0.0													
02/11/2012	05:43:56	31	0.0	8.43	0.4													
02/11/2012	05:45:56	2938	0.0	8.43	2.4													
02/11/2012	05:47:56	2693	0.0	8.43	2.4													
02/11/2012	05:49:56	26	0.0	8.43	2.5													
02/11/2012	05:51:56	111	3.5	8.43	7.5													
02/11/2012	05:52:52	168	5.0	8.40	11.8	Start Pumping Spacer												
02/11/2012	05:52:54	162	5.0	8.39	11.9	20 bbl Fresh Water												
02/11/2012	05:53:56	185	5.0	8.43	17.1													
02/11/2012	05:55:56	244	5.1	13.13	27.0													
02/11/2012	05:56:32	227	5.1	12.87	30.1	End Spacer												
02/11/2012	05:56:36	235	5.1	12.88	30.4	Start Cement Slurry												
02/11/2012	05:57:56	213	5.1	12.85	37.2													

Well			Field		Job Start		Customer		Job Number	
EF14E-27 P			N. Parachute		Feb/11/2012		Encana		EF14E-27 P	
Date	Time 24-hr clock	Treating Pressure PSI		Flow Rate B/M	Density LB/G		Volume BBL		Message	
02/11/2012	05:58:42	185		5.1	12.76		41.2		Start Mixing Lead Slurry	
02/11/2012	05:58:43	179		5.1	12.76		41.2		102 bbl 12.5 Lead	
02/11/2012	05:58:44	184		5.1	12.76		41.3		Wet Dry Samples	
02/11/2012	05:58:45	184		5.1	12.77		41.4		Good Returns	
02/11/2012	05:58:48	198		5.1	12.76		41.7		Reset Total, Vol = 42.77 bbl	
02/11/2012	05:59:56	181		5.1	12.55		47.4			
02/11/2012	06:01:56	140		5.1	12.49		57.7			
02/11/2012	06:03:56	146		5.1	12.47		67.9			
02/11/2012	06:05:56	140		5.1	12.45		78.2			
02/11/2012	06:07:56	126		5.1	12.46		88.4			
02/11/2012	06:09:56	140		5.1	12.45		98.6			
02/11/2012	06:11:56	138		5.1	12.44		108.9			
02/11/2012	06:13:00	139		5.1	12.44		114.3		End Lead Slurry	
02/11/2012	06:13:56	137		5.1	12.40		119.1			
02/11/2012	06:15:56	67		3.1	13.40		126.0			
02/11/2012	06:16:09	68		3.1	13.54		126.7		Start Mixing Scav Slurry	
02/11/2012	06:17:56	74		3.3	13.72		132.4			
02/11/2012	06:18:28	75		3.3	13.81		134.1		End Scavenger Slurry	
02/11/2012	06:18:29	76		3.3	13.81		134.2		Start Mixing Tail Slurry	
02/11/2012	06:18:31	75		3.3	13.82		134.3		44 bbl 14.0 Tail	
02/11/2012	06:18:32	75		3.3	13.82		134.4		Good Returns	
02/11/2012	06:19:56	360		6.5	13.89		141.3			
02/11/2012	06:21:56	287		6.6	13.98		154.5			
02/11/2012	06:23:56	175		5.1	14.17		166.6			
02/11/2012	06:24:50	168		5.1	14.25		171.2		End Tail Slurry	
02/11/2012	06:25:32	13		2.9	14.29		174.8		Start Displacement	
02/11/2012	06:25:33	18		1.8	14.30		174.9		137 bbl Fresh Water	
02/11/2012	06:25:56	1		0.0	14.30		175.0			
02/11/2012	06:27:56	10		0.0	14.27		175.1			
02/11/2012	06:29:56	1		0.0	14.27		175.1			
02/11/2012	06:31:56	26		1.5	9.17		179.5			
02/11/2012	06:33:56	70		3.7	8.68		187.1			
02/11/2012	06:35:56	75		4.0	8.52		195.0			
02/11/2012	06:37:56	72		4.1	8.46		203.2			
02/11/2012	06:39:56	60		3.8	8.42		211.2			
02/11/2012	06:41:56	64		4.1	8.42		219.3			
02/11/2012	06:43:56	103		5.0	8.43		228.0			
02/11/2012	06:45:56	139		5.0	8.43		238.0			
02/11/2012	06:47:56	186		4.9	8.43		247.9			
02/11/2012	06:49:56	231		4.9	8.43		257.8			
02/11/2012	06:51:56	346		4.9	8.43		267.6			
02/11/2012	06:53:56	405		4.9	8.43		277.5			
02/11/2012	06:55:56	436		4.9	8.43		287.3			
02/11/2012	06:57:56	498		4.9	8.43		297.1			
02/11/2012	06:59:56	458		3.4	8.43		305.3			
02/11/2012	07:01:56	503		2.5	8.43		312.1			
02/11/2012	07:03:56	557		2.5	8.43		317.1			
02/11/2012	07:05:56	1130		0.0	8.43		320.5			
02/11/2012	07:07:56	1130		0.0	8.43		320.5			
02/11/2012	07:09:56	1130		0.0	8.43		320.5			
02/11/2012	07:11:56	1129		0.0	8.43		320.5			
02/11/2012	07:13:56	-1		0.0	8.44		320.5			
02/11/2012	07:14:07	-1		0.0	8.44		320.5		End Displacement	
02/11/2012	07:14:09	-2		0.0	8.44		320.5		17 bbl Cement to Surface	

Well EF14E-27 P	Field N. Parachute	Job Start Feb/11/2012	Customer Encana	Job Number EF14E-27 P
---------------------------	------------------------------	---------------------------------	---------------------------	---------------------------------

Post Job Summary

Average Pump Rates, bbl/min					Volume of Fluid Injected, bbl			
Slurry 3.9	N2	Mud	Maximum Rate 6.6		Total Slurry 322.7	Mud 0.0	Spacer 32.3	N2
Treating Pressure Summary, psi					Breakdown Fluid			
Maximum 3210	Final -2	Average 343	Bump Plug to	Breakdown	Type	Volume bbl		Density lb/gal
Avg. N2 Percent %	Designed Slurry Volume 0.0 bbl		Displacement 145.6 bbl	Mix Water Temp 57 degF	Cement Circulated to Surface? <input checked="" type="checkbox"/>		Volume bbl	
					Washed Thru Perfs <input type="checkbox"/>		To ft	
Customer or Authorized Representative Andy Goddeyne			Schlumberger Supervisor Jordan Moreland			Circulation Lost <input type="checkbox"/>		Job Completed <input checked="" type="checkbox"/>
					-		-	