
WPX ENERGY ROCKY MOUNTAIN LLC-EBUS

**PA 424-4
PARACHUTE
Garfield County , Colorado**

**Cement Surface Casing
15-Oct-2012**

Post Job Report

The Road to Excellence Starts with Safety

Sold To #: 300721		Ship To #: 2956988		Quote #:		Sales Order #: 9882372	
Customer: WPX ENERGY ROCKY MOUNTAIN LLC-EBUS				Customer Rep: Wilson, W.C.			
Well Name: PA			Well #: 424-4		API/UWI #: 05-045-20083		
Field: PARACHUTE		City (SAP): PARACHUTE		County/Parish: Garfield		State: Colorado	
Lat: N 39.463 deg. OR N 39 deg. 27 min. 48.146 secs.				Long: W 108.007 deg. OR W -109 deg. 59 min. 35.574 secs.			
Contractor: NABORS 577			Rig/Platform Name/Num: NABORS 577				
Job Purpose: Cement Surface Casing							
Well Type: Development Well			Job Type: Cement Surface Casing				
Sales Person: MAYO, MARK			Srvc Supervisor: ARNOLD, EDWARD			MBU ID Emp #: 439784	

Job Personnel

HES Emp Name	Exp Hrs	Emp #	HES Emp Name	Exp Hrs	Emp #	HES Emp Name	Exp Hrs	Emp #
ARNOLD, EDWARD John	7.5	439784	SINCLAIR, DAN J	7.5	338784	VANALSTYNE, TROY L	7.5	420256
WALPOLE, DARREN Livingston	7.5	485294						

Equipment

HES Unit #	Distance-1 way	HES Unit #	Distance-1 way	HES Unit #	Distance-1 way	HES Unit #	Distance-1 way
10567589C	60 mile	10713212	60 mile	11259885	60 mile	11360871	60 mile
11808829	60 mile						

Job Hours

Date	On Location Hours	Operating Hours	Date	On Location Hours	Operating Hours	Date	On Location Hours	Operating Hours
10-15-2012	7.5	3						

TOTAL	Total is the sum of each column separately							
--------------	--	--	--	--	--	--	--	--

Job

Formation Name	Top	Bottom	Called Out	Date	Time	Time Zone
Formation Depth (MD)			On Location	15 - Oct - 2012	06:00	MST
Form Type	BHST		Job Started	15 - Oct - 2012	10:10	MST
Job depth MD	750. ft	Job Depth TVD	750. ft	Job Completed	15 - Oct - 2012	15:29
Water Depth		Wk Ht Above Floor	3. ft	15 - Oct - 2012	16:14	MST
Perforation Depth (MD)	From	To	Departed Loc	15 - Oct - 2012	18:00	MST

Well Data

Description	New / Used	Max pressure psig	Size in	ID in	Weight lbm/ft	Thread	Grade	Top MD ft	Bottom MD ft	Top TVD ft	Bottom TVD ft
Open Hole				13.5				.	750.		
Surface Casing	Unknown		9.625	9.001	32.3		H-40	.	725.9		

Tools and Accessories

Type	Size	Qty	Make	Depth	Type	Size	Qty	Make	Depth	Type	Size	Qty	Make
Guide Shoe					Packer					Top Plug	9.625	1	HES
Float Shoe					Bridge Plug					Bottom Plug			
Float Collar					Retainer					SSR plug set			
Insert Float										Plug Container	9.625	1	HES
Stage Tool										Centralizers			

Miscellaneous Materials

Gelling Agt		Conc		Surfactant		Conc		Acid Type		Qty		Conc	%
Treatment Fld		Conc		Inhibitor		Conc		Sand Type		Size		Qty	

Fluid Data

Stage/Plug #: 1													
Fluid #	Stage Type	Fluid Name			Qty	Qty uom	Mixing Density lbm/gal	Yield ft3/sk	Mix Fluid Gal/sk	Rate bbl/min	Total Mix Fluid Gal/sk		

Stage/Plug #: 1										
Fluid #	Stage Type	Fluid Name	Qty	Qty uom	Mixing Density lbm/gal	Yield ft ³ /sk	Mix Fluid Gal/sk	Rate bbl/min	Total Mix Fluid Gal/sk	
1	Water Spacer		20.00	bbl	8.33	.0	.0	2.4		
2	Tail Cement	VERSACEM (TM) SYSTEM (452010)	220.0	sacks	12.8	2.11	11.75	6	11.75	
3	Displacement		53.00	bbl	8.33	.0	.0	10		
Calculated Values		Pressures		Volumes						
Displacement	53.7	Shut In: Instant		Lost Returns		Cement Slurry	82.6	Pad		
Top Of Cement	SURFACE	5 Min		Cement Returns	18	Actual Displacement	53.7	Treatment		
Frac Gradient		15 Min		Spacers	20	Load and Breakdown		Total Job	156.3	
Rates										
Circulating	RIG	Mixing	6	Displacement	10	Avg. Job	8			
Cement Left In Pipe	Amount	43.2 ft	Reason	Shoe Joint						
Frac Ring # 1 @	ID	Frac ring # 2 @	ID	Frac Ring # 3 @	ID	Frac Ring # 4 @	ID			
The Information Stated Herein Is Correct				Customer Representative Signature						

The Road to Excellence Starts with Safety

Sold To #: 300721		Ship To #: 2956988		Quote #:		Sales Order #: 9882372	
Customer: WPX ENERGY ROCKY MOUNTAIN LLC-EBUS				Customer Rep: Wilson, W.C.			
Well Name: PA			Well #: 424-4			API/UWI #: 05-045-20083	
Field: PARACHUTE		City (SAP): PARACHUTE		County/Parish: Garfield		State: Colorado	
Legal Description:							
Lat: N 39.463 deg. OR N 39 deg. 27 min. 48.146 secs.				Long: W 108.007 deg. OR W -109 deg. 59 min. 35.574 secs.			
Contractor: NABORS 577			Rig/Platform Name/Num: NABORS 577				
Job Purpose: Cement Surface Casing						Ticket Amount:	
Well Type: Development Well			Job Type: Cement Surface Casing				
Sales Person: MAYO, MARK			Srv Supervisor: ARNOLD, EDWARD			MBU ID Emp #: 439784	

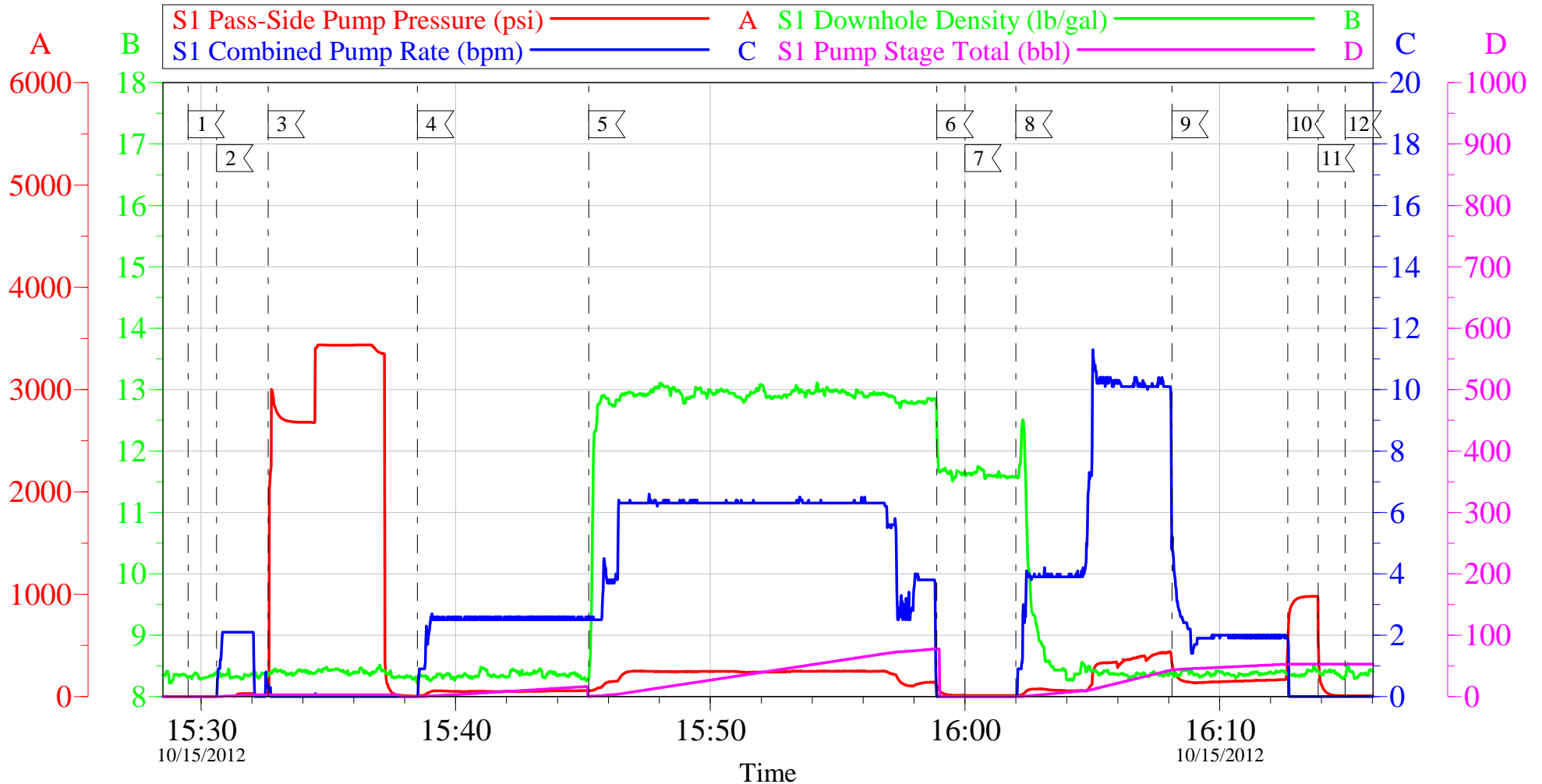
Activity Description	Date/Time	Cht #	Rate bbl/min	Volume bbl		Pressure psig		Comments
				Stage	Total	Tubing	Casing	
Call Out	10/15/2012 06:00							
Pre-Convoy Safety Meeting	10/15/2012 09:00							Including entire cement crew.
Crew Leave Yard	10/15/2012 09:05							
Arrive At Loc	10/15/2012 10:10							Rig Preparing to run casing.
Assessment Of Location Safety Meeting	10/15/2012 10:20							Water; PH 7.5; KCL 450; So4 <200; Fe 0; Calcium 120; Chlorides 0; Temp 50; TDS 290.
Pre-Rig Up Safety Meeting	10/15/2012 14:00							Including entire cement crew.
Rig-Up Equipment	10/15/2012 14:15							1 Elite # 4; 1 660 bulk truck; 1 hard line to floor; 1 line to upright; 1 line to rig tank. 9.625" compact head.
Rig-Up Completed	10/15/2012 15:05							
Pre-Job Safety Meeting	10/15/2012 15:15							Including everyone on location.
Start Job	10/15/2012 15:29							TD 750; TP 725.9; SJ 43.2; OH 13 1/2"; Casing 9.625" 32.3# H-40; Mud 10.2 ppg.
Pump Water	10/15/2012 15:30		2	2			30.0	Fill lines with fresh water.
Test Lines	10/15/2012 15:32					3450.0		Good pressure test, no leaks.
Pump Spacer 1	10/15/2012 15:38		2.5	20			50.0	20 BBL fresh water spacer.
Pump Tail Cement	10/15/2012 15:45		6	82.6			250.0	220 sks Tail Cement, 12.8 ppg, 2.11 cf3, 11.75 gal/sk.

Cementing Job Log

Activity Description	Date/Time	Cht #	Rate bbl/min	Volume bbl		Pressure psig		Comments
				Stage	Total	Tubing	Casing	
Shutdown	10/15/2012 15:58							
Drop Plug	10/15/2012 16:00							Plug left container.
Pump Displacement	10/15/2012 16:02		10	43.7			429.0	Fresh water displacement.
Slow Rate	10/15/2012 16:08		2	10			160.0	Slow rate last 10 BBL's of displacement prior to bumping the plug.
Bump Plug	10/15/2012 16:12				53.7		960.0	Bumped plug, took 500 PSI over.
Check Floats	10/15/2012 16:13							Floats held, 3/4 BBL back. 18 BBL's good cement to surface.
End Job	10/15/2012 16:14							
Pre-Rig Down Safety Meeting	10/15/2012 16:20							Including entire cement crew.
Rig-Down Equipment	10/15/2012 16:25							
Rig-Down Completed	10/15/2012 17:30							
Pre-Convoy Safety Meeting	10/15/2012 17:45							Including entire cement crew.
Crew Leave Location	10/15/2012 18:00							Crew leave location for Service Center or another location.
Other	10/15/2012 18:00							Thank You for using Halliburton. Ed Arnold and Crew.

WPX - PA 424-4

9 5/8" SURFACE



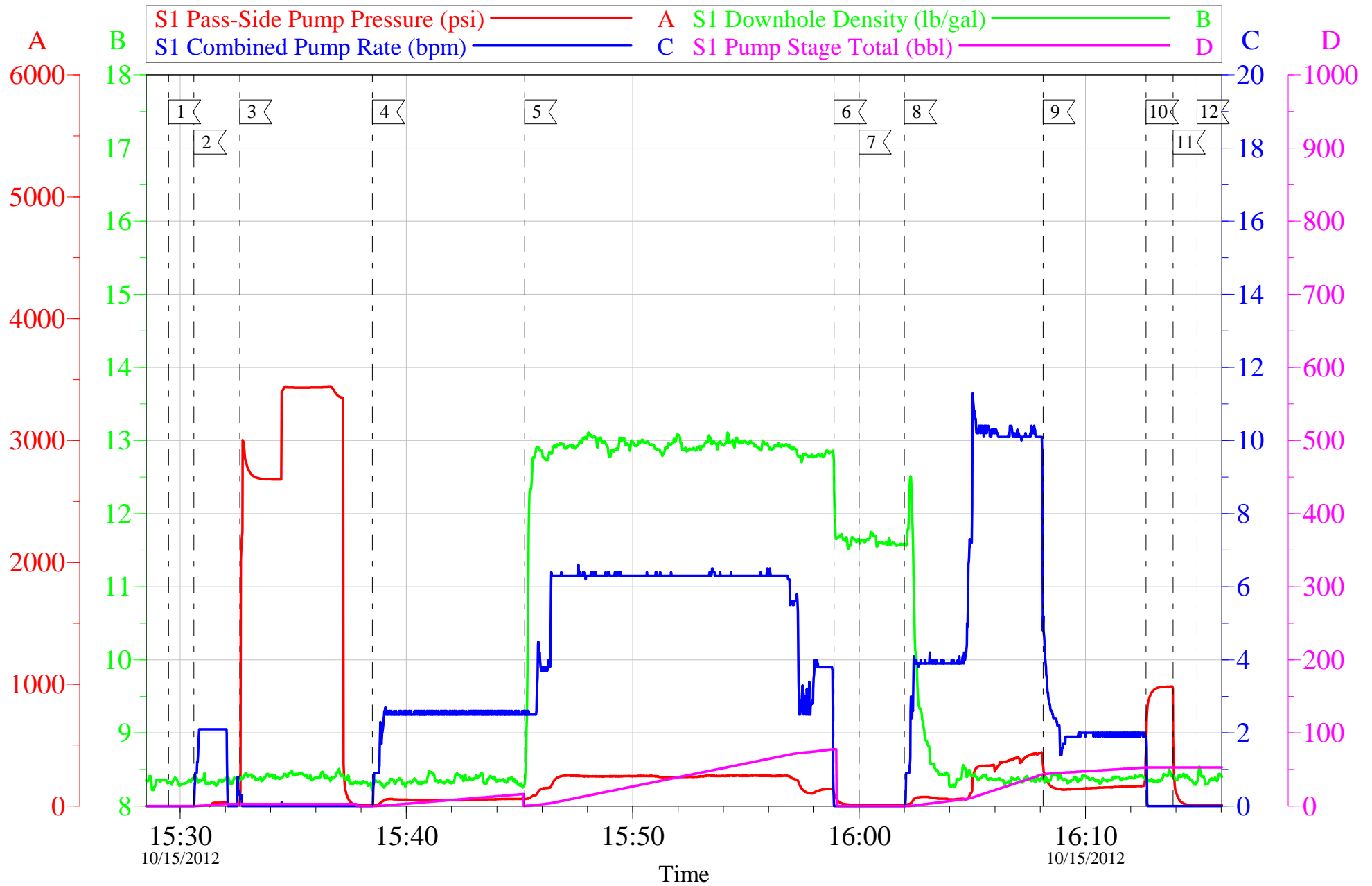
Local Event Log					
1	START JOB	15:29:30	2	FILL LINES	15:30:37
3	TEST LINES	15:32:38	4	H2O SPACER	15:38:30
5	TAIL CEMENT	15:45:13	6	SHUT DOWN	15:58:54
7	DROP PLUG	16:00:00	8	H2O DISPLACEMENT	16:02:00
9	SLOW RATE	16:08:08	10	BUMP PLUG	16:12:41
11	CHECK FLOATS	16:13:52	12	END JOB	16:14:55

Customer: WPX	Job Date: 15-Oct-2012	Sales Order #: 9882372
Well Description: PA 424-4	Job Type: SURFACE	ADC Used: YES
Company Rep: WC WILLSON	Cement Supervisor: ED ARNOLD	Elite #4: DAN SINCLAIR

OptiCem v6.4.10
15-Oct-12 16:55

WPX - PA 424-4

9 5/8" SURFACE



Customer: WPX	Job Date: 15-Oct-2012	Sales Order #: 9882372
Well Description: PA 424-4	Job Type: SURFACE	ADC Used: YES
Company Rep: WC WILLSON	Cement Supervisor: ED ARNOLD	Elite #4: DAN SINCLAIR

OptiCem v6.4.10
15-Oct-12 16:56



Water Analysis Report

Company:	WPX	Date:	10/15/2012
Submitted by:	ED ARNOLD	Date Rec.:	10/15/2012
Attention:	J.TROUT	S.O.#	9882372
Lease	PA	Job Type:	SURFACE
Well #	414-4		

Specific Gravity	MAX	1
pH	8	7.5
Potassium (K)	5000	450 Mg / L
Calcium (Ca)	500	120 Mg / L
Iron (FE2)	300	0 Mg / L
Chlorides (Cl)	3000	0 Mg / L
Sulfates (SO ₄)	1500	<200 Mg / L
Chlorine (Cl ₂)		0 Mg / L
Temp	40-80	50 Deg
Total Dissolved Solids		290 Mg / L

Respectfully: ED ARNOLD

Title: CEMENTING SUPERVISOR

Location: Grand Junction, CO

NOTICE: This report is limited to the described sample tested. Any person using or relying on this report agrees that Halliburton shall not be liable for any loss or damage whether due to act or omission resulting from such report or its use

Sales Order #: 9882372	Line Item: 10	Survey Conducted Date: 10/15/2012
Customer: WPX ENERGY ROCKY MOUNTAIN LLC-EBUS		Job Type (BOM): CMT SURFACE CASING BOM
Customer Representative: WC WILLSON		API / UWI: (leave blank if unknown) 05-045-20083
Well Name: PA		Well Number: 424-4
Well Type: Development Well	Well Country: United States of America	
H2S Present: No	Well State: Colorado	Well County: Garfield

Dear Customer,

We hope that you were satisfied with the service quality of this job performed by Halliburton. It is the aim of our management and service personnel to deliver equipment and service of a standard unmatched in the service sector of the energy industry.

Please take the time to let us know if our performance met with your satisfaction. Please be as critical as possible to ensure we constantly improve our service. Your comments are of great value to us and are intended for the exclusive use of Halliburton.

CUSTOMER SATISFACTION SURVEY

CATEGORY	CUSTOMER SATISFACTION RESPONSE	
Survey Conducted Date	The date the survey was conducted	10/15/2012
Survey Interviewer	The survey interviewer is the person who initiated the survey.	EDWARD ARNOLD (HX46731)
Customer Participation	Did the customer participate in this survey? (Y/N)	Yes
Customer Representative	Enter the Customer representative name	WC WILLSON
HSE	Was our HSE performance satisfactory? Circle Y or N	Yes
Equipment	Were you satisfied with our Equipment? Circle Y or N	Yes
Personnel	Were you satisfied with our people? Circle Y or N	Yes
Customer Comment	Customer's Comment	

CUSTOMER SIGNATURE

Sales Order #: 9882372	Line Item: 10	Survey Conducted Date: 10/15/2012
Customer: WPX ENERGY ROCKY MOUNTAIN LLC-EBUS		Job Type (BOM): CMT SURFACE CASING BOM
Customer Representative: WC WILLSON		API / UWI: (leave blank if unknown) 05-045-20083
Well Name: PA		Well Number: 424-4
Well Type: Development Well	Well Country: United States of America	
H2S Present: No	Well State: Colorado	Well County: Garfield

KEY PERFORMANCE INDICATORS

General	
Survey Conducted Date The date the survey was conducted	10/15/2012

Cementing KPI Survey	
Type of Job Select the type of job. (Cementing or Non-Cementing)	0
Select the Maximum Deviation range for this Job What is the highest deviation for the job you just completed? This may not be the maximum well deviation.	Vertical
Total Operating Time (hours) Total Operating Hours Including Rig-up, Pumping, Rig-down. Enter in decimal format.	3
HSE Incident, Accident, Injury HSE Incident, Accident, Injury. This should be recordable incidents only.	No
Was the job purpose achieved? Was the job delivered correctly as per customer agreed design?	Yes
Operating Hours (Pumping Hours) Total number of hours pumping fluid on this job. Enter in decimal format.	1
Customer Non-Productive Rig Time (hrs) Lost time due to Halliburton in the start, execution, or completion of an ordered service or product, or delays in a follow-on service. Enter in decimal format. 0 if none.	0
Type of Rig Classification Job Was Performed Type Of Rig (classification) Job Was Performed On	Drilling Rig (Portable)
Number Of JSAs Performed Number Of Jsas Performed	5
Number of Unplanned Shutdowns Unplanned shutdown is when injection stops for any period of time.	0
Was this a Primary Cement Job (Yes / No)	Yes

Sales Order #: 9882372	Line Item: 10	Survey Conducted Date: 10/15/2012
Customer: WPX ENERGY ROCKY MOUNTAIN LLC-EBUS		Job Type (BOM): CMT SURFACE CASING BOM
Customer Representative: WC WILLSON		API / UWI: (leave blank if unknown) 05-045-20083
Well Name: PA		Well Number: 424-4
Well Type: Development Well	Well Country: United States of America	
H2S Present: No	Well State: Colorado	Well County: Garfield

Primary Cement Job= Casing job, Liner job, or Tie-back job.	
Did We Run Wiper Plugs? Did We Run Top And Bottom Casing Wiper Plugs?	Top
Mixing Density of Job Stayed in Designed Density Range (0-100%) Density Range defined as +/- .20 ppg. Calculation: Total BBLs cement mixed at designed density divided by total BBLs of cement multiplied by 100	97
Was Automated Density Control Used? Was Automated Density Control (ADC) Used ?	Yes
Pump Rate (percent) of Job Stayed At Designed Pump Rate Pump Rate range defined as +/- 1bbl/min. Calculation: Total BBLs of fluid pumped at the designed rate divided by Total BBLs of fluid pumped, multiplied by 100	98
Nbr of Remedial Sqz Jobs Rqd - Competition Number Of Remedial Squeeze Jobs Required After Primary Job Performed By Competition	0
Nbr of Remedial Plug Jobs Rqd - HES Number Of Remedial Plug Jobs Needed After Primary Plug Pumped By HES	0
Nbr of Remedial Sqz Jobs Rqd - HES Number Of Remedial Squeeze Jobs Required After Primary Job Performed By HES	0