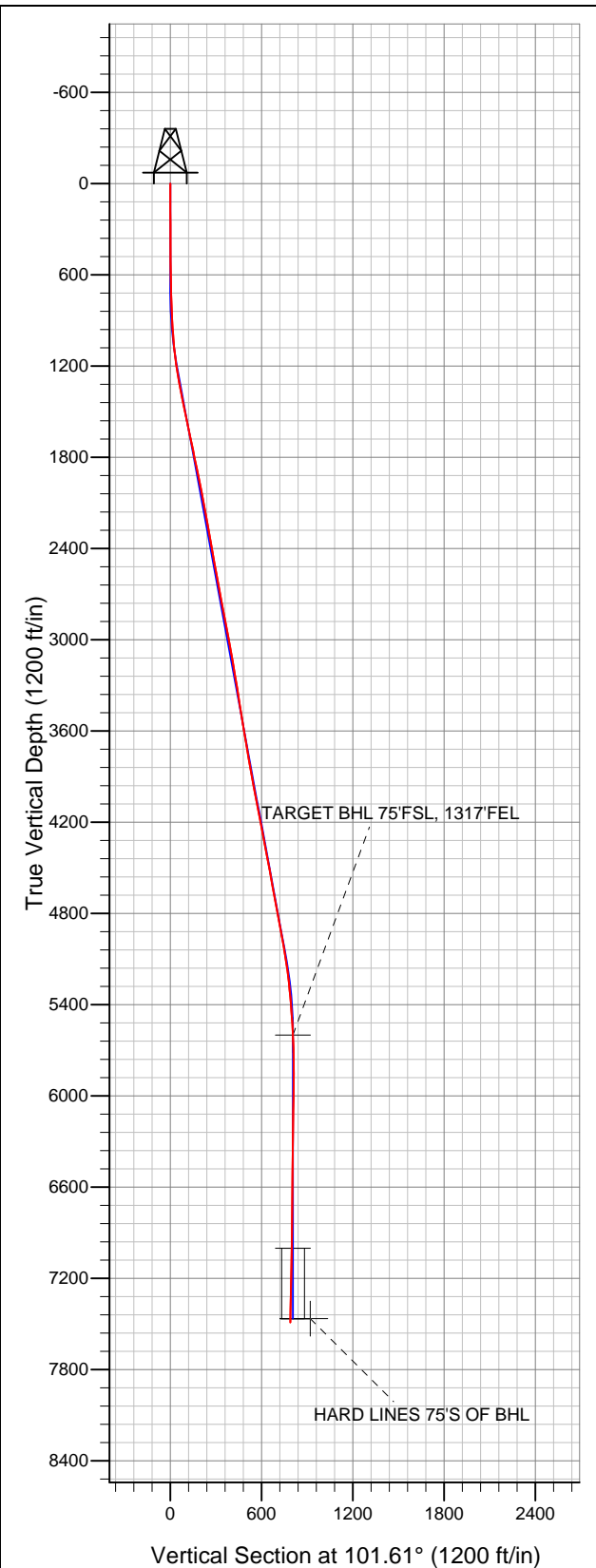


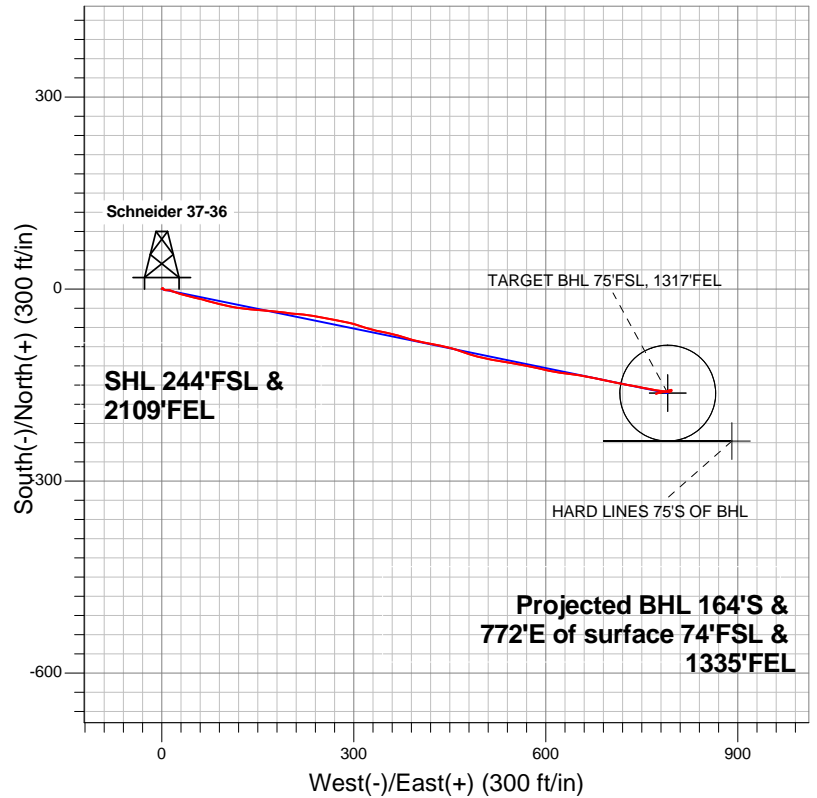
Well Name: Schneider 37-36

Surface Location: Baldrige & Schneider Pad Sec.36-T7N-R67W
 North American Datum 1983 US State Plane 1983Colorado Northern Zone
 Ground Elevation: 4877.0

+N/-S	+E/-W	Northing	Easting	Latitude	Longitude	Slot
0.0	0.0	1434453.88	3183535.63	40.524101	-104.839795	
		Original Well Elev	WELL @ 4893.0ft (Original Well Elev)			



BAYSWATER EXPLORATION & PRODUCTION



LEGEND

- Wellbore #1
- Schneider 37-36, Wellbore #1, Plan #1 (4-12-12) V0
- Survey #1

Final Survey Plot

Projected Final Survey -
 7560'MD & 7489'TVD @ 790°VS
 1.10 deg Inc 247.80 deg AZ

Project: SEC.36-T7N-R67W
 Site: Baldrige & Schneider Pad Sec.36-T7N-R67W
 Well: Schneider 37-36
 Plan: Wellbore #1



BAYSWATER EXPLORATION & PRODUCTION

SEC.36-T7N-R67W

Baldrige & Schneider Pad Sec.36-T7N-R67W

Schneider 37-36

Wellbore #1

Survey: Survey #1

Standard Survey Report

10 August, 2012

Company:	BAYSWATER EXPLORATION & PRODUCTION	Local Co-ordinate Reference:	Well Schneider 37-36
Project:	SEC.36-T7N-R67W	TVD Reference:	WELL @ 4893.0ft (Original Well Elev)
Site:	Baldrige & Schneider Pad Sec.36-T7N-R67W	MD Reference:	WELL @ 4893.0ft (Original Well Elev)
Well:	Schneider 37-36	North Reference:	True
Wellbore:	Wellbore #1	Survey Calculation Method:	Minimum Curvature
Design:	Wellbore #1	Database:	Landmark

Project	SEC.36-T7N-R67W, Weld County, Colorado		
Map System:	US State Plane 1983	System Datum:	Mean Sea Level
Geo Datum:	North American Datum 1983		Using Well Reference Point
Map Zone:	Colorado Northern Zone		Using geodetic scale factor

Site		Baldridge & Schneider Pad Sec.36-T7N-R67W			
Site Position:		Northing:	1,434,452.01 ft	Latitude:	40.524098
From:	Lat/Long	Easting:	3,183,430.84 ft	Longitude:	-104.840172
Position Uncertainty:	0.0 ft	Slot Radius:	"	Grid Convergence:	0.43 °

Well	Schneider 37-36					
Well Position	+N-S	0.0 ft	Northing:	1,434,453.88 ft	Latitude:	40.524101
	+E-W	0.0 ft	Easting:	3,183,535.63 ft	Longitude:	-104.839795
Position Uncertainty		0.0 ft	Wellhead Elevation:	ft	Ground Level:	4,877.0 ft

Wellbore	Wellbore #1				
Magnetics	Model Name	Sample Date	Declination (°)	Dip Angle (°)	Field Strength (nT)
	IGRF2010	7/30/2012	8.76	67.10	53,069

Design	Wellbore #1				
Audit Notes:					
Version:	1.0	Phase:	ACTUAL	Tie On Depth:	0.0
Vertical Section:	Depth From (TVD) (ft)	+N/-S (ft)	+E/-W (ft)	Direction (°)	
	0.0	0.0	0.0	101.61	

Survey Program		Date	8/10/2012	
From (ft)	To (ft)	Survey (Wellbore)	Tool Name	Description
93.0	7,560.0	Survey #1 (Wellbore #1)	MWD	MWD - Standard

Survey	Wellbore Data									
	Measured Depth (ft)	Inclination (°)	Azimuth (°)	Vertical Depth (ft)	+N/-S (ft)	+E/-W (ft)	Vertical Section (ft)	Dogleg Rate (°/100ft)	Build Rate (°/100ft)	Turn Rate (°/100ft)
	0.0	0.00	0.00	0.0	0.0	0.0	0.0	0.00	0.00	0.00
	93.0	0.80	32.80	93.0	0.5	0.4	0.2	0.86	0.86	0.00
	180.0	0.50	18.10	180.0	1.4	0.8	0.5	0.39	-0.34	-16.90
	270.0	0.40	107.00	270.0	1.7	1.2	0.9	0.70	-0.11	98.78
	362.0	0.60	108.60	362.0	1.5	2.0	1.7	0.22	0.22	1.74
	453.0	0.60	171.40	453.0	0.8	2.5	2.3	0.69	0.00	69.01
	544.0	0.60	153.60	544.0	-0.1	2.8	2.7	0.20	0.00	-19.56
	578.0	0.70	138.80	578.0	-0.4	3.0	3.0	0.57	0.29	-43.53
	642.0	1.10	121.10	642.0	-1.0	3.8	3.9	0.75	0.63	-27.66
	736.0	1.60	93.10	735.9	-1.5	5.9	6.1	0.87	0.53	-29.79
	829.0	3.10	88.70	828.9	-1.5	9.7	9.8	1.62	1.61	-4.73
	923.0	2.60	114.90	922.7	-2.4	14.2	14.3	1.47	-0.53	27.87

Company:	BAYSWATER EXPLORATION & PRODUCTION	Local Co-ordinate Reference:	Well Schneider 37-36
Project:	SEC.36-T7N-R67W	TVD Reference:	WELL @ 4893.0ft (Original Well Elev)
Site:	Baldridge & Schneider Pad Sec.36-T7N-R67W	MD Reference:	WELL @ 4893.0ft (Original Well Elev)
Well:	Schneider 37-36	North Reference:	True
Wellbore:	Wellbore #1	Survey Calculation Method:	Minimum Curvature
Design:	Wellbore #1	Database:	Landmark

Survey									
Measured Depth (ft)	Inclination (°)	Azimuth (°)	Vertical Depth (ft)	+N/-S (ft)	+E/-W (ft)	Vertical Section (ft)	Dogleg Rate (°/100ft)	Build Rate (°/100ft)	Turn Rate (°/100ft)
1,017.0	4.80	107.40	1,016.5	-4.5	19.8	20.3	2.39	2.34	-7.98
1,110.0	6.40	107.70	1,109.1	-7.2	28.5	29.4	1.72	1.72	0.32
1,204.0	8.30	104.70	1,202.3	-10.5	40.1	41.3	2.06	2.02	-3.19
1,298.0	10.00	103.30	1,295.1	-14.1	54.6	56.3	1.82	1.81	-1.49
1,391.0	11.30	105.10	1,386.5	-18.3	71.2	73.5	1.44	1.40	1.94
1,485.0	11.80	104.70	1,478.6	-23.2	89.4	92.2	0.54	0.53	-0.43
1,579.0	12.00	101.20	1,570.6	-27.5	108.3	111.6	0.80	0.21	-3.72
1,673.0	11.90	96.10	1,662.6	-30.4	127.5	131.0	1.13	-0.11	-5.43
1,766.0	11.30	95.60	1,753.7	-32.4	146.1	149.6	0.65	-0.65	-0.54
1,860.0	12.40	93.50	1,845.7	-33.9	165.4	168.8	1.26	1.17	-2.23
1,954.0	11.30	98.90	1,937.7	-35.9	184.5	188.0	1.66	-1.17	5.74
2,047.0	11.30	95.40	2,028.9	-38.2	202.6	206.1	0.74	0.00	-3.76
2,147.0	10.10	95.20	2,127.1	-39.9	221.1	224.6	1.20	-1.20	-0.20
2,235.0	10.60	99.50	2,213.7	-41.9	236.8	240.3	1.05	0.57	4.89
2,328.0	9.90	99.80	2,305.2	-44.7	253.1	256.9	0.75	-0.75	0.32
2,422.0	10.10	101.60	2,397.8	-47.7	269.1	273.2	0.39	0.21	1.91
2,516.0	10.40	101.00	2,490.3	-51.0	285.5	289.9	0.34	0.32	-0.64
2,609.0	10.30	107.00	2,581.8	-55.0	301.7	306.6	1.16	-0.11	6.45
2,703.0	10.20	108.30	2,674.3	-60.1	317.6	323.2	0.27	-0.11	1.38
2,797.0	11.80	102.80	2,766.5	-64.9	334.9	341.1	2.03	1.70	-5.85
2,890.0	10.30	100.70	2,857.8	-68.5	352.4	358.9	1.67	-1.61	-2.26
2,984.0	10.30	106.10	2,950.3	-72.4	368.7	375.7	1.03	0.00	5.74
3,078.0	10.20	108.60	3,042.8	-77.4	384.7	392.4	0.49	-0.11	2.66
3,172.0	10.10	100.00	3,135.3	-81.5	400.7	408.9	1.61	-0.11	-9.15
3,265.0	9.90	102.80	3,226.9	-84.7	416.5	425.0	0.57	-0.22	3.01
3,359.0	8.50	101.70	3,319.7	-87.9	431.2	440.0	1.50	-1.49	-1.17
3,453.0	9.20	101.00	3,412.6	-90.7	445.3	454.5	0.75	0.74	-0.74
3,546.0	9.50	109.10	3,504.4	-94.6	459.9	469.5	1.45	0.32	8.71
3,640.0	9.70	109.70	3,597.0	-99.8	474.7	485.1	0.24	0.21	0.64
3,734.0	9.00	104.40	3,689.8	-104.3	489.3	500.2	1.18	-0.74	-5.64
3,827.0	9.20	102.60	3,781.6	-107.8	503.6	514.9	0.37	0.22	-1.94
3,921.0	11.00	100.00	3,874.2	-111.0	519.7	531.4	1.97	1.91	-2.77
4,015.0	11.00	99.80	3,966.4	-114.0	537.4	549.4	0.04	0.00	-0.21
4,108.0	10.60	98.60	4,057.8	-116.8	554.6	566.8	0.49	-0.43	-1.29
4,202.0	10.60	102.60	4,150.2	-120.0	571.6	584.0	0.78	0.00	4.26
4,296.0	10.50	103.20	4,242.6	-123.9	588.4	601.2	0.16	-0.11	0.64
4,390.0	10.90	101.40	4,335.0	-127.6	605.4	618.7	0.55	0.43	-1.91
4,483.0	10.70	98.80	4,426.3	-130.6	622.6	636.1	0.57	-0.22	-2.80
4,577.0	10.90	97.70	4,518.6	-133.2	640.0	653.7	0.31	0.21	-1.17
4,671.0	10.60	98.00	4,611.0	-135.6	657.4	671.2	0.32	-0.32	0.32
4,764.0	10.20	103.50	4,702.5	-138.7	673.8	688.0	1.15	-0.43	5.91
4,858.0	10.90	101.00	4,794.9	-142.3	690.7	705.2	0.89	0.74	-2.66
4,952.0	10.50	101.70	4,887.2	-145.7	707.8	722.6	0.45	-0.43	0.74
5,045.0	9.90	100.30	4,978.8	-148.9	723.9	739.1	0.70	-0.65	-1.51
5,139.0	9.20	100.30	5,071.5	-151.7	739.3	754.7	0.74	-0.74	0.00
5,233.0	7.70	101.20	5,164.5	-154.2	752.8	768.5	1.60	-1.60	0.96
5,326.0	6.40	100.50	5,256.7	-156.4	764.1	779.9	1.40	-1.40	-0.75
5,420.0	5.30	100.20	5,350.3	-158.1	773.5	789.5	1.17	-1.17	-0.32
5,514.0	4.10	98.10	5,443.9	-159.4	781.1	797.2	1.29	-1.28	-2.23
5,608.0	3.00	95.90	5,537.8	-160.1	786.9	803.0	1.18	-1.17	-2.34
5,670.4	2.93	93.84	5,600.0	-160.4	790.1	806.2	0.20	-0.11	-3.30
TARGET BHL 75'FSL, 1317'FEL									
5,701.0	2.90	92.80	5,630.6	-160.5	791.6	807.7	0.20	-0.10	-3.41

Company:	BAYSWATER EXPLORATION & PRODUCTION	Local Co-ordinate Reference:	Well Schneider 37-36
Project:	SEC.36-T7N-R67W	TVD Reference:	WELL @ 4893.0ft (Original Well Elev)
Site:	Baldridge & Schneider Pad Sec.36-T7N-R67W	MD Reference:	WELL @ 4893.0ft (Original Well Elev)
Well:	Schneider 37-36	North Reference:	True
Wellbore:	Wellbore #1	Survey Calculation Method:	Minimum Curvature
Design:	Wellbore #1	Database:	Landmark

Survey									
Measured Depth (ft)	Inclination (°)	Azimuth (°)	Vertical Depth (ft)	+N/-S (ft)	+E/-W (ft)	Vertical Section (ft)	Dogleg Rate (°/100ft)	Build Rate (°/100ft)	Turn Rate (°/100ft)
5,795.0	1.80	64.70	5,724.6	-159.9	795.3	811.2	1.66	-1.17	-29.89
5,889.0	1.40	352.40	5,818.5	-158.2	796.5	812.1	2.04	-0.43	-76.92
5,982.0	0.90	244.10	5,911.5	-157.4	795.7	811.1	2.03	-0.54	-116.45
6,076.0	0.80	252.60	6,005.5	-157.9	794.4	809.9	0.17	-0.11	9.04
6,170.0	0.80	253.60	6,099.5	-158.3	793.2	808.8	0.01	0.00	1.06
6,263.0	0.90	251.00	6,192.5	-158.7	791.9	807.6	0.12	0.11	-2.80
6,357.0	0.70	239.60	6,286.5	-159.2	790.7	806.5	0.27	-0.21	-12.13
6,451.0	0.80	251.20	6,380.5	-159.7	789.5	805.5	0.19	0.11	12.34
6,544.0	0.70	254.70	6,473.5	-160.1	788.4	804.5	0.12	-0.11	3.76
6,638.0	0.60	258.70	6,567.5	-160.3	787.3	803.5	0.12	-0.11	4.26
6,732.0	0.70	262.60	6,661.4	-160.5	786.3	802.5	0.12	0.11	4.15
6,825.0	0.70	279.20	6,754.4	-160.5	785.2	801.4	0.22	0.00	17.85
6,919.0	0.70	270.30	6,848.4	-160.4	784.0	800.3	0.12	0.00	-9.47
7,013.0	0.80	251.00	6,942.4	-160.6	782.8	799.1	0.29	0.11	-20.53
7,071.5	0.80	251.31	7,000.9	-160.9	782.1	798.4	0.01	0.00	0.53
TARGET CIRCLE 75'FSL & 1317'FEL									
7,107.0	0.80	251.50	7,036.4	-161.0	781.6	798.0	0.01	0.00	0.53
7,200.0	1.20	257.80	7,129.4	-161.4	780.0	796.5	0.45	0.43	6.77
7,294.0	1.30	255.70	7,223.4	-161.9	778.0	794.7	0.12	0.11	-2.23
7,388.0	1.40	252.90	7,317.4	-162.5	775.9	792.7	0.13	0.11	-2.98
7,481.0	1.20	249.10	7,410.3	-163.2	773.9	790.9	0.23	-0.22	-4.09
7,534.0	1.13	248.25	7,463.3	-163.6	772.9	790.0	0.13	-0.13	-1.60
HARD LINES 75'S OF BHL									
7,560.0	1.10	247.80	7,489.3	-163.8	772.4	789.6	0.13	-0.13	-1.74

Checked By: _____ Approved By: _____ Date: _____