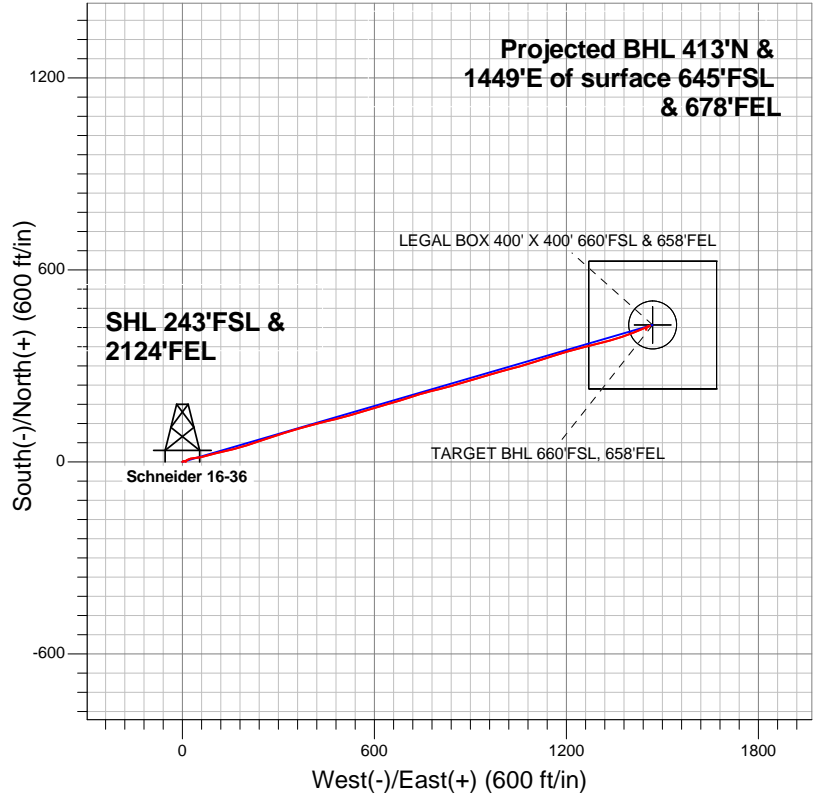
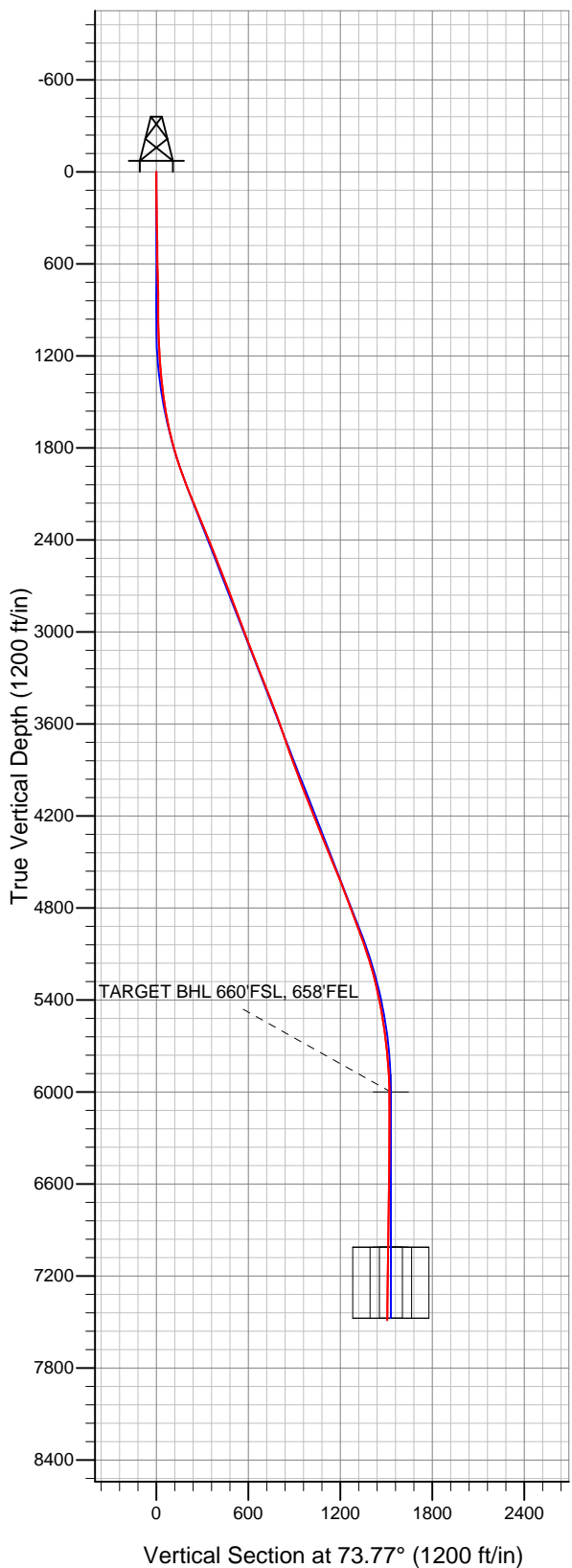


# Well Name: Schneider 16-36

Surface Location: Baldrige & Schneider Pad Sec.36-T7N-R67W  
North American Datum 1983 US State Plane 1983Colorado Northern Zone  
Ground Elevation: 4877.0

+N/-S	+E/-W	Northing	Easting	Latitude	Longitude	Slot
0.0	0.0	1434453.40	3183520.62	40.524100	-104.839849	
Original Well Elev			WELL @ 4893.0ft (Original Well Elev)			

## BAYSWATER EXPLORATION & PRODUCTION



### LEGEND

- Wellbore #1
- Schneider 16-36, Wellbore #1, Plan #1 (8-08-12) R V0
- Survey #1

## Final Survey Plot

Projected Final Survey -  
7745'MD & 7487'TVD @ 1507'VS  
1.10 deg Inc 197.70 deg AZ

Project: SEC.36-T7N-R67W  
Site: Baldrige & Schneider Pad Sec.36-T7N-R67W  
Well: Schneider 16-36  
Plan: Wellbore #1



# **BAYSWATER EXPLORATION & PRODUCTION**

**SEC.36-T7N-R67W**

**Baldrige & Schneider Pad Sec.36-T7N-R67W**

**Schneider 16-36**

**Wellbore #1**

**Survey: Survey #1**

## **Standard Survey Report**

**20 August, 2012**

<b>Company:</b>	BAYSWATER EXPLORATION & PRODUCTION	<b>Local Co-ordinate Reference:</b>	Well Schneider 16-36
<b>Project:</b>	SEC.36-T7N-R67W	<b>TVD Reference:</b>	WELL @ 4893.0ft (Original Well Elev)
<b>Site:</b>	Baldrige & Schneider Pad Sec.36-T7N-R67W	<b>MD Reference:</b>	WELL @ 4893.0ft (Original Well Elev)
<b>Well:</b>	Schneider 16-36	<b>North Reference:</b>	True
<b>Wellbore:</b>	Wellbore #1	<b>Survey Calculation Method:</b>	Minimum Curvature
<b>Design:</b>	Wellbore #1	<b>Database:</b>	Landmark

<b>Project</b>	SEC.36-T7N-R67W, Weld County, Colorado		
<b>Map System:</b>	US State Plane 1983	<b>System Datum:</b>	Mean Sea Level
<b>Geo Datum:</b>	North American Datum 1983		Using Well Reference Point
<b>Map Zone:</b>	Colorado Northern Zone		Using geodetic scale factor

Site		Baldridge & Schneider Pad Sec.36-T7N-R67W			
Site Position:		Northing:	1,434,452.01 ft	Latitude:	40.524098
From:	Lat/Long	Easting:	3,183,430.84 ft	Longitude:	-104.840172
Position Uncertainty:	0.0 ft	Slot Radius:	"	Grid Convergence:	0.43 °

Well	Schneider 16-36					
Well Position	+N-S	0.0 ft	Northing:	1,434,453.40 ft	Latitude:	40.524100
	+E-W	0.0 ft	Easting:	3,183,520.62 ft	Longitude:	-104.839849
Position Uncertainty		0.0 ft	Wellhead Elevation:	ft	Ground Level:	4,877.0 ft

Wellbore	Wellbore #1				
Magnetics	Model Name	Sample Date	Declination (°)	Dip Angle (°)	Field Strength (nT)
	IGRF2010	8/8/2012	8.76	67.10	53,067

Design	Wellbore #1				
Audit Notes:					
Version:	1.0	Phase:	ACTUAL	Tie On Depth:	0.0
Vertical Section:	Depth From (TVD) (ft)	+N/-S (ft)	+E/-W (ft)	Direction (°)	
	6,000.0	0.0	0.0	73.77	

Survey Program		Date	8/20/2012	
From (ft)	To (ft)	Survey (Wellbore)	Tool Name	Description
96.0	7,745.0	Survey #1 (Wellbore #1)	MWD	MWD - Standard

Survey										
	Measured Depth (ft)	Inclination (°)	Azimuth (°)	Vertical Depth (ft)	+N/-S (ft)	+E/-W (ft)	Vertical Section (ft)	Dogleg Rate (°/100ft)	Build Rate (°/100ft)	Turn Rate (°/100ft)
	0.0	0.00	0.00	0.0	0.0	0.0	0.0	0.00	0.00	0.00
	96.0	0.40	24.10	96.0	0.3	0.1	0.2	0.42	0.42	0.00
	184.0	1.00	58.02	184.0	1.0	0.9	1.2	0.80	0.68	38.55
	272.0	0.80	61.10	272.0	1.7	2.1	2.5	0.23	-0.23	3.50
	363.0	1.50	76.30	363.0	2.3	3.8	4.3	0.83	0.77	16.70
	455.0	0.60	113.50	454.9	2.4	5.4	5.9	1.18	-0.98	40.43
	546.0	1.00	126.20	545.9	1.7	6.5	6.7	0.48	0.44	13.96
	620.0	1.60	113.70	619.9	0.9	8.0	7.9	0.89	0.81	-16.89
	641.0	1.90	107.00	640.9	0.7	8.6	8.4	1.73	1.43	-31.90
	735.0	1.60	51.50	734.9	1.1	11.1	10.9	1.76	-0.32	-59.04
	828.0	0.60	342.90	827.9	2.3	12.0	12.1	1.60	-1.08	-73.76
	922.0	0.60	335.00	921.9	3.3	11.6	12.1	0.09	0.00	-8.40

<b>Company:</b>	BAYSWATER EXPLORATION & PRODUCTION	<b>Local Co-ordinate Reference:</b>	Well Schneider 16-36
<b>Project:</b>	SEC.36-T7N-R67W	<b>TVD Reference:</b>	WELL @ 4893.0ft (Original Well Elev)
<b>Site:</b>	Baldridge & Schneider Pad Sec.36-T7N-R67W	<b>MD Reference:</b>	WELL @ 4893.0ft (Original Well Elev)
<b>Well:</b>	Schneider 16-36	<b>North Reference:</b>	True
<b>Wellbore:</b>	Wellbore #1	<b>Survey Calculation Method:</b>	Minimum Curvature
<b>Design:</b>	Wellbore #1	<b>Database:</b>	Landmark

Survey									
Measured Depth (ft)	Inclination (°)	Azimuth (°)	Vertical Depth (ft)	+N/-S (ft)	+E/-W (ft)	Vertical Section (ft)	Dogleg Rate (°/100ft)	Build Rate (°/100ft)	Turn Rate (°/100ft)
1,016.0	1.70	54.80	1,015.8	4.5	12.5	13.3	1.81	1.17	84.89
1,109.0	2.60	67.10	1,108.8	6.1	15.6	16.7	1.08	0.97	13.23
1,203.0	3.80	68.50	1,202.6	8.1	20.5	21.9	1.28	1.28	1.49
1,297.0	4.70	74.70	1,296.4	10.3	27.1	28.9	1.07	0.96	6.60
1,390.0	6.40	83.10	1,388.9	11.9	35.9	37.8	2.02	1.83	9.03
1,484.0	7.90	84.30	1,482.2	13.1	47.5	49.3	1.60	1.60	1.28
1,578.0	10.00	76.40	1,575.0	15.7	61.9	63.8	2.58	2.23	-8.40
1,671.0	12.30	75.40	1,666.3	20.1	79.3	81.8	2.48	2.47	-1.08
1,765.0	14.60	75.70	1,757.7	25.6	100.5	103.6	2.45	2.45	0.32
1,859.0	16.90	76.40	1,848.2	31.7	125.3	129.1	2.46	2.45	0.74
1,953.0	19.10	77.03	1,937.6	38.4	153.5	158.1	2.35	2.34	0.67
2,046.0	20.70	73.30	2,025.0	46.5	184.1	189.8	2.20	1.72	-4.01
2,140.0	22.00	71.30	2,112.6	56.9	216.7	224.0	1.58	1.38	-2.13
2,234.0	23.20	72.00	2,199.3	68.3	251.0	260.1	1.31	1.28	0.74
2,327.0	22.70	71.20	2,285.0	79.7	285.4	296.3	0.63	-0.54	-0.86
2,421.0	21.70	73.80	2,372.0	90.4	319.3	331.8	1.49	-1.06	2.77
2,515.0	21.50	72.70	2,459.4	100.4	352.4	366.4	0.48	-0.21	-1.17
2,608.0	21.50	75.00	2,545.9	109.9	385.1	400.5	0.91	0.00	2.47
2,702.0	21.40	75.70	2,633.4	118.6	418.4	434.9	0.29	-0.11	0.74
2,796.0	21.30	75.90	2,721.0	127.0	451.6	469.1	0.13	-0.11	0.21
2,889.0	20.20	75.00	2,807.9	135.2	483.5	502.0	1.23	-1.18	-0.97
2,983.0	20.30	75.90	2,896.1	143.4	515.0	534.5	0.35	0.11	0.96
3,077.0	20.20	73.60	2,984.3	152.0	546.3	567.0	0.85	-0.11	-2.45
3,170.0	22.50	73.10	3,070.9	161.7	578.8	600.9	2.48	2.47	-0.54
3,264.0	21.40	72.20	3,158.1	172.1	612.3	636.0	1.22	-1.17	-0.96
3,358.0	21.60	74.90	3,245.6	181.9	645.3	670.5	1.07	0.21	2.87
3,452.0	21.00	73.30	3,333.2	191.2	678.2	704.6	0.89	-0.64	-1.70
3,545.0	21.40	71.70	3,419.9	201.4	710.3	738.2	0.76	0.43	-1.72
3,639.0	20.80	73.80	3,507.6	211.4	742.6	772.1	1.03	-0.64	2.23
3,733.0	19.70	76.30	3,595.8	219.8	774.0	804.6	1.49	-1.17	2.66
3,826.0	18.10	76.10	3,683.7	227.0	803.2	834.7	1.72	-1.72	-0.22
3,920.0	20.00	74.00	3,772.6	234.9	832.9	865.3	2.15	2.02	-2.23
4,014.0	20.50	74.00	3,860.8	243.9	864.1	897.9	0.53	0.53	0.00
4,107.0	20.80	73.60	3,947.8	253.0	895.6	930.7	0.36	0.32	-0.43
4,201.0	20.60	72.60	4,035.7	262.7	927.4	963.9	0.43	-0.21	-1.06
4,295.0	21.40	73.80	4,123.5	272.4	959.7	997.6	0.97	0.85	1.28
4,388.0	22.10	74.50	4,209.9	281.8	992.8	1,032.0	0.80	0.75	0.75
4,482.0	22.20	74.90	4,296.9	291.2	1,027.0	1,067.5	0.19	0.11	0.43
4,576.0	22.00	74.50	4,384.0	300.5	1,061.1	1,102.8	0.27	-0.21	-0.43
4,670.0	22.90	72.20	4,470.9	310.8	1,095.5	1,138.7	1.34	0.96	-2.45
4,763.0	22.10	71.90	4,556.8	321.8	1,129.4	1,174.3	0.87	-0.86	-0.32
4,857.0	20.90	72.60	4,644.3	332.3	1,162.2	1,208.7	1.31	-1.28	0.74
4,951.0	20.80	73.40	4,732.1	342.1	1,194.2	1,242.2	0.32	-0.11	0.85
5,044.0	20.20	75.20	4,819.2	350.9	1,225.5	1,274.7	0.94	-0.65	1.94
5,138.0	21.10	75.60	4,907.2	359.3	1,257.6	1,307.9	0.97	0.96	0.43
5,232.0	20.00	75.90	4,995.2	367.4	1,289.6	1,340.9	1.18	-1.17	0.32
5,325.0	18.10	75.20	5,083.1	374.9	1,319.0	1,371.2	2.06	-2.04	-0.75
5,419.0	16.40	74.50	5,172.9	382.2	1,345.9	1,399.1	1.82	-1.81	-0.74
5,513.0	14.40	71.00	5,263.5	389.6	1,369.7	1,424.0	2.35	-2.13	-3.72
5,606.0	12.30	69.90	5,354.0	396.7	1,390.0	1,445.4	2.27	-2.26	-1.18
5,700.0	10.70	69.80	5,446.1	403.2	1,407.5	1,464.1	1.70	-1.70	-0.11
5,794.0	9.00	68.70	5,538.7	408.9	1,422.6	1,480.2	1.82	-1.81	-1.17
5,887.0	7.20	66.10	5,630.8	413.9	1,434.7	1,493.2	1.97	-1.94	-2.80

<b>Company:</b>	BAYSWATER EXPLORATION & PRODUCTION	<b>Local Co-ordinate Reference:</b>	Well Schneider 16-36
<b>Project:</b>	SEC.36-T7N-R67W	<b>TVD Reference:</b>	WELL @ 4893.0ft (Original Well Elev)
<b>Site:</b>	Baldrige & Schneider Pad Sec.36-T7N-R67W	<b>MD Reference:</b>	WELL @ 4893.0ft (Original Well Elev)
<b>Well:</b>	Schneider 16-36	<b>North Reference:</b>	True
<b>Wellbore:</b>	Wellbore #1	<b>Survey Calculation Method:</b>	Minimum Curvature
<b>Design:</b>	Wellbore #1	<b>Database:</b>	Landmark

Survey									
Measured Depth (ft)	Inclination (°)	Azimuth (°)	Vertical Depth (ft)	+N/-S (ft)	+E/-W (ft)	Vertical Section (ft)	Dogleg Rate (°/100ft)	Build Rate (°/100ft)	Turn Rate (°/100ft)
5,981.0	5.70	63.60	5,724.2	418.3	1,444.3	1,503.6	1.62	-1.60	-2.66
6,075.0	4.70	61.80	5,817.8	422.2	1,451.8	1,512.0	1.08	-1.06	-1.91
6,169.0	3.00	75.70	5,911.6	424.7	1,457.6	1,518.2	2.05	-1.81	14.79
6,257.7	0.52	85.94	6,000.3	425.3	1,460.3	1,520.9	2.81	-2.80	11.54
<b>TARGET BHL 660'FSL, 658'FEL</b>									
6,262.0	0.40	89.60	6,004.5	425.3	1,460.3	1,521.0	2.81	-2.73	86.11
6,356.0	0.20	100.70	6,098.5	425.2	1,460.8	1,521.4	0.22	-0.21	11.81
6,450.0	0.10	215.30	6,192.5	425.1	1,460.9	1,521.5	0.27	-0.11	121.92
6,543.0	0.40	248.00	6,285.5	425.0	1,460.6	1,521.1	0.34	0.32	35.16
6,637.0	0.40	239.60	6,379.5	424.7	1,460.0	1,520.5	0.06	0.00	-8.94
6,731.0	0.80	240.40	6,473.5	424.2	1,459.1	1,519.5	0.43	0.43	0.85
6,824.0	0.90	247.60	6,566.5	423.6	1,457.9	1,518.2	0.16	0.11	7.74
6,918.0	1.10	242.00	6,660.5	422.9	1,456.4	1,516.5	0.24	0.21	-5.96
7,012.0	0.40	349.20	6,754.5	422.8	1,455.5	1,515.7	1.36	-0.74	114.04
7,105.0	0.40	235.20	6,847.5	422.9	1,455.2	1,515.4	0.72	0.00	-122.58
7,199.0	0.90	233.90	6,941.5	422.3	1,454.3	1,514.4	0.53	0.53	-1.38
7,268.2	1.19	235.34	7,010.7	421.6	1,453.3	1,513.2	0.43	0.43	2.08
<b>LEGAL BOX 400' X 400' 660'FSL &amp; 658'FEL - TARGET CIRCLE 660'FSL &amp; 658'FEL</b>									
7,293.0	1.30	235.70	7,035.5	421.3	1,452.9	1,512.7	0.43	0.43	1.44
7,387.0	1.20	223.60	7,129.4	419.9	1,451.3	1,510.8	0.30	-0.11	-12.87
7,480.0	1.20	207.20	7,222.4	418.4	1,450.2	1,509.3	0.37	0.00	-17.63
7,574.0	1.40	188.60	7,316.4	416.4	1,449.6	1,508.2	0.49	0.21	-19.79
7,668.0	1.10	195.30	7,410.4	414.3	1,449.2	1,507.2	0.35	-0.32	7.13
7,703.0	1.10	197.70	7,445.4	413.7	1,449.0	1,506.8	0.13	0.00	6.86
7,745.0	1.10	197.70	7,487.4	412.9	1,448.7	1,506.4	0.00	0.00	0.00

Checked By: \_\_\_\_\_ Approved By: \_\_\_\_\_ Date: \_\_\_\_\_