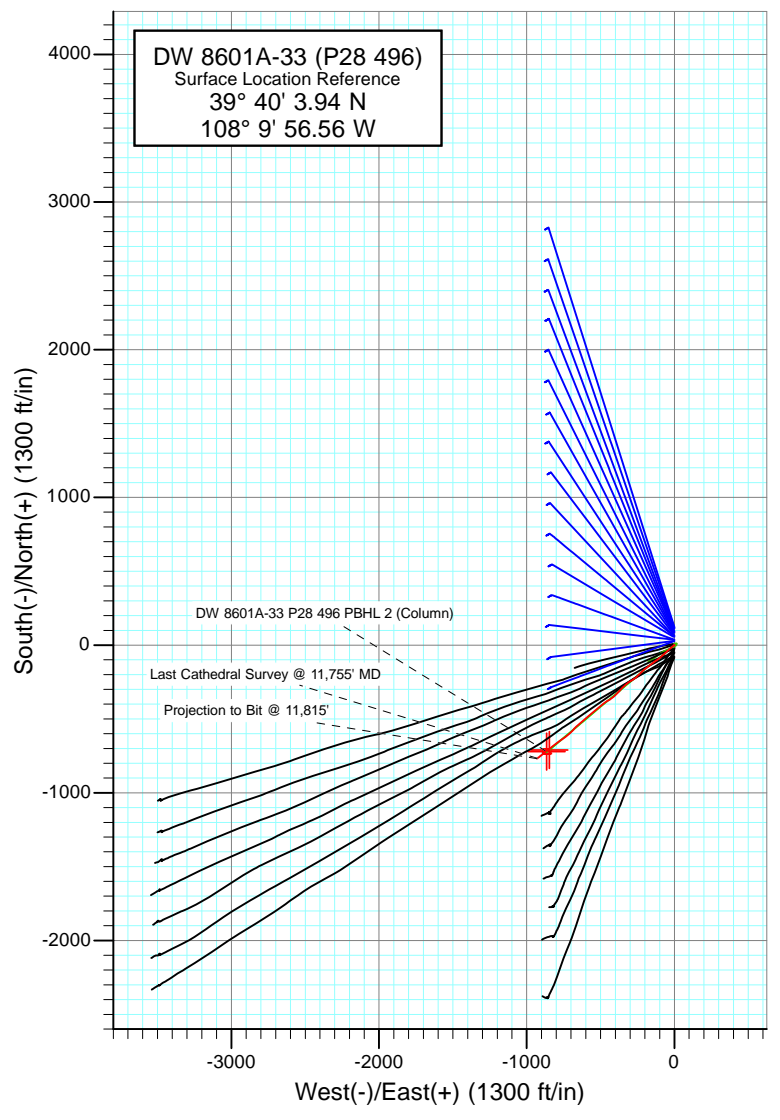
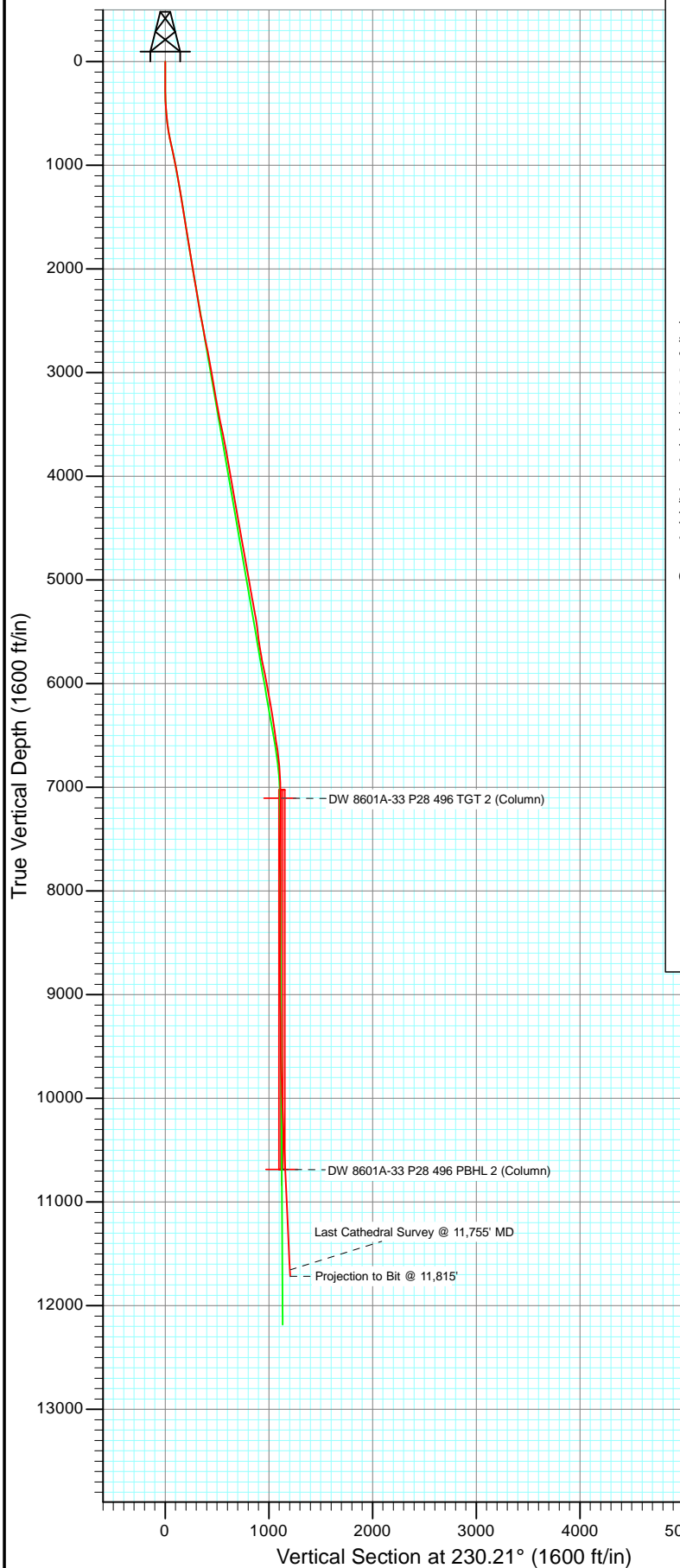




Project: Double Willow  
 Site: S28-T4S-R96W (P28 496)(column pattern)  
 Well: DW 8601A-33 (P28 496)  
 Wellbore: DD  
 Design: FINAL



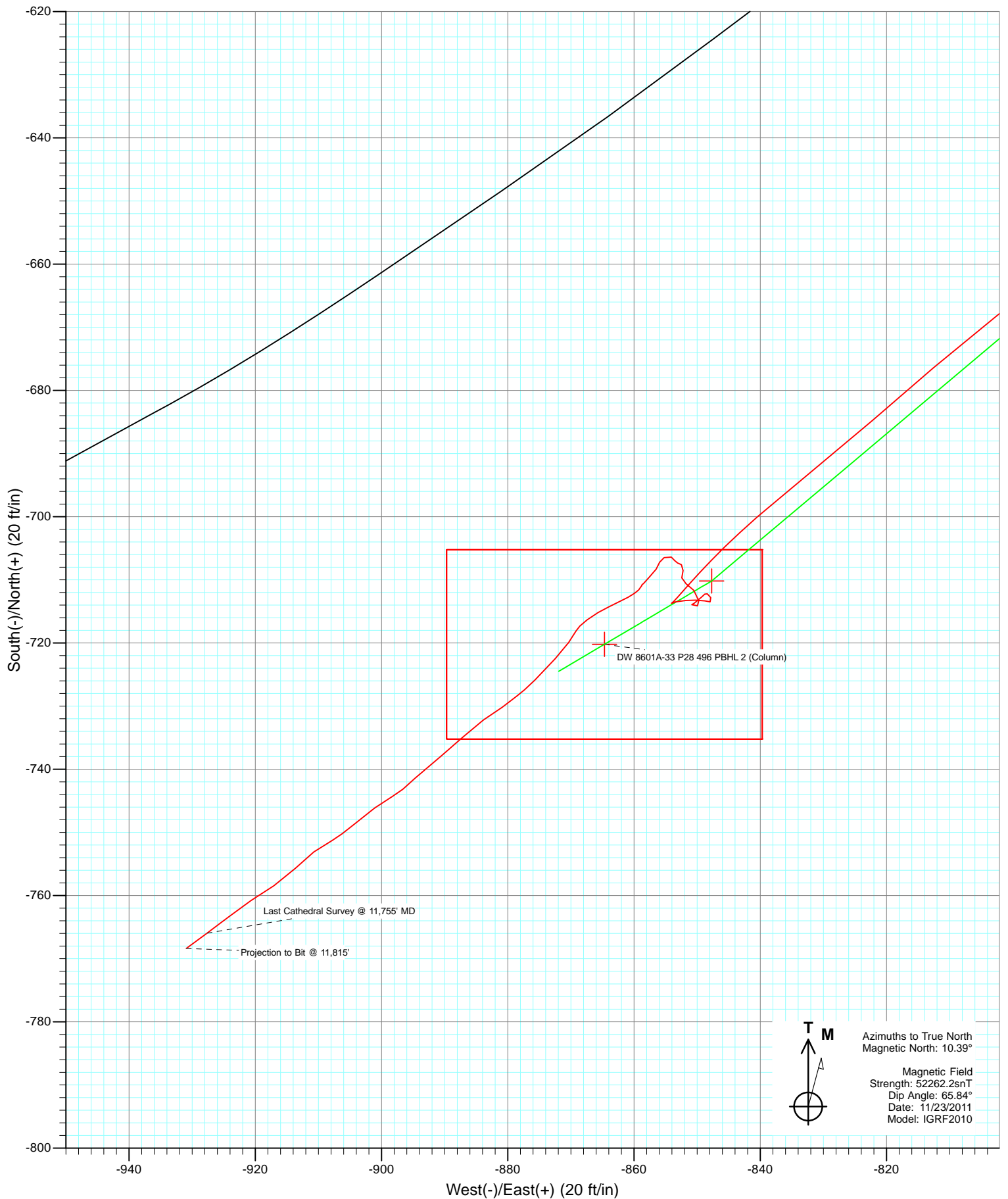
Azimuths to True North  
 Magnetic North: 10.39°

Magnetic Field  
 Strength: 52262.2snT  
 Dip Angle: 65.84°  
 Date: 11/23/2011  
 Model: IGRF2010

DD DW 8601A-33 (P28 496) 115373 (SH); 115539 120855; SC						
KBE @ 7813.0ft (Patterson 308) North American Datum 1983 Well DW 8601A-33 (P28 496), True North						
Type	Target	Azimuth	Origin Type	N/S	E/W	From TVD
Target	DW 8601A-33 P28 496 PBHL (Column)	230.21	Slot	0.0	0.0	0.0
	TVD	+N/-S	+E/-W	Latitude		Longitude
DW 8601A-33 P28 496 TGT 2 (Column)	7106.0	-710.2	-847.7	39° 39' 56.92 N	108° 10' 7.40 W	
DW 8601A-33 P28 496 PBHL 2 (Column)	10686.0	-720.2	-864.7	39° 39' 56.82 N	108° 10' 7.61 W	



Project: Double Willow  
Site: S28-T4S-R96W (P28 496)(column pattern)  
Well: DW 8601A-33 (P28 496)  
Wellbore: DD  
Design: FINAL



# Cathedral Energy Services

## Survey Report

<b>Company:</b>	EnCana Oil & Gas (USA) Inc	<b>Local Co-ordinate Reference:</b>	Well DW 8601A-33 (P28 496)
<b>Project:</b>	Double Willow	<b>TVD Reference:</b>	KBE @ 7813.0ft (Patterson 308)
<b>Site:</b>	S28-T4S-R96W (P28 496)(column pattern)	<b>MD Reference:</b>	KBE @ 7813.0ft (Patterson 308)
<b>Well:</b>	DW 8601A-33 (P28 496)	<b>North Reference:</b>	True
<b>Wellbore:</b>	DD	<b>Survey Calculation Method:</b>	Minimum Curvature
<b>Design:</b>	DD	<b>Database:</b>	USA EDM 5000 Multi Users DB

<b>Project</b>	Double Willow		
<b>Map System:</b>	US State Plane 1983	<b>System Datum:</b>	Mean Sea Level
<b>Geo Datum:</b>	North American Datum 1983		
<b>Map Zone:</b>	Colorado Central Zone		

Site	S28-T4S-R96W (P28 496)(column pattern)				
Site Position:		Northing:	1,679,243.29 ft	Latitude:	39° 40' 5.13 N
From:	Lat/Long	Easting:	2,249,687.54 ft	Longitude:	108° 9' 56.55 W
Position Uncertainty:	0.0 ft	Slot Radius:	13.200 in	Grid Convergence:	-1.68 °

Well	DW 8601A-33 (P28 496)					
Well Position	+N/-S	0.0 ft	Northing:	1,679,123.23 ft	Latitude:	39° 40' 3.94 N
	+E/-W	0.0 ft	Easting:	2,249,683.42 ft	Longitude:	108° 9' 56.56 W
Position Uncertainty		0.0 ft	Wellhead Elevation:	ft	Ground Level:	7,780.0 ft

<b>Wellbore</b>	DD				
<b>Magnetics</b>	<b>Model Name</b>	<b>Sample Date</b>	<b>Declination (°)</b>	<b>Dip Angle (°)</b>	<b>Field Strength (nT)</b>
	IGRF2010	11/23/2011	10.39	65.84	52,262

<b>Design</b>	DD				
<b>Audit Notes:</b>					
<b>Version:</b>	1.0	<b>Phase:</b>	ACTUAL	<b>Tie On Depth:</b>	0.0
<b>Vertical Section:</b>	<b>Depth From (TVD)</b>	<b>+N/-S</b>	<b>+E/-W</b>	<b>Direction</b>	
	(ft)	(ft)	(ft)	(°)	
	0.0	0.0	0.0	230.21	

<b>Survey Program</b>	<b>Date</b>	12/5/2011			
<b>From (ft)</b>	<b>To (ft)</b>	<b>Survey (Wellbore)</b>	<b>Tool Name</b>	<b>Description</b>	
169.0	2,080.0	Survey #1 (DD)	MWD	Geolink MWD	
2,165.0	11,815.0	Survey #2 (DD)	MWD	Geolink MWD	

<b>Survey</b>										
<b>Measured Depth (ft)</b>	<b>Inclination (°)</b>	<b>Azimuth (°)</b>	<b>Vertical Depth (ft)</b>	<b>+N/-S (ft)</b>	<b>+E/-W (ft)</b>	<b>Vertical Section (ft)</b>	<b>Dogleg Rate (°/100ft)</b>	<b>Build Rate (°/100ft)</b>	<b>Formations / Comments</b>	
0.0	0.00	0.00	0.0	0.0	0.0	0.0	0.00	0.00		
169.0	0.30	157.10	169.0	-0.4	0.2	0.1	0.18	0.18		
230.0	0.30	234.90	230.0	-0.6	0.1	0.3	0.62	0.00		
260.0	0.70	227.50	260.0	-0.8	-0.1	0.6	1.35	1.33		
291.0	1.10	262.60	291.0	-1.0	-0.5	1.0	2.14	1.29		
322.0	1.70	232.10	322.0	-1.3	-1.2	1.7	3.02	1.94		
352.0	2.10	239.60	352.0	-1.9	-2.0	2.7	1.57	1.33		
383.0	2.90	239.00	382.9	-2.5	-3.2	4.1	2.58	2.58		
414.0	3.30	229.30	413.9	-3.5	-4.5	5.7	2.12	1.29		
444.0	4.00	233.80	443.8	-4.7	-6.0	7.6	2.52	2.33		
475.0	4.60	239.50	474.7	-6.0	-8.0	9.9	2.37	1.94		
505.0	5.10	230.10	504.6	-7.4	-10.0	12.5	3.12	1.67		

# Cathedral Energy Services

## Survey Report

<b>Company:</b>	EnCana Oil & Gas (USA) Inc	<b>Local Co-ordinate Reference:</b>	Well DW 8601A-33 (P28 496)
<b>Project:</b>	Double Willow	<b>TVD Reference:</b>	KBE @ 7813.0ft (Patterson 308)
<b>Site:</b>	S28-T4S-R96W (P28 496)(column pattern)	<b>MD Reference:</b>	KBE @ 7813.0ft (Patterson 308)
<b>Well:</b>	DW 8601A-33 (P28 496)	<b>North Reference:</b>	True
<b>Wellbore:</b>	DD	<b>Survey Calculation Method:</b>	Minimum Curvature
<b>Design:</b>	DD	<b>Database:</b>	USA EDM 5000 Multi Users DB

Survey									
Measured Depth (ft)	Inclination (°)	Azimuth (°)	Vertical Depth (ft)	+N/-S (ft)	+E/-W (ft)	Vertical Section (ft)	Dogleg Rate (°/100ft)	Build Rate (°/100ft)	Formations / Comments
554.0	5.90	232.30	553.4	-10.4	-13.7	17.2	1.69	1.63	
600.0	6.90	230.80	599.1	-13.6	-17.7	22.3	2.20	2.17	
646.0	8.30	228.20	644.7	-17.5	-22.3	28.4	3.13	3.04	
691.0	10.10	225.50	689.1	-22.5	-27.6	35.6	4.11	4.00	
783.0	12.70	227.40	779.3	-35.0	-40.8	53.7	2.86	2.83	
874.0	12.30	228.80	868.2	-48.1	-55.4	73.4	0.55	-0.44	
966.0	11.30	227.60	958.2	-60.7	-69.4	92.2	1.12	-1.09	
1,057.0	10.50	229.40	1,047.6	-72.1	-82.3	109.4	0.96	-0.88	
1,149.0	10.00	227.20	1,138.1	-82.9	-94.5	125.7	0.69	-0.54	
1,241.0	9.90	233.60	1,228.7	-93.1	-106.8	141.6	1.21	-0.11	
1,332.0	9.60	236.70	1,318.4	-101.9	-119.4	157.0	0.66	-0.33	
1,424.0	8.60	231.70	1,409.3	-110.4	-131.2	171.5	1.38	-1.09	
1,515.0	9.10	232.60	1,499.2	-118.9	-142.3	185.4	0.57	0.55	
1,607.0	9.80	236.10	1,589.9	-127.7	-154.6	200.5	0.98	0.76	
1,698.0	9.30	234.80	1,679.7	-136.3	-167.0	215.5	0.60	-0.55	
1,790.0	8.40	231.10	1,770.6	-144.8	-178.3	229.7	1.16	-0.98	
1,881.0	8.70	231.50	1,860.6	-153.2	-188.9	243.2	0.34	0.33	
1,973.0	9.60	230.00	1,951.4	-162.5	-200.2	257.8	1.01	0.98	
2,080.0	10.00	225.80	2,056.8	-174.7	-213.7	276.0	0.77	0.37	Last Cathedral Survey @ 2,080' MD
2,165.0	8.60	227.30	2,140.7	-184.2	-223.6	289.7	1.67	-1.65	
2,256.0	9.60	227.80	2,230.6	-193.9	-234.3	304.1	1.10	1.10	
2,348.0	10.90	226.00	2,321.1	-205.1	-246.2	320.4	1.46	1.41	
2,439.0	9.20	222.90	2,410.7	-216.4	-257.3	336.2	1.96	-1.87	
2,531.0	11.30	239.80	2,501.2	-226.3	-270.1	352.4	3.96	2.28	
2,622.0	11.10	236.60	2,590.5	-235.6	-285.2	369.9	0.72	-0.22	
2,714.0	10.50	239.70	2,680.9	-244.7	-299.8	387.0	0.91	-0.65	
2,805.0	11.90	230.60	2,770.1	-254.9	-314.2	404.5	2.47	1.54	
2,897.0	11.30	227.70	2,860.3	-267.0	-328.2	423.0	0.91	-0.65	
2,989.0	9.90	228.70	2,950.7	-278.2	-340.8	439.9	1.53	-1.52	
3,080.0	10.40	224.10	3,040.3	-289.3	-352.4	455.9	1.05	0.55	
3,172.0	8.00	222.70	3,131.1	-300.0	-362.5	470.5	2.62	-2.61	
3,263.0	9.70	221.70	3,221.0	-310.4	-371.9	484.4	1.88	1.87	
3,354.0	11.00	224.90	3,310.5	-322.2	-383.1	500.6	1.56	1.43	
3,446.0	10.40	222.90	3,400.9	-334.5	-395.0	517.6	0.77	-0.65	
3,537.0	12.20	234.60	3,490.2	-346.1	-408.4	535.3	3.19	1.98	
3,628.0	11.70	229.10	3,579.2	-357.7	-423.2	554.2	1.37	-0.55	
3,720.0	11.30	238.40	3,669.3	-368.6	-438.0	572.4	2.06	-0.43	
3,811.0	10.60	238.40	3,758.7	-377.6	-452.7	589.5	0.77	-0.77	
3,903.0	10.10	233.20	3,849.2	-386.9	-466.4	605.9	1.15	-0.54	
3,994.0	9.70	232.80	3,938.8	-396.3	-478.9	621.6	0.45	-0.44	
4,086.0	8.90	231.80	4,029.6	-405.4	-490.6	636.4	0.89	-0.87	
4,177.0	10.00	235.20	4,119.4	-414.2	-502.6	651.3	1.36	1.21	
4,269.0	10.50	228.20	4,209.9	-424.4	-515.4	667.7	1.46	0.54	
4,360.0	9.90	228.90	4,299.5	-435.1	-527.5	683.8	0.67	-0.66	
4,452.0	8.80	228.30	4,390.3	-444.9	-538.7	698.7	1.20	-1.20	
4,543.0	11.50	230.00	4,479.8	-455.4	-550.9	714.7	2.98	2.97	
4,635.0	10.80	226.60	4,570.1	-467.2	-564.2	732.5	1.04	-0.76	
4,727.0	10.20	232.00	4,660.6	-478.2	-576.9	749.3	1.25	-0.65	
4,818.0	10.00	230.90	4,750.1	-488.1	-589.3	765.2	0.31	-0.22	
4,910.0	8.80	232.10	4,840.9	-497.5	-601.1	780.2	1.32	-1.30	
5,001.0	10.70	226.60	4,930.6	-507.5	-612.7	795.6	2.32	2.09	
5,093.0	9.80	230.80	5,021.1	-518.4	-625.0	812.0	1.27	-0.98	
5,184.0	9.20	232.50	5,110.9	-527.7	-636.8	827.0	0.73	-0.66	

# Cathedral Energy Services

## Survey Report

<b>Company:</b>	EnCana Oil & Gas (USA) Inc	<b>Local Co-ordinate Reference:</b>	Well DW 8601A-33 (P28 496)
<b>Project:</b>	Double Willow	<b>TVD Reference:</b>	KBE @ 7813.0ft (Patterson 308)
<b>Site:</b>	S28-T4S-R96W (P28 496)(column pattern)	<b>MD Reference:</b>	KBE @ 7813.0ft (Patterson 308)
<b>Well:</b>	DW 8601A-33 (P28 496)	<b>North Reference:</b>	True
<b>Wellbore:</b>	DD	<b>Survey Calculation Method:</b>	Minimum Curvature
<b>Design:</b>	DD	<b>Database:</b>	USA EDM 5000 Multi Users DB

### Survey

Measured Depth (ft)	Inclination (°)	Azimuth (°)	Vertical Depth (ft)	+N/-S (ft)	+E/-W (ft)	Vertical Section (ft)	Dogleg Rate (°/100ft)	Build Rate (°/100ft)	Formations / Comments
5,276.0	11.20	227.70	5,201.4	-538.2	-649.2	843.3	2.36	2.17	
5,367.0	10.40	225.00	5,290.8	-549.9	-661.6	860.3	1.04	-0.88	
5,459.0	9.20	228.30	5,381.5	-560.7	-672.9	875.9	1.44	-1.30	
5,551.0	7.30	218.30	5,472.5	-570.2	-682.0	889.0	2.58	-2.07	
5,642.0	7.30	223.60	5,562.8	-578.9	-689.6	900.4	0.74	0.00	
5,733.0	9.10	222.50	5,652.8	-588.4	-698.5	913.3	1.99	1.98	
5,825.0	10.10	225.50	5,743.6	-599.4	-709.1	928.5	1.22	1.09	
5,916.0	11.90	234.40	5,832.9	-610.5	-722.4	945.8	2.71	1.98	
6,008.0	11.70	236.30	5,922.9	-621.2	-737.9	964.6	0.47	-0.22	
6,100.0	10.80	232.80	6,013.2	-631.6	-752.5	982.4	1.23	-0.98	
6,191.0	10.30	235.20	6,102.6	-641.4	-766.0	999.1	0.73	-0.55	
6,283.0	9.90	233.40	6,193.2	-650.8	-779.1	1,015.2	0.55	-0.43	
6,374.0	9.20	234.20	6,282.9	-659.7	-791.3	1,030.2	0.78	-0.77	
6,466.0	8.10	231.40	6,373.9	-668.0	-802.3	1,044.0	1.28	-1.20	
6,558.0	8.40	229.90	6,464.9	-676.4	-812.5	1,057.2	0.40	0.33	
6,649.0	7.70	228.40	6,555.1	-684.7	-822.2	1,070.0	0.80	-0.77	
6,741.0	7.20	231.80	6,646.3	-692.4	-831.3	1,081.9	0.72	-0.54	
6,833.0	7.60	228.50	6,737.5	-700.0	-840.4	1,093.7	0.63	0.43	
6,924.0	5.10	223.80	6,827.9	-706.9	-847.7	1,103.8	2.80	-2.75	
7,016.0	3.00	220.90	6,919.7	-711.7	-852.1	1,110.2	2.29	-2.28	
7,108.0	0.50	237.60	7,011.7	-713.7	-854.0	1,113.0	2.74	-2.72	
7,199.0	1.40	66.20	7,102.7	-713.5	-853.4	1,112.3	2.08	0.99	
7,290.0	0.80	110.80	7,193.6	-713.2	-851.7	1,110.9	1.10	-0.66	
7,382.0	1.20	74.30	7,285.6	-713.2	-850.2	1,109.7	0.80	0.43	
7,473.0	0.80	125.50	7,376.6	-713.3	-848.8	1,108.7	1.03	-0.44	
7,565.0	0.50	55.30	7,468.6	-713.5	-847.9	1,108.1	0.86	-0.33	
7,657.0	0.60	332.70	7,560.6	-712.8	-847.8	1,107.6	0.79	0.11	
7,748.0	0.50	296.80	7,651.6	-712.2	-848.4	1,107.7	0.39	-0.11	
7,840.0	1.10	217.00	7,743.6	-712.7	-849.3	1,108.7	1.22	0.65	
7,931.0	0.90	247.10	7,834.6	-713.7	-850.5	1,110.3	0.61	-0.22	
8,023.0	0.40	78.90	7,926.6	-713.9	-850.8	1,110.7	1.41	-0.54	
8,114.0	0.80	112.20	8,017.6	-714.1	-849.9	1,110.1	0.57	0.44	
8,205.0	1.40	339.50	8,108.6	-713.3	-849.7	1,109.4	2.23	0.66	
8,297.0	0.90	327.60	8,200.5	-711.6	-850.5	1,109.0	0.60	-0.54	
8,389.0	1.20	295.80	8,292.5	-710.6	-851.8	1,109.3	0.70	0.33	
8,480.0	0.70	21.40	8,383.5	-709.7	-852.4	1,109.2	1.47	-0.55	
8,571.0	0.80	359.60	8,474.5	-708.5	-852.2	1,108.3	0.33	0.11	
8,663.0	0.50	316.30	8,566.5	-707.6	-852.5	1,107.9	0.60	-0.33	
8,754.0	0.40	267.20	8,657.5	-707.3	-853.1	1,108.2	0.42	-0.11	
8,846.0	0.50	341.80	8,749.5	-707.0	-853.5	1,108.3	0.60	0.11	
8,937.0	0.60	293.50	8,840.5	-706.4	-854.1	1,108.4	0.50	0.11	
9,029.0	0.90	248.00	8,932.5	-706.5	-855.2	1,109.3	0.70	0.33	
9,120.0	0.60	186.30	9,023.5	-707.2	-855.9	1,110.3	0.89	-0.33	
9,212.0	1.00	219.30	9,115.5	-708.3	-856.5	1,111.4	0.65	0.43	
9,304.0	1.00	222.20	9,207.5	-709.5	-857.5	1,113.0	0.06	0.00	
9,395.0	0.70	221.20	9,298.5	-710.5	-858.4	1,114.3	0.33	-0.33	
9,487.0	0.20	16.70	9,390.5	-710.8	-858.8	1,114.8	0.96	-0.54	
9,578.0	0.30	190.90	9,481.4	-710.9	-858.8	1,114.8	0.55	0.11	
9,670.0	0.80	224.10	9,573.4	-711.6	-859.2	1,115.6	0.62	0.54	
9,761.0	1.80	240.00	9,664.4	-712.8	-860.9	1,117.7	1.16	1.10	
9,853.0	2.50	246.10	9,756.4	-714.3	-864.0	1,121.0	0.80	0.76	
9,894.0	2.80	238.20	9,797.3	-715.2	-865.7	1,122.9	1.15	0.73	
9,940.0	2.30	233.70	9,843.3	-716.3	-867.4	1,124.9	1.17	-1.09	

# Cathedral Energy Services

## Survey Report

<b>Company:</b>	EnCana Oil & Gas (USA) Inc	<b>Local Co-ordinate Reference:</b>	Well DW 8601A-33 (P28 496)
<b>Project:</b>	Double Willow	<b>TVD Reference:</b>	KBE @ 7813.0ft (Patterson 308)
<b>Site:</b>	S28-T4S-R96W (P28 496)(column pattern)	<b>MD Reference:</b>	KBE @ 7813.0ft (Patterson 308)
<b>Well:</b>	DW 8601A-33 (P28 496)	<b>North Reference:</b>	True
<b>Wellbore:</b>	DD	<b>Survey Calculation Method:</b>	Minimum Curvature
<b>Design:</b>	DD	<b>Database:</b>	USA EDM 5000 Multi Users DB

Survey									
Measured Depth (ft)	Inclination (°)	Azimuth (°)	Vertical Depth (ft)	+N/-S (ft)	+E/-W (ft)	Vertical Section (ft)	Dogleg Rate (°/100ft)	Build Rate (°/100ft)	Formations / Comments
10,031.0	1.00	205.30	9,934.2	-718.1	-869.2	1,127.5	1.65	-1.43	
10,123.0	1.70	216.70	10,026.2	-719.9	-870.3	1,129.5	0.81	0.76	
10,306.0	3.30	224.90	10,209.0	-725.8	-875.7	1,137.4	0.89	0.87	
10,397.0	1.60	235.30	10,299.9	-728.4	-878.6	1,141.3	1.92	-1.87	
10,489.0	2.00	230.50	10,391.9	-730.2	-880.9	1,144.2	0.46	0.43	
10,581.0	2.50	239.90	10,483.8	-732.2	-883.9	1,147.7	0.67	0.54	
10,672.0	2.80	222.00	10,574.7	-734.8	-887.1	1,151.9	0.96	0.33	
10,764.0	3.00	235.00	10,666.6	-737.9	-890.5	1,156.5	0.75	0.22	
10,855.0	3.80	225.60	10,757.4	-741.4	-894.6	1,161.9	1.07	0.88	
10,947.0	2.00	241.60	10,849.3	-744.3	-898.2	1,166.5	2.13	-1.96	
11,038.0	2.30	232.60	10,940.3	-746.1	-901.1	1,169.9	0.50	0.33	
11,130.0	3.10	230.50	11,032.2	-748.8	-904.5	1,174.2	0.88	0.87	
11,221.0	2.10	239.60	11,123.1	-751.2	-907.8	1,178.3	1.19	-1.10	
11,313.0	2.20	235.60	11,215.0	-753.1	-910.7	1,181.7	0.20	0.11	
11,405.0	2.70	223.00	11,306.9	-755.7	-913.6	1,185.7	0.80	0.54	
11,496.0	2.90	238.30	11,397.8	-758.5	-917.1	1,190.1	0.85	0.22	
11,588.0	2.40	235.90	11,489.7	-760.8	-920.6	1,194.3	0.56	-0.54	
11,680.0	2.90	232.30	11,581.6	-763.3	-924.1	1,198.5	0.57	0.54	
11,755.0	3.90	233.50	11,656.5	-765.9	-927.6	1,203.0	1.34	1.33	Last Cathedral Survey @ 11,755' MD Projection to Bit @ 11,815'
11,815.0	3.90	233.50	11,716.3	-768.4	-930.9	1,207.0	0.00	0.00	

Targets									
Target Name	Dip Angle (°)	Dip Dir. (°)	TVD (ft)	+N/-S (ft)	+E/-W (ft)	Northing (ft)	Easting (ft)	Latitude	Longitude
DW 8601A-33 P28 496 - - hit/miss target - Shape	0.00	0.00	7,033.0	-710.2	-847.7	1,678,438.22	2,248,815.25	39° 39' 56.92 N	108° 10' 7.40 W
- actual wellpath misses target center by 7.4ft at 7129.4ft MD (7033.1 TVD, -713.8 N, -854.1 E)									
- Point									
DW 8601A-33 P28 496 I	0.00	0.00	10,693.0	-720.2	-864.7	1,678,428.70	2,248,797.98	39° 39' 56.82 N	108° 10' 7.61 W
- actual wellpath misses target center by 32.7ft at 10788.5ft MD (10691.1 TVD, -738.7 N, -891.6 E)									
- Rectangle (sides W30.0 H50.0 D0.0)									
DW 8601A-33 P28 496 -	0.00	0.00	7,106.0	-710.2	-847.7	1,678,438.22	2,248,815.25	39° 39' 56.92 N	108° 10' 7.40 W
- actual wellpath misses target center by 6.5ft at 7202.5ft MD (7106.1 TVD, -713.4 N, -853.3 E)									
- Point									
DW 8601A-33 P28 496 I	0.00	0.00	10,686.0	-720.2	-864.7	1,678,428.70	2,248,797.98	39° 39' 56.82 N	108° 10' 7.61 W
- actual wellpath misses target center by 32.3ft at 10781.5ft MD (10684.1 TVD, -738.5 N, -891.3 E)									
- Rectangle (sides W30.0 H50.0 D0.0)									

Design Annotations					
Measured Depth (ft)	Vertical Depth (ft)	Local Coordinates			
		+N/-S (ft)	+E/-W (ft)	Comment	
2,080.0	2,056.8	-174.7	-213.7	Last Cathedral Survey @ 2,080' MD	
11,755.0	11,656.5	-765.9	-927.6	Last Cathedral Survey @ 11,755' MD	
11,815.0	11,716.3	-768.4	-930.9	Projection to Bit @ 11,815'	

Checked By: \_\_\_\_\_ Approved By: \_\_\_\_\_ Date: \_\_\_\_\_