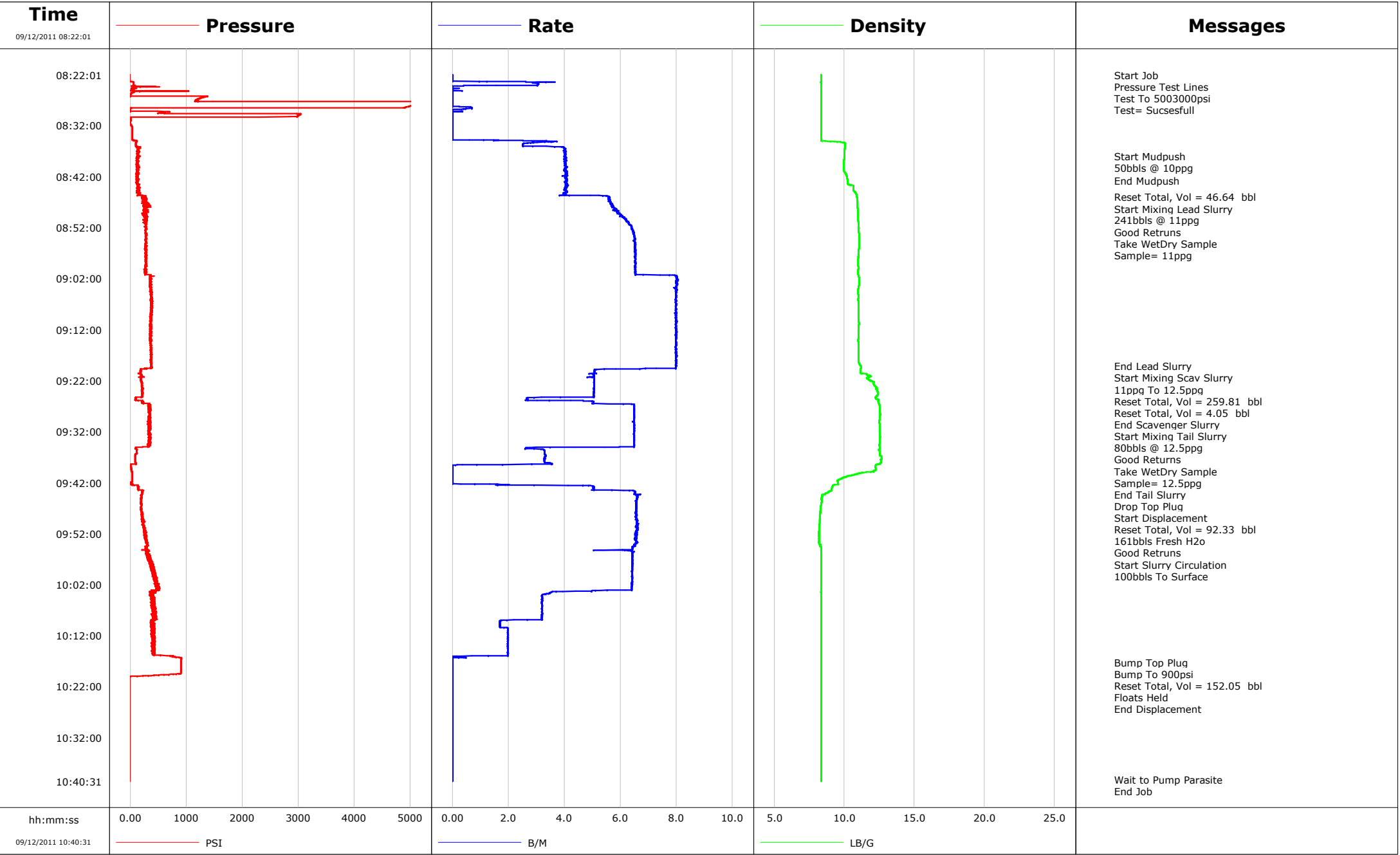


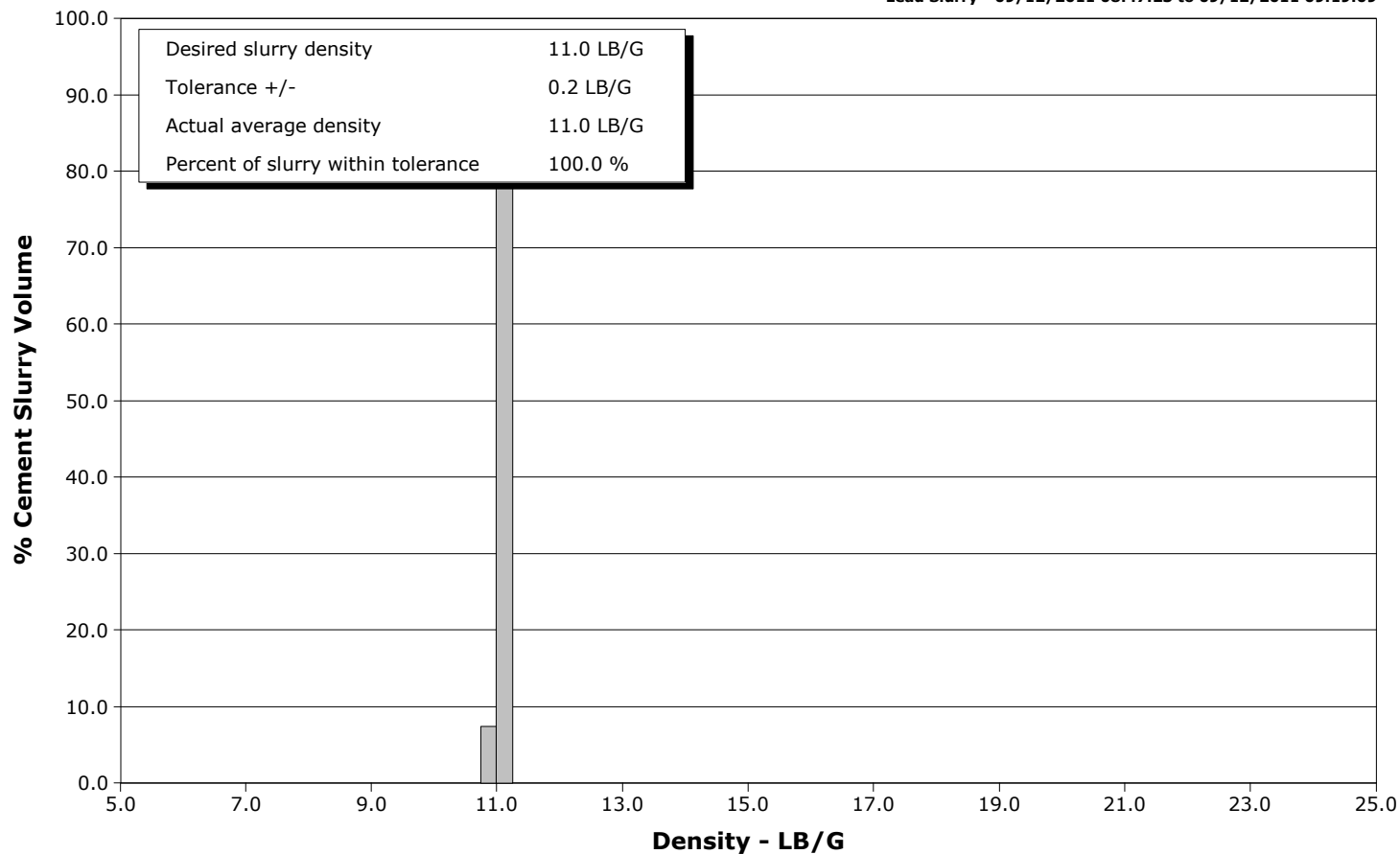
Well	DW 8601A-33	Client	ENCANA
Field	N PARACHUTE	SIR No.	BUNM-00117
Engineer	JASON CRICK	Job Type	SURFACE
Country	United States	Job Date	09-12-2011



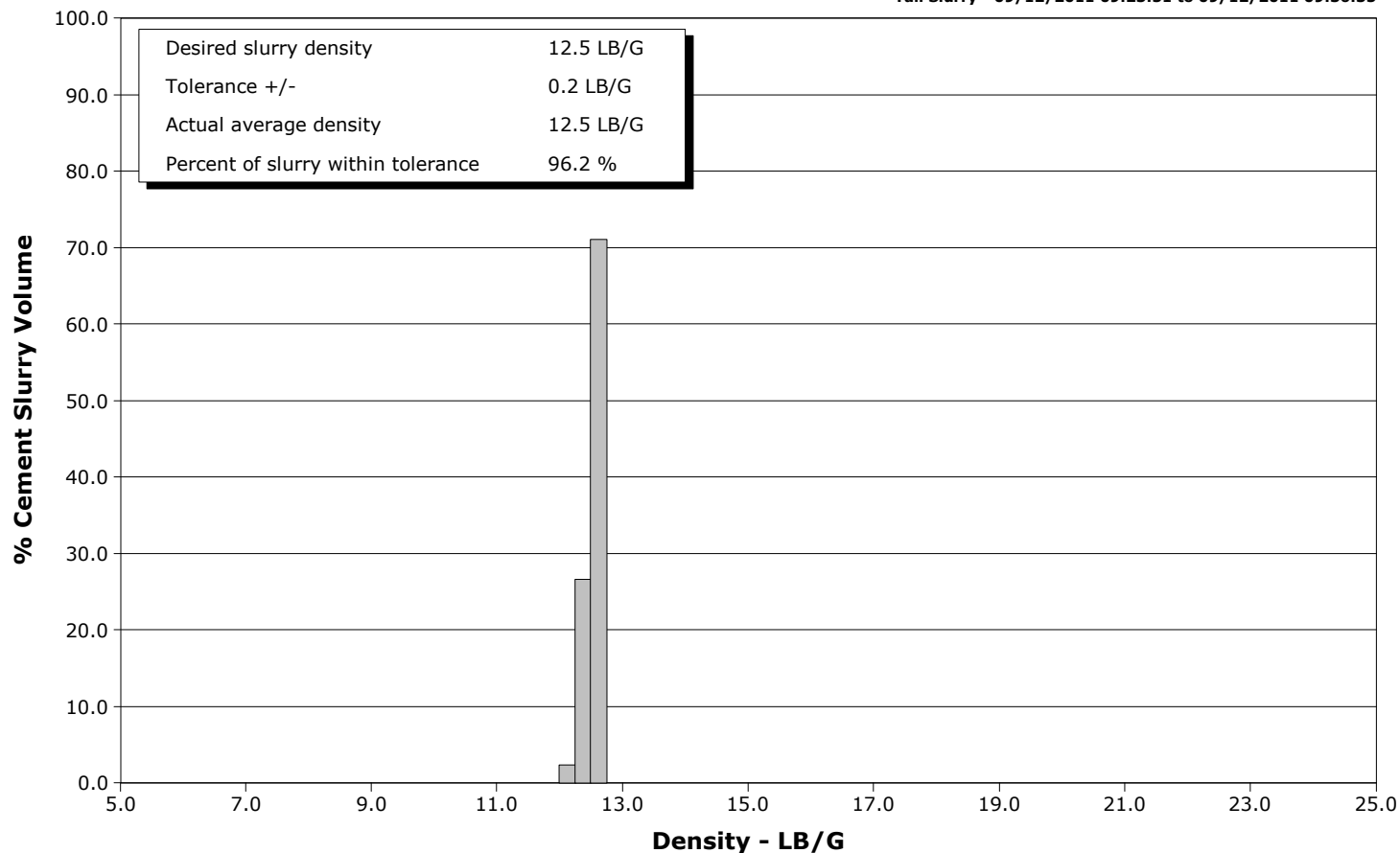
Well DW 8601A-33
Field N PARACHUTE
Engineer JASON CRICK
Country United States

Client ENCANA
SIR No. BUNM-00117
Job Type SURFACE
Job Date 09-12-2011

Lead Slurry - 09/12/2011 08:47:23 to 09/12/2011 09:19:09



Tail Slurry - 09/12/2011 09:23:51 to 09/12/2011 09:36:35



				Customer ENCANA				Job Number BUNM-00117			
Well DW 8601A-33			Location (legal) N PARACHUTE			Schlumberger Location GCO			Job Start Sep/12/2011		
Field N PARACHUTE		Formation Name/Type		Deviation deg		Bit Size in		Well MD ft		Well TVD ft	
County GARFILED		State/Province CO		BHP psi		BHST degF		BHCT degF		Pore Press. Gradient lb/gal	
Well Master		API/UWI									
Rig Name		Drilled For Gas		Service Via Land		Casing/Liner					
						Depth, ft		Size, in		Weight, lb/ft	
Offshore Zone		Well Class New		Well Type Development		2131.0		9.6		36.0	
						0.0		0.0		0.0	
Drilling Fluid Type Bentonite		Max. Density lb/gal		Plastic Viscosity cP		Tubing/Drill Pipe					
						T/D		Depth, ft		Size, in	
Service Line Cementing		Job Type SURFACE									
Max. Allowed Tub. Press psi		Max. Allowed Ann. Press psi		WH Connection		Perforations/Open Hole					
						Top, ft		Bottom, ft		shot/ft	
										No. of Shots	
										Total Interval ft	
										Diameter in	
						Treat Down Casing		Displacement 161.0 bbl		Packer Type	
										Packer Depth ft	
						Tubing Vol. bbl		Casing Vol. 164.0 bbl		Annular Vol. 259.0 bbl	
										Openhole Vol. 423.0 bbl	
Casing/Tubing Secured <input checked="" type="checkbox"/>		1 Hole Vol. Circulated prior to Cement <input checked="" type="checkbox"/>		Casing Tools				Squeeze Job			
Lift Pressure 1054 psi				Shoe Type Guide				Squeeze Type			
Pipe Rotated <input type="checkbox"/>		Pipe Reciprocated <input type="checkbox"/>		Shoe Depth 2131.0 ft				Tool Type			
No. Centralizers		Top Plugs		Bottom Plugs		Stage Tool Type				Tool Depth ft	
Cement Head Type						Stage Tool Depth ft				Tail Pipe Size in	
Job Scheduled For Sep/12/2011		Arrived on Location Sep/12/2011		Leave Location Sep/12/2011		Collar Type Diff-Fill				Tail Pipe Depth ft	
						Collar Depth 2084.0 ft				Sqz. Total Vol. bbl	
Date	Time 24-hr clock	Treating Pressure PSI	Flow Rate B/M	Density LB/G	Volume BBL	Message					
09/12/2011	08:22:01	-1	0.0	8.36	0.0	Started Acquisition					
09/12/2011	08:22:02	-1	0.0	8.36	0.0	Start Job					
09/12/2011	08:22:07	-1	0.0	8.36	0.0	Pressure Test Lines					
09/12/2011	08:22:08	-2	0.0	8.36	0.0	Test To 5003000psi					
09/12/2011	08:22:31	-1	0.0	8.36	0.0						
09/12/2011	08:23:01	-4	0.0	8.36	0.0						
09/12/2011	08:23:31	66	3.1	8.32	0.4						
09/12/2011	08:24:01	60	3.1	8.36	1.9						
09/12/2011	08:24:31	62	0.0	8.36	2.4						
09/12/2011	08:25:01	23	0.0	8.36	2.4						
09/12/2011	08:25:31	41	0.0	8.36	2.4						
09/12/2011	08:26:01	8	0.0	8.36	2.4						
09/12/2011	08:26:31	1273	0.0	8.36	2.4						
09/12/2011	08:27:01	1172	0.0	8.36	2.4						
09/12/2011	08:27:31	5527	0.0	8.36	2.4						
09/12/2011	08:28:01	5089	0.0	8.36	2.4						
09/12/2011	08:28:31	27	0.7	8.36	2.5						
09/12/2011	08:29:01	2	0.0	8.36	2.7						
09/12/2011	08:29:31	533	0.0	8.36	2.7						
09/12/2011	08:30:01	3000	0.0	8.36	2.7						
09/12/2011	08:30:31	14	0.0	8.36	2.7						

Well			Field		Job Start	Customer		Job Number
DW 8601A-33			N PARACHUTE		Sep/12/2011	ENCANA		BUNM-00117
Date	Time 24-hr clock	Treating Pressure PSI	Flow Rate B/M	Density LB/G	Volume BBL	Message		
09/12/2011	08:31:31	5	0.0	8.36	2.7			
09/12/2011	08:32:01	34	0.0	8.36	2.7			
09/12/2011	08:32:31	37	0.0	8.36	2.7			
09/12/2011	08:33:01	39	0.0	8.36	2.7			
09/12/2011	08:33:31	41	0.0	8.36	2.7			
09/12/2011	08:34:01	42	0.0	8.36	2.7			
09/12/2011	08:34:31	41	0.0	8.36	2.7			
09/12/2011	08:35:01	119	3.4	8.46	3.1			
09/12/2011	08:35:31	98	2.6	10.07	4.6			
09/12/2011	08:36:01	96	2.5	10.06	5.9			
09/12/2011	08:36:31	159	4.0	10.04	7.7			
09/12/2011	08:37:01	120	4.0	10.03	9.7			
09/12/2011	08:37:31	142	4.0	10.02	11.7			
09/12/2011	08:37:59	175	4.0	10.01	13.6	Start Mudpush		
09/12/2011	08:38:00	175	4.0	10.01	13.7	50bbls @ 10ppg		
09/12/2011	08:38:01	130	4.0	10.01	13.7			
09/12/2011	08:38:31	126	4.0	10.00	15.8			
09/12/2011	08:39:01	142	4.0	9.99	17.8			
09/12/2011	08:39:31	134	4.0	9.99	19.8			
09/12/2011	08:40:01	123	4.0	9.99	21.8			
09/12/2011	08:40:31	124	4.0	9.99	23.8			
09/12/2011	08:41:01	122	4.0	10.00	25.9			
09/12/2011	08:41:31	146	4.1	10.13	27.9			
09/12/2011	08:42:01	111	4.1	10.19	29.9			
09/12/2011	08:42:31	142	4.1	10.24	31.9			
09/12/2011	08:42:50	136	4.1	10.25	33.2	End Mudpush		
09/12/2011	08:43:01	122	4.0	10.24	34.0			
09/12/2011	08:43:31	144	4.0	10.31	36.0			
09/12/2011	08:44:01	129	4.0	10.64	38.0			
09/12/2011	08:44:31	146	4.0	10.68	40.1			
09/12/2011	08:45:01	146	4.1	10.76	42.1			
09/12/2011	08:45:31	143	4.0	10.87	44.1			
09/12/2011	08:46:01	284	5.6	10.90	46.5			
09/12/2011	08:46:02	284	5.6	10.90	46.6	Reset Total, Vol = 46.64 bbl		
09/12/2011	08:46:31	281	5.6	10.93	49.3			
09/12/2011	08:47:01	235	5.7	10.94	52.2			
09/12/2011	08:47:23	249	5.7	10.95	54.2	Start Mixing Lead Slurry		
09/12/2011	08:47:24	249	5.7	10.95	54.3	241bbls @ 11ppg		
09/12/2011	08:47:25	266	5.7	10.95	54.4	Sample= 11ppg		
09/12/2011	08:47:31	257	5.7	10.95	55.0			
09/12/2011	08:48:01	309	5.7	10.96	57.9			
09/12/2011	08:48:31	276	5.8	10.98	60.8			
09/12/2011	08:49:01	255	5.9	10.98	63.7			
09/12/2011	08:49:31	291	6.0	11.00	66.7			
09/12/2011	08:50:01	280	6.1	11.00	69.7			
09/12/2011	08:50:31	296	6.2	11.00	72.8			
09/12/2011	08:51:01	287	6.3	11.02	75.9			
09/12/2011	08:51:31	283	6.4	11.03	79.1			
09/12/2011	08:52:01	282	6.4	11.04	82.2			
09/12/2011	08:52:31	283	6.4	11.04	85.5			
09/12/2011	08:53:01	283	6.5	11.05	88.7			
09/12/2011	08:53:31	305	6.5	11.05	91.9			
09/12/2011	08:54:01	275	6.5	11.06	95.2			
09/12/2011	08:54:31	268	6.5	11.07	98.4			

Well			Field		Job Start	Customer		Job Number
DW 8601A-33			N PARACHUTE		Sep/12/2011	ENCANA		BUNM-00117
Date	Time 24-hr clock	Treating Pressure PSI	Flow Rate B/M	Density LB/G	Volume BBL	Message		
09/12/2011	08:55:31	273	6.5	11.06	105.0			
09/12/2011	08:56:01	279	6.5	11.05	108.2			
09/12/2011	08:56:31	272	6.5	11.03	111.5			
09/12/2011	08:57:01	264	6.5	11.03	114.8			
09/12/2011	08:57:31	294	6.5	11.02	118.0			
09/12/2011	08:58:01	296	6.5	11.01	121.3			
09/12/2011	08:58:31	274	6.5	11.00	124.6			
09/12/2011	08:59:01	286	6.5	11.00	127.8			
09/12/2011	08:59:31	296	6.5	11.00	131.1			
09/12/2011	09:00:01	264	6.5	11.01	134.4			
09/12/2011	09:00:31	268	6.5	11.00	137.6			
09/12/2011	09:01:01	280	6.5	11.00	140.9			
09/12/2011	09:01:31	379	8.0	11.04	144.5			
09/12/2011	09:02:01	348	8.0	11.05	148.5			
09/12/2011	09:02:31	372	8.0	11.06	152.5			
09/12/2011	09:03:01	364	8.0	11.06	156.5			
09/12/2011	09:03:31	347	8.0	11.03	160.5			
09/12/2011	09:04:01	357	8.0	11.00	164.5			
09/12/2011	09:04:31	385	8.0	11.00	168.5			
09/12/2011	09:05:01	367	8.0	11.00	172.5			
09/12/2011	09:05:31	366	8.0	11.01	176.5			
09/12/2011	09:06:01	361	8.0	11.00	180.5			
09/12/2011	09:06:31	389	8.0	11.01	184.5			
09/12/2011	09:07:01	390	8.0	11.03	188.4			
09/12/2011	09:07:31	380	8.0	11.04	192.4			
09/12/2011	09:08:01	368	8.0	11.04	196.4			
09/12/2011	09:08:31	391	8.0	11.03	200.4			
09/12/2011	09:09:01	371	8.0	11.02	204.4			
09/12/2011	09:09:31	359	8.0	11.03	208.4			
09/12/2011	09:10:01	374	8.0	11.03	212.4			
09/12/2011	09:10:31	361	8.0	11.04	216.4			
09/12/2011	09:11:01	379	8.0	11.04	220.4			
09/12/2011	09:11:31	365	8.0	11.04	224.4			
09/12/2011	09:12:01	363	8.0	11.03	228.4			
09/12/2011	09:12:31	365	8.0	11.03	232.4			
09/12/2011	09:13:01	373	8.0	11.03	236.4			
09/12/2011	09:13:31	360	8.0	11.02	240.3			
09/12/2011	09:14:01	366	8.0	11.00	244.3			
09/12/2011	09:14:31	370	8.0	11.01	248.3			
09/12/2011	09:15:01	365	8.0	11.02	252.3			
09/12/2011	09:15:31	358	8.0	11.03	256.3			
09/12/2011	09:16:01	386	8.0	11.03	260.3			
09/12/2011	09:16:31	364	8.0	11.02	264.3			
09/12/2011	09:17:01	371	8.0	11.03	268.3			
09/12/2011	09:17:31	376	8.0	11.02	272.3			
09/12/2011	09:18:01	367	8.0	11.02	276.3			
09/12/2011	09:18:31	387	8.0	11.05	280.3			
09/12/2011	09:19:01	374	8.0	11.15	284.3			
09/12/2011	09:19:09	378	8.0	11.18	285.3	End Lead Slurry		
09/12/2011	09:19:11	387	8.0	11.19	285.6	Start Mixing Scav Slurry		
09/12/2011	09:19:12	376	8.0	11.19	285.7	11ppg To 12.5ppg		
09/12/2011	09:19:31	380	8.0	11.18	288.3			
09/12/2011	09:20:01	194	5.1	11.17	291.4			
09/12/2011	09:20:31	183	5.1	11.18	293.9			

Well			Field		Job Start		Customer		Job Number	
DW 8601A-33			N PARACHUTE		Sep/12/2011		ENCANA		BUNM-00117	
Date	Time 24-hr clock	Treating Pressure PSI	Flow Rate B/M	Density LB/G	Volume BBL	Message				
09/12/2011	09:21:31	193	5.1	11.62	298.9					
09/12/2011	09:22:01	185	5.1	11.87	301.5					
09/12/2011	09:22:31	214	5.1	12.09	304.0					
09/12/2011	09:23:00	212	5.1	12.19	306.4	Reset Total, Vol = 259.81 bbl				
09/12/2011	09:23:01	209	5.1	12.19	306.5					
09/12/2011	09:23:31	220	5.0	12.32	309.1					
09/12/2011	09:23:48	229	5.1	12.33	310.5	Reset Total, Vol = 4.05 bbl				
09/12/2011	09:23:49	207	5.1	12.33	310.6	End Scavenger Slurry				
09/12/2011	09:23:51	208	5.1	12.33	310.7	Start Mixing Tail Slurry				
09/12/2011	09:23:52	208	5.1	12.33	310.8	80bbls @ 12.5ppg				
09/12/2011	09:24:01	220	5.1	12.34	311.6					
09/12/2011	09:24:31	231	5.1	12.42	314.1					
09/12/2011	09:25:01	216	5.1	12.31	316.6					
09/12/2011	09:25:31	105	2.7	12.26	318.6					
09/12/2011	09:26:01	220	5.0	12.42	320.1					
09/12/2011	09:26:31	216	5.0	12.49	322.6					
09/12/2011	09:27:01	359	6.5	12.51	325.8					
09/12/2011	09:27:31	350	6.5	12.52	329.1					
09/12/2011	09:28:01	358	6.5	12.55	332.3					
09/12/2011	09:28:31	356	6.5	12.57	335.6					
09/12/2011	09:29:01	352	6.5	12.53	338.8					
09/12/2011	09:29:31	334	6.5	12.51	342.1					
09/12/2011	09:30:01	323	6.4	12.49	345.3					
09/12/2011	09:30:31	343	6.5	12.51	348.5					
09/12/2011	09:31:01	356	6.5	12.53	351.8					
09/12/2011	09:31:31	328	6.5	12.52	355.0					
09/12/2011	09:32:01	333	6.5	12.51	358.3					
09/12/2011	09:32:31	351	6.5	12.54	361.5					
09/12/2011	09:33:01	334	6.5	12.57	364.8					
09/12/2011	09:33:31	360	6.5	12.56	368.0					
09/12/2011	09:34:01	358	6.5	12.53	371.3					
09/12/2011	09:34:31	344	6.5	12.50	374.5					
09/12/2011	09:35:01	223	6.0	12.51	377.8					
09/12/2011	09:35:31	121	3.3	12.47	379.3					
09/12/2011	09:36:01	121	3.3	12.52	381.0					
09/12/2011	09:36:31	92	3.3	12.52	382.6					
09/12/2011	09:36:35	91	3.3	12.52	382.9	End Tail Slurry				
09/12/2011	09:36:36	91	3.3	12.52	382.9	Drop Top Plug				
09/12/2011	09:37:01	92	3.3	12.67	384.3					
09/12/2011	09:37:31	91	3.3	12.60	386.0					
09/12/2011	09:38:01	90	3.3	12.61	387.6					
09/12/2011	09:38:31	4	0.9	12.27	389.2					
09/12/2011	09:39:01	21	0.0	12.22	389.2					
09/12/2011	09:39:31	25	0.0	12.25	389.2					
09/12/2011	09:40:01	37	0.0	11.33	389.2					
09/12/2011	09:40:31	37	0.0	10.60	389.2					
09/12/2011	09:41:01	37	0.0	9.94	389.2					
09/12/2011	09:41:31	39	0.0	9.56	389.2					
09/12/2011	09:42:01	5	0.0	9.56	389.2					
09/12/2011	09:42:31	70	1.6	9.21	389.6					
09/12/2011	09:43:01	144	5.0	9.13	392.0					
09/12/2011	09:43:31	212	6.1	9.10	394.5					
09/12/2011	09:44:01	218	6.5	8.77	397.8					
09/12/2011	09:44:31	202	6.6	8.40	401.1					

Well			Field		Job Start		Customer		Job Number	
DW 8601A-33			N PARACHUTE		Sep/12/2011		ENCANA		BUNM-00117	
Date	Time 24-hr clock	Treating Pressure PSI	Flow Rate B/M	Density LB/G	Volume BBL	Message				
09/12/2011	09:44:47	207	6.6	8.43	402.8	Reset Total, Vol = 92.33 bbl				
09/12/2011	09:44:49	204	6.6	8.42	403.0	161bbbls Fresh H2o				
09/12/2011	09:45:01	198	6.6	8.36	404.4					
09/12/2011	09:45:31	204	6.6	8.38	407.7					
09/12/2011	09:46:01	200	6.6	8.36	410.9					
09/12/2011	09:46:31	200	6.6	8.34	414.2					
09/12/2011	09:47:01	207	6.6	8.31	417.5					
09/12/2011	09:47:31	202	6.6	8.31	420.8					
09/12/2011	09:48:01	214	6.6	8.29	424.1					
09/12/2011	09:48:31	214	6.6	8.27	427.4					
09/12/2011	09:49:01	228	6.6	8.26	430.6					
09/12/2011	09:49:31	218	6.6	8.24	433.9					
09/12/2011	09:50:01	233	6.6	8.25	437.2					
09/12/2011	09:50:31	259	6.6	8.21	440.5					
09/12/2011	09:51:01	271	6.6	8.20	443.8					
09/12/2011	09:51:31	251	6.5	8.21	447.1					
09/12/2011	09:52:01	274	6.6	8.22	450.4					
09/12/2011	09:52:31	266	6.6	8.19	453.7					
09/12/2011	09:52:37	285	6.6	8.21	454.3	Start Slurry Circulation				
09/12/2011	09:52:39	296	6.5	8.21	454.6	100bbbls To Surface				
09/12/2011	09:53:01	290	6.6	8.19	457.0					
09/12/2011	09:53:31	274	6.6	8.19	460.2					
09/12/2011	09:54:01	314	6.6	8.22	463.5					
09/12/2011	09:54:31	288	6.5	8.29	466.8					
09/12/2011	09:55:01	281	6.4	8.36	470.0					
09/12/2011	09:55:31	323	6.4	8.36	473.1					
09/12/2011	09:56:01	296	6.4	8.36	476.3					
09/12/2011	09:56:31	296	6.4	8.36	479.5					
09/12/2011	09:57:01	314	6.4	8.36	482.8					
09/12/2011	09:57:31	338	6.4	8.36	486.0					
09/12/2011	09:58:01	358	6.4	8.36	489.2					
09/12/2011	09:58:31	359	6.4	8.36	492.4					
09/12/2011	09:59:01	379	6.4	8.36	495.6					
09/12/2011	09:59:31	385	6.4	8.36	498.8					
09/12/2011	10:00:01	416	6.4	8.36	502.0					
09/12/2011	10:00:31	422	6.4	8.36	505.2					
09/12/2011	10:01:01	455	6.4	8.36	508.4					
09/12/2011	10:01:31	465	6.4	8.36	511.6					
09/12/2011	10:02:01	447	6.4	8.36	514.8					
09/12/2011	10:02:31	520	6.4	8.36	518.1					
09/12/2011	10:03:01	466	6.4	8.36	521.3					
09/12/2011	10:03:31	383	3.5	8.33	523.7					
09/12/2011	10:04:01	391	3.2	8.36	525.4					
09/12/2011	10:04:31	373	3.2	8.36	527.0					
09/12/2011	10:05:01	437	3.2	8.36	528.6					
09/12/2011	10:05:31	410	3.2	8.36	530.2					
09/12/2011	10:06:01	407	3.2	8.36	531.8					
09/12/2011	10:06:31	422	3.2	8.36	533.4					
09/12/2011	10:07:01	421	3.2	8.36	535.0					
09/12/2011	10:07:31	456	3.2	8.36	536.6					
09/12/2011	10:08:01	390	3.2	8.36	538.2					
09/12/2011	10:08:31	407	3.2	8.36	539.8					
09/12/2011	10:09:01	390	1.8	8.36	541.3					
09/12/2011	10:09:31	407	1.7	8.36	542.1					

Well			Field		Job Start		Customer		Job Number	
DW 8601A-33			N PARACHUTE		Sep/12/2011		ENCANA		BUNM-00117	
Date	Time 24-hr clock	Treating Pressure PSI		Flow Rate B/M	Density LB/G		Volume BBL		Message	
09/12/2011	10:10:31	405		2.0	8.36		543.9			
09/12/2011	10:11:01	433		2.0	8.36		544.9			
09/12/2011	10:11:31	380		2.0	8.36		545.9			
09/12/2011	10:12:01	399		2.0	8.36		546.8			
09/12/2011	10:12:31	430		2.0	8.36		547.8			
09/12/2011	10:13:01	396		2.0	8.36		548.8			
09/12/2011	10:13:31	440		2.0	8.36		549.8			
09/12/2011	10:14:01	425		2.0	8.36		550.8			
09/12/2011	10:14:31	437		2.0	8.36		551.8			
09/12/2011	10:15:01	434		2.0	8.36		552.8			
09/12/2011	10:15:31	407		2.0	8.36		553.8			
09/12/2011	10:16:01	771		0.7	8.36		554.7			
09/12/2011	10:16:31	913		0.0	8.36		554.9			
09/12/2011	10:17:01	907		0.0	8.36		554.9			
09/12/2011	10:17:11	907		0.0	8.36		554.9		Bump Top Plug	
09/12/2011	10:17:12	906		0.0	8.36		554.9		Bump To 900psi	
09/12/2011	10:17:31	906		0.0	8.36		554.9			
09/12/2011	10:18:01	904		0.0	8.36		554.9			
09/12/2011	10:18:31	904		0.0	8.36		554.9			
09/12/2011	10:19:01	904		0.0	8.36		554.9			
09/12/2011	10:19:31	869		0.0	8.36		554.9			
09/12/2011	10:20:01	13		0.0	8.36		554.9			
09/12/2011	10:20:31	-3		0.0	8.36		554.9			
09/12/2011	10:20:58	-2		0.0	8.36		554.9		Reset Total, Vol = 152.05 bbl	
09/12/2011	10:21:00	-2		0.0	8.36		554.9		Floats Held	
09/12/2011	10:21:01	-2		0.0	8.36		554.9			
09/12/2011	10:21:29	-2		0.0	8.36		554.9		End Displacement	
09/12/2011	10:21:31	-2		0.0	8.36		554.9			
09/12/2011	10:22:01	-2		0.0	8.36		554.9			
09/12/2011	10:22:31	-2		0.0	8.36		554.9			
09/12/2011	10:23:01	-2		0.0	8.36		554.9			
09/12/2011	10:23:31	-2		0.0	8.36		554.9			
09/12/2011	10:24:01	-2		0.0	8.36		554.9			
09/12/2011	10:24:31	-2		0.0	8.36		554.9			
09/12/2011	10:25:01	-2		0.0	8.36		554.9			
09/12/2011	10:25:31	-2		0.0	8.36		554.9			
09/12/2011	10:26:01	-2		0.0	8.36		554.9			
09/12/2011	10:26:31	-2		0.0	8.36		554.9			
09/12/2011	10:27:01	-2		0.0	8.36		554.9			
09/12/2011	10:27:31	-2		0.0	8.36		554.9			
09/12/2011	10:28:01	-2		0.0	8.36		554.9			
09/12/2011	10:28:31	-2		0.0	8.36		554.9			
09/12/2011	10:29:01	-2		0.0	8.36		554.9			
09/12/2011	10:29:31	-2		0.0	8.36		554.9			
09/12/2011	10:30:01	-2		0.0	8.36		554.9			
09/12/2011	10:30:31	-2		0.0	8.36		554.9			
09/12/2011	10:31:01	-2		0.0	8.36		554.9			
09/12/2011	10:31:31	-2		0.0	8.36		554.9			
09/12/2011	10:32:01	-2		0.0	8.36		554.9			
09/12/2011	10:32:31	-2		0.0	8.36		554.9			
09/12/2011	10:33:01	-1		0.0	8.36		554.9			
09/12/2011	10:33:31	-2		0.0	8.36		554.9			
09/12/2011	10:34:01	-2		0.0	8.36		554.9			
09/12/2011	10:34:31	-1		0.0	8.36		554.9			

Well			Field		Job Start	Customer		Job Number
DW 8601A-33			N PARACHUTE		Sep/12/2011	ENCANA		BUNM-00117
Date	Time 24-hr clock	Treating Pressure PSI	Flow Rate B/M	Density LB/G	Volume BBL	Message		
09/12/2011	10:35:31	-2	0.0	8.36	554.9			
09/12/2011	10:36:01	-2	0.0	8.36	554.9			
09/12/2011	10:36:31	-2	0.0	8.36	554.9			
09/12/2011	10:37:01	-2	0.0	8.36	554.9			
09/12/2011	10:37:31	-2	0.0	8.36	554.9			
09/12/2011	10:38:01	-2	0.0	8.36	554.9			
09/12/2011	10:38:31	-2	0.0	8.36	554.9			
09/12/2011	10:39:01	-2	0.0	8.36	554.9			
09/12/2011	10:39:31	-2	0.0	8.36	554.9			
09/12/2011	10:40:01	-1	0.0	8.36	554.9			
09/12/2011	10:40:13	-2	0.0	8.36	554.9	Wait to Pump Parasite		
09/12/2011	10:40:28	-2	0.0	8.36	554.9	End Job		

Post Job Summary

Average Pump Rates, bbl/min					Volume of Fluid Injected, bbl							
Slurry 5.6	N2	Mud	Maximum Rate 8.1	Total Slurry 554.9	Mud 0.0	Spacer 54.2	N2					
Treating Pressure Summary, psi					Breakdown Fluid							
Maximum 5835	Final -2	Average 361	Bump Plug to	Breakdown	Type	Volume bbl	Density lb/gal					
Avg. N2 Percent %	Designed Slurry Volume 0.0 bbl	Displacement 172.0 bbl	Mix Water Temp 63 degF	Cement Circulated to Surface? <input checked="" type="checkbox"/>		Volume bbl						
				Washed Thru Perfs <input type="checkbox"/>		To ft						
Customer or Authorized Representative IRA COX			Schlumberger Supervisor JASON CRICK			Circulation Lost <input type="checkbox"/>	Job Completed <input checked="" type="checkbox"/>					
						-	-					