

WELL LOCATION CERTIFICATE

THIS MAP IS A GIS EXHIBIT AND DOES NOT REPRESENT A BOUNDARY SURVEY.

1 OF 1

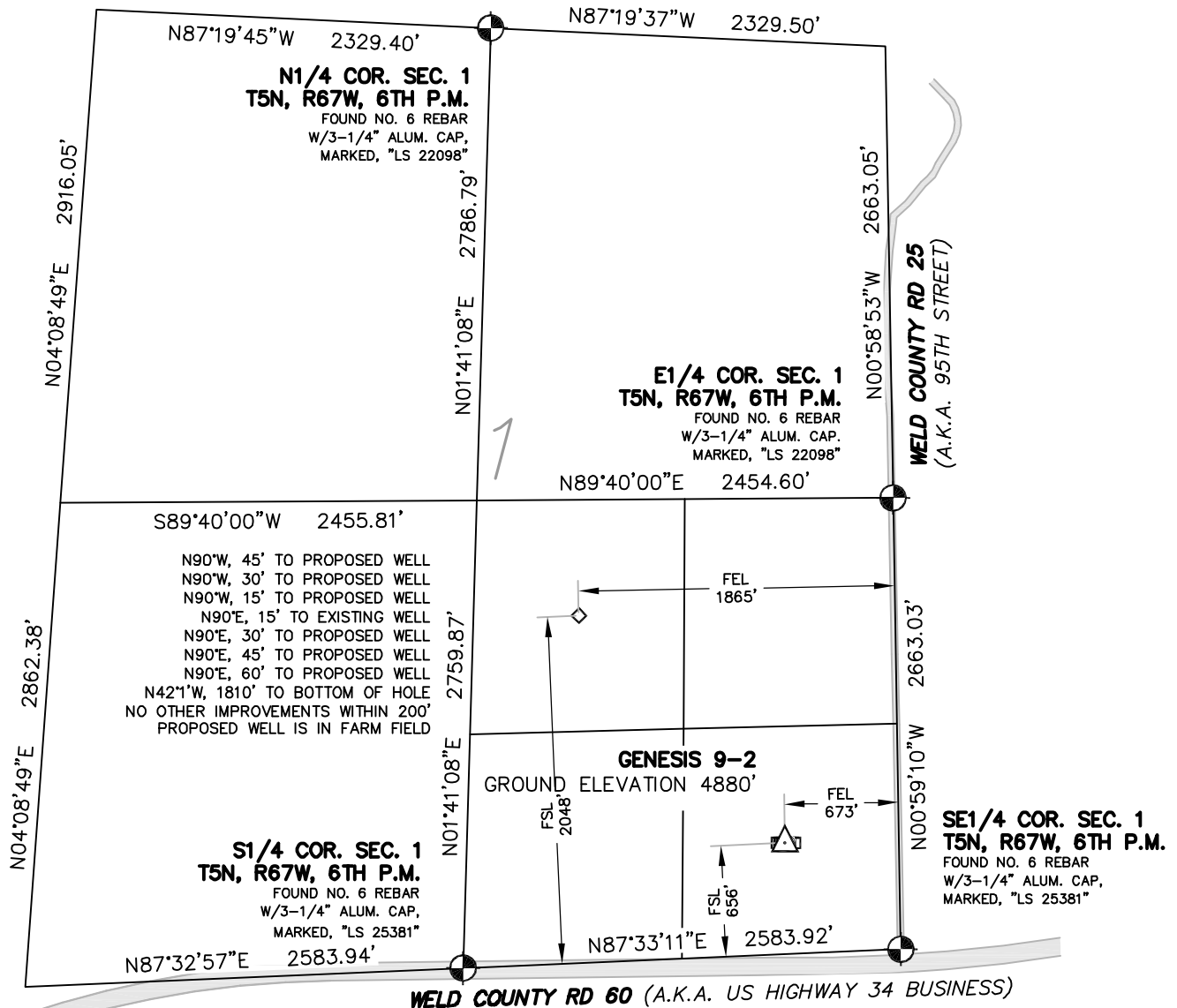
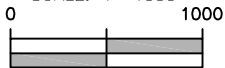


EXHIBIT MAP

SCALE: 1"=1000'



WELL LOCATION CERTIFICATE

IN ACCORDANCE WITH A REQUEST FROM SUSANA LARA-MESA OF KP KAUFFMAN INC., CIVILARTS, INC. HAS DETERMINED THE LOCATION OF GENESIS 9-2 WELL SITE TO BE 656' FSL AND 673' FEL AS MEASURED AT NINETY (90) DEGREES FROM THE SECTION LINES OF SECTION 1, T5N, R67W, OF THE 6TH P.M., WELD COUNTY, CO. WELL IS LOCATED IN SE1/4 OF THE SE1/4 OF SECTION 1, AND THE BOTTOM OF HOLE IS LOCATED IN THE NW1/4 OF THE SE1/4 OF SECTION 1.

LEGEND

- ⊕ = FOUND SURVEY MONUMENT
- = ROAD
- (C) = CALCULATED DIMENSION
- △ = PROPOSED WELL LOCATION
- ◇ = BOTTOM OF HOLE LOCATION
- = OTHER PROPOSED WELL LOCATION
- = EXISTING WELL LOCATION

NOTES

1. BEARINGS SHOWN ON THIS MAP ARE BASED UPON GPS OBSERVATIONS MADE ON 11/08/2012 BY KIPPER GOLDSBERRY BETWEEN THE EAST 1/4 CORNER AND THE SOUTHEAST CORNER OF SECTION 1, T5N, R67W, OF THE 6TH P.M., HAVING A BEARING OF N00°59'10"W, AS MONUMENTED AND SHOWN HEREON.
2. ELEVATIONS ARE BASED UPON NAVD 88 DATUM.

PROPOSED SURFACE HOLE DATA

(NAD 88)
LATITUDE: 40.42332 N
LONGITUDE: 104.83485 W
ELEVATION: 4880.40'
PDOP: <1.2

PROPOSED SURFACE HOLE DATA

(NAD 88)
LATITUDE: 40.42702 N
LONGITUDE: 104.83918 W

NOTICE

ACCORDING TO COLORADO LAW YOU MUST COMMENCE ANY LEGAL ACTION BASED UPON ANY DEFECT IN THIS SURVEY WITHIN THREE YEARS AFTER YOU FIRST DISCOVERED SUCH DEFECT. IN NO EVENT MAY ANY ACTION BASED UPON ANY DEFECT IN THIS SURVEY BE COMMENCED MORE THAN TEN YEARS FROM THE DATE OF THE CERTIFICATION SHOWN HEREON.

Z:\597-14\C3D-597-14\Dwg\597-14-06\SEC 1\GENESIS-9-2.DWG

I HEREBY CERTIFY THAT THIS WELL LOCATION CERTIFICATE WAS PREPARED UNDER MY RESPONSIBLE CHARGE ON 11/08/2012 FOR AND ON BEHALF OF KP KAUFFMAN, INC. THAT IT IS NOT A LAND SURVEY PLAT OR AN IMPROVEMENT SURVEY PLAT, AND THAT IT IS NOT TO BE RELIED UPON FOR ESTABLISHMENT OF FENCE, BUILDING OR OTHER FUTURE IMPROVEMENT LINES.

PETER D. STEGER
COLORADO REGISTERED PROFESSIONAL
LAND SURVEYOR NO. 25379

DATE: NOVEMBER 26, 2012



ENGINEERING: 1860 Lefthand Circle, Suite A
PLANNING: Longmont, CO 80501
SURVEYING: P 303.682.1131
F 303.682.1149