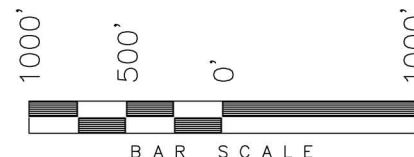


See Sheet 2aa

T7S, R93W, 6th P.M.

ENCANA OIL & GAS (USA) INC

WELL LOCATION, HMU FEE 23-16B1 (D25W), LOCATED AS SHOWN IN THE NW 1/4 NW 1/4 OF SECTION 25, T7S, R93W, 6th P.M. GARFIELD COUNTY, COLORADO.



NOTES:

1. Well footages are measured at right angles to the Section Lines.
2. Bearings are based on Global Positioning Satellite observations.
3. G.P.S. Operator: C.D. Slauch, (PDOP) = 3.2

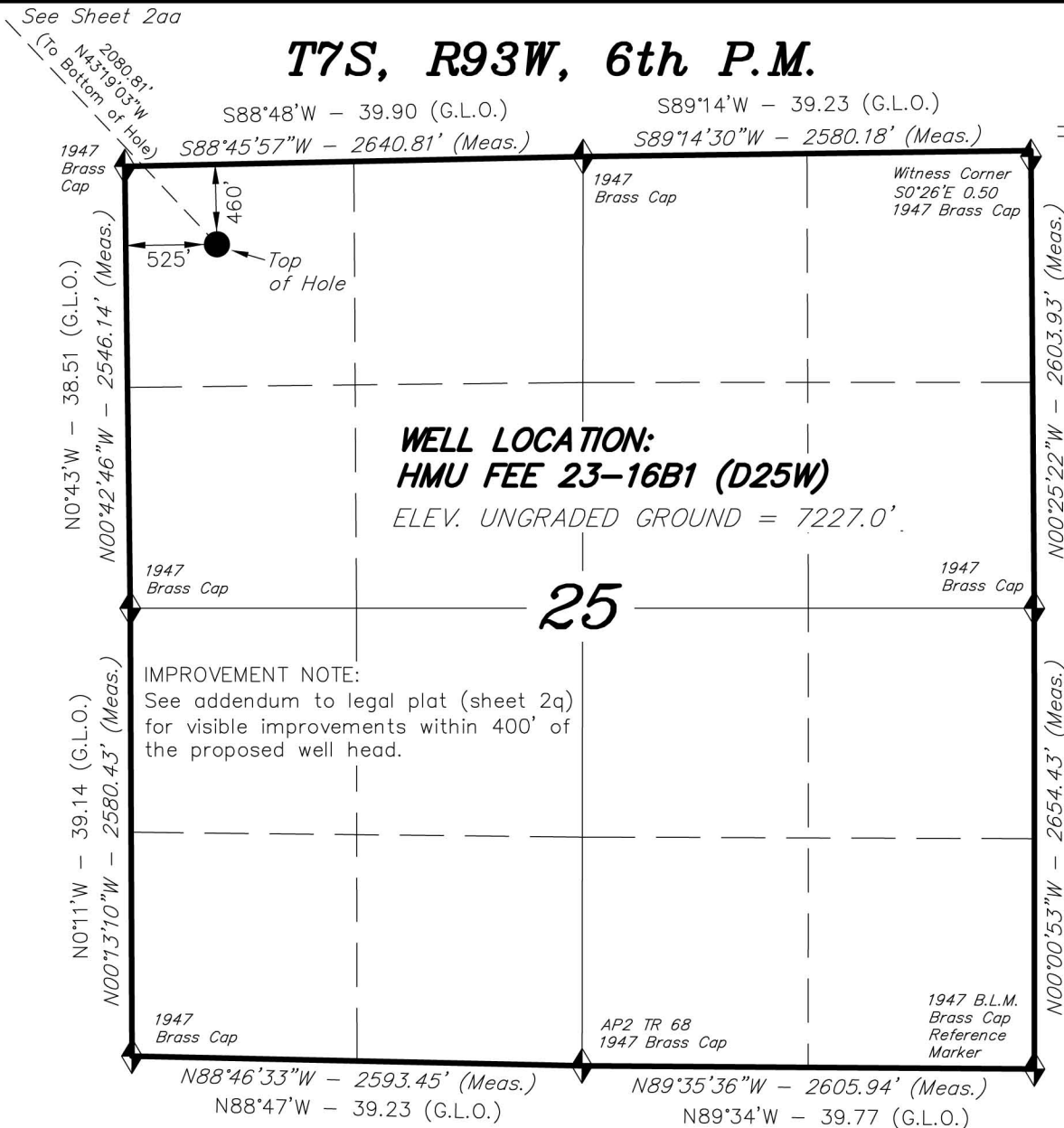
THIS IS TO CERTIFY THAT THE ABOVE PLAT WAS PREPARED FROM FIELD NOTES OF A SURVEY MADE BY ME OR UNDER MY SUPERVISION. LOCATION HAS BEEN STAKED ON THE GROUND AS SHOWN ON THE PLAT, AND THAT THE SAME ARE TRUE AND CORRECT TO THE BEST OF MY KNOWLEDGE AND BELIEF.

[Signature]
30125
REGISTERED LAND SURVEYOR
REGISTRATION No. 030125
STATE OF COLORADO
NATIONAL LAND SURVEYOR

TRI STATE LAND SURVEYING & CONSULTING

180 NORTH VERNAL AVE. - VERNAL, UTAH 84078
(435) 781-2501

DATE SURVEYED: 07-08-10	SURVEYED BY: C.D.S.	SHEET 2a OF 11
DATE DRAWN: 07-30-10	DRAWN BY: F.T.M.	
REVISED:	SCALE: 1" = 1000'	



NAD 83 (SURFACE LOCATION)

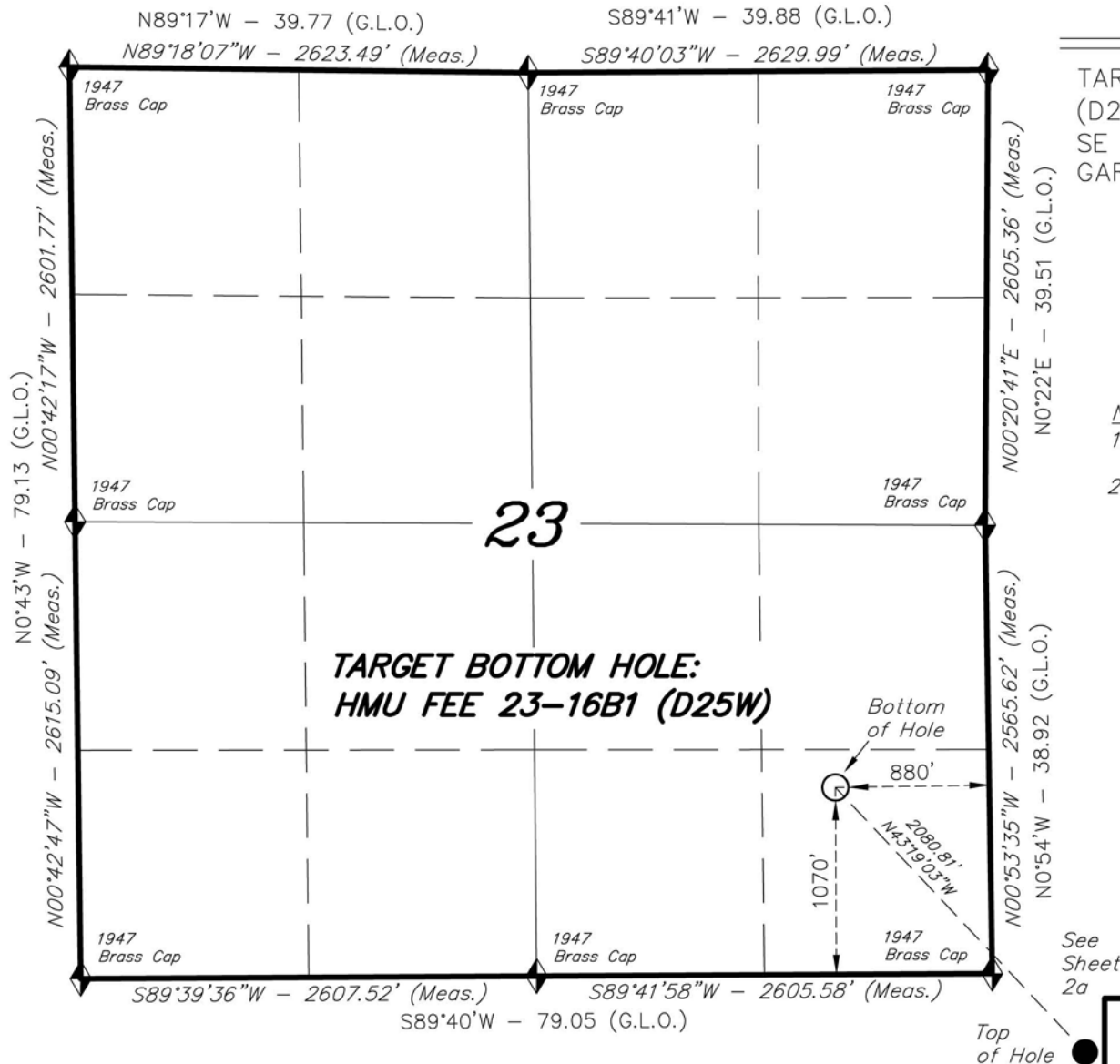
LATITUDE = 39°25'22.83"
(39.423009)
LONGITUDE = 107°43'50.82"
(107.730782)

◆ = SECTION CORNERS LOCATED

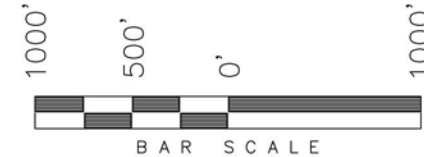
Basis of elevation is the Rifle 2 Triangulation Station. 39°31'53.80" N Lat. & 107°47'07.78" W Long. (NAD 83). Elevation = 5323.1' (NAVD88).

T7S, R93W, 6th P.M.

ENCANA OIL & GAS (USA) INC



TARGET BOTTOM HOLE, HMU FEE 23-16B1 (D25W), LOCATED AS SHOWN IN THE SE 1/4 SE 1/4 OF SECTION 23, T7S, R93W, 6th P.M., GARFIELD COUNTY, COLORADO.



NOTES:

1. Well footages are measured at right angles to the Section Lines.
2. Bearings are based on Global Positioning Satellite observations.



THIS IS TO CERTIFY THAT THE ABOVE PLAT WAS PREPARED FROM FIELD NOTES OF ACTUAL SURVEYS MADE BY ME OR UNDER MY SUPERVISION. THE LOCATION HAS BEEN STAKED ON THE GROUND AS SHOWN ON THE PLAT, AND THAT THE SAME ARE TRUE AND CORRECT TO THE BEST OF MY KNOWLEDGE AND BELIEF.

Steve W. [Signature]
30125
REGISTERED LAND SURVEYOR
REGISTRATION No. 30125
STATE OF COLORADO
NATIONAL LAND SURVEYOR

◆ = SECTION CORNERS LOCATED

Basis of elevation is the Rifle 2 Triangulation Station. 39°31'53.80" N Lat. & 107°47'07.78" W Long. (NAD 83). Elevation = 5323.1' (NAVD88).

TRI STATE LAND SURVEYING & CONSULTING

180 NORTH VERNAL AVE. - VERNAL, UTAH 84078
(435) 781-2501

DATE SURVEYED: 07-08-10	SURVEYED BY: C.D.S.	SHEET 2aa OF 11
DATE DRAWN: 07-28-10	DRAWN BY: F.T.M.	
REVISED:	SCALE: 1" = 1000'	