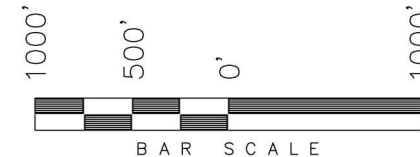


**T7S, R93W, 6th P.M.**

**ENCANA OIL & GAS (USA) INC**

WELL LOCATION, HMU FEDERAL 25-3C (D25W), LOCATED AS SHOWN IN THE NW 1/4 NW 1/4 OF SECTION 25, T7S, R93W, 6th P.M. GARFIELD COUNTY, COLORADO.



**NOTES:**

1. Well footages are measured at right angles to the Section Lines.
2. Bearings are based on Global Positioning Satellite observations.
3. G.P.S. Operator: C.D. Slauch, (PDOP) = 3.5

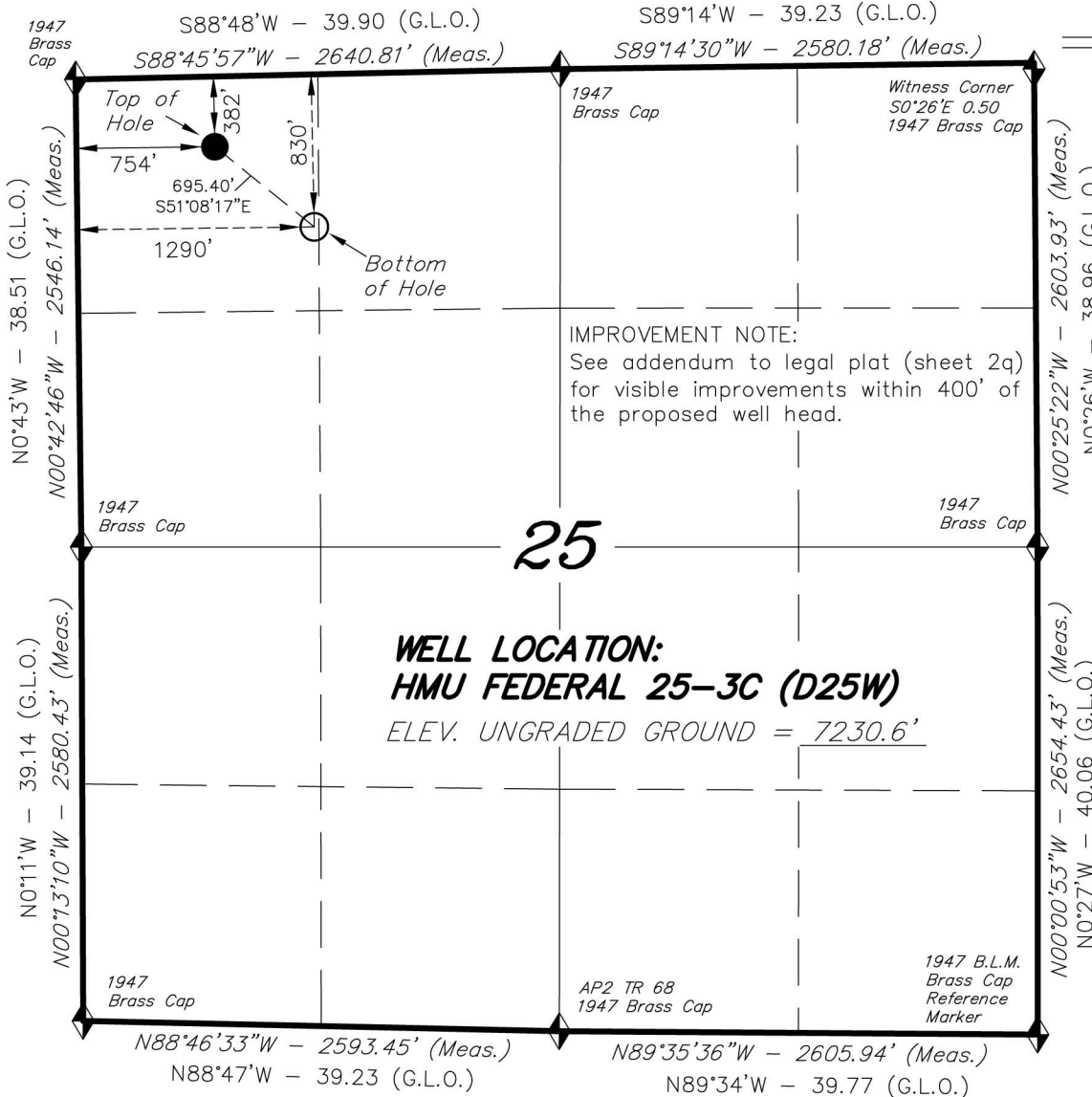
THIS IS TO CERTIFY THAT THE ABOVE PLAT WAS PREPARED FROM FIELD NOTES OF A SURVEY MADE BY ME OR UNDER MY SUPERVISION. LOCATION HAS BEEN STAKED ON THE GROUND AS SHOWN ON THE PLAT, AND THAT THE SAME ARE TRUE AND CORRECT TO THE BEST OF MY KNOWLEDGE AND BELIEF.

*[Signature]*  
# 30125  
REGISTERED LAND SURVEYOR  
REGISTRATION No. 30125  
STATE OF COLORADO  
NATIONAL LAND SURVEYOR

**TRI STATE LAND SURVEYING & CONSULTING**

180 NORTH VERNAL AVE. - VERNAL, UTAH 84078  
(435) 781-2501

DATE SURVEYED: 07-08-10	SURVEYED BY: C.D.S.	<b>SHEET</b> <b>2p</b> <b>OF 11</b>
DATE DRAWN: 07-30-10	DRAWN BY: F.T.M.	
REVISED:	SCALE: 1" = 1000'	



**IMPROVEMENT NOTE:**

See addendum to legal plat (sheet 2q) for visible improvements within 400' of the proposed well head.

**WELL LOCATION:**  
**HMU FEDERAL 25-3C (D25W)**

ELEV. UNGRADED GROUND = 7230.6'

**NAD 83 (SURFACE LOCATION)**

LATITUDE = 39°25'23.65"  
(39.423236)  
LONGITUDE = 107°43'47.91"  
(107.729976)

◆ = SECTION CORNERS LOCATED

Basis of elevation is the Rifle 2 Triangulation Station. 39°31'53.80" N Lat. & 107°47'07.78" W Long. (NAD 83). Elevation = 5323.1' (NAVD88).