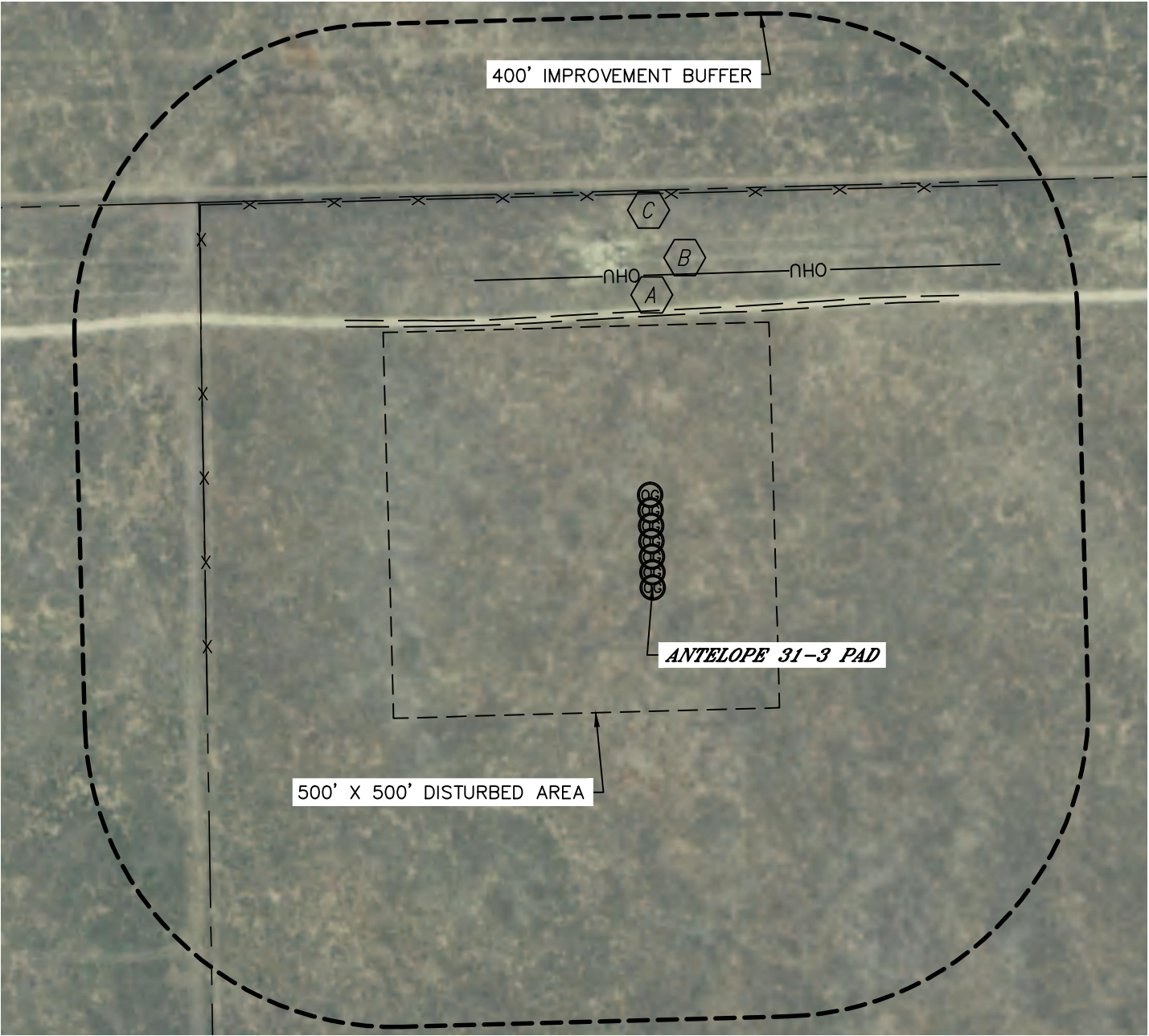







# LOCATION DRAWING

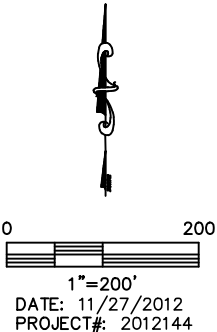
ANTELOPE 31-3 PAD

SECTION: 3  
TOWNSHIP: 5N  
RANGE: 62W



IMPROVEMENTS:  
(MEASURED FROM PROPOSED ANTELOPE 31-34-3HNB WELL LOCATION)

-  FIELD ROAD 351' N
-  OVERHEAD UTILITY 405' N
-  FENCE 510' N, 579' W



NEAREST: BUILDING 5280'+, PUBLIC ROAD 5280'+,  
ABOVE GROUND UTILITY 405' N, RAILROAD 5280'+, PROPERTY LINE 515' N

DATE: 11/27/2012  
PROJECT#: 2012144