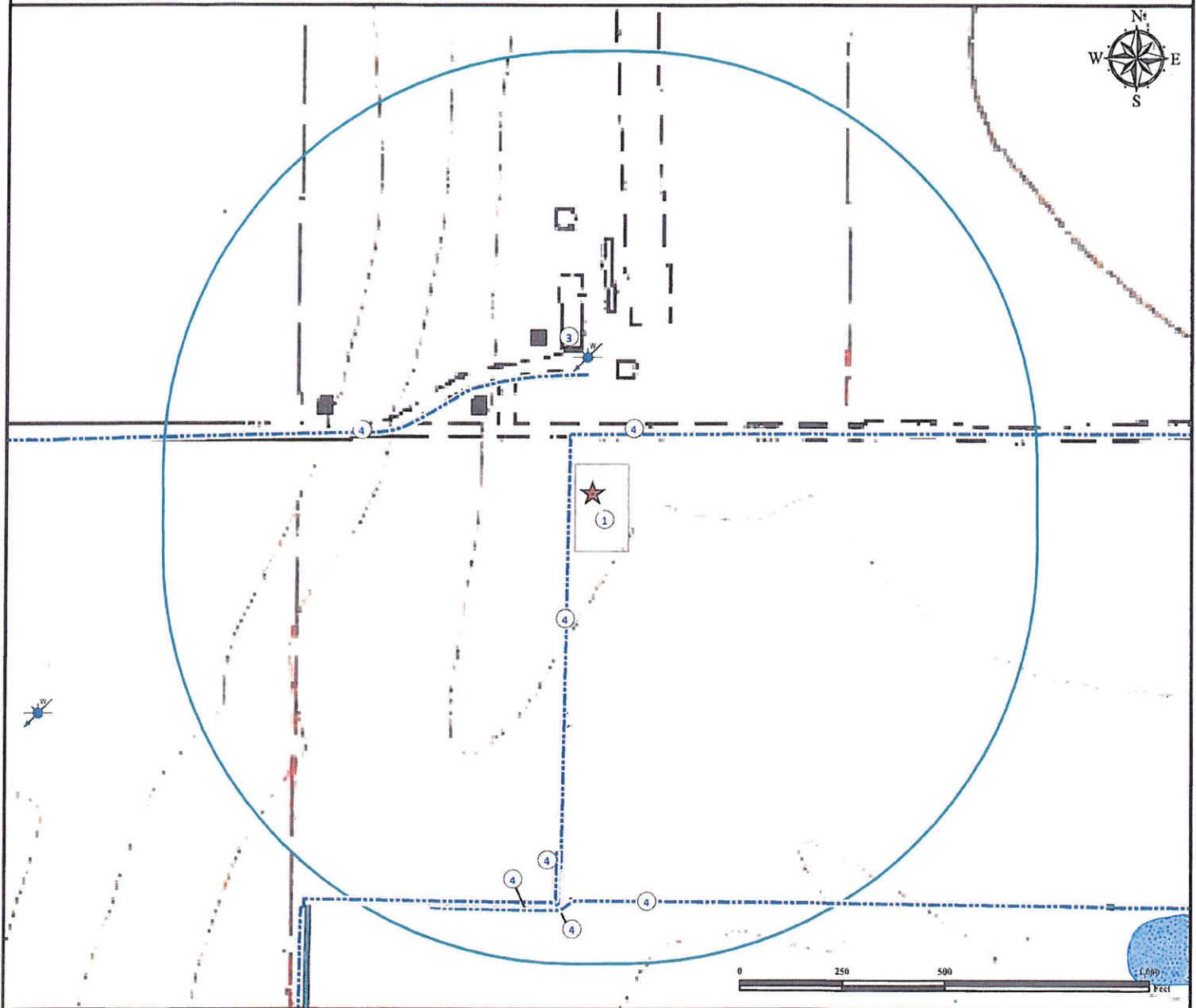


Hydrology Map

KAISER 6-10 FACILITY

NE¼ NW¼ SECTION 10, TOWNSHIP 6 NORTH, RANGE 65 WEST OF THE 6TH PRINCIPAL MERIDIAN



1. Proposed KAISER 6-10 FACILITY.

4. Concrete Ditches are $\pm 57'$ W, $\pm 140'$ N, $\pm 286'$ N, $\pm 875'$ SW, $\pm 991'$ S, $\pm 1008'$ SW, $\pm 1018'$ SW, and $\pm 992'$ SW.

3. Water well (#81047, Well Constructed) is $\pm 329'$ N.

Legend

★ Reference Point



Water Well



Proposed Facility



1000' Radius



Pond



Ditch



Concrete Ditch

Reference Location

** All Measurements are Made from
★ Reference Point **

Lat: 40.508161° Long: -104.651641° (NAD83)
Elevation: 4799 Feet



Use our resources to find yours!

www.petro-fs.com

(303) 928-7128

Field Date: 07/31/2012
Drafting Date: 08/22/2012
Drafter: DLR
Revision:

Data Sources:

- TOPO courtesy USGS
- Water Wells courtesy CDOWR

Prepared for:

BAYSWATER
EXPLORATION AND PRODUCTION, LLC