

Location:	COLORADO	Slot:	SLOT#56 GOBBLER 34N-23HZ (526'FNL & 279'FEL, SEC.22)
Field:	WELD COUNTY (KERR MCGEE)	Well:	GOBBLER 34N-23HZ
Facility:	SEC.22-T2N-R66W	Wellbore:	GOBBLER 34N-23HZ PWB

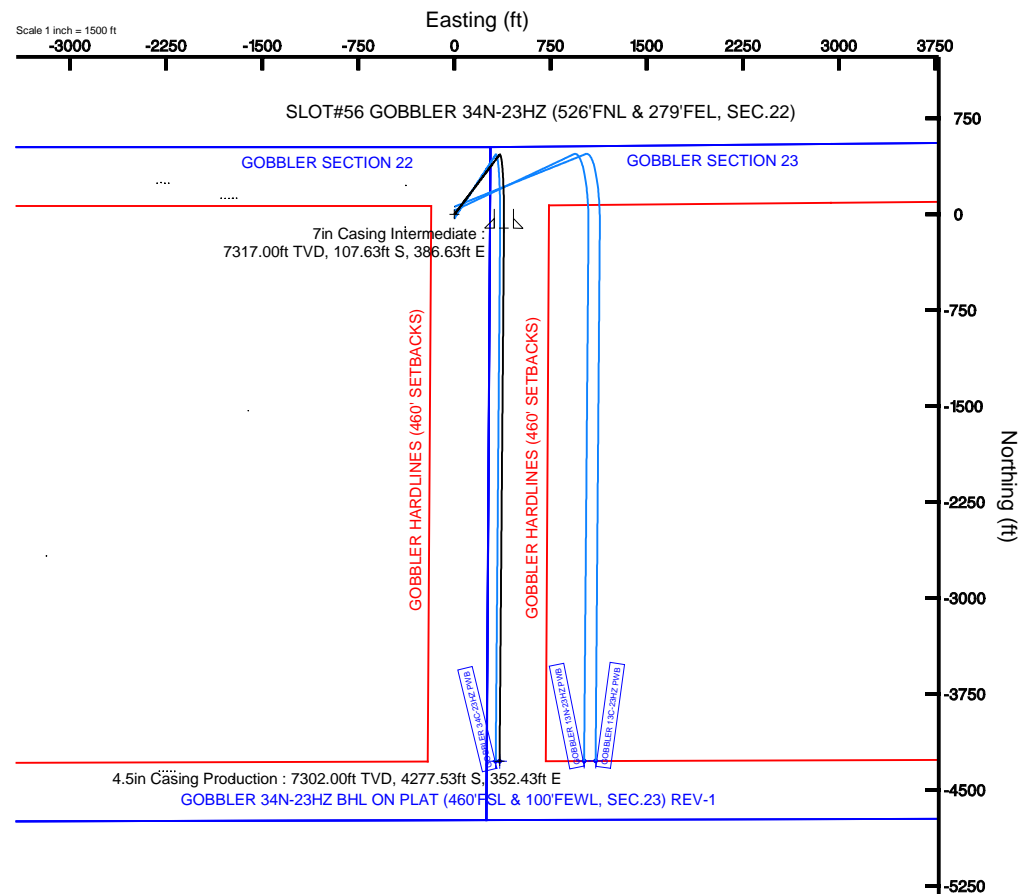
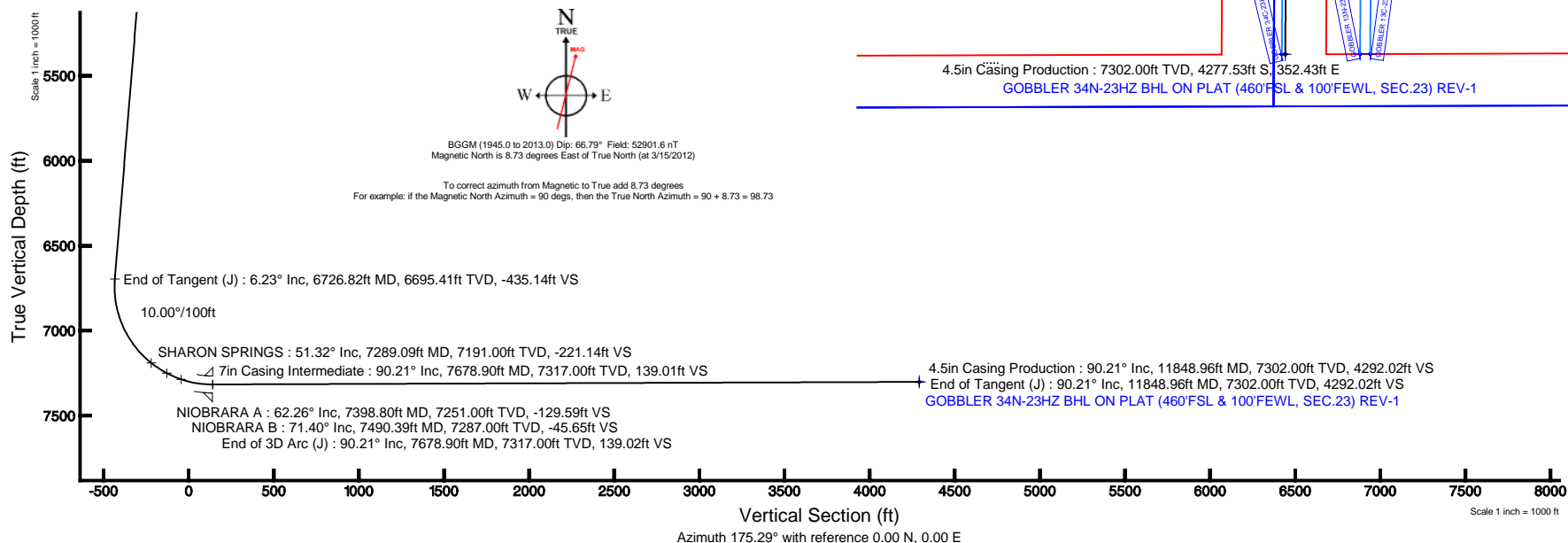
Location:	COLORADO	Slot:	SLOT#56 GOBBLER 34N-23HZ (526'FNL & 279'FEL, SEC.22)
Field:	WELD COUNTY (KERR MCGEE)	Well:	GOBBLER 34N-23HZ
Facility:	SEC.22-T2N-R66W	Wellbore:	GOBBLER 34N-23HZ PWB

True vertical depths are referenced to XTREME 6 (RKB)	Grid System: NAD83 / Lambert Colorado SP, Northern Zone (501), US feet
Measured depths are referenced to XTREME 6 (RKB)	North Reference: True north
XTREME 6 (RKB) to Mean Sea Level: 5102 feet	Scale: True distance
Mean Sea Level to Mud line (At Slot: SLOTH#6 GOBBLER 34N-23HZ (526FNL & 279FEL, SEC.22): 0 feet	Depths are in feet
Coordinates are in feet referenced to Slot	Created by: wilsjef02 on 3/19/2012

Facility Name			Grid East (US ft)	Grid North (US ft)	Latitude	Longitude
SEC.22-T2N-R66W			3203800.977	1290898.675	40°07'46.600"N	104°46'16.122"W
Slot	Local N (ft)	Local E (ft)	Grid East (US ft)	Grid North (US ft)	Latitude	Longitude
SLOT#56 GOBBLER 34N-23HZ (526FNL & 279FEL, SEC.22)	-53.92	4543.74	3208344.810	1290882.100	40°07'46.063"N	104°45'17.626"W
XTREME 6 (RKB) to Mud line (At Slot: SLOT#56 GOBBLER 34N-23HZ (526FNL & 279FEL, SEC.22))					5102ft	
Mean Sea Level to Mud line (At Slot: SLOT#56 GOBBLER 34N-23HZ (526FNL & 279FEL, SEC.22))					0ft	
XTREME 6 (RKB) to Mean Sea Level					5102ft	

Design Comment	MD (ft)	Inc (°)	Az (°)	TVD (ft)	Local N (ft)	Local E (ft)	DLS (°/100ft)	VS (ft)
Tie On	17.00	0.000	37.000	17.00	0.00	0.00	0.00	0.00
End of Tangent	1200.00	0.000	37.000	1200.00	0.00	0.00	0.00	0.00
End of Build (J)	1511.50	6.230	37.000	1510.89	13.51	10.18	2.00	-12.63
End of Tangent (J)	6726.82	6.230	37.000	6695.41	465.51	350.79	0.00	-435.14
End of 3D Arc (J)	7678.90	90.206	180.470	7317.00	-107.63	386.63	10.00	139.02
End of Tangent (J)	11848.96	90.206	180.470	7302.00	-4277.53	352.43	0.00	4292.02

Name	MD (ft)	TVD (ft)	Local N (ft)	Local E (ft)	Grid East (US ft)	Grid North (US ft)	Latitude	Longitude
GOBLER 1N-23H21N-23H21C-23H2 SECTION LINES	-1.00	-484.77	4472.15	3212854.29	1286435.25	40°07'01.740"N	104°44'20.062"W	
GOBLER SECTION 22	1320	125.77	-1820.66	3206223.24	1280992.56	40°07'47.305"N	104°45'41.065"W	
GOBLER 1N-23H21C-23H2 HARDLINES (460 SETBACKS)	7235.00	-484.77	4472.15	3212854.29	1286435.25	40°07'01.740"N	104°44'20.062"W	
GOBLER 34N-23H2 BH-L ON PLAT (460FSL & 100FEWL SEC.23) REV-1	11848.96	7302.00	-427.53	352.43	3208733.15	1286607.87	40°07'03.792"N	104°45'13.590"W
GOBLER HARDLINES (460 SETBACKS)	7302.00	125.77	-1820.66	3206223.24	1280992.56	40°07'47.305"N	104°45'41.065"W	





Planned Wellpath Report

GOBBLER 34N-23HZ (PERMIT) PWP

Page 1 of 5



REFERENCE WELLPATH IDENTIFICATION

Operator	KERR-MCGEE OIL & GAS ONSHORE LP	Slot	SLOT#56 GOBBLER 34N-23HZ (526'FNL & 279'FEL, SEC.22)
Area	COLORADO	Well	GOBBLER 34N-23HZ
Field	WELD COUNTY (KERR MCGEE)	Wellbore	GOBBLER 34N-23HZ PWB
Facility	SEC.22-T2N-R66W		

REPORT SETUP INFORMATION

Projection System	NAD83 / Lambert Colorado SP, Northern Zone (501), US feet	Software System	WellArchitect@ 3.0.2
North Reference	True	User	Wilsjef02
Scale	0.999959	Report Generated	3/19/2012 at 09:38:49
Convergence at slot	0.48° East	Database/Source file	WellArchitectDB/GOBBLER_34N-23HZ_PWB.xml

WELLPATH LOCATION

	Local coordinates		Grid coordinates		Geographic coordinates	
	North[ft]	East[ft]	Easting[US ft]	Northing[US ft]	Latitude	Longitude
Slot Location	-53.92	4543.74	3208344.81	1290882.10	40°07'46.063"N	104°45'17.626"W
Facility Reference Pt			3203800.98	1290898.68	40°07'46.600"N	104°46'16.122"W
Field Reference Pt			3197771.84	1268891.29	40°04'09.600"N	104°47'36.000"W

WELLPATH DATUM

Calculation method	Minimum curvature	XTREME 6 (RKB) to Facility Vertical Datum	5102.00ft
Horizontal Reference Pt	Slot	XTREME 6 (RKB) to Mean Sea Level	5102.00ft
Vertical Reference Pt	XTREME 6 (RKB)	XTREME 6 (RKB) to Mud Line at Slot (SLOT#56 GOBBLER 34N-23HZ (526'FNL & 279'FEL, SEC.22))	5102.00ft
MD Reference Pt	XTREME 6 (RKB)	Section Origin	N 0.00, E 0.00 ft
Field Vertical Reference	Mean Sea Level	Section Azimuth	175.29°



Planned Wellpath Report

GOBBLER 34N-23HZ (PERMIT) PWP

Page 2 of 5



REFERENCE WELLPATH IDENTIFICATION

Operator	KERR-MCGEE OIL & GAS ONSHORE LP	Slot	SLOT#56 GOBBLER 34N-23HZ (526'FNL & 279'FEL, SEC.22)
Area	COLORADO	Well	GOBBLER 34N-23HZ
Field	WELD COUNTY (KERR MCGEE)	Wellbore	GOBBLER 34N-23HZ PWB
Facility	SEC.22-T2N-R66W		

WELLPATH DATA (130 stations) † = interpolated/extrapolated station

MD [ft]	Inclination [°]	Azimuth [°]	TVD [ft]	Vert Sect [ft]	North [ft]	East [ft]	Latitude	Longitude	DLS [°/100ft]	Comments
0.00†	0.000	37.000	0.00	0.00	0.00	0.00	40°07'46.063"N	104°45'17.626"W	0.00	
17.00	0.000	37.000	17.00	0.00	0.00	0.00	40°07'46.063"N	104°45'17.626"W	0.00	Tie On
117.00†	0.000	37.000	117.00	0.00	0.00	0.00	40°07'46.063"N	104°45'17.626"W	0.00	
217.00†	0.000	37.000	217.00	0.00	0.00	0.00	40°07'46.063"N	104°45'17.626"W	0.00	
317.00†	0.000	37.000	317.00	0.00	0.00	0.00	40°07'46.063"N	104°45'17.626"W	0.00	
417.00†	0.000	37.000	417.00	0.00	0.00	0.00	40°07'46.063"N	104°45'17.626"W	0.00	
517.00†	0.000	37.000	517.00	0.00	0.00	0.00	40°07'46.063"N	104°45'17.626"W	0.00	
617.00†	0.000	37.000	617.00	0.00	0.00	0.00	40°07'46.063"N	104°45'17.626"W	0.00	
717.00†	0.000	37.000	717.00	0.00	0.00	0.00	40°07'46.063"N	104°45'17.626"W	0.00	
817.00†	0.000	37.000	817.00	0.00	0.00	0.00	40°07'46.063"N	104°45'17.626"W	0.00	
917.00†	0.000	37.000	917.00	0.00	0.00	0.00	40°07'46.063"N	104°45'17.626"W	0.00	
1017.00†	0.000	37.000	1017.00	0.00	0.00	0.00	40°07'46.063"N	104°45'17.626"W	0.00	
1117.00†	0.000	37.000	1117.00	0.00	0.00	0.00	40°07'46.063"N	104°45'17.626"W	0.00	
1200.00	0.000	37.000	1200.00	0.00	0.00	0.00	40°07'46.063"N	104°45'17.626"W	0.00	End of Tangent
1217.00†	0.340	37.000	1217.00	-0.04	0.04	0.03	40°07'46.063"N	104°45'17.626"W	2.00	
1317.00†	2.340	37.000	1316.97	-1.78	1.91	1.44	40°07'46.082"N	104°45'17.607"W	2.00	
1417.00†	4.340	37.000	1416.79	-6.13	6.56	4.94	40°07'46.128"N	104°45'17.562"W	2.00	
1511.50	6.230	37.000	1510.89	-12.63	13.51	10.18	40°07'46.197"N	104°45'17.495"W	2.00	End of Build (J)
1517.00†	6.230	37.000	1516.35	-13.08	13.99	10.54	40°07'46.201"N	104°45'17.490"W	0.00	
1617.00†	6.230	37.000	1615.76	-21.18	22.66	17.07	40°07'46.287"N	104°45'17.406"W	0.00	
1717.00†	6.230	37.000	1715.17	-29.28	31.32	23.60	40°07'46.373"N	104°45'17.322"W	0.00	
1817.00†	6.230	37.000	1814.58	-37.38	39.99	30.13	40°07'46.458"N	104°45'17.238"W	0.00	
1917.00†	6.230	37.000	1913.99	-45.48	48.66	36.66	40°07'46.544"N	104°45'17.154"W	0.00	
2017.00†	6.230	37.000	2013.40	-53.58	57.32	43.20	40°07'46.629"N	104°45'17.070"W	0.00	
2117.00†	6.230	37.000	2112.81	-61.68	65.99	49.73	40°07'46.715"N	104°45'16.986"W	0.00	
2217.00†	6.230	37.000	2212.22	-69.78	74.66	56.26	40°07'46.801"N	104°45'16.902"W	0.00	
2317.00†	6.230	37.000	2311.63	-77.89	83.32	62.79	40°07'46.886"N	104°45'16.818"W	0.00	
2417.00†	6.230	37.000	2411.04	-85.99	91.99	69.32	40°07'46.972"N	104°45'16.734"W	0.00	
2517.00†	6.230	37.000	2510.45	-94.09	100.66	75.85	40°07'47.058"N	104°45'16.650"W	0.00	
2617.00†	6.230	37.000	2609.86	-102.19	109.32	82.38	40°07'47.143"N	104°45'16.565"W	0.00	
2717.00†	6.230	37.000	2709.27	-110.29	117.99	88.91	40°07'47.229"N	104°45'16.481"W	0.00	
2817.00†	6.230	37.000	2808.68	-118.39	126.66	95.44	40°07'47.315"N	104°45'16.397"W	0.00	
2917.00†	6.230	37.000	2908.09	-126.49	135.32	101.97	40°07'47.400"N	104°45'16.313"W	0.00	
3017.00†	6.230	37.000	3007.50	-134.59	143.99	108.50	40°07'47.486"N	104°45'16.229"W	0.00	
3117.00†	6.230	37.000	3106.90	-142.70	152.66	115.04	40°07'47.572"N	104°45'16.145"W	0.00	
3217.00†	6.230	37.000	3206.31	-150.80	161.32	121.57	40°07'47.657"N	104°45'16.061"W	0.00	
3317.00†	6.230	37.000	3305.72	-158.90	169.99	128.10	40°07'47.743"N	104°45'15.977"W	0.00	
3417.00†	6.230	37.000	3405.13	-167.00	178.66	134.63	40°07'47.829"N	104°45'15.893"W	0.00	
3517.00†	6.230	37.000	3504.54	-175.10	187.32	141.16	40°07'47.914"N	104°45'15.809"W	0.00	
3617.00†	6.230	37.000	3603.95	-183.20	195.99	147.69	40°07'48.000"N	104°45'15.725"W	0.00	
3717.00†	6.230	37.000	3703.36	-191.30	204.66	154.22	40°07'48.085"N	104°45'15.641"W	0.00	
3817.00†	6.230	37.000	3802.77	-199.40	213.32	160.75	40°07'48.171"N	104°45'15.556"W	0.00	
3917.00†	6.230	37.000	3902.18	-207.51	221.99	167.28	40°07'48.257"N	104°45'15.472"W	0.00	
4017.00†	6.230	37.000	4001.59	-215.61	230.66	173.81	40°07'48.342"N	104°45'15.388"W	0.00	
4117.00†	6.230	37.000	4101.00	-223.71	239.32	180.34	40°07'48.428"N	104°45'15.304"W	0.00	
4217.00†	6.230	37.000	4200.41	-231.81	247.99	186.88	40°07'48.514"N	104°45'15.220"W	0.00	
4293.04†	6.230	37.000	4276.00	-237.97	254.58	191.84	40°07'48.579"N	104°45'15.156"W	0.00	PARKMAN
4317.00†	6.230	37.000	4299.82	-239.91	256.66	193.41	40°07'48.599"N	104°45'15.136"W	0.00	
4417.00†	6.230	37.000	4399.23	-248.01	265.33	199.94	40°07'48.685"N	104°45'15.052"W	0.00	
4517.00†	6.230	37.000	4498.64	-256.11	273.99	206.47	40°07'48.771"N	104°45'14.968"W	0.00	
4617.00†	6.230	37.000	4598.05	-264.21	282.66	213.00	40°07'48.856"N	104°45'14.884"W	0.00	
4671.27†	6.230	37.000	4652.00	-268.61	287.36	216.54	40°07'48.903"N	104°45'14.838"W	0.00	SUSSEX
4717.00†	6.230	37.000	4697.46	-272.32	291.33	219.53	40°07'48.942"N	104°45'14.800"W	0.00	
4817.00†	6.230	37.000	4796.87	-280.42	299.99	226.06	40°07'49.028"N	104°45'14.716"W	0.00	
4917.00†	6.230	37.000	4896.27	-288.52	308.66	232.59	40°07'49.113"N	104°45'14.632"W	0.00	
5017.00†	6.230	37.000	4995.68	-296.62	317.33	239.12	40°07'49.199"N	104°45'14.548"W	0.00	
5117.00†	6.230	37.000	5095.09	-304.72	325.99	245.65	40°07'49.284"N	104°45'14.463"W	0.00	
5217.00†	6.230	37.000	5194.50	-312.82	334.66	252.18	40°07'49.370"N	104°45'14.379"W	0.00	
5317.00†	6.230	37.000	5293.91	-320.92	343.33	258.71	40°07'49.456"N	104°45'14.295"W	0.00	
5417.00†	6.230	37.000	5393.32	-329.02	351.99	265.25	40°07'49.541"N	104°45'14.211"W	0.00	



Planned Wellpath Report

GOBBLER 34N-23HZ (PERMIT) PWP
Page 3 of 5



REFERENCE WELLPATH IDENTIFICATION

Operator	KERR-MCGEE OIL & GAS ONSHORE LP	Slot	SLOT#56 GOBBLER 34N-23HZ (526'FNL & 279'FEL, SEC.22)
Area	COLORADO	Well	GOBBLER 34N-23HZ
Field	WELD COUNTY (KERR MCGEE)	Wellbore	GOBBLER 34N-23HZ PWB
Facility	SEC.22-T2N-R66W		

WELLPATH DATA (130 stations) † = interpolated/extrapolated station

MD [ft]	Inclination [°]	Azimuth [°]	TVD [ft]	Vert Sect [ft]	North [ft]	East [ft]	Latitude	Longitude	DLS [°/100ft]	Comments
5517.00†	6.230	37.000	5492.73	-337.13	360.66	271.78	40°07'49.627"N	104°45'14.127"W	0.00	
5617.00†	6.230	37.000	5592.14	-345.23	369.33	278.31	40°07'49.713"N	104°45'14.043"W	0.00	
5717.00†	6.230	37.000	5691.55	-353.33	377.99	284.84	40°07'49.798"N	104°45'13.959"W	0.00	
5817.00†	6.230	37.000	5790.96	-361.43	386.66	291.37	40°07'49.884"N	104°45'13.875"W	0.00	
5917.00†	6.230	37.000	5890.37	-369.53	395.33	297.90	40°07'49.970"N	104°45'13.791"W	0.00	
6017.00†	6.230	37.000	5989.78	-377.63	403.99	304.43	40°07'50.055"N	104°45'13.707"W	0.00	
6117.00†	6.230	37.000	6089.19	-385.73	412.66	310.96	40°07'50.141"N	104°45'13.623"W	0.00	
6217.00†	6.230	37.000	6188.60	-393.83	421.33	317.49	40°07'50.227"N	104°45'13.539"W	0.00	
6317.00†	6.230	37.000	6288.01	-401.94	429.99	324.02	40°07'50.312"N	104°45'13.454"W	0.00	
6417.00†	6.230	37.000	6387.42	-410.04	438.66	330.55	40°07'50.398"N	104°45'13.370"W	0.00	
6517.00†	6.230	37.000	6486.83	-418.14	447.33	337.09	40°07'50.484"N	104°45'13.286"W	0.00	
6617.00†	6.230	37.000	6586.23	-426.24	455.99	343.62	40°07'50.569"N	104°45'13.202"W	0.00	
6717.00†	6.230	37.000	6685.64	-434.34	464.66	350.15	40°07'50.655"N	104°45'13.118"W	0.00	
6726.82	6.230	37.000	6695.41	-435.14	465.51	350.79	40°07'50.663"N	104°45'13.110"W	0.00	End of Tangent (J)
6817.00†	5.472	137.724	6785.30	-435.38	466.24	356.64	40°07'50.670"N	104°45'13.035"W	10.00	
6917.00†	14.492	165.891	6883.73	-419.22	450.54	362.91	40°07'50.515"N	104°45'12.954"W	10.00	
7017.00†	24.286	172.174	6977.96	-386.26	417.95	368.78	40°07'50.193"N	104°45'12.878"W	10.00	
7117.00†	34.195	174.967	7065.11	-337.50	369.46	374.05	40°07'49.714"N	104°45'12.810"W	10.00	
7217.00†	44.141	176.616	7142.54	-274.43	306.55	378.59	40°07'49.092"N	104°45'12.752"W	10.00	
7289.09†	51.322	177.474	7191.00	-221.14	253.31	381.31	40°07'48.566"N	104°45'12.717"W	10.00	SHARON SPRINGS
7317.00†	54.104	177.760	7207.91	-198.96	231.12	382.23	40°07'48.347"N	104°45'12.705"W	10.00	
7398.80†	62.260	178.498	7251.00	-129.59	161.71	384.48	40°07'47.661"N	104°45'12.676"W	10.00	NIOBRARA A
7417.00†	64.075	178.646	7259.21	-113.38	145.48	384.89	40°07'47.501"N	104°45'12.671"W	10.00	
7490.39†	71.396	179.203	7287.00	-45.65	77.62	386.15	40°07'46.830"N	104°45'12.655"W	10.00	NIOBRARA B
7517.00†	74.051	179.392	7294.90	-20.30	52.21	386.46	40°07'46.579"N	104°45'12.651"W	10.00	
7617.00†	84.029	180.067	7313.89	77.46	-45.84	386.92	40°07'45.610"N	104°45'12.645"W	10.00	
7678.90	90.206	180.470	7317.00	139.02	-107.63	386.63	40°07'44.999"N	104°45'12.649"W	10.00	End of 3D Arc (J)
7717.00†	90.206	180.470	7316.87	176.96	-145.73	386.32	40°07'44.623"N	104°45'12.653"W	0.00	
7817.00†	90.206	180.470	7316.51	276.55	-245.72	385.50	40°07'43.635"N	104°45'12.663"W	0.00	
7917.00†	90.206	180.470	7316.15	376.14	-345.72	384.67	40°07'42.647"N	104°45'12.674"W	0.00	
8017.00†	90.206	180.470	7315.79	475.73	-445.72	383.85	40°07'41.658"N	104°45'12.684"W	0.00	
8117.00†	90.206	180.470	7315.43	575.32	-545.71	383.03	40°07'40.670"N	104°45'12.695"W	0.00	
8217.00†	90.206	180.470	7315.07	674.91	-645.71	382.21	40°07'39.682"N	104°45'12.706"W	0.00	
8317.00†	90.206	180.470	7314.71	774.50	-745.70	381.39	40°07'38.694"N	104°45'12.716"W	0.00	
8417.00†	90.206	180.470	7314.35	874.10	-845.70	380.57	40°07'37.706"N	104°45'12.727"W	0.00	
8517.00†	90.206	180.470	7313.99	973.69	-945.70	379.75	40°07'36.717"N	104°45'12.737"W	0.00	
8617.00†	90.206	180.470	7313.63	1073.28	-1045.69	378.93	40°07'35.729"N	104°45'12.748"W	0.00	
8717.00†	90.206	180.470	7313.27	1172.87	-1145.69	378.11	40°07'34.741"N	104°45'12.758"W	0.00	
8817.00†	90.206	180.470	7312.91	1272.46	-1245.68	377.29	40°07'33.753"N	104°45'12.769"W	0.00	
8917.00†	90.206	180.470	7312.55	1372.05	-1345.68	376.47	40°07'32.765"N	104°45'12.780"W	0.00	
9017.00†	90.206	180.470	7312.19	1471.64	-1445.68	375.65	40°07'31.777"N	104°45'12.790"W	0.00	
9117.00†	90.206	180.470	7311.83	1571.23	-1545.67	374.83	40°07'30.788"N	104°45'12.801"W	0.00	
9217.00†	90.206	180.470	7311.47	1670.82	-1645.67	374.01	40°07'29.800"N	104°45'12.811"W	0.00	
9317.00†	90.206	180.470	7311.11	1770.41	-1745.66	373.19	40°07'28.812"N	104°45'12.822"W	0.00	
9417.00†	90.206	180.470	7310.75	1870.00	-1845.66	372.37	40°07'27.824"N	104°45'12.832"W	0.00	
9517.00†	90.206	180.470	7310.39	1969.60	-1945.66	371.55	40°07'26.836"N	104°45'12.843"W	0.00	
9617.00†	90.206	180.470	7310.03	2069.19	-2045.65	370.73	40°07'25.848"N	104°45'12.854"W	0.00	
9717.00†	90.206	180.470	7309.67	2168.78	-2145.65	369.91	40°07'24.859"N	104°45'12.864"W	0.00	
9817.00†	90.206	180.470	7309.31	2268.37	-2245.64	369.09	40°07'23.871"N	104°45'12.875"W	0.00	
9917.00†	90.206	180.470	7308.95	2367.96	-2345.64	368.27	40°07'22.883"N	104°45'12.885"W	0.00	
10017.00†	90.206	180.470	7308.59	2467.55	-2445.64	367.45	40°07'21.895"N	104°45'12.896"W	0.00	
10117.00†	90.206	180.470	7308.23	2567.14	-2545.63	366.63	40°07'20.907"N	104°45'12.906"W	0.00	
10217.00†	90.206	180.470	7307.87	2666.73	-2645.63	365.81	40°07'19.919"N	104°45'12.917"W	0.00	
10317.00†	90.206	180.470	7307.51	2766.32	-2745.62	364.99	40°07'18.930"N	104°45'12.928"W	0.00	
10417.00†	90.206	180.470	7307.15	2865.91	-2845.62	364.17	40°07'17.942"N	104°45'12.938"W	0.00	
10517.00†	90.206	180.470	7306.79	2965.51	-2945.62	363.35	40°07'16.954"N	104°45'12.949"W	0.00	
10617.00†	90.206	180.470	7306.43	3065.10	-3045.61	362.53	40°07'15.966"N	104°45'12.959"W	0.00	
10717.00†	90.206	180.470	7306.07	3164.69	-3145.61	361.71	40°07'14.978"N	104°45'12.970"W	0.00	
10817.00†	90.206	180.470	7305.71	3264.28	-3245.60	360.89	40°07'13.990"N	104°45'12.980"W	0.00	
10917.00†	90.206	180.470	7305.35	3363.87	-3345.60	360.07	40°07'13.001"N	104°45'12.991"W	0.00	



Planned Wellpath Report

GOBBLER 34N-23HZ (PERMIT) PWP

Page 4 of 5



REFERENCE WELLPATH IDENTIFICATION

Operator	KERR-MCGEE OIL & GAS ONSHORE LP	Slot	SLOT#56 GOBBLER 34N-23HZ (526'FNL & 279'FEL, SEC.22)
Area	COLORADO	Well	GOBBLER 34N-23HZ
Field	WELD COUNTY (KERR MCGEE)	Wellbore	GOBBLER 34N-23HZ PWB
Facility	SEC.22-T2N-R66W		

WELLPATH DATA (130 stations) † = interpolated/extrapolated station

MD [ft]	Inclination [°]	Azimuth [°]	TVD [ft]	Vert Sect [ft]	North [ft]	East [ft]	Latitude	Longitude	DLS [°/100ft]	Comments
11017.00†	90.206	180.470	7304.99	3463.46	-3445.60	359.25	40°07'12.013"N	104°45'13.002"W	0.00	
11117.00†	90.206	180.470	7304.63	3563.05	-3545.59	358.43	40°07'11.025"N	104°45'13.012"W	0.00	
11217.00†	90.206	180.470	7304.27	3662.64	-3645.59	357.61	40°07'10.037"N	104°45'13.023"W	0.00	
11317.00†	90.206	180.470	7303.91	3762.23	-3745.58	356.79	40°07'09.049"N	104°45'13.033"W	0.00	
11417.00†	90.206	180.470	7303.55	3861.82	-3845.58	355.97	40°07'08.061"N	104°45'13.044"W	0.00	
11517.00†	90.206	180.470	7303.19	3961.42	-3945.58	355.15	40°07'07.072"N	104°45'13.054"W	0.00	
11617.00†	90.206	180.470	7302.83	4061.01	-4045.57	354.33	40°07'06.084"N	104°45'13.065"W	0.00	
11717.00†	90.206	180.470	7302.47	4160.60	-4145.57	353.51	40°07'05.096"N	104°45'13.076"W	0.00	
11817.00†	90.206	180.470	7302.11	4260.19	-4245.56	352.69	40°07'04.108"N	104°45'13.086"W	0.00	
11848.96	90.206	180.470	7302.00 ¹	4292.02	-4277.53	352.43	40°07'03.792"N	104°45'13.090"W	0.00	End of Tangent (J)

HOLE & CASING SECTIONS - Ref Wellbore: GOBBLER 34N-23HZ PWB Ref Wellpath: GOBBLER 34N-23HZ (PERMIT) PWP

String/Diameter	Start MD [ft]	End MD [ft]	Interval [ft]	Start TVD [ft]	End TVD [ft]	Start N/S [ft]	Start E/W [ft]	End N/S [ft]	End E/W [ft]
13.5in Open Hole	17.00	1000.00	983.00	17.00	1000.00	0.00	0.00	0.00	0.00
9.625in Casing Surface	17.00	1000.00	983.00	17.00	1000.00	0.00	0.00	0.00	0.00
8.75in Open Hole	1000.00	7678.90	6678.90	1000.00	7317.00	0.00	0.00	-107.63	386.63
7in Casing Intermediate	17.00	7678.90	7661.90	17.00	7317.00	0.00	0.00	-107.63	386.63
6.125in Open Hole	7678.90	11848.96	4170.06	7317.00	7302.00	-107.63	386.63	-4277.53	352.43
4.5in Casing Production	17.00	11848.96	11831.96	17.00	7302.00	0.00	0.00	-4277.53	352.43

TARGETS

Name	MD [ft]	TVD [ft]	North [ft]	East [ft]	Grid East [US ft]	Grid North [US ft]	Latitude	Longitude	Shape
GOBBLER 1N-23HZ1N-23HZ/1C-23HZ SECTION LINES		-1.00	-4484.77	4472.15	3212854.29	1286435.25	40°07'01.740"N	104°44'20.062"W	polygon
GOBBLER SECTION 22		32.00	125.77	-1820.66	3206523.24	1290992.56	40°07'47.305"N	104°45'41.065"W	polygon
GOBBLER 1N-23HZ/1C-23HZ HARDLINES (460' SETBACKS)		7235.00	-4484.77	4472.15	3212854.29	1286435.25	40°07'01.740"N	104°44'20.062"W	polygon
1) GOBBLER 34N-23HZ BHL ON PLAT (460'FSL & 100'FEWL, SEC.23) REV-1	11848.96	7302.00	-4277.53	352.43	3208733.15	1286607.87	40°07'03.792"N	104°45'13.090"W	point
GOBBLER HARDLINES (460' SETBACKS)		7432.00	125.77	-1820.66	3206523.24	1290992.56	40°07'47.305"N	104°45'41.065"W	polygon

SURVEY PROGRAM - Ref Wellbore: GOBBLER 34N-23HZ PWB Ref Wellpath: GOBBLER 34N-23HZ (PERMIT) PWP

Start MD [ft]	End MD [ft]	Positional Uncertainty Model	Log Name/Comment	Wellbore
17.00	11848.96	NaviTrak (Standard)		GOBBLER 34N-23HZ PWB



Planned Wellpath Report
GOBBLER 34N-23HZ (PERMIT) PWP
Page 5 of 5



REFERENCE WELLPATH IDENTIFICATION			
Operator	KERR-MCGEE OIL & GAS ONSHORE LP	Slot	SLOT#56 GOBBLER 34N-23HZ (526'FNL & 279'FEL, SEC.22)
Area	COLORADO	Well	GOBBLER 34N-23HZ
Field	WELD COUNTY (KERR MCGEE)	Wellbore	GOBBLER 34N-23HZ PWB
Facility	SEC.22-T2N-R66W		

WELLPATH COMMENTS				
MD [ft]	Inclination [°]	Azimuth [°]	TVD [ft]	Comment
4293.04	6.230	37.000	4276.00	PARKMAN
4671.27	6.230	37.000	4652.00	SUSSEX
7289.09	51.322	177.474	7191.00	SHARON SPRINGS
7398.80	62.260	178.498	7251.00	NIOBRARA A
7490.39	71.396	179.203	7287.00	NIOBRARA B